



# Newberg-Dundee

## BYPASS PROJECT

June 2013

### Dirt moves as bypass construction begins

In June trucks will start rolling through the area as construction begins on the Newberg-Dundee Bypass. Rock, sand, and dirt will be brought in and out as the contractor prepares the area for road building activities that will take place over the next several years. Funding is available for the first phase of the bypass and construction will be complete in 2016.



#### Project Background

ODOT has been working for many years with local communities to plan the Newberg-Dundee Bypass, an expressway that will significantly reduce traffic congestion on OR 99W and improve livability and overall traffic flow in the surrounding communities. The full bypass will be an 11-mile, four-lane highway around the cities of Newberg and Dundee. While the entire bypass has been approved, funding is only available for the first part of the project (approximately 4 miles). Construction of this first phase is projected to cost \$262 million, with funds coming from the Oregon Legislature's Jobs and Transportation Act, the federal government and contributions by Yamhill County, the cities of Newberg, Dundee and McMinnville, and the Confederated Tribes of the Grand Ronde. (See inside for details on the first phase).

Benefits of the first phase, which will be complete in 2016:

- **Reduced congestion** – Traffic will decrease by about 20% in downtown Newberg and about 40% in downtown Dundee.
- **Reduced freight traffic** – Large truck traffic on OR 99W will decrease by 45% in Newberg and 68% in Dundee.
- **Increased safety** – Traffic conditions will improve, particularly along the OR 99W corridor where through-traffic shares the road with local traffic.
- **Reduced travel time** – Travel time during peak periods on OR 99W through Newberg and Dundee will be reduced by 50 to 60%.
- **Job creation** – Hundreds of living-wage construction jobs will be created during construction.

#### JOIN US!

Project staff invite you to attend an open house to learn more about the project:

- View maps of the alignment
- See graphics showing the treatment of bridges, retaining walls, and other prominent structures
- Learn about potential construction impacts and the project schedule

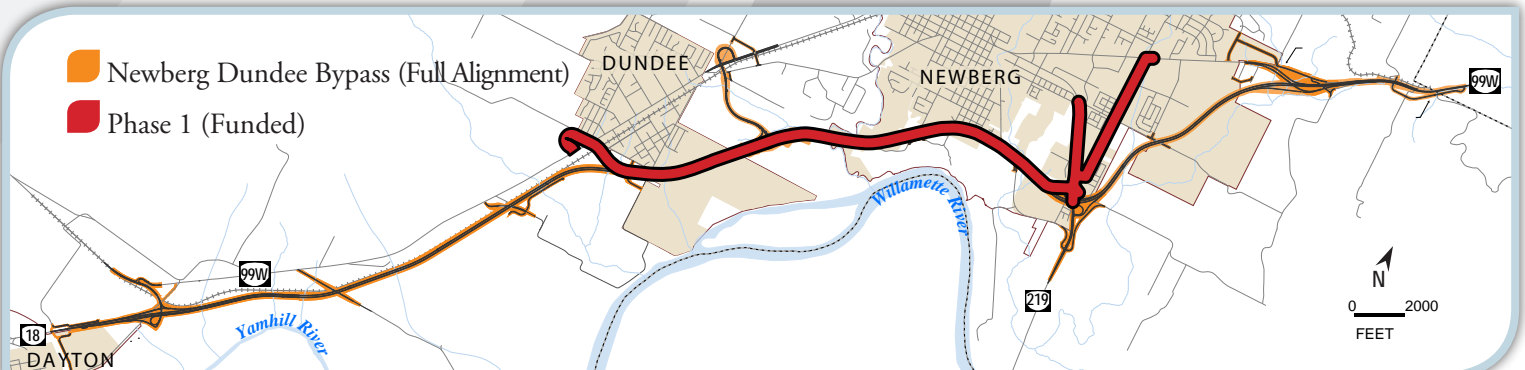
**Dundee: Tues., June 11, 6 – 8 p.m.**

Dundee Community Center  
(Women's Club)  
1026 Hwy 99W

**Newberg: Wed., June 12, 6 – 8 p.m.**

Chehalem Youth Center  
620 N. Morton Street


*A supervised child activity area will be available at both meetings.*





# Construction (Phase 1)

Over the next year, dirt and rock will be put in place, shaping the foundation of the roadway and bridges. In 2014, one of the first bridges of the bypass will be in place over Chehalem Creek in Dundee, and a large culvert for one of the stormwater ponds will be constructed at the east end of the project near Wynooski Road in Newberg. Construction of the actual roadway will begin in 2014, with the bypass opening in 2016.

 Connection points to the new bypass will be at two new signalized intersections at OR 219 in Newberg and on OR 99W just south of Dundee. The first phase of the roadway will be two lanes (one in each direction) with some additional turning lanes and widening of the roads at either end of the bypass. The full bypass is planned to be four lanes, two in each direction. The first phase of roadway (two lanes) will be aligned to the north side of the final bypass.

## What will neighbors notice during this early construction?

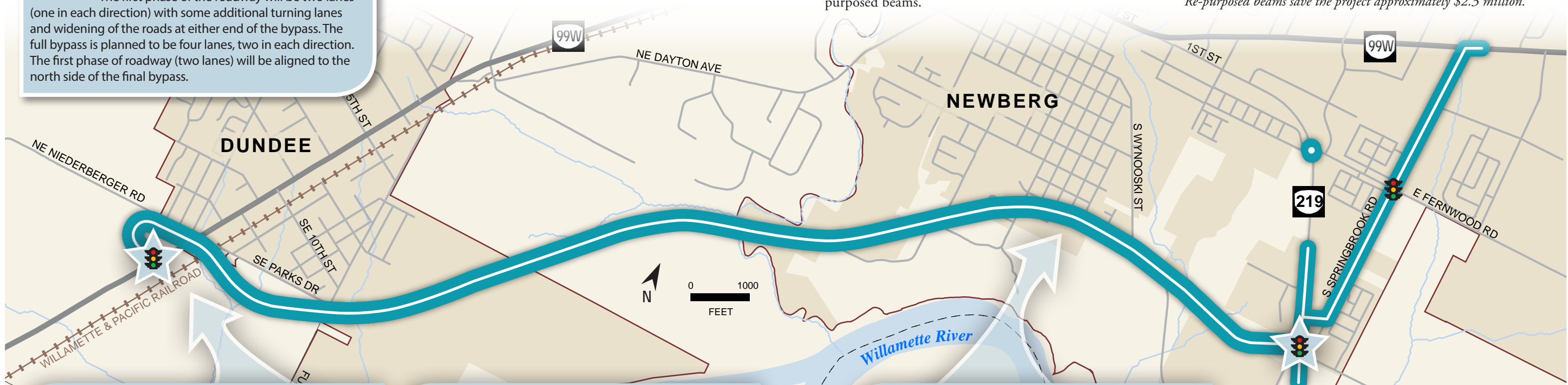
Neighbors nearest the new road alignment may hear construction activities, such as heavy equipment digging and scraping, as well as frequent unloading of trucks. Overall, movement of trucks will likely be the most noticeable construction activity over the next year. Expect an increase in construction truck traffic near the project area on OR 99W, OR 219, Edwards and Parks Roads in Dundee, and River Street and Wynooski in Newberg. ODOT inspectors will be on-site at all times to ensure the quality of work and safety at and around work sites.

## Re-purposed bridge beams mean cost savings

Over 100 bridge beams that were planned to be used on another road project in Oregon will now be used on the Newberg-Dundee Bypass. The bridge beams became available when four planned bridges on the Pioneer Mountain-Eddyville Project were replaced with fills and culverts. If the bridge beams were purchased for the Newberg-Dundee Bypass Project today, the cost would be approximately \$3.4 million. Instead, the beams will cost approximately \$1,100,000 for storage, transport, placement, and minor retrofit of beam flanges and steel bearing plates. Approximately \$2.3 million will be saved by using the re-purposed beams.



Re-purposed beams save the project approximately \$2.3 million.



### OVER 99W IN DUNDEE

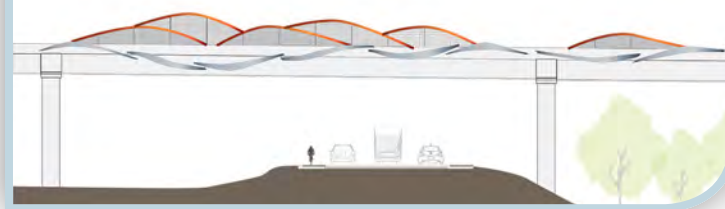
Neighbors and representatives from Dundee have shared thoughts on how the new bridge over the railroad tracks and OR 99W can serve as a gateway feature to the community. A concept for landscaping and artistic elements that evoke the red hills of Dundee and a metal river sculpture on the structure is being further refined.

### BRIDGES ABOVE THE BYPASS

Last year the Yamhill County Parkway Committee, made up of local government and business leaders, advised on a concept for bridge structures along the corridor. A rolling hill design will be incorporated where protective screening is required, and a concrete rail with a river relief will be placed on bridges over the bypass.

### VIEWS FROM 11TH STREET IN NEWBERG

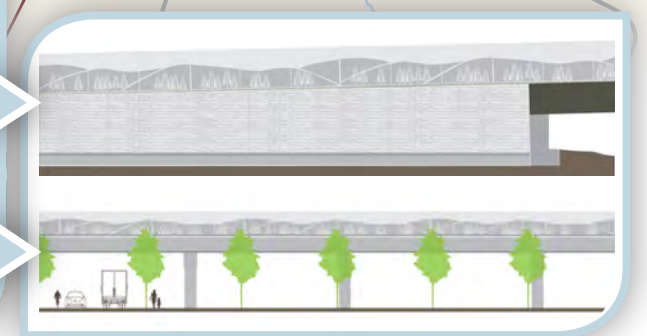
The design of the structures in south Newberg has been shaped through community input. Landscaping will use a mix of evergreen and deciduous trees and retaining walls will be made with a stone block texture. A noise wall will include a pattern of trees and hills.



Visual Concept 2013



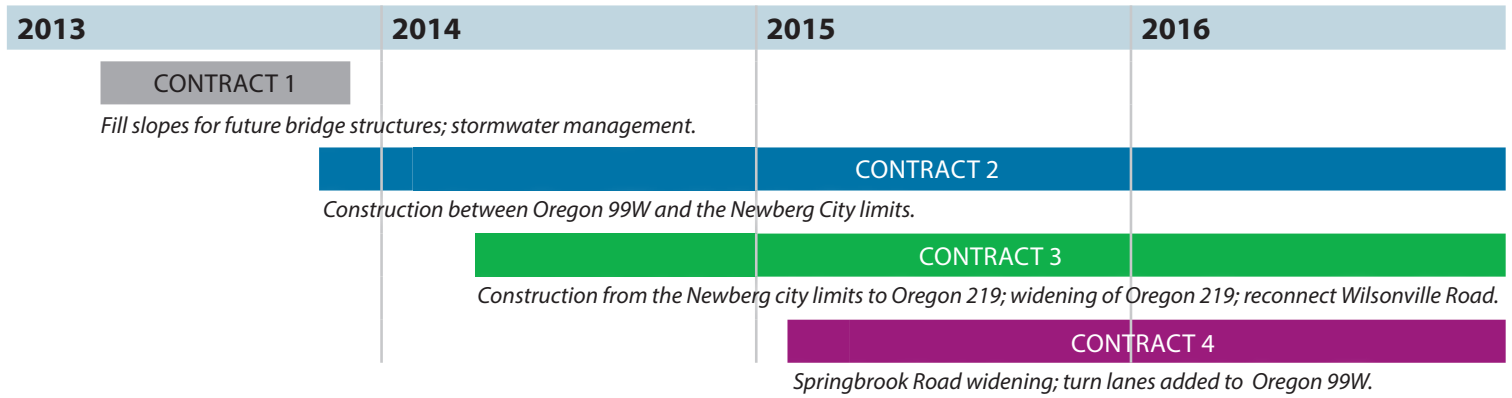
Visual Concept 2012



Visual Concepts 2013

# NEWBERG-DUNDEE BYPASS PHASE 1 CONSTRUCTION SCHEDULE

The project is being separated into several contracts. This allows work to begin while the project is still being designed.



## FOR MORE INFORMATION

Stay up to date as we further refine design and construction details and construct the first phase of the bypass. Visit the project website for the latest news and to sign up for the mailing list: [www.NewbergDundee.org](http://www.NewbergDundee.org).

Attend an **open house on June 11 or June 12** to learn more about the project, view maps and other graphics, and talk to project staff.

If you have questions about the project, or requests for special accommodations to attend this meeting, please contact:

**Kristen Kibler, Public Outreach  
JLA Public Involvement**  
newbergdundee@oregonjta.org  
(503) 235-5881, ext. 106

[www.NewbergDundee.org](http://www.NewbergDundee.org)

## ¿Quiere saber más sobre el proyecto Newberg-Dundee Bypass y su construcción?

Viene a una de estas reuniones en cualquier momento entre 6 y 8 p.m. Un intérprete de español sea disponible.

**Martes, 11 de junio**, Dundee Community Center, 1026 Hwy 99W

**Miércoles, 12 de junio**, Chehalem Youth Center, N. Morton Street, Newberg, OR

Si desea más información, por favor llame a Ellen a (503) 278-3462. Habrá actividades supervisadas para niños.



855 Airport Road SE, Building P  
Salem, Oregon 97301

RETURN SERVICE REQUESTED

## JOIN US!

Project staff invite you to open houses to learn more about the Newberg-Dundee Bypass

**Dundee: Tues., June 11, 6 – 8 p.m.**  
Dundee Community Center (Women's Club)  
1026 Hwy 99W

**Newberg: Wed., June 12, 6 – 8 p.m.**  
Chehalem Youth Center  
620 N. Morton Street

[www.NewbergDundee.org](http://www.NewbergDundee.org)