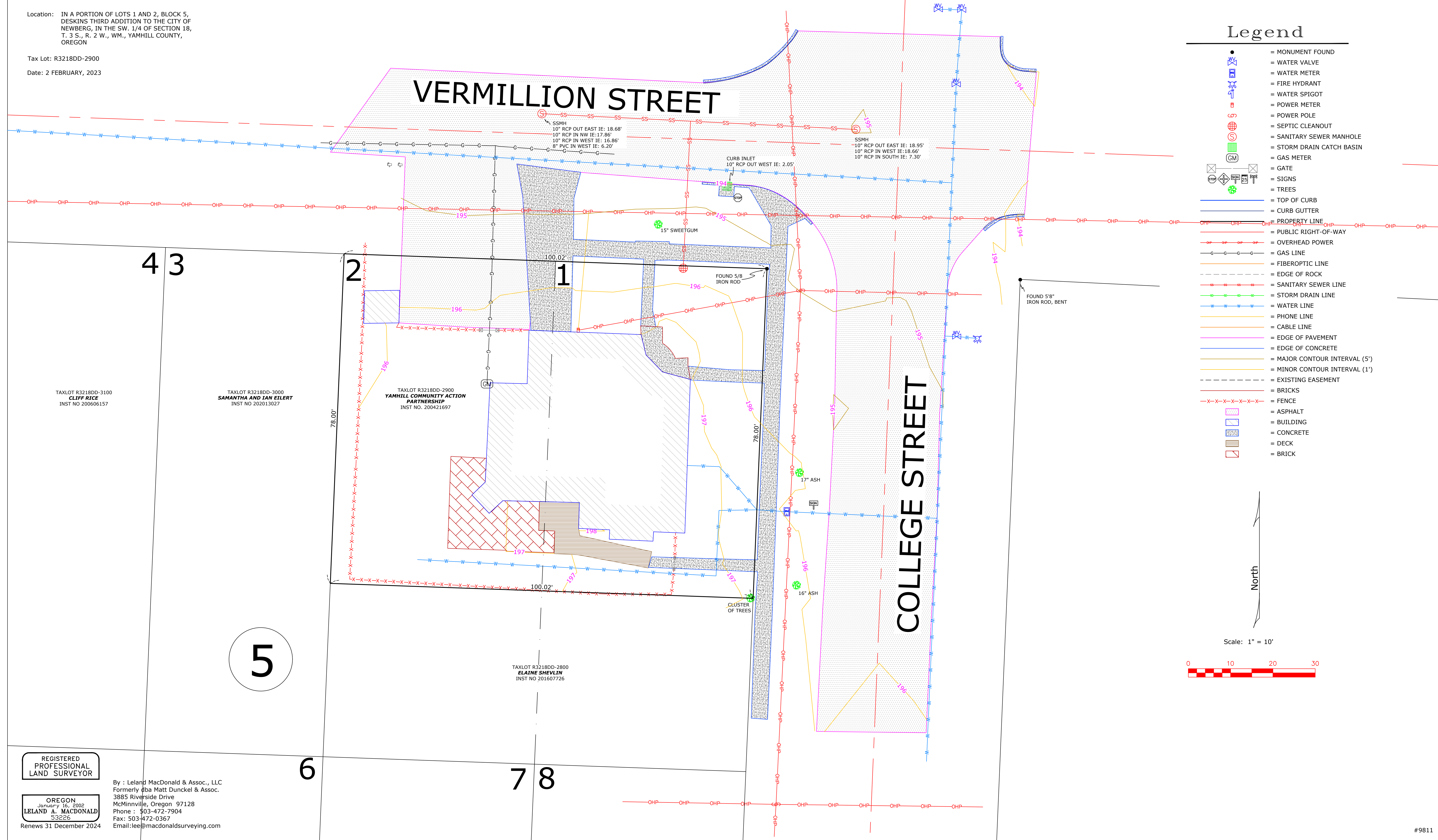


TOPOGRAPHIC SURVEY for: YAMHILL COMMUNITY ACTION PARTNERSHIP

Location: IN A PORTION OF LOTS 1 AND 2, BLOCK 5,
DESKINS THIRD ADDITION TO THE CITY OF
NEWBERG, IN THE SW 1/4 OF SECTION 18,
T. 3 S., R. 2 W., WM., YAMHILL COUNTY,
OREGON

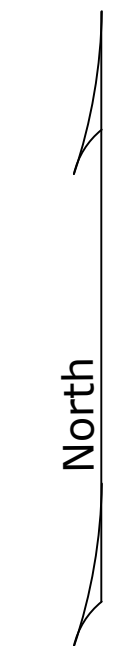
Tax Lot: R3218DD-2900

Date: 2 FEBRUARY, 2023



Legend

- = MONUMENT FOUND
- = WATER VALVE
- = WATER METER
- = FIRE HYDRANT
- = WATER SPIGOT
- = POWER METER
- = POWER POLE
- = SEPTIC CLEANOUT
- = SANITARY SEWER MANHOLE
- = STORM DRAIN CATCH BASIN
- = GAS METER
- = GATE
- = SIGNS
- = TREES
- = TOP OF CURB
- = CURB GUTTER
- = PROPERTY LINE
- = PUBLIC RIGHT-OF-WAY
- = OVERHEAD POWER
- = GAS LINE
- = FIBEROPTIC LINE
- = EDGE OF ROCK
- = SANITARY SEWER LINE
- = STORM DRAIN LINE
- = WATER LINE
- = PHONE LINE
- = CABLE LINE
- = EDGE OF PAVEMENT
- = EDGE OF CONCRETE
- = MAJOR CONTOUR INTERVAL (5')
- = MINOR CONTOUR INTERVAL (1')
- = EXISTING EASEMENT
- = BRICKS
- = FENCE
- = ASPHALT
- = BUILDING
- = CONCRETE
- = DECK
- = BRICK



Scale: 1" = 10'



4 3

2

1

5

6

7 8

TAXLOT R3218DD-3100
CLIFF RICE
INST NO 200606157

TAXLOT R3218DD-3000
SAMANTHA AND JIAN ELLERT
INST NO 202013027

TAXLOT R3218DD-2900
YAMHILL COMMUNITY ACTION
PARTNERSHIP
INST NO. 200421697

TAXLOT R3218DD-2800
ELAINE SHEVLIN
INST NO 201607726

REGISTERED
PROFESSIONAL
LAND SURVEYOR

OREGON
January 16, 2002
LELAND A. MACDONALD
53226

By : Leland MacDonald & Assoc., LLC
Formerly dba Matt Dunckel & Assoc.
3885 Riverside Drive
McMinnville, Oregon 97128
Phone : 503-472-7904
Fax: 503-472-0367
Email: lee@macdonaldsurveying.com

Renews 31 December 2024