

Legend

- = MONUMENT FOUND
- = WATER VALVE
- = WATER METER
- = FIRE HYDRANT
- = WATER SPIGOT
- = POWER METER
- = POWER POLE
- = SEPTIC CLEANOUT
- = SANITARY SEWER MANHOLE
- = STORM DRAIN CATCH BASIN
- = GAS METER
- = GATE
- = SIGNS
- = TREES
- = TOP OF CURB
- = CURB GUTTER
- = PROPERTY LINE
- = PUBLIC RIGHT-OF-WAY
- = OVERHEAD POWER
- = GAS LINE
- = FIBEROPTIC LINE
- = EDGE OF ROCK
- = SANITARY SEWER LINE
- = STORM DRAIN LINE
- = WATER LINE
- = PHONE LINE
- = CABLE LINE
- = EDGE OF PAVEMENT
- = EDGE OF CONCRETE
- = MAJOR CONTOUR INTERVAL (5')
- = MINOR CONTOUR INTERVAL (1')
- = EXISTING EASEMENT
- = BRICKS
- = FENCE
- = ASPHALT
- = BUILDING
- = CONCRETE
- = DECK
- = BRICK

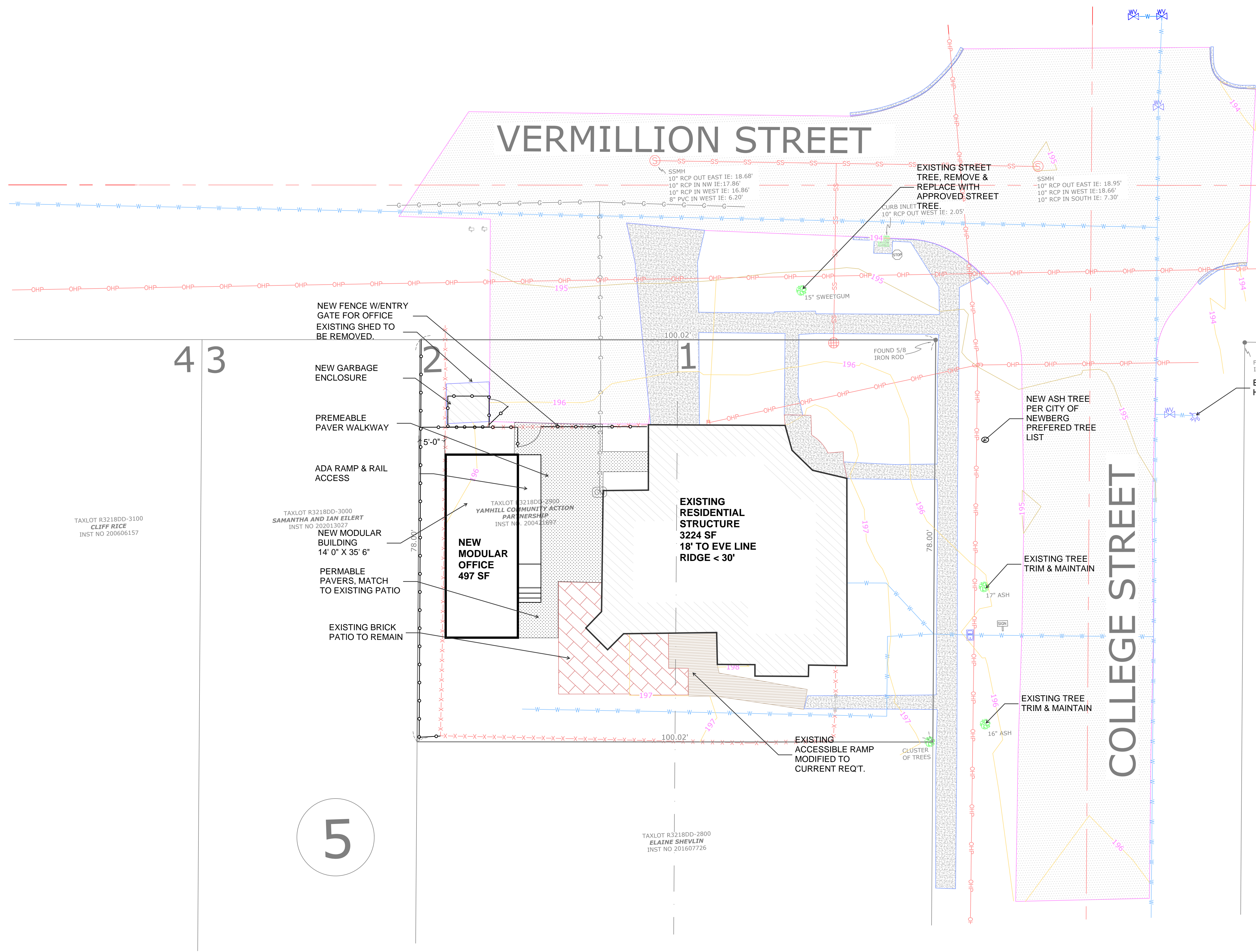
North

Scale: 1" = 10'



Location: IN A PORTION OF LOTS 1 AND 2, BLOCK 5, DESKINS THIRD ADDITION TO THE CITY OF NEWBERG, IN THE SW. 1/4 OF SECTION 18, T. 3 S., R. 2 W., WM., YAMHILL COUNTY, OREGON

Tax Lot: R3218DD-2900
Date: 2 FEBRUARY, 2023



4 3

VERMILLION STREET

COLLEGE STREET

5

TAXLOT R3218DD-3100
CLIFF RICE
INST NO 200606157

TAXLOT R3218DD-3000
SAMANTHA AND IAN ELLERT
INST NO 200013027

TAXLOT R3218DD-2900
YAMHILL COUNTY ACTION
PARTNERSHIP
INST NO 200411887

TAXLOT R3218DD-2800
ELAINE SHEVLIN
INST NO 201607726

- NEW FENCE WENTRY GATE FOR OFFICE EXISTING SHED TO BE REMOVED.
- NEW GARBAGE ENCLOSURE
- PERMEABLE PAVER WALKWAY
- ADA RAMP & RAIL ACCESS
- NEW MODULAR BUILDING 14' 0" X 35' 6"
- PERMEABLE PAVERS, MATCH TO EXISTING PATIO
- EXISTING BRICK PATIO TO REMAIN

EXISTING RESIDENTIAL STRUCTURE
3224 SF
18' TO EVE LINE
RIDGE < 30'

NEW MODULAR OFFICE
497 SF

EXISTING ACCESSIBLE RAMP
MODIFIED TO CURRENT REQ'T.

EXISTING STREET TREE, REMOVE & REPLACE WITH APPROVED STREET TREE

NEW ASH TREE PER CITY OF NEWBERG PREFERRED TREE LIST

EXISTING TREE TRIM & MAINTAIN

EXISTING TREE TRIM & MAINTAIN

EXISTING FIRE HYDRANT

COLLEGE STREET

DATE: 03/23/2023

ANYDOOR PLACE, NEWBERG
615 N. COLLEGE STREET
NEWBERG, OR

OWNER:
YAMHILL COUNTY ACTION PARTNERSHIP (YACAP)
CONTACT: Tandy Glass 503-857-2051 Tglass@yamhillcap.org

BUILDER:
MODS PDX

FS-1

FIRE SITE PLAN