

**Exhibit E:**  
**Yamhill County Assessor's Maps**

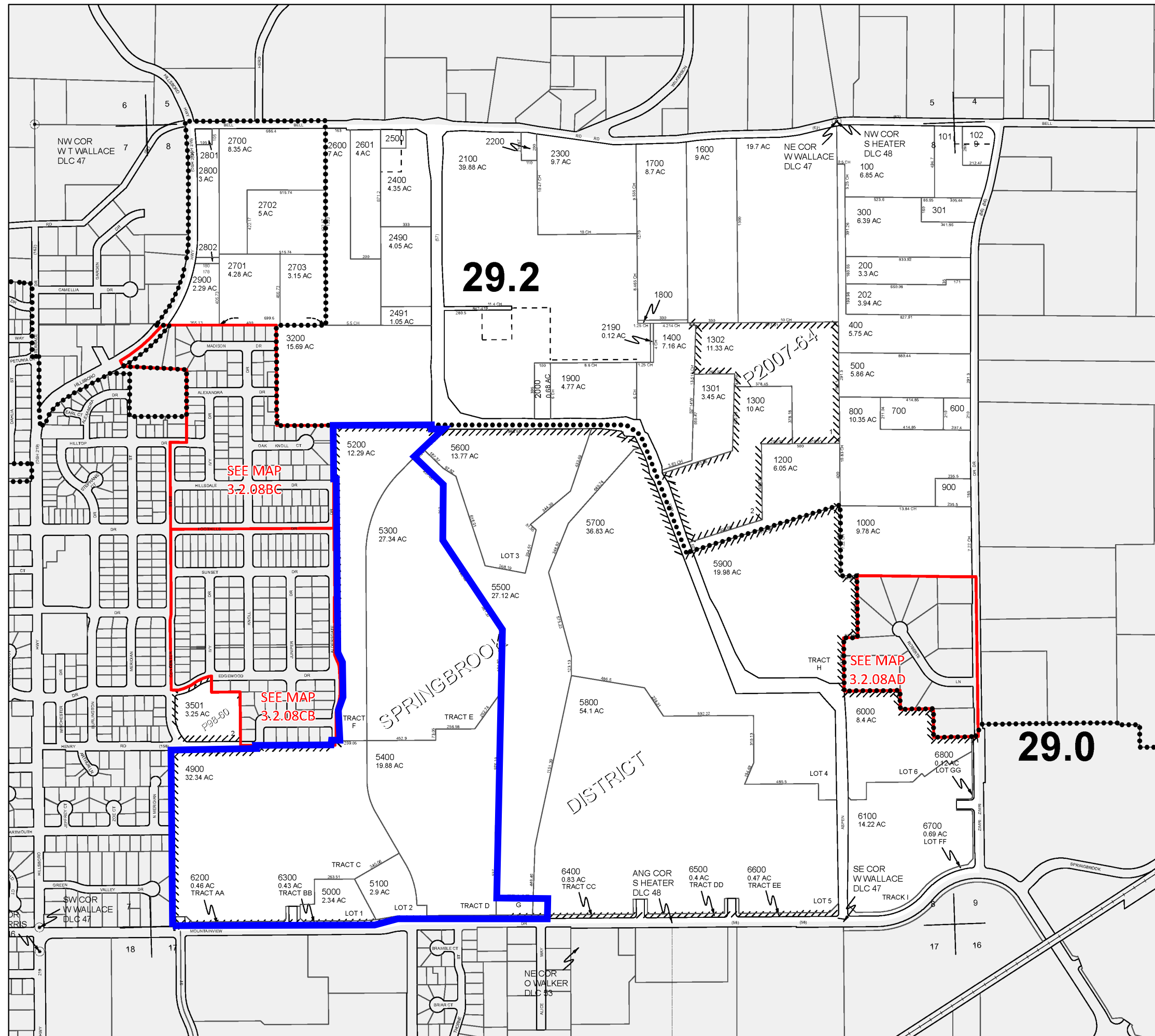
---

---



ASSESSMENT & TAX  
CARTOGRAPHY

SECTION 8 T.3S. R.2W. W.M.  
YAMHILL COUNTY OREGON  
1" = 400'



CANCELLED TAXLOTS:

- 4800
- 4700
- 4600
- 4500
- 4401
- 4400
- 4300
- 4200
- 4101
- 4100
- 4000
- 3900
- 3800
- 3700
- 3601
- 3600
- 3504
- 3503
- 3502
- 3400
- 3300
- 3100
- 3001
- 3000
- 1100
- 201

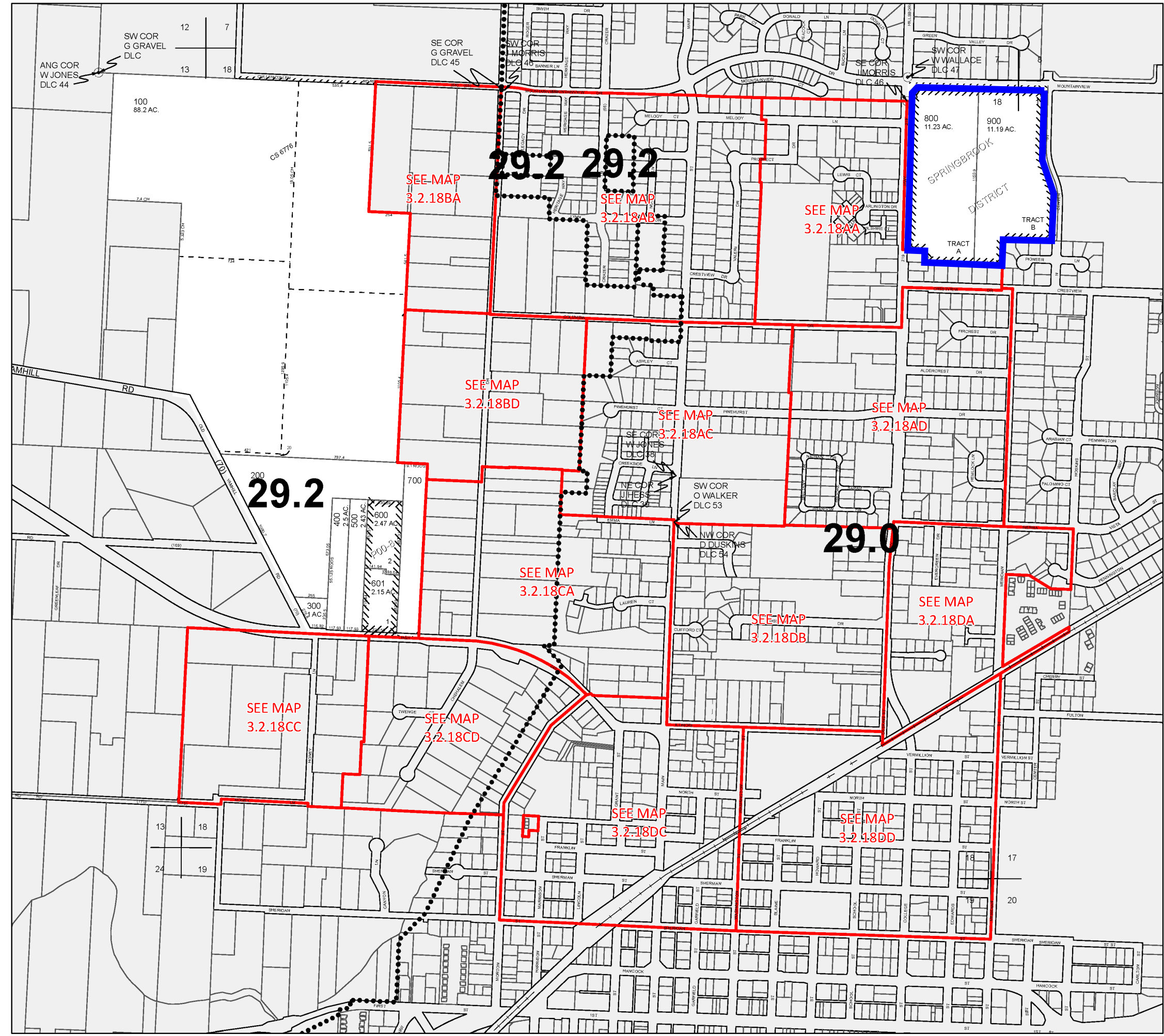
DATE PRINTED: 6/24/2019

This product is for Assessment and Taxation (A&T) purposes only and has not been prepared or is suitable for legal, engineering, surveying or any purposes other than assessment and taxation.



ASSESSMENT & TAX  
CARTOGRAPHY

SECTION 18 T.3S. R.2W. W.M.  
YAMHILL COUNTY OREGON  
1" = 400'



DATE PRINTED: 4/3/2015

This product is for Assessment and Taxation (A&T) purposes only and has not been prepared or is suitable for legal, engineering, surveying or any purposes other than assessment and taxation.