

CHEHALEM PARK & RECREATION DISTRICT

EWING YOUNG PARK

YAMHILL COUNTY, OREGON

SE 1/4, SEC 19, T. 3S., R. 2 W., W.M.

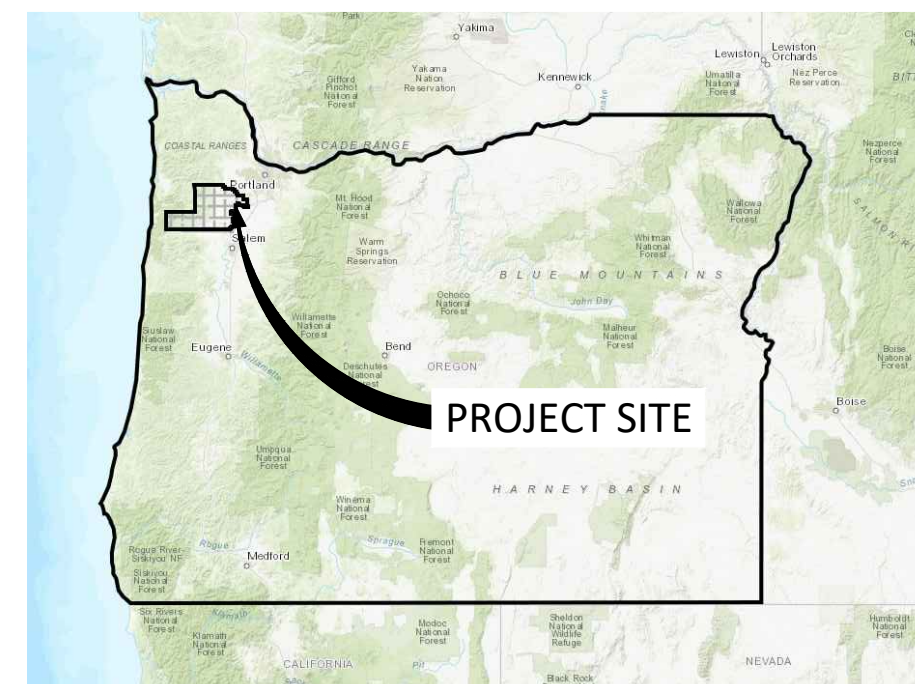
LAND USE PLAN SET - DECEMBER, 2022

OWNER

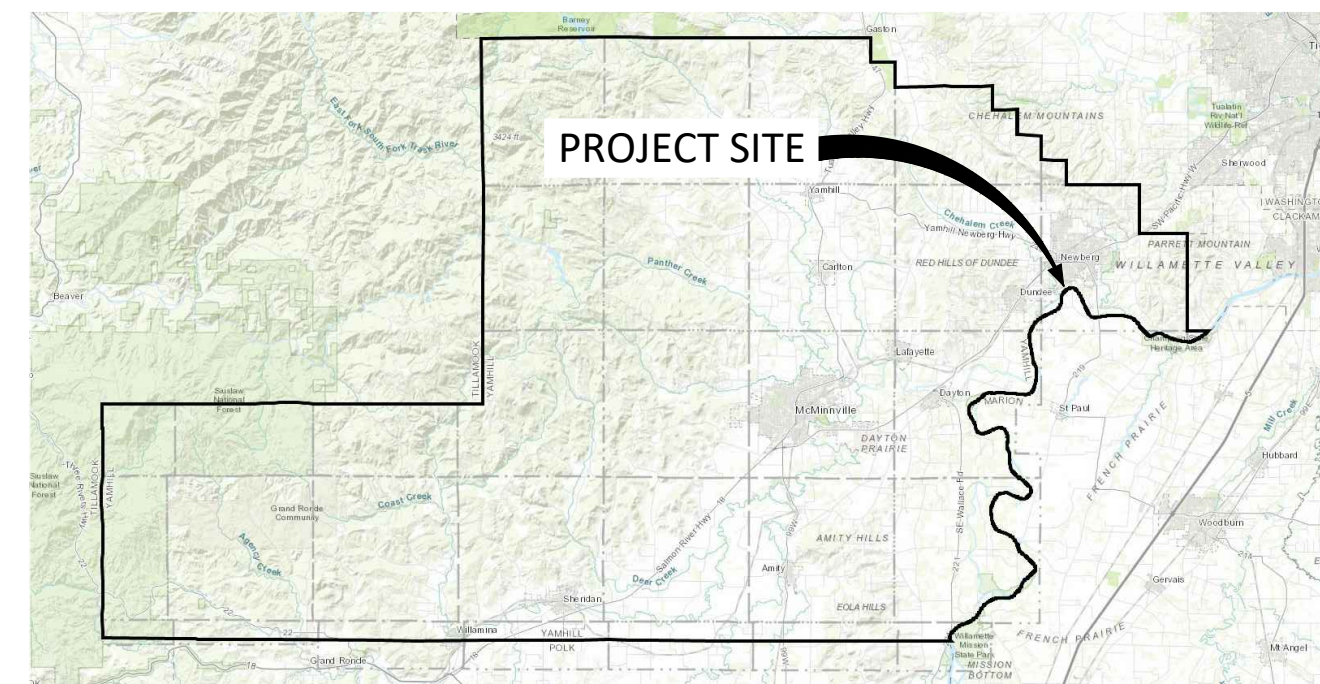
CHEHALEM PARK & RECREATION DISTRICT
125 S ELLIOT ROAD
NEWBERG, OREGON 97132
CONTACT: CASEY CREIGHTON
PHONE: (503) 537-2909
EMAIL:

PROJECT CONSULTANT

NV5, INC. - LANDSCAPE ARCHITECT/CIVIL ENGINEER
9450 SW COMMERCE CIRCLE, SUITE 300
WILSONVILLE, OREGON 97070
CONTACT: JON CHAMPLIN, RLA
PHONE: (503) 626-0455
FAX: (503) 526-0775
EMAIL: JON.CHAMPLIN@NV5.COM



OREGON

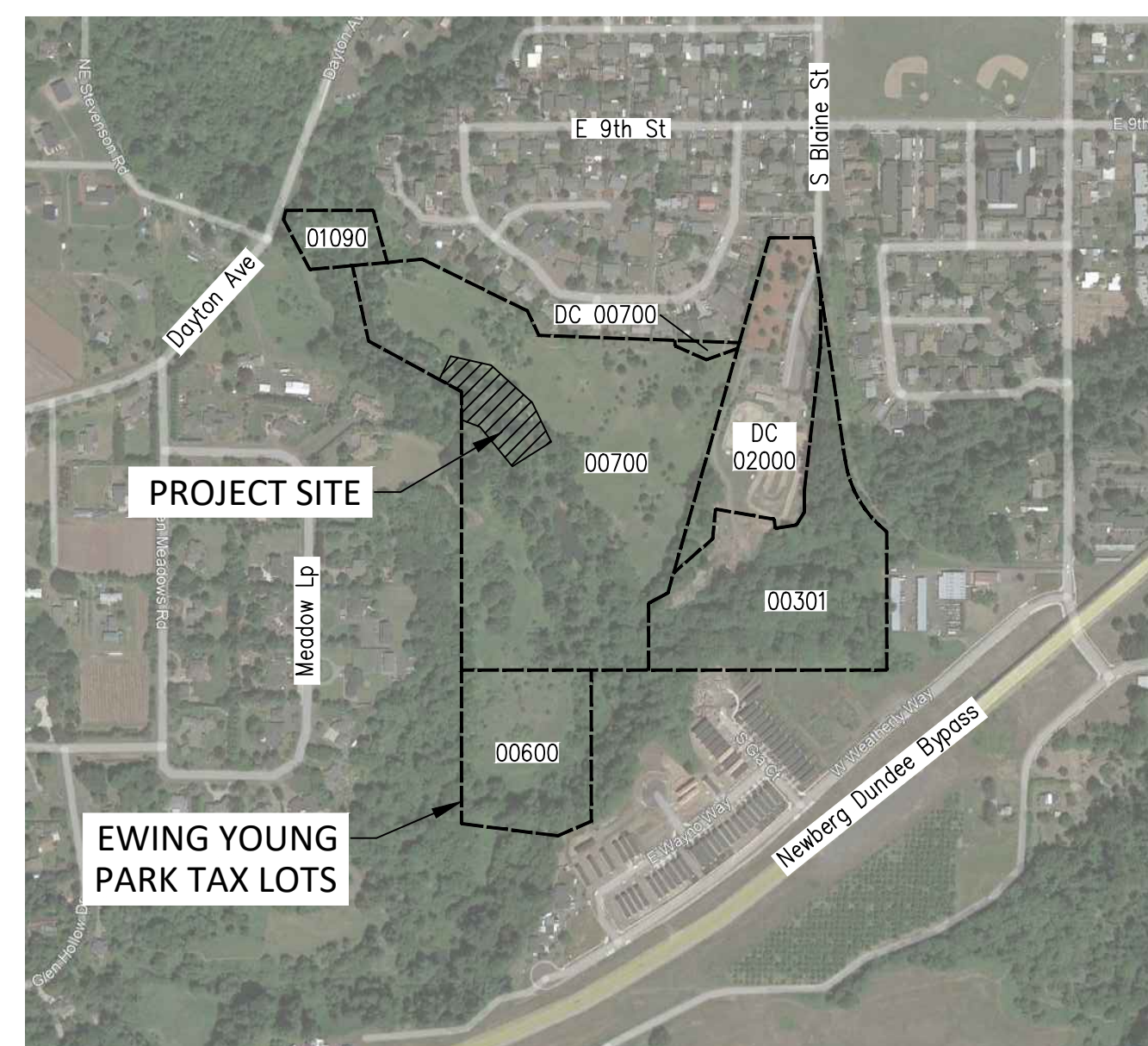


YAMHILL COUNTY

Sheet Number	Sheet Title
L0.00	COVER SHEET
L1.10	EXISTING CONDITIONS PLAN
L2.10	DEMOLITION & EROSION CONTROL PLAN
L3.10	SITE PLAN
L3.11	BRIDGE ENLARGEMENT PLAN
L4.10	GRADING PLAN
L5.10	PLANTING PLAN
L5.11	PLANTING DETAILS

GENERAL NOTES:

1. THE CONTRACTOR SHALL FIELD VERIFY ALL CONDITIONS AND DIMENSIONS PRIOR TO ANY WORK AND SHALL BE RESPONSIBLE FOR ALL WORK AND MATERIALS INCLUDING THOSE FURNISHED BY SUBCONTRACTORS.
2. DIMENSIONS TAKE PRECEDENCE OVER DRAWING. DO NOT SCALE DRAWINGS TO DETERMINE ANY LOCATIONS. THE OWNER SHALL BE NOTIFIED OF ANY DISCREPANCY PRIOR TO CONTINUING WITH WORK.
3. THE CONTRACTORS SHALL REPORT TO THE OWNER ANY ERRORS, INCONSISTENCIES, OR OMISSIONS HE OR SHE MAY DISCOVER. THE CONTRACTOR IS RESPONSIBLE FOR CORRECTING ANY ERROR AFTER THE START OF CONSTRUCTION WHICH HAS NOT BEEN BROUGHT TO THE ATTENTION OF THE OWNER. THE MEANS OF CORRECTING ANY ERROR SHALL FIRST BE APPROVED BY THE OWNER.
4. IT SHALL BE THE RESPONSIBILITY OF THE CONTRACTOR TO VERIFY LOCATION OF ALL EXISTING UTILITIES WHETHER SHOWN HEREIN OR NOT AND TO PROTECT THEM FROM DAMAGE. THE CONTRACTOR SHALL BEAR ALL EXPENSES OF REPAIR OR REPLACEMENT OF UTILITIES OR OTHER PROPERTY DAMAGED BY OPERATIONS IN CONJUNCTION WITH THE EXECUTION OF WORK.
5. AGENCY APPROVED PLANS SHALL BE KEPT IN A SECURE PLACE AND SHALL NOT BE USED BY WORKMEN. THE CONTRACTOR SHALL BE RESPONSIBLE THAT ALL SUBCONTRACTORS' CONSTRUCTION SETS REFLECT SAME INFORMATION. THE CONTRACTOR SHALL ALSO MAINTAIN, IN GOOD CONDITION, ONE COMPLETE SET OF PLANS WITH ALL REVISIONS, ADDENDUMS, AND CHANGE ORDERS, ON THE PREMISES AT ALL TIMES. THESE ARE NOT TO BE UNDER THE CARE OF THE JOB SUPERINTENDENT.
6. THE CONTRACTOR SHALL BE RESPONSIBLE FOR INTERIM TRAFFIC CONTROL DURING CONSTRUCTION ON OR ALONG ALL NEIGHBORHOOD STREETS.
7. THE CONTRACTOR SHALL BE RESPONSIBLE FOR THE COMPLETE SECURITY OF THE JOB SITE WHILE THE JOB IS IN PROGRESS AND UNTIL JOB COMPLETION. ANY DAMAGE INCLUDING GRAFFITI ON CONCRETE SHALL BE REMOVED BEFORE FINAL ACCEPTANCE.
8. ALL DEBRIS SHALL BE REMOVED FROM THE PREMISES AND ALL AREAS ACCESSIBLE TO THE PUBLIC SHALL BE LEFT IN A BROOM CLEAN CONDITION AT ALL TIMES.
9. THE CONTRACTOR IS SOLELY RESPONSIBLE FOR ALL CONSTRUCTION MEANS AND METHODS.
10. THE CONTRACTOR SHALL BE RESPONSIBLE FOR AND SHALL REPLACE OR REMEDY ANY FAULTY, IMPROPER OR INFERIOR MATERIALS OR WORKMANSHIP WHICH SHALL APPEAR, WITHIN ONE (1) YEAR AFTER THE COMPLETION AND ACCEPTANCE OF THE WORK UNDER THIS CONTRACT.
11. CONTRACTOR TO PROTECT ALL PLANT MATERIAL NOT SLATED FOR REMOVAL DURING CONSTRUCTION.



PROJECT VICINITY MAP
NOT TO SCALE

NV5

9450 SW Commerce Circle, Ste 300
Wilsonville, OR 97070
503-626-0455 www.nv5.com

COVER SHEET

EWING YOUNG PARK FOOTBRIDGE

CHEHALEM PARK AND RECREATION DISTRICT

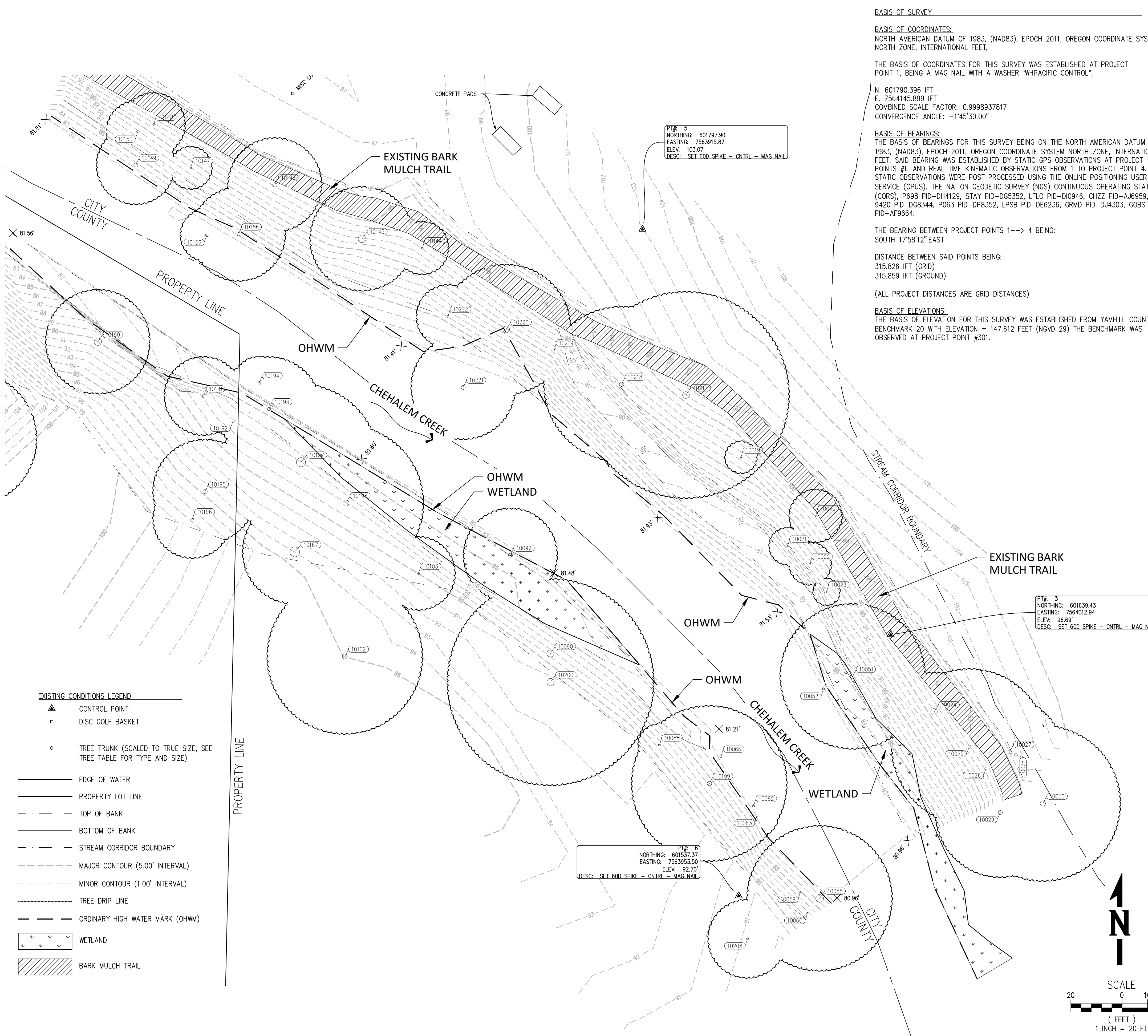
PROJECT NUMBER: C000191.00
DRAWING FILE NAME: C000191.00-LA01_L0.00-CS

SCALE: AS NOTED

SHEET INFO
DRAWN: JC
CHECKED: MS
APPROVED: JC
LAST EDIT: 8/18/2022
PLOT DATE: 12/15/2022
SUBMITTAL

REVISIONS
NO. BY DATE REMARKS

L0.00



BASIS OF SURVEY

BASIS OF COORDINATES:
 NORTH AMERICAN DATUM OF 1983, (NAD83), EPOCH 2011, OREGON COORDINATE SYSTEM NORTH ZONE, INTERNATIONAL FEET.

THE BASIS OF COORDINATES FOR THIS SURVEY WAS ESTABLISHED AT PROJECT POINT 1, BEING A MAG NAIL WITH A WASHER 'WHPACIFIC CONTROL'.

N. 601790.396 IFT
 E. 7564145.899 IFT
 COMBINED SCALE FACTOR: 0.9998937817
 CONVERGENCE ANGLE: -1'45"30.00"

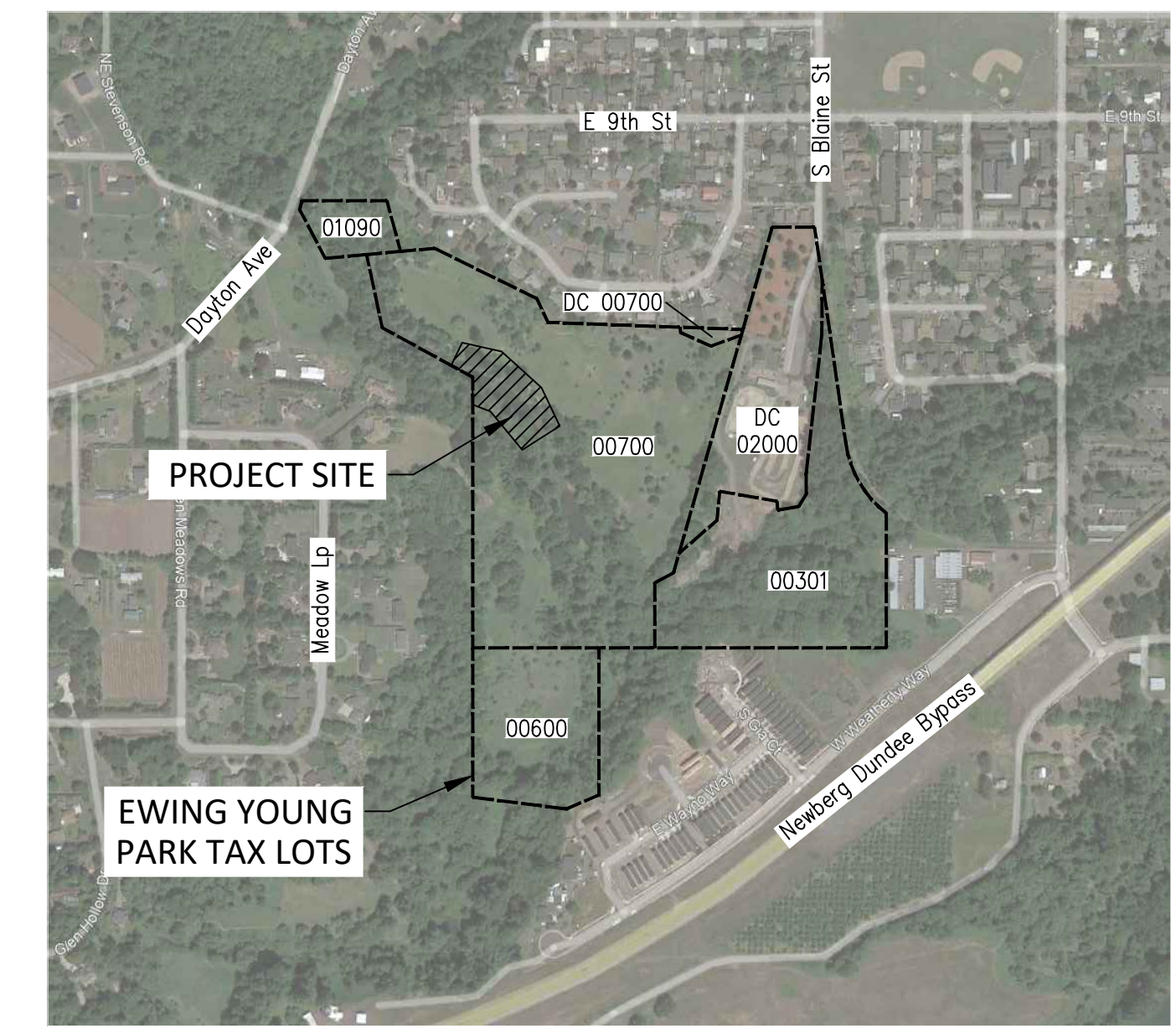
BASIS OF BEARINGS:
 THE BASIS OF BEARINGS FOR THIS SURVEY BEING ON THE NORTH AMERICAN DATUM OF 1983, (NAD83), EPOCH 2011, OREGON COORDINATE SYSTEM NORTH ZONE, INTERNATIONAL FEET. SAID BEARING WAS ESTABLISHED BY STATIC GPS OBSERVATIONS AT PROJECT POINTS #1, AND REAL TIME KINEMATIC OBSERVATIONS FROM 1 TO PROJECT POINT 4. THE STATIC OBSERVATIONS WERE POST PROCESSED USING THE ONLINE POSITIONING USER SERVICE (OPUS). THE NATION GEODETIC SURVEY (NGS) CONTINUOUS OPERATING STATIONS (CORS), P698 PID-DH4129, STAY PID-DG5352, LFLO PID-DI0946, CHZZ PID-AJ6959, 9420 PID-DG8344, P063 PID-DP8352, LPSB PID-DE6236, GRMD PID-DJ4303, GOBS PID-AF9664.

THE BEARING BETWEEN PROJECT POINTS 1--> 4 BEING:
 SOUTH 17°58'12" EAST

DISTANCE BETWEEN SAID POINTS BEING:
 315.826 IFT (GRID)
 315.859 IFT (GROUND)

(ALL PROJECT DISTANCES ARE GRID DISTANCES)

BASIS OF ELEVATIONS:
 THE BASIS OF ELEVATION FOR THIS SURVEY WAS ESTABLISHED FROM YAMHILL COUNTY BENCHMARK 20 WITH ELEVATION = 147.612 FEET (NGVD 29) THE BENCHMARK WAS OBSERVED AT PROJECT POINT #301.



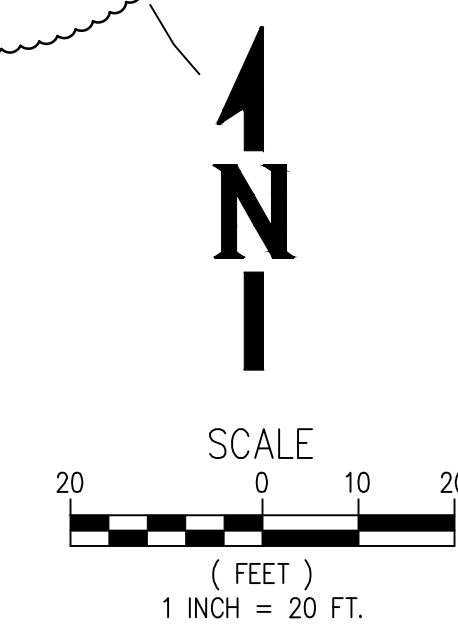
- NOTE:**
- PROPERTY LINES SHOWN HERE ON ARE BASED ON GIS DATA FROM THE YAMHILL COUNTY DATA SOURCES. ADDITIONAL RESOLUTION WILL REQUIRE MONUMENT RECOVERY.
 - TOPOGRAPHY OF CREEK MEASURED TO HIGH WATER MARK DUE TO UNSAFELY HIGH WATER IN CREEK. ESTIMATE 4-5 FEET DEPTH OF WATER AT WORSE SPOTS.

SITE SOILS:

- THE SITE SOILS CONSIST OF STIFF TO VERY STIFF CLAY AND SILT WITH TRACE SAND TO A DEPTH OF 13 BGS. BENEATH THE SILT AND CLAY, VERY DENSE, CEMENTED, CLAYEY SAND WITH GRAVEL EXISTS TO THE MAXIMUM DEPTH EXPLORED (16.1 FEET BGS) PER THE GEOTECHNICAL REPORT. AS THE GEOTECHNICAL REPORT STATES, THIS SOIL TYPE IS SUITABLE FOR THE CONSTRUCTION OF A FOOTBRIDGE WITH SHALLOW SPREAD FOUNDATIONS BEARING ON FIRM NATIVE CLAY AND SILT AND STRUCTURAL FILL OVERLYING FIRM NATIVE CLAY AND SILT.

TREE TABLE

POINT NUMBER	TREE TYPE	TRUNK DIAMETER	DRIP LINE DIAMETER
10019	TRDE	6	6
10020	TRDE	7	10
10021	TRDE	6	7
10022	TRDE	6	8
10023	TRDE X2	7	5
10024	TRCO	32	15
10025	TRCO	16	30
10026	TRDE	11	20
10027	TRDE	21	20
10028	TRDE	13	16
10029	TRDE	20	25
10030	TRDE	26	30
10051	TRDE	23	28
10052	TRDE	10	12
10058	TRDE	38	28
10059	TRDE	6	8
10060	TRDE	8	8
10062	TRDE	12	8
10063	TRDE	10	8
10065	TRDE	12	16
10088	TRDE	10	8
10090	TRDE	34	18
10092	TRDE	19	18
10102	TRCO	24	30
10103	TRDE	11	14
10144	TRDE	10	10
10145	TRCO	38	20
10146	TRDE	22	18
10147	TRDE	8	8
10148	TRDE	10	12
10149	TRDE	20	15
10150	TRDE	12	12
10155	TRDE	16	18
10156	TRDE	14	10
10167	TRCO	48	20
10188	TRCO	55	26
10189	TRDE	9	12
10190	TRDE	36	20
10191	TRDE X2	13	15
10192	TRDE	12	6
10193	TRDE	16	20
10194	TRDE	14	10
10195	TRDE	21	20
10196	TRDE	12	15
10197	TRCO	45	30
10198	TRCO	30	30
10199	TRDE	22	30
10200	TRDE	36	40
10208	TRDE	10	15
10217	TRDE	33	40
10218	TRDE	22	30
10219	TRDE	6	10
10221	TRDE	20	20
10222	TRDE	10	12
10023	TRDE X2	7	5
10191	TRDE X2	13	15



NV5
 9450 SW Commerce Circle, Ste 300
 Wilsonville, OR 97170
 503-628-0455 www.nv5.com

REVISIONS	NO.	BY	DATE	REMARKS

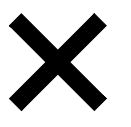
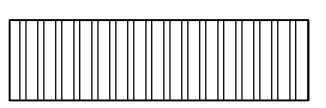
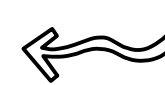
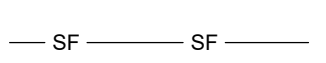
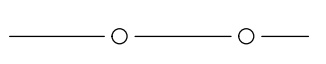
SHEET INFO	
DRAWN	JC
CHECKED	MS
APPROVED	JC
LAST EDIT	8/18/2022
PLOT DATE	8/22/2022
SUBMITTAL	

EXISTING CONDITIONS PLAN
EWING YOUNG PARK FOOTBRIDGE
CHEHALEM PARK AND RECREATION DISTRICT

PROJECT NUMBER: C000191.00
 DRAWING FILE NAME: C000191.00-LA01_L1.10-EX

SHEET NUMBER: **L1.10**

DEMOLITION AND EROSION CONTROL LEGEND

-  - EXISTING TREE TO BE REMOVED
-  - CLEARING AND GRUBBING LIMITS
-  - DIRECTION OF SLOPE
-  - SILT FENCE
-  - TREE PROTECTION FENCING

DEMOLITION NOTES

- CUT CLEAN ANY ROOTS 2" IN DIAMETER OR SMALLER WHILE EXCAVATING BELOW EXISTING TREE DRIPLINES OF TREES TO REMAIN, IF ROOTS ARE ENCOUNTERED.
- IF ROOTS LARGER THAN 2" IN DIAMETER ARE ENCOUNTERED WHILE EXCAVATING BELOW EXISTING TREE DRIPLINES OF TREES TO REMAIN, NOTIFY THE OWNER'S REPRESENTATIVE FOR APPROVAL PRIOR TO CUTTING ROOTS.

EROSION CONTROL NOTES

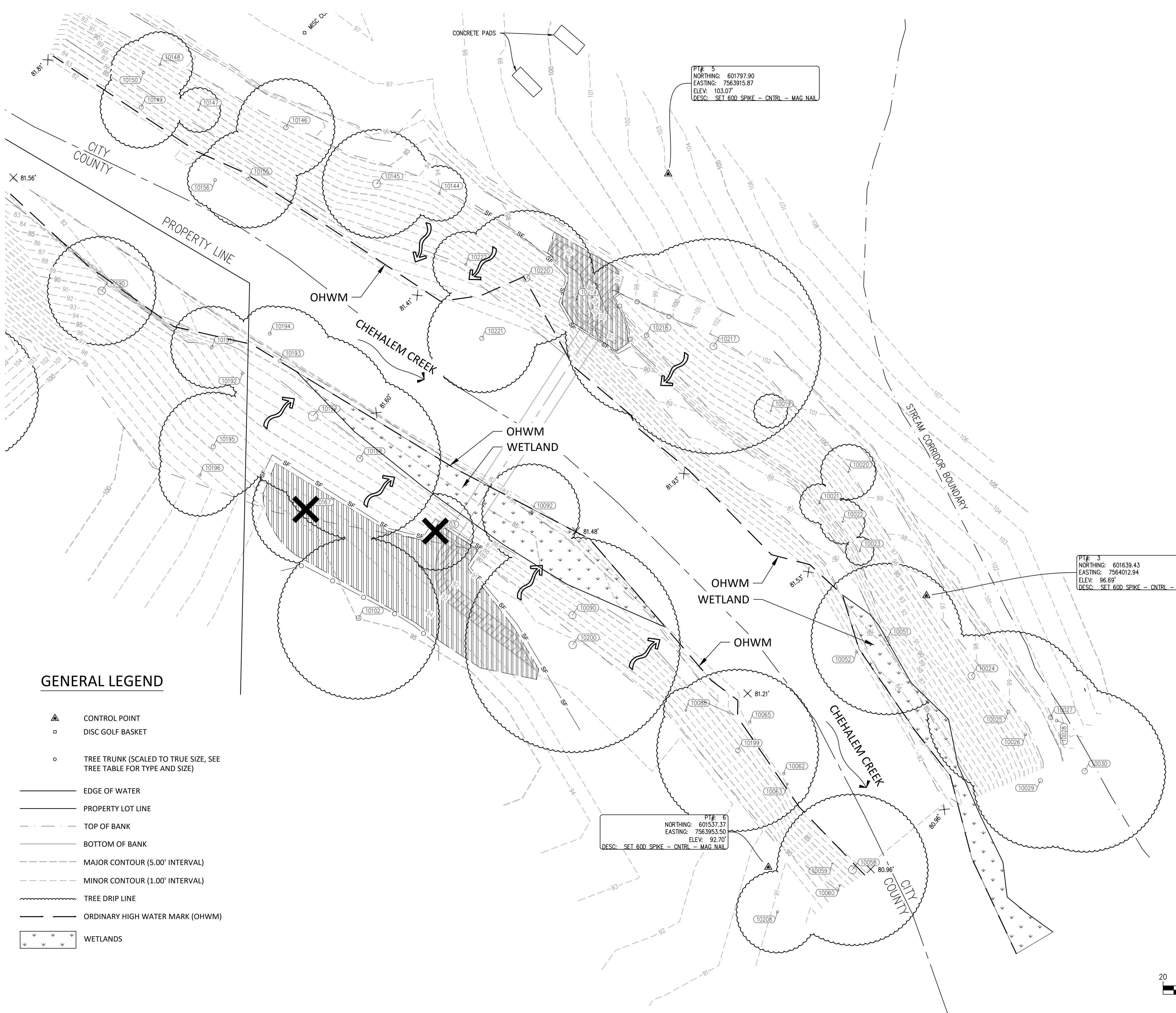
- PLACE EROSION CONTROL MATTING ON ALL AREAS TO BE PLANTED, PER SHEET L5.10 PLANTING PLAN.
- SILT FENCE AND EROSION CONTROL MATTING SHALL REMAIN IN PLACE FOR ONE CALENDAR YEAR FROM THE DATE OF SUBSTANTIAL COMPLETION.

TREE DEMO TABLE



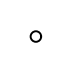



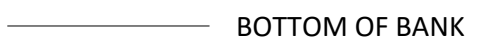




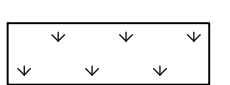
POINT NUMBER	TREE TYPE	TRUNK DIAMETER	DRIP LINE DIAMETER
10103	TRDE	11	14
10167	TRCO	48	20

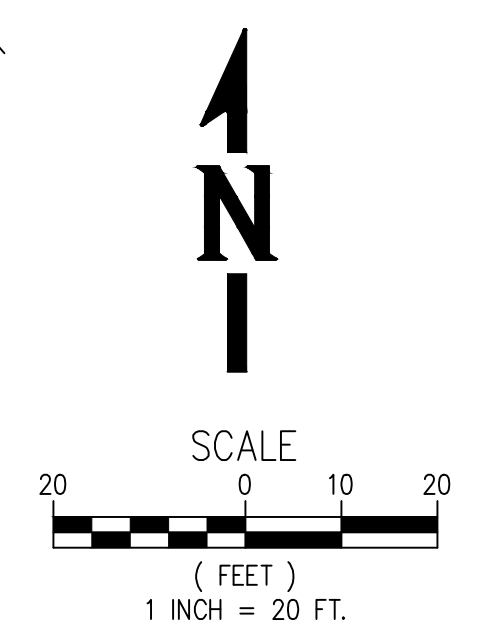
TREE TABLE

POINT NUMBER	TREE TYPE	TRUNK DIAMETER	DRIP LINE DIAMETER	TREATMENT
10019	TRDE	6	6	RETAIN
10020	TRDE	7	10	RETAIN
10021	TRDE	6	7	RETAIN
10022	TRDE	6	8	RETAIN
10023	TRDE X2	7	5	RETAIN
10024	TRCO	32	15	RETAIN
10025	TRCO	16	30	RETAIN
10026	TRDE	11	20	RETAIN
10027	TRDE	21	20	RETAIN
10028	TRDE	13	16	RETAIN
10029	TRDE	20	25	RETAIN
10030	TRDE	26	30	RETAIN
10051	TRDE	23	28	RETAIN
10052	TRDE	10	12	RETAIN
10058	TRDE	38	28	RETAIN
10059	TRDE	6	8	RETAIN
10060	TRDE	8	8	RETAIN
10062	TRDE	12	8	RETAIN
10063	TRDE	10	8	RETAIN
10065	TRDE	12	16	RETAIN
10088	TRDE	10	8	RETAIN
10090	TRDE	34	18	RETAIN
10092	TRDE	19	18	RETAIN
10102	TRCO	24	30	RETAIN
10103	TRDE	11	14	REMOVE
10144	TRDE	10	10	RETAIN
10145	TRCO	38	20	RETAIN
10146	TRDE	22	18	RETAIN
10147	TRDE	8	8	RETAIN
10148	TRDE	10	12	RETAIN
10149	TRDE	20	15	RETAIN
10150	TRDE	12	12	RETAIN
10155	TRDE	16	18	RETAIN
10156	TRDE	14	10	RETAIN
10167	TRCO	48	20	REMOVE
10188	TRCO	55	26	RETAIN
10189	TRDE	9	12	RETAIN
10190	TRDE	36	20	RETAIN
10191	TRDE X2	13	15	RETAIN
10192	TRDE	12	6	RETAIN
10193	TRDE	16	20	RETAIN
10194	TRDE	14	10	RETAIN
10195	TRDE	21	20	RETAIN
10196	TRDE	12	15	RETAIN
10197	TRCO	45	30	RETAIN
10198	TRCO	30	30	RETAIN
10199	TRDE	22	30	RETAIN
10200	TRDE	36	40	RETAIN
10208	TRDE	10	15	RETAIN
10217	TRDE	33	40	RETAIN
10218	TRDE	22	30	RETAIN
10219	TRDE	6	10	RETAIN
10221	TRDE	20	20	RETAIN
10222	TRDE	10	12	RETAIN
10023	TRDE X2	7	5	RETAIN
10191	TRDE X2	13	15	RETAIN



GENERAL LEGEND

-  CONTROL POINT
-  DISC GOLF BASKET
-  TREE TRUNK (SCALED TO TRUE SIZE, SEE TREE TABLE FOR TYPE AND SIZE)
-  EDGE OF WATER
-  PROPERTY LOT LINE
-  TOP OF BANK
-  BOTTOM OF BANK
-  MAJOR CONTOUR (5.00' INTERVAL)
-  MINOR CONTOUR (1.00' INTERVAL)
-  TREE DRIP LINE
-  ORDINARY HIGH WATER MARK (OHWM)
-  WETLANDS

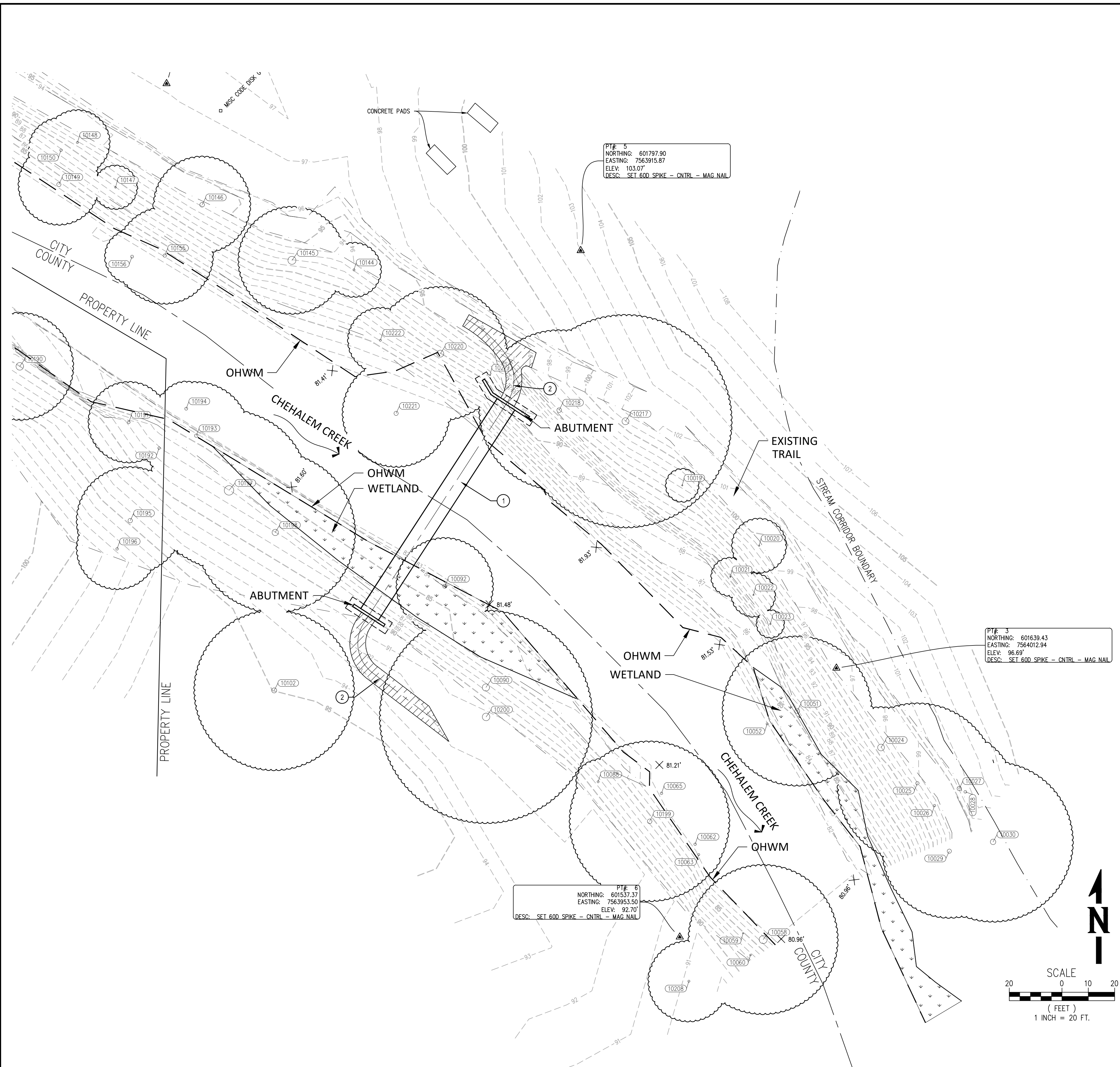


REVISIONS	NO.	BY	DATE	REMARKS


SHEET INFO	JC	MS	IC	LAST EDIT	PLOT DATE	SUBMITTAL
				8/18/2022	12/6/2022	

DEMOLITION & EROSION CONTROL PLAN
EWING YOUNG PARK FOOTBRIDGE
 CHEHALEM PARK AND RECREATION DISTRICT
 PROJECT NUMBER: C000191.00
 DRAWING FILE NAME: C000191.00-LA01_L2.10-DM
 SCALE: 1" = 20'

SHEET NUMBER
L2.10


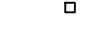

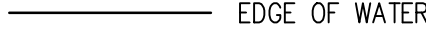
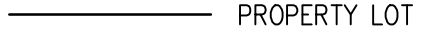


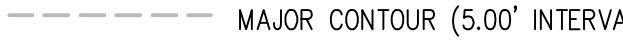
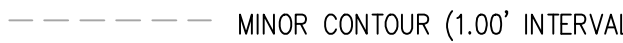


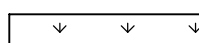


SITE PLAN LEGEND

 - 3" THICK BARK MULCH PATH, 6 FEET WIDE

- KEYNOTES:**
1. FOOTBRIDGE. SEE SHEET L3.11
 2. PROVIDE AND PLACE BARK MULCH PATH

LEGEND

-  CONTROL POINT
-  DISC GOLF BASKET
-  TREE TRUNK (SCALED TO TRUE SIZE, SEE TREE TABLE FOR TYPE AND SIZE)
-  EDGE OF WATER
-  PROPERTY LOT LINE
-  TOP OF BANK
-  BOTTOM OF BANK
-  MAJOR CONTOUR (5.00' INTERVAL)
-  MINOR CONTOUR (1.00' INTERVAL)
-  TREE DRIP LINE
-  ORDINARY HIGH WATER MARK (OHWM)
-  WETLAND

NV5
9450 SW Commerce Circle, Ste 300
Multnomah, OR 97149
503-628-0455 www.nv5.com

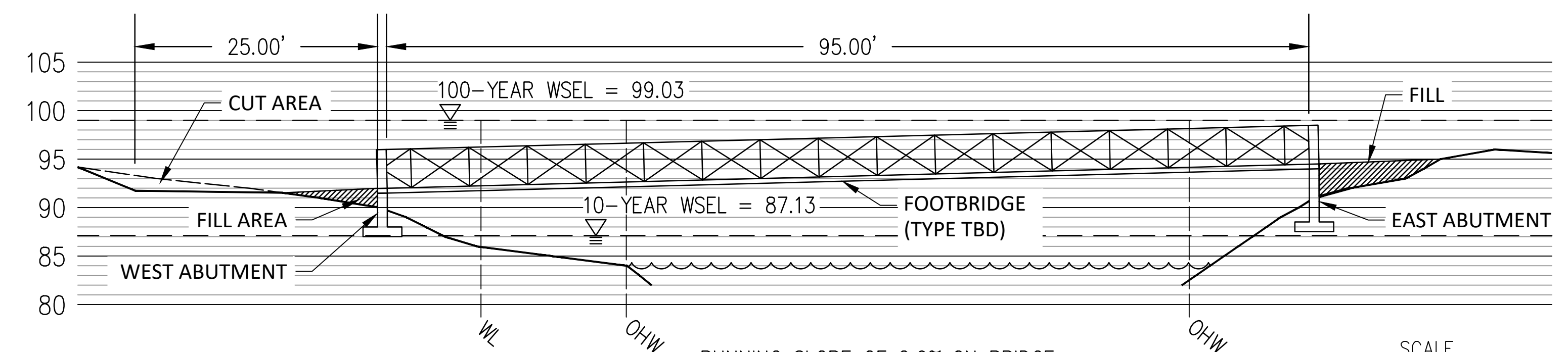
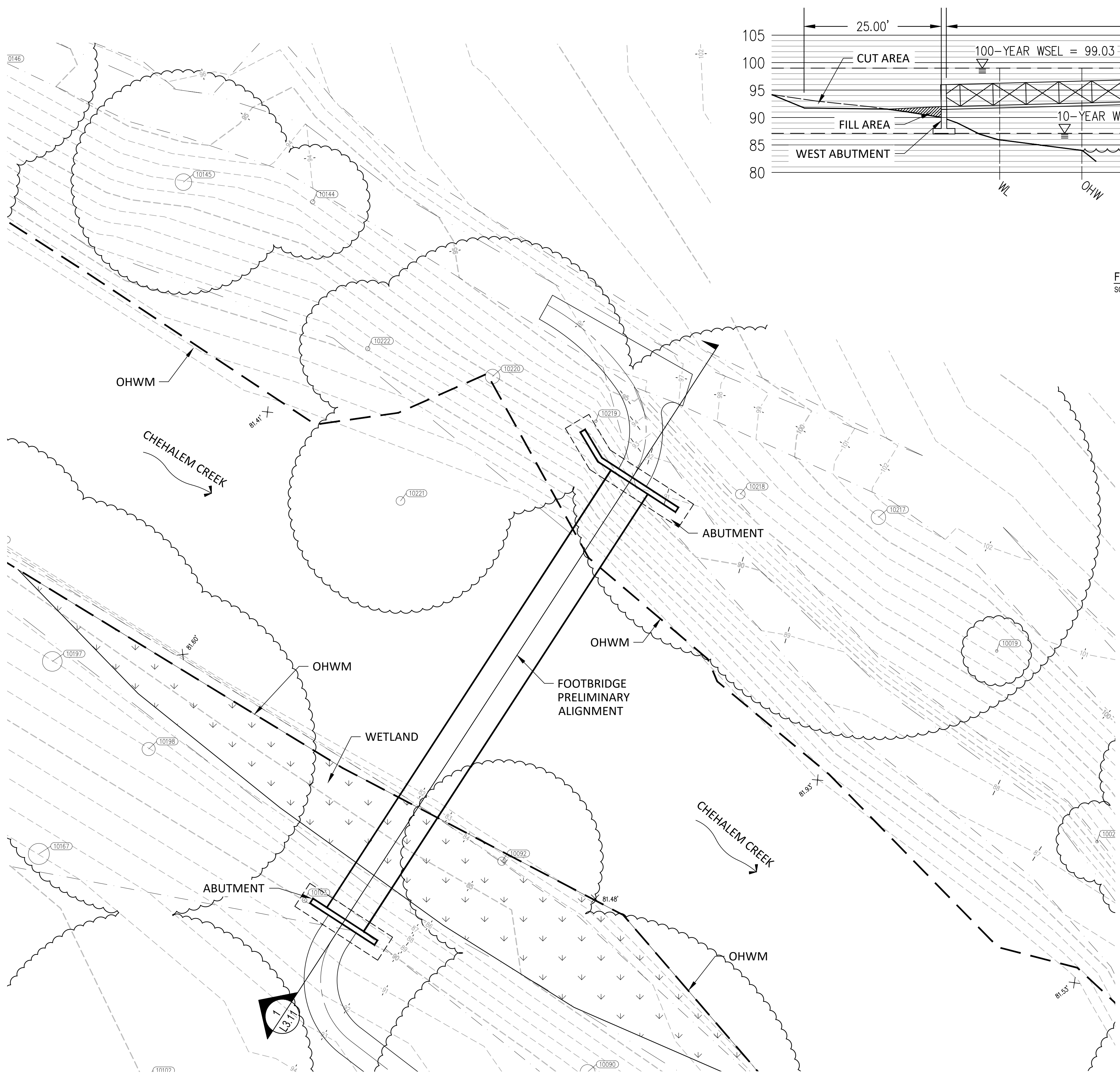
SITE PLAN
EWING YOUNG PARK FOOTBRIDGE

CHEHALEM PARK AND RECREATION DISTRICT

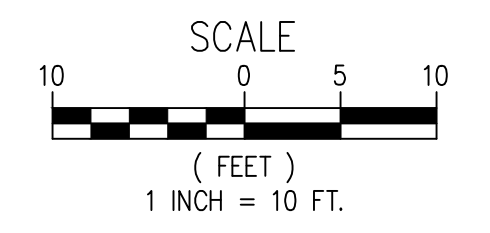
PROJECT NUMBER: C000191.00 DRAWING FILE NAME: C000191.00-LA01_L3.10-SP SCALE: 1" = 20'

SHEET INFO		REVISIONS	
DRAWN	JC	NO.	REMARKS
CHECKED	MS		
APPROVED	IC		
LAST EDIT	8/9/2022		
PLOT DATE	8/18/2022		
SUBMITTAL			

SHEET NUMBER
L3.10



RUNNING SLOPE OF 2.6% ON BRIDGE.
 WEST END BRIDGE DECKING @ 92.00
 EAST END BRIDGE DECKING @ 94.50



FOOTBRIDGE PROFILE
 SCALE: 1"=10'

LEGEND

- ▲ CONTROL POINT
- DISC GOLF BASKET
- TREE TRUNK (SCALED TO TRUE SIZE, SEE TREE TABLE FOR TYPE AND SIZE)
- EDGE OF WATER
- PROPERTY LOT LINE
- - - TOP OF BANK
- - - BOTTOM OF BANK
- - - MAJOR CONTOUR (5.00' INTERVAL)
- - - MINOR CONTOUR (1.00' INTERVAL)
- ~ ~ ~ TREE DRIP LINE
- - - ORDINARY HIGH WATER MARK (OHWM)
- WETLAND

SURVEY INFORMATION

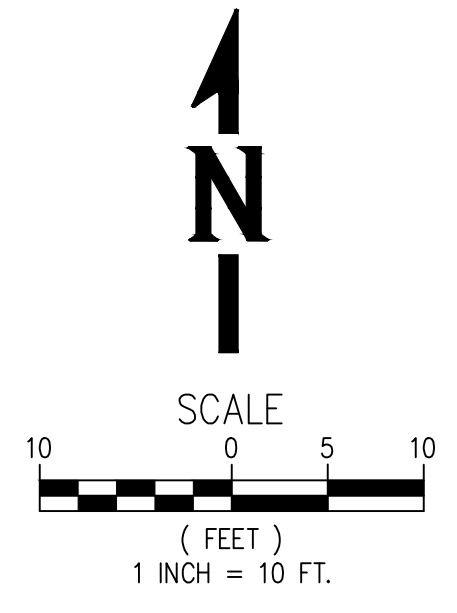
HORIZONTAL DATUM = NAD83, EPOCH 2011, OREGON
 COORDINATE SYSTEM NORTH ZONE, INTERNATIONAL FEET.

VERTICAL DATUM = NGVD29

NOTE: ELEVATIONS SHOWN ARE ON NGVD29 DATUM.

HYDRAULIC DATA		
RETURN PERIOD (YEARS)	WATER SURFACE ELEVATION (FT)	MAXIMUM VELOCITY (FPS)
10	87.13	N/A
100	99.03	3.5

BRIDGE DESIGN PARAMETERS	
BRIDGE (OPEN) SPAN	95.00 FT
WESTERN BRIDGE DECK ELEVATION	92.00
EASTERN BRIDGE DECK ELEVATION	94.50
ASSUMED GIRDER DEPTH	18 INCHES
ASSUMED RAIL (PARAPET) HEIGHT	42 INCHES



REVISIONS	NO.	BY	DATE	REMARKS

SHEET INFO	
DRAWN	JC
CHECKED	MS
APPROVED	JC
LAST EDIT	8/8/2022
PLOT DATE	8/18/2022
SUBMITTAL	

BRIDGE ENLARGEMENT PLAN
EWING YOUNG PARK FOOTBRIDGE
 CHEHALEM PARK AND RECREATION DISTRICT
 PROJECT NUMBER: C000191.00
 DRAWING FILE NAME: C000191.00-LA01_L3.11-BR.0
 SCALE: 1" = 20'

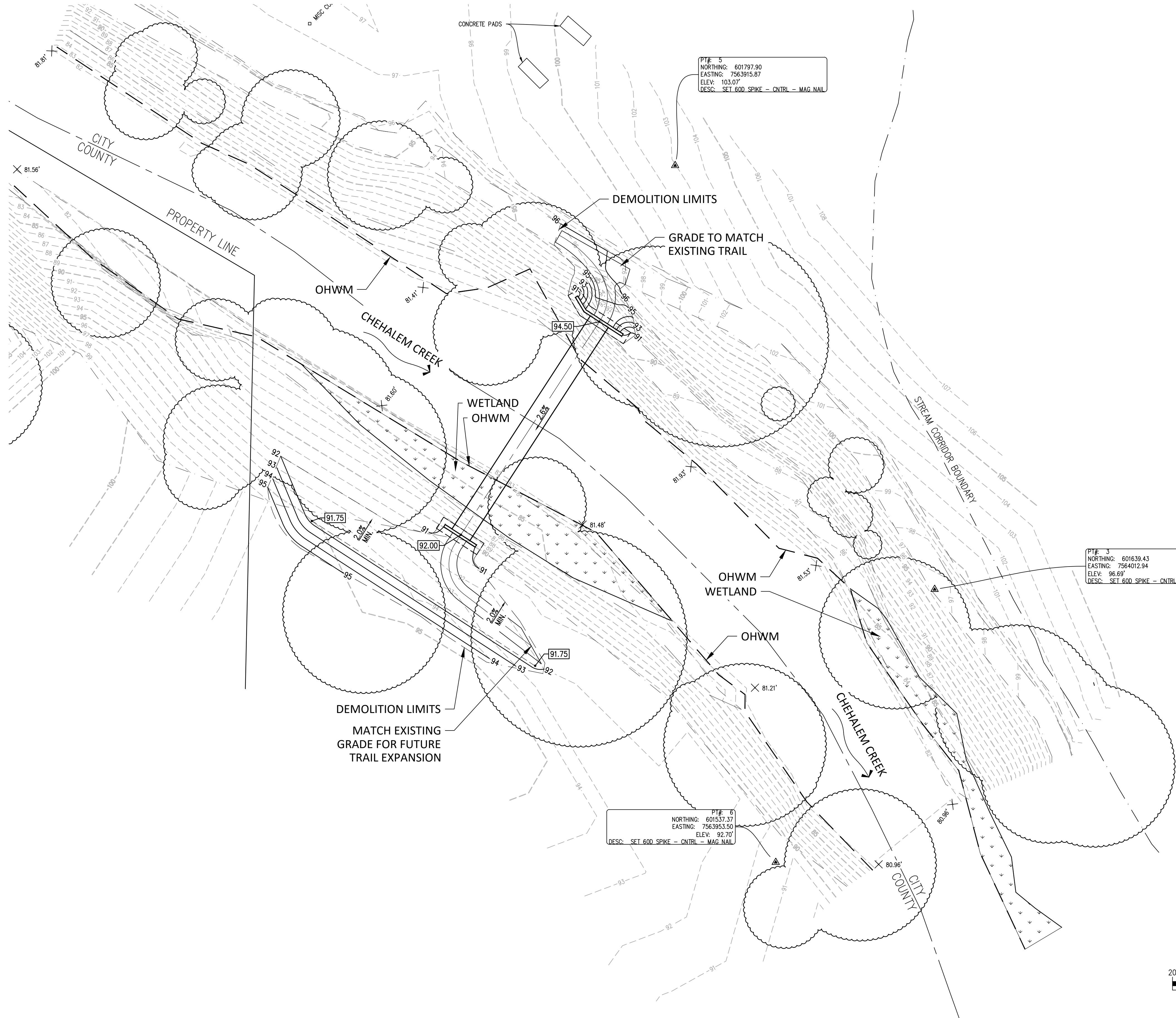
SHEET NUMBER
L3.11

GRADING LEGEND

- - - - - EXISTING CONTOUR
- PROPOSED CONTOUR
- BRIDGE CENTERLINE
- XX.XXX SPOT ELEVATION
- XX.XX% SLOPE

LEGEND

- ▲ CONTROL POINT
- DISC GOLF BASKET
- TREE TRUNK (SCALED TO TRUE SIZE, SEE TREE TABLE FOR TYPE AND SIZE)
- EDGE OF WATER
- PROPERTY LOT LINE
- TOP OF BANK
- BOTTOM OF BANK
- - - - - MAJOR CONTOUR (5.00' INTERVAL)
- - - - - MINOR CONTOUR (1.00' INTERVAL)
- ~~~~~ TREE DRIP LINE
- ORDINARY HIGH WATER MARK (OHWM)
- WETLAND
- DEMO LIMITS

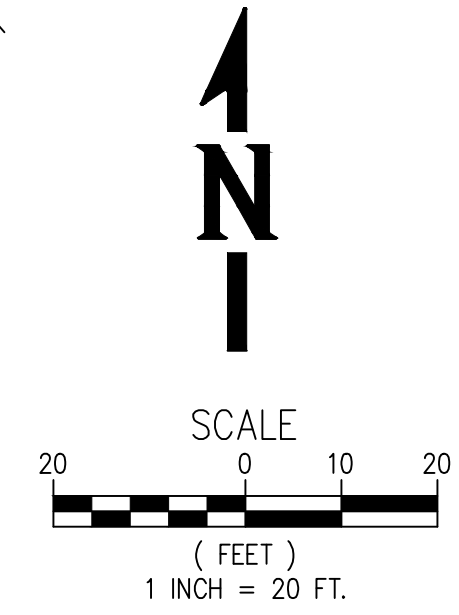


REVISIONS	NO.	BY	DATE	REMARKS

SHEET INFO	
DRAWN	JC
CHECKED	MS
APPROVED	JC
LAST EDIT	8/9/2022
PLOT DATE	8/18/2022
SUBMITTAL	

GRADING PLAN
EWING YOUNG PARK FOOTBRIDGE
 CHEHALEM PARK AND RECREATION DISTRICT
 PROJECT NUMBER: C000191.00
 DRAWING FILE NAME: C000191.00-LA01_L4.10-GP
 SCALE: 1" = 20'

SHEET NUMBER
L4.10



PLANTING LEGEND

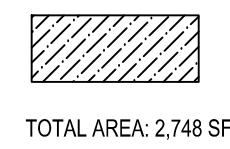
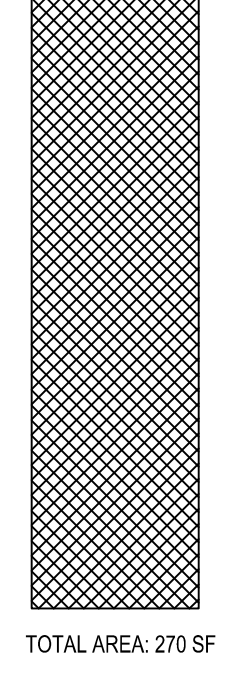
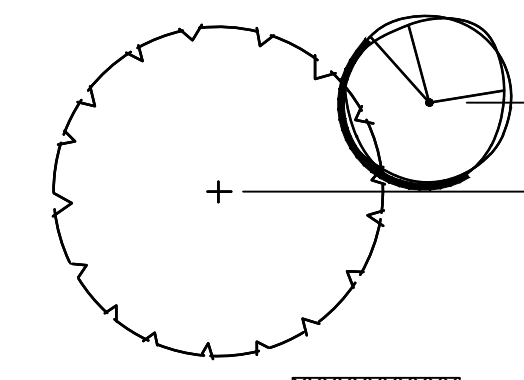
TREES					
QTY	BOTANICAL NAME	COMMON NAME	SIZE	SPACING	
9	ACER CIRCINATUM	VINE MAPLE	1" CALIPER	AS SHOWN	
2	FRAXINUS LATIFOLIA	OREGON ASH	1" CALIPER	AS SHOWN	

SHRUBS					
QTY	BOTANICAL NAME	COMMON NAME	CONTAINER	SIZE	SPACING
5	CORNUS SERICEA	RED-OSIER DOGWOOD	5 GAL	18" HEIGHT	60" O.C.
12	SPIRAEA DOUGLASII	DOUGLAS SPIREA	5 GAL	12" HEIGHT	36" O.C.
8	SYMPHORICARPOS ALBUS	SNOWBERRY	5 GAL	18" HEIGHT	48" O.C.

HERBACEOUS					
QTY	BOTANICAL NAME	COMMON NAME	CONTAINER	SIZE	SPACING
32	ATHYRIUM FILIX-FEMINA	LADY FERN	1 GAL	12" HEIGHT	24" O.C.
50	ELYMUS GLAUCUS	BLUE WILDRYE	1 GAL	12" HEIGHT	12" O.C.
50	SCIRPUS CYPERINUS	WOOLY SEDGE	1 GAL	12" HEIGHT	12" O.C.

SEEDING - PLANTING AREA MIX
 THE CONTRACTOR SHALL APPLY SUNMARK SEEDS "RIVERSIDE WOODS MIX" TO ANY AREAS THAT ARE DISTURBED DURING CONSTRUCTION.

SEEDING - RIPARIAN MIX
 THE CONTRACTOR SHALL APPLY SUNMARK SEEDS "NATIVE RIPARIAN MIX" TO ANY AREAS THE ARE DISTURBED DURING CONSTRUCTION.



LEGEND

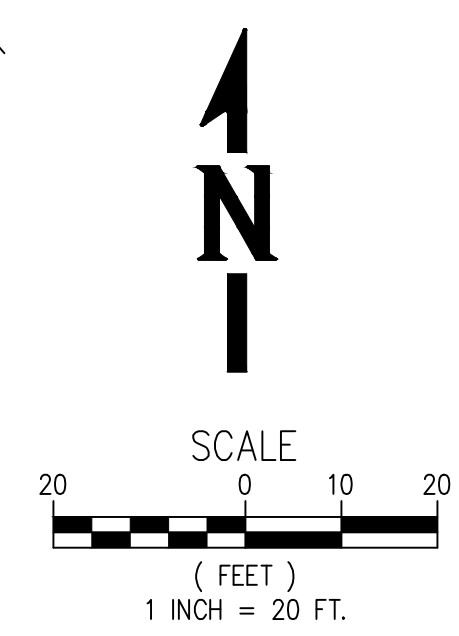
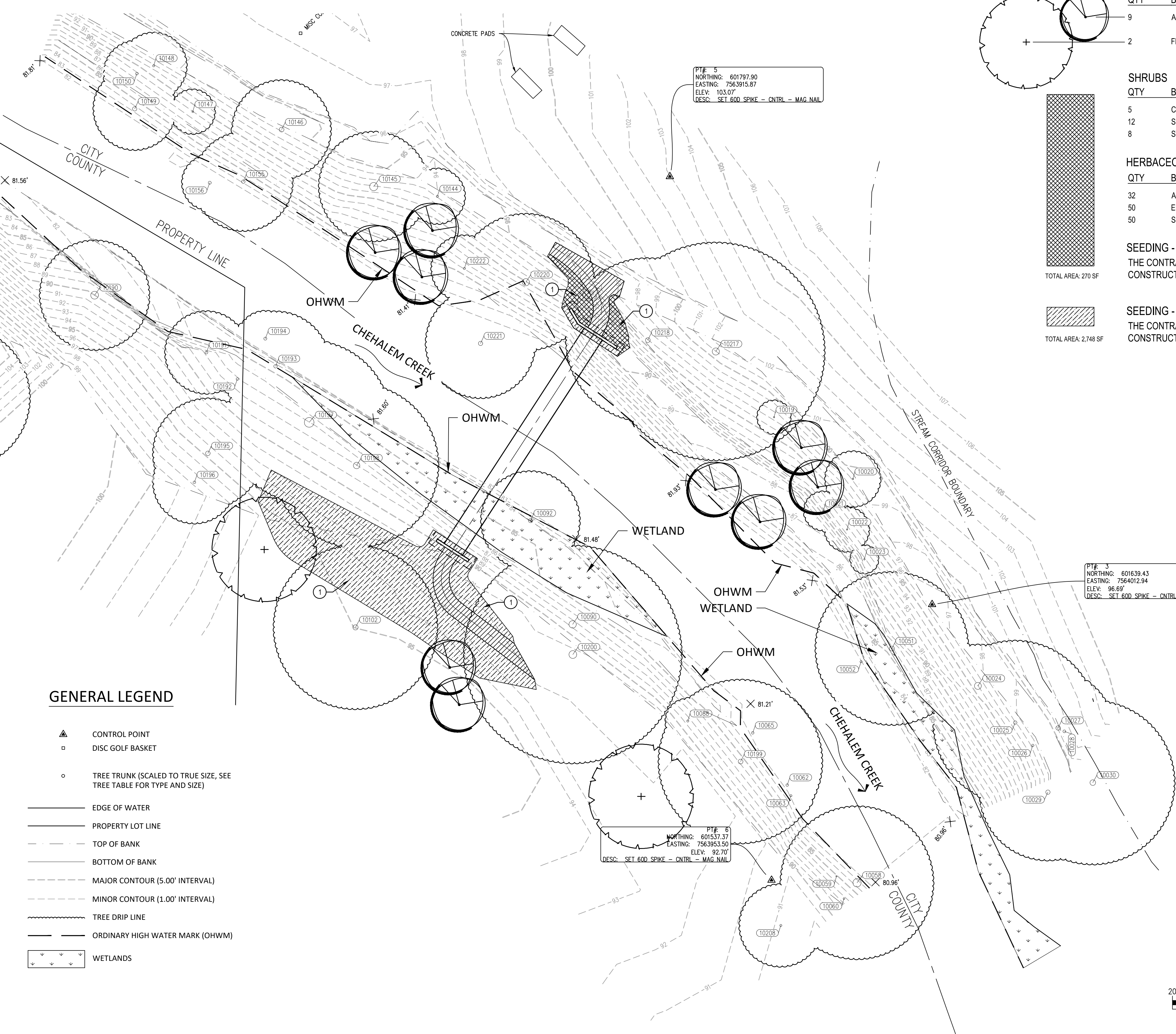
TRAIL SURFACE - 2" BARK MULCH (636 SF)

KEYNOTES:

- ① PROVIDE AND PLACE EROSION CONTROL MATTING WHERE SHOWN AND NOTED - 287 SY TOTAL

GENERAL LEGEND

- ▲ CONTROL POINT
- DISC GOLF BASKET
- TREE TRUNK (SCALED TO TRUE SIZE, SEE TREE TABLE FOR TYPE AND SIZE)
- EDGE OF WATER
- PROPERTY LOT LINE
- - - TOP OF BANK
- - - BOTTOM OF BANK
- - - MAJOR CONTOUR (5.00' INTERVAL)
- - - MINOR CONTOUR (1.00' INTERVAL)
- ~ ~ ~ TREE DRIP LINE
- ORDINARY HIGH WATER MARK (OHWM)
- WETLANDS

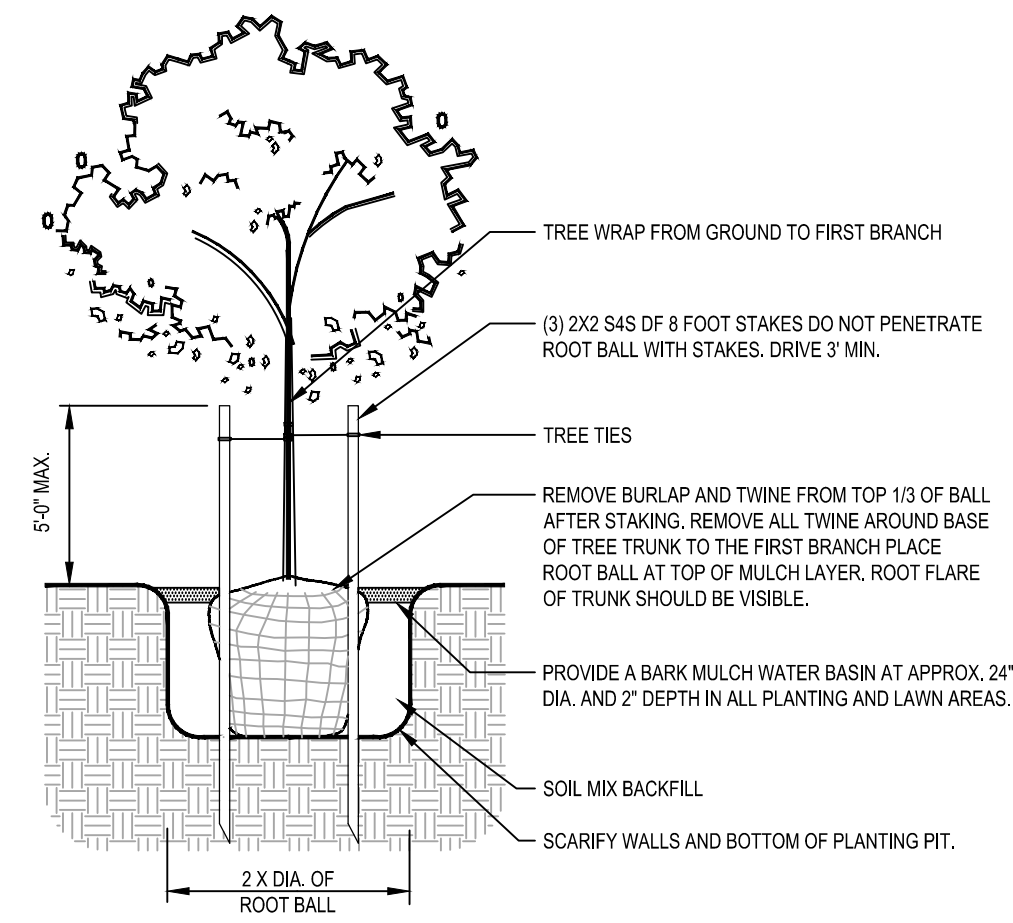


REVISIONS	NO.	BY	DATE	REMARKS

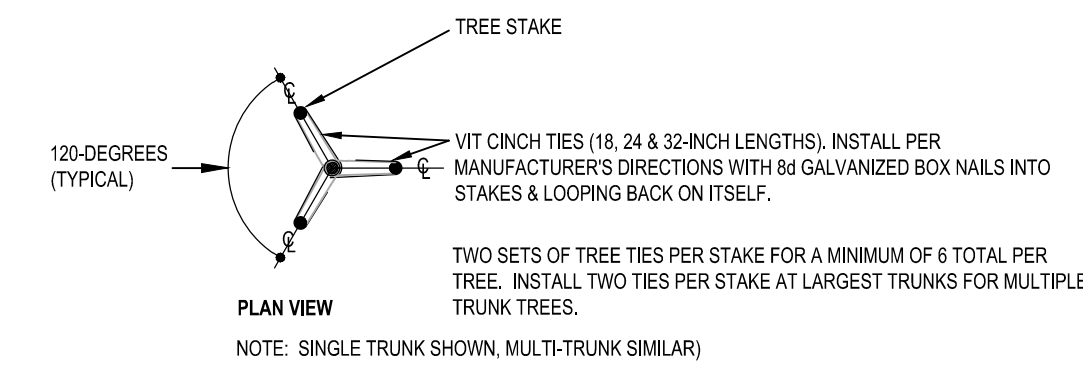
SHEET INFO	
DRAWN	JC
CHECKED	MS
APPROVED	JC
LAST EDIT	8/18/2022
PLOT DATE	12/6/2022
SUBMITTAL	

PLANTING PLAN
EWING YOUNG PARK FOOTBRIDGE
 CHEHALEM PARK AND RECREATION DISTRICT
 PROJECT NUMBER: C000191.00-LA01_L5.10-LP
 DRAWING FILE NAME: C000191.00-LA01_L5.10-LP
 SCALE: 1" = 20'

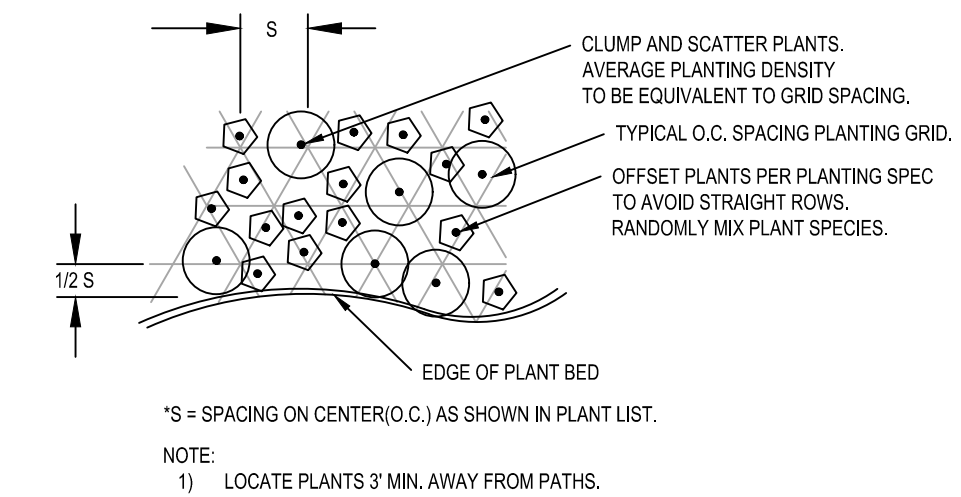
SHEET NUMBER
L5.10



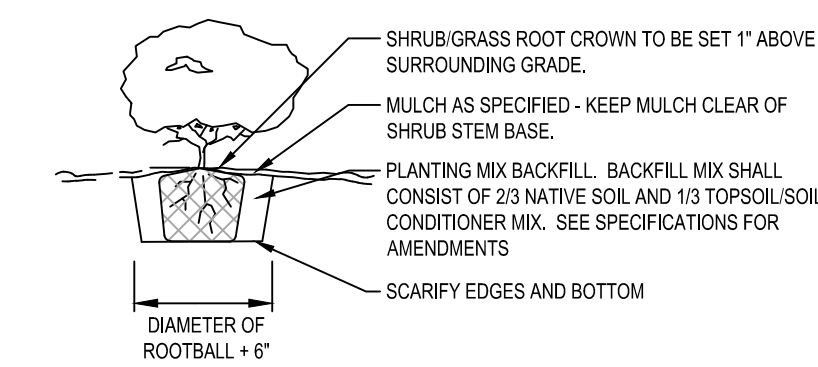
DECIDUOUS TREE PLANTING DETAIL 1
SCALE: N.T.S. L5.11



TREE STAKING/GUYING 2
SCALE: N.T.S. L5.11



NATIVE PLANT SPACING DETAIL 3
SCALE: N.T.S. L5.11



SHRUB/GRASS PLANTING DETAIL 4
SCALE: N.T.S. L5.11



POTENTIAL UNDERGROUND FACILITY OWNERS "ONE CALL" UTILITY NOTIFICATION CENTER 1-800-332-2344

ATTENTION: OREGON LAW REQUIRES YOU TO FOLLOW RULES ADOPTED BY THE OREGON UTILITY NOTIFICATION CENTER. THOSE RULES ARE SET FORTH IN OAR 952-001-0010 THROUGH OAR 952-001-0090. YOU MAY OBTAIN COPIES OF THE RULES BY CALLING THE CENTER. (NOTE: THE TELEPHONE NUMBER FOR THE OREGON UTILITY NOTIFICATION CENTER IS 1-800-332-2344 or 811).

NV5 9450 SW Commerce Circle, Ste 300 Milwaukie, OR 97127 503-628-0455 www.NV5.com		SHEET NUMBER L5.11	
		PROJECT NUMBER C000191.00	
DRAWING FILE NAME C000191.00-LA01_L5.11-DT		SCALE 1" = 20'	
PLANTING DETAILS EWING YOUNG PARK FOOTBRIDGE CHEHALEM PARK AND RECREATION DISTRICT		DRAWN: JC	
		CHECKED: MS	
APPROVED: JC		LAST EDIT: 8/18/2022	
PLOT DATE: 8/22/2022		SUBMITTAL	
REVISIONS		REMARKS	
NO.	BY	DATE	