



NEW APARTMENTS FOR :  
**GROVE DEVELOPMENT**  
 1015 N. SPRINGBROOK RD.  
 NEWBERG, OREGON

CONTRACTOR:  
 GROVE DEVELOPMENT, INC.  
 6500 SW BEAVERTON-  
 HILLSDALE HWY. #3  
 PORTLAND, OR 97225  
 (503) 793-3299  
 CCB# 129694

SURVEY:  
 PIONEER DESIGN GROUP, INC.  
 92020 SW WASHINGTON SQUARE RD.  
 SUITE 170  
 PORTLAND, OR 97223  
 (503) 643-8286

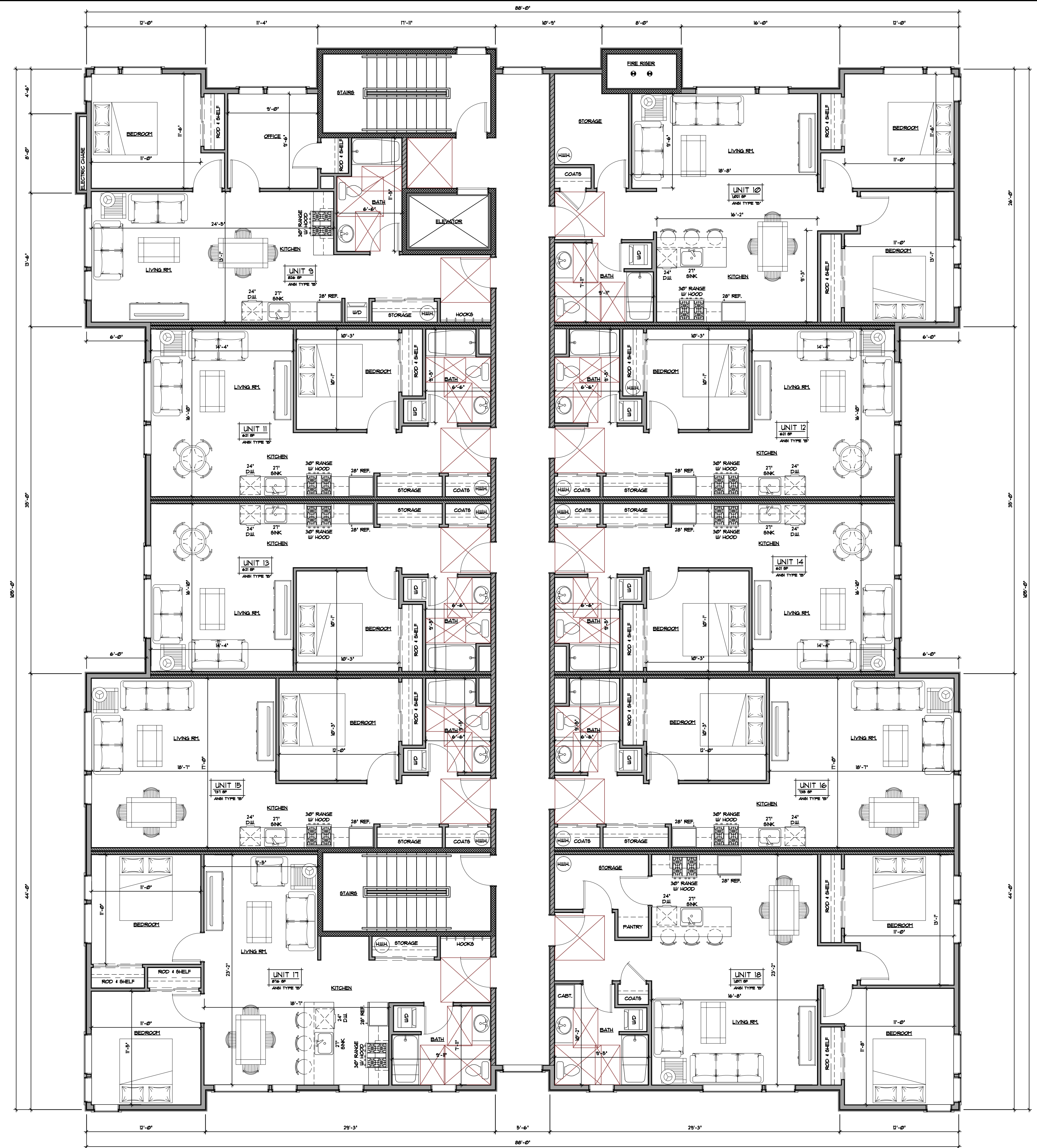
CIVIL ENGINEER:  
 PIONEER DESIGN GROUP, INC.  
 92020 SW WASHINGTON SQUARE RD.  
 SUITE 170  
 PORTLAND, OR 97223  
 (503) 643-8286

DESIGN REVIEW SUBMITTAL

PROPOSED  
**1ST LEVEL FLOOR PLAN** 1,050 GROSS SQ. FT.  
 SCALE: 3/16" = 1'-0"

REVISED
DATED 10/18/22
DRAWN SSR
CHECKED
1ST FLOOR PLAN





NEW APARTMENTS FOR :  
**GROVE DEVELOPMENT**  
 1075 N. SPRINGBROOK RD.  
 NEWBERG, OREGON

CONTRACTOR:  
 GROVE DEVELOPMENT, INC.  
 6500 SW BEAVERTON-  
 HILLSDALE HWY. #3  
 PORTLAND, OR 97225  
 (503) 793-3299  
 CCB# 129694

SURVEY:  
 PIONEER DESIGN GROUP, INC.  
 92020 SW WASHINGTON SQUARE RD.  
 SUITE 170  
 PORTLAND, OR 97223  
 (503) 643-8286

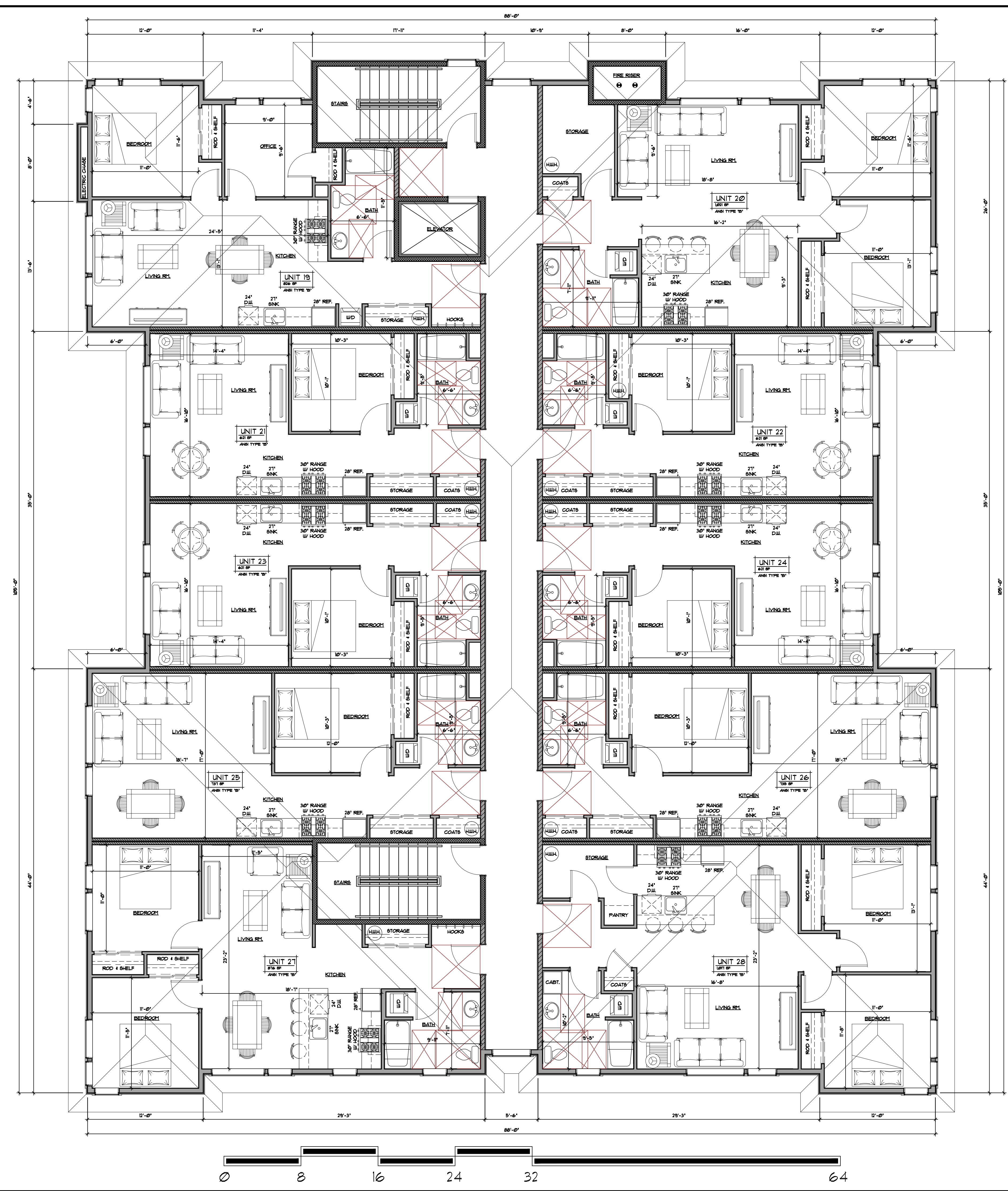
CIVIL ENGINEER:  
 PIONEER DESIGN GROUP, INC.  
 92020 SW WASHINGTON SQUARE RD.  
 SUITE 170  
 PORTLAND, OR 97223  
 (503) 643-8286

DESIGN REVIEW SUBMITTAL

REVISED
DATED 10/18/22
DRAWN SSR
CHECKED
2ND FLOOR PLAN

PROPOSED  
**2ND LEVEL FLOOR PLAN** 8886 GROSS SQ. FT.  
 A30 SCALE: 3/16" = 1'-0"





NEW APARTMENTS FOR :  
**GROVE DEVELOPMENT**  
 1075 N. SPRINGBROOK RD.  
 NEUBERG, OREGON

CONTRACTOR:  
 GROVE DEVELOPMENT, INC.  
 6500 SW BEAVERTON-  
 HILLSDALE HWY. #3  
 PORTLAND, OR 97225  
 (503) 793-3299  
 CCB# 129694

SURVEY:  
 PIONEER DESIGN GROUP, INC.  
 92020 SW WASHINGTON SQUARE RD.  
 SUITE 170  
 PORTLAND, OR 97223  
 (503) 643-8286

CIVIL ENGINEER:  
 PIONEER DESIGN GROUP, INC.  
 92020 SW WASHINGTON SQUARE RD.  
 SUITE 170  
 PORTLAND, OR 97223  
 (503) 643-8286

DESIGN REVIEW SUBMITTAL

PROPOSED  
**3RD LEVEL FLOOR PLAN** 8686 GROSS SQ. FT.  
 A40 SCALE: 3/16" = 1'-0"

REVISED
DATED 10/18/22
DRAWN SSR
CHECKED
3RD FLOOR PLAN
4