

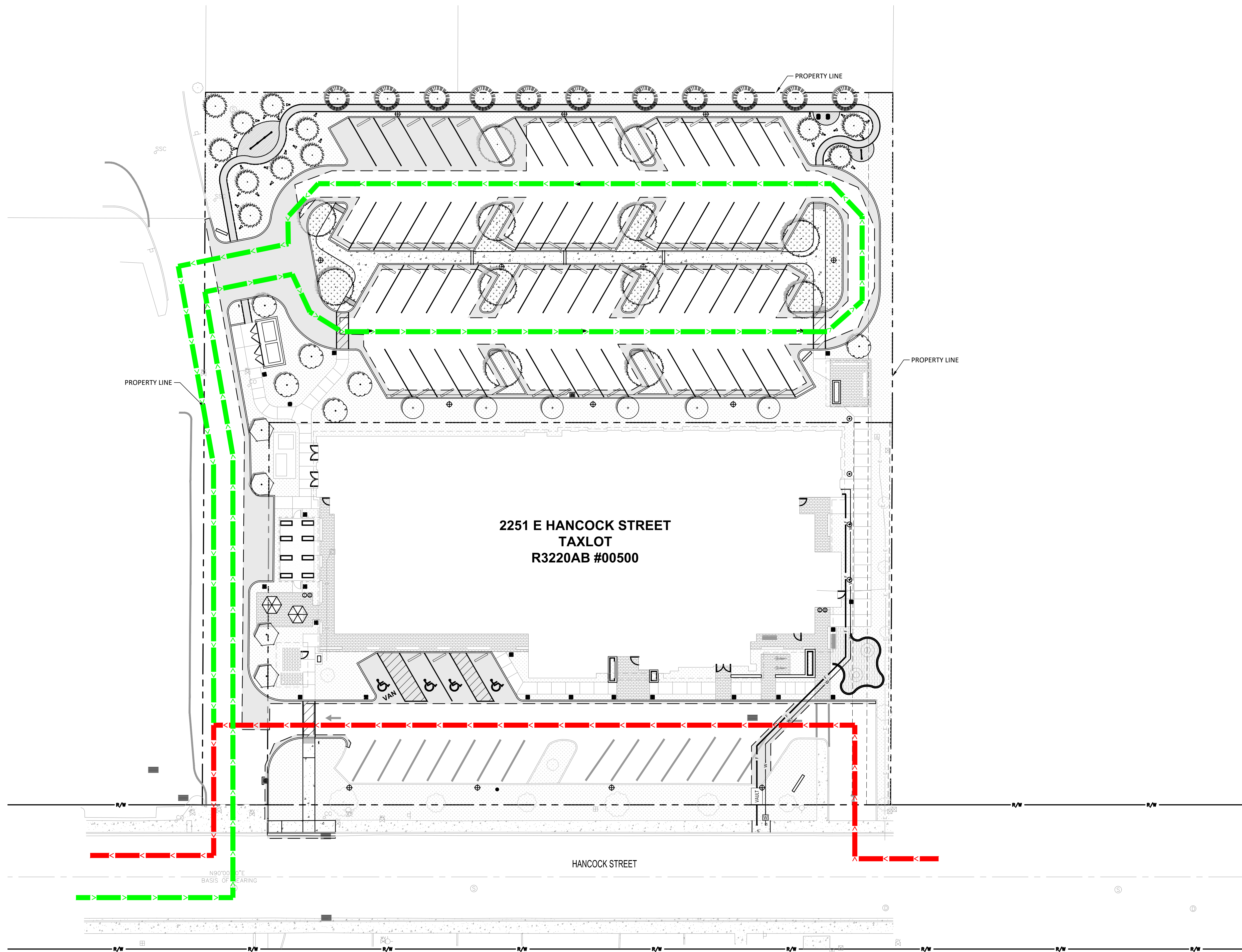
NOT FOR CONSTRUCTION

**VIRGINIA GARCIA CLINIC**  
 Job Number: 21162  
 2251 E. HANCOCK ST.  
 NEWBERG, OR 97132

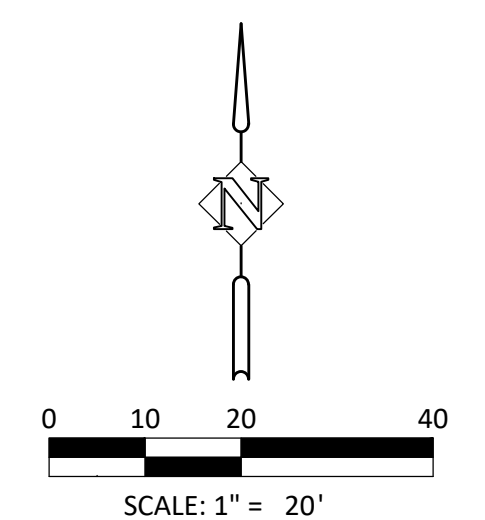


Virginia Garcia Memorial HEALTH CENTER


**Harper Houf Peterson Righellis Inc.**  
ENGINEERS • PLANNERS  
 LANDSCAPE ARCHITECTS • SURVEYORS  
 205 SE Spokane Street, Suite 200, Portland, OR 97202  
 phone: 503.221.1131 www.hhpri.com fax: 503.221.1171



**PLAN VIEW**  
 SCALE: 1" = 20'



DESIGN	09/30/2022
DEVELOPMENT	
ISSUE	DATE

Drawing:  
**TRAFFIC FLOW DIAGRAM**

Sheet No:  
**EX-1**

FILE PATH: C:\Revit\_Locall\21162 VG Newberg Clinic\_R22 JohnsonEWUSG.rvt

THESE DRAWINGS ARE THE ORIGINAL UNPUBLISHED WORK OF THE ARCHITECT AND MAY NOT BE DUPLICATED OR USED WITHOUT THE WRITTEN CONSENT OF THE ARCHITECT.