



# Residential Professional (RP) Lots over 45,000 Sq Ft

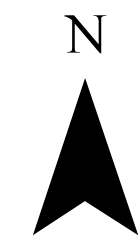
**Legend**

- Newberg City Boundary
- \* Schools
- RP Zone
- RP SP Lots over 45,000
- RP lots over 45,000

1 Acre = 43,560 Sq Ft  
 Total # of Lots over 45,000 Sq Ft: **15,157**  
 Total # of RP Lots over 45,000 Sq Ft: **37**  
 Percentage of RP Lots over 45,000 sq ft versus total lots over 45,000 sq ft: **0.2%**

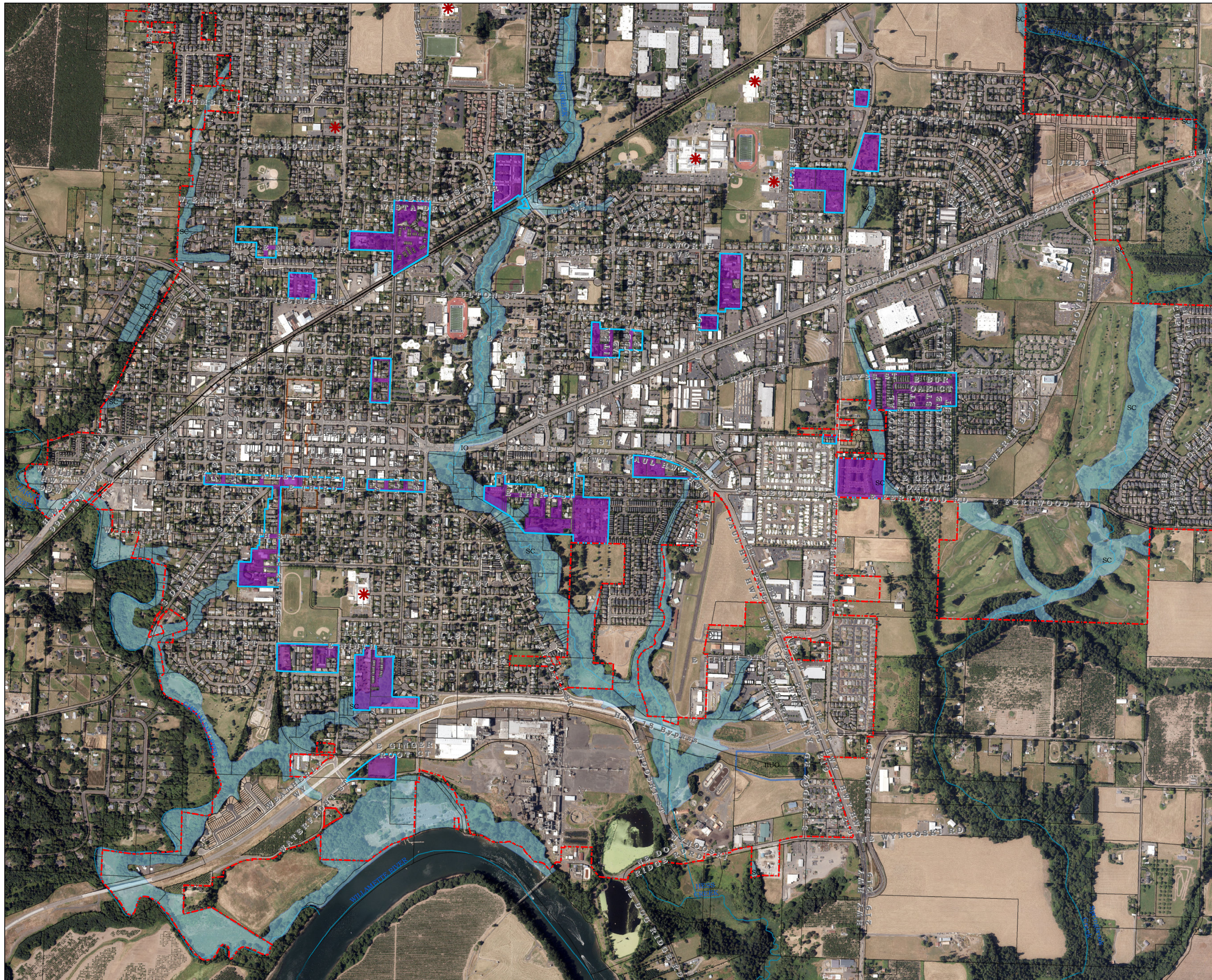
**In the RP Zones:**  
 Minimum lot size for multi-family developments: 3,000 sq ft per dwelling unit  
 Minimum lot size for lots over 15,000 sq ft: 5,000 sq ft per dwelling unit

**Minimum Lot Sizes:**  
**15 unit multi-family development = 45,000 sq ft lot = ~1 acre**  
 (3,000x15 = 45,000)  
**15 unit multi-family development = 75,000 sq ft lot = 1.7 acres**  
 (5,000x15 = 75,000)  
**20 unit multi-family development = 60,000 sq ft lot = 1.4 acres**  
 (3,000x20 = 45,000)  
**20 unit multi-family development = 100,000 sq ft lot = 2.3 acres**





# Residential High Density (R-3) Lots over 30,000 Sq Ft



## Legend

- Newberg City Boundary
- \* Schools
- R3 Zone
- R3 SP Lots over 30,000
- R-3 RD Lots over 30,000
- R-3 lots over 30,000

1 Acre = 43,560 Sq Ft

Total # of Lots over 30,000 Sq Ft: **16,524**  
Total # of R-3 Lots over 30,000 Sq Ft: **94**

Percentage of R-3 Lots over 30,000 sq ft versus total lots over 30,000 sq ft: **0.56%**

### In the R-3 Zones:

Minimum lot size for multi-family developments: 1,500 sq ft per dwelling unit  
Minimum lot size for lots over 15,000 sq ft: 2,500 sq ft per dwelling unit

### Minimum Lot Sizes:

**15 unit multi-family development = 22,500 sq ft lot = 0.5 acres**  
(1,500x15 = 45,000)

**15 unit multi-family development = 37,500 sq ft lot = 0.86 acres**  
(2,500x15 = 75,000)

**20 unit multi-family development = 30,000 sq ft lot = 1.4 acres**  
(1,500x20 = 45,000)

**20 unit multi-family development = 50,000 sq ft lot = 1.1 acres**  
(2,500x20 = 100,000)

2,300 1,150 0 2,300 Feet





# Residential Medium Density (R-2) Lots over 60,000 Sq Ft

## Legend

- Newberg City Boundary
- \* Schools
- R2 Zone
- R-2 lots over 60,000
- R2 RD Lots over 60,000

1 Acre = 43,560 Sq Ft

Total # of Lots over 60,000 Sq Ft: **14,388**  
 Total # of R-2 Lots over 60,000 Sq Ft: **189**

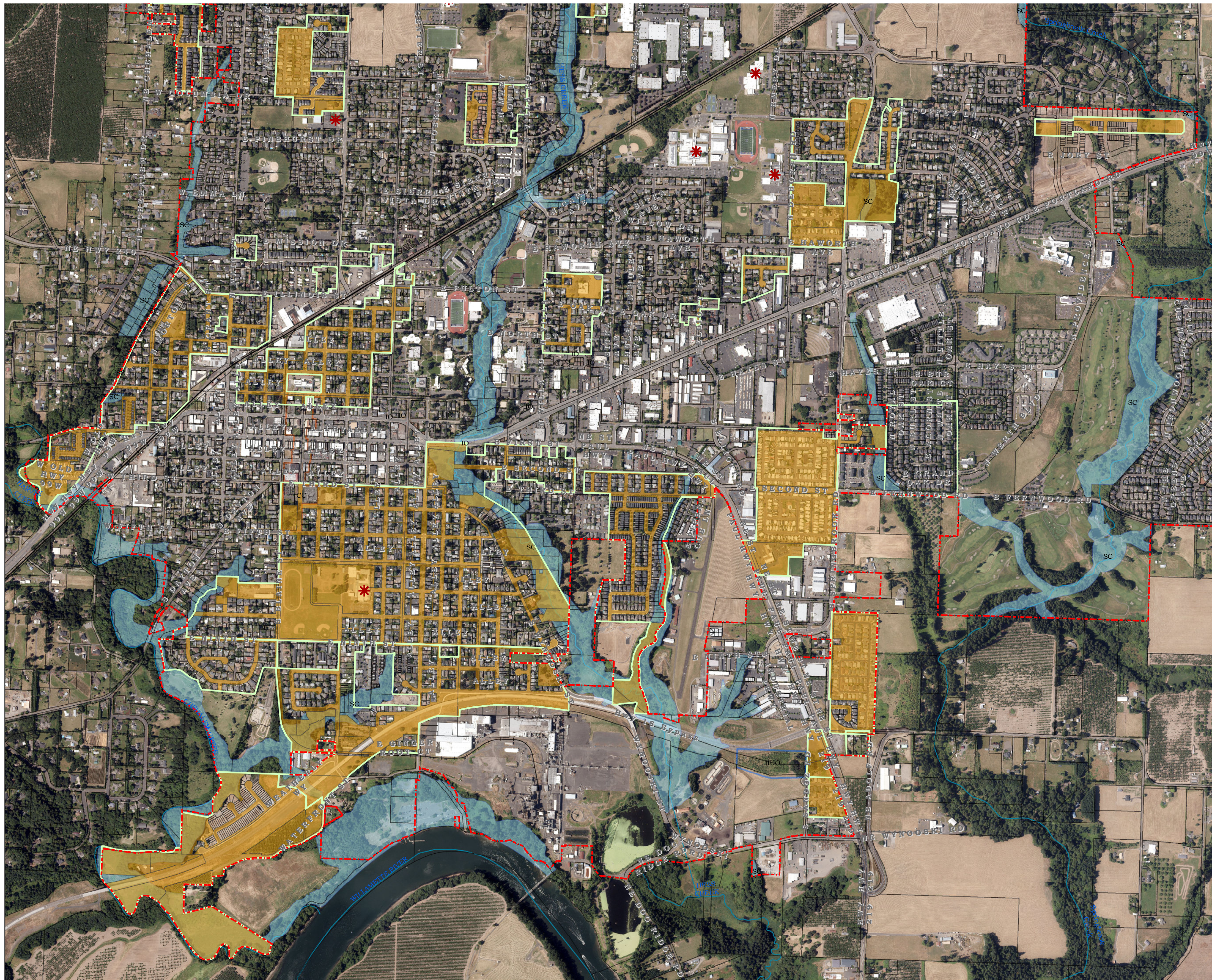
Percentage of R-2 Lots over 60,000 sq ft versus total lots over 60,000 sq ft: **1.3%**

### In the R-2 Zones:

Minimum lot size for multi-family developments: 3,000 sq ft per dwelling unit  
 Minimum lot size for lots over 15,000 sq ft: 5,000 sq ft per dwelling unit

### Minimum Lot Sizes:

- 15 unit multi-family development = 45,000 sq ft lot = ~1 acre**  
(3,000x15 = 45,000)
- 15 unit multi-family development = 75,000 sq ft lot = 1.7 acres**  
(5,000x15 = 75,000)
- 20 unit multi-family development = 60,000 sq ft lot = 1.4 acres**  
(3,000x20 = 45,000)
- 20 unit multi-family development = 100,000 sq ft lot = 2.3 acres**  
(5,000x20 = 100,000)



2,300 1,150 0 2,300 Feet

