

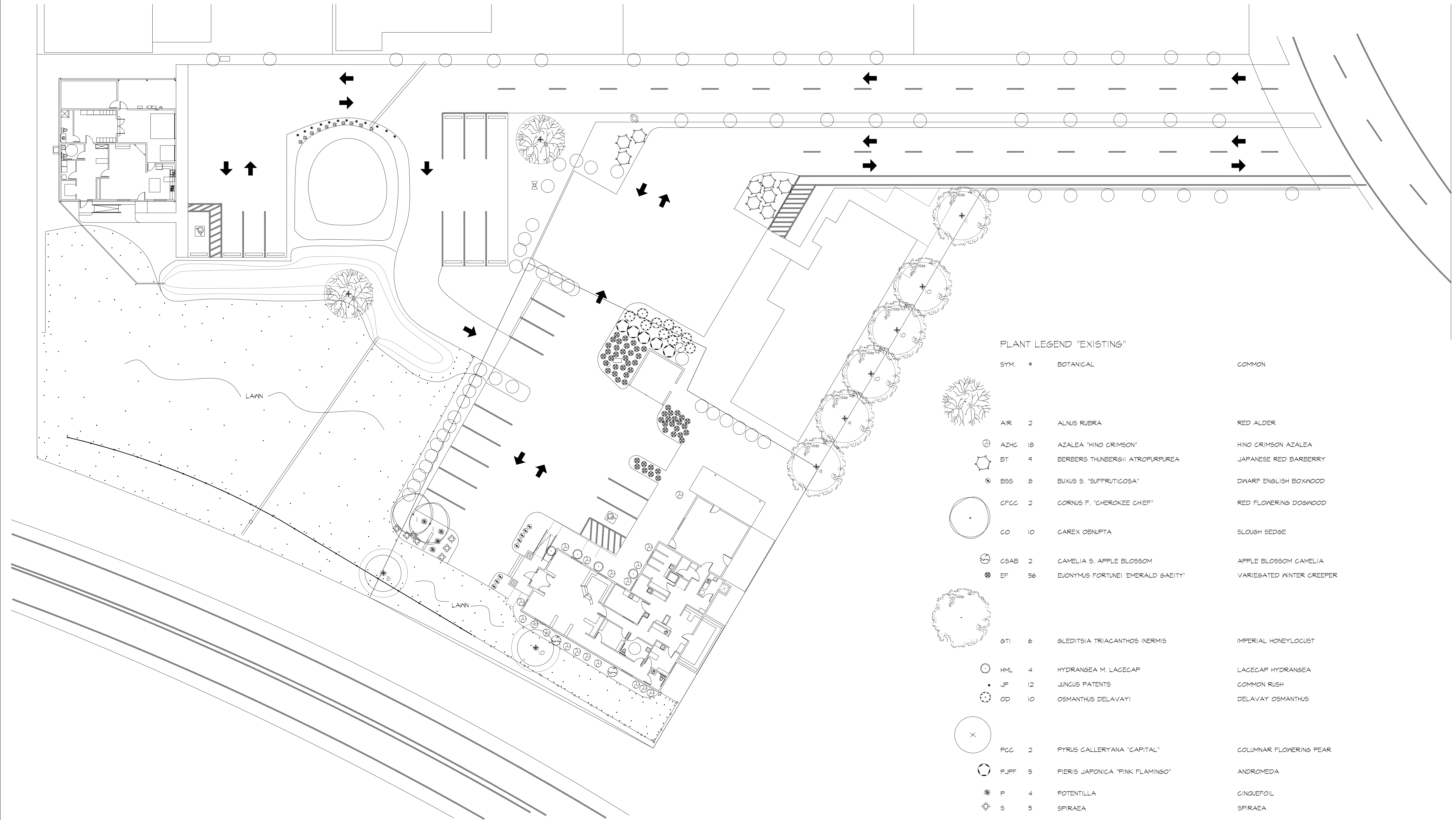


DARRELL MULCH
LANDSCAPE
ARCHITECTURE

1907 N.E. 66TH AVENUE #168
PORTLAND, OREGON 97213
(503) 222-7416 TEL



NEWBERG FAMILY PET CLINIC
131 and 151 N Elliott Road, Newberg, OR

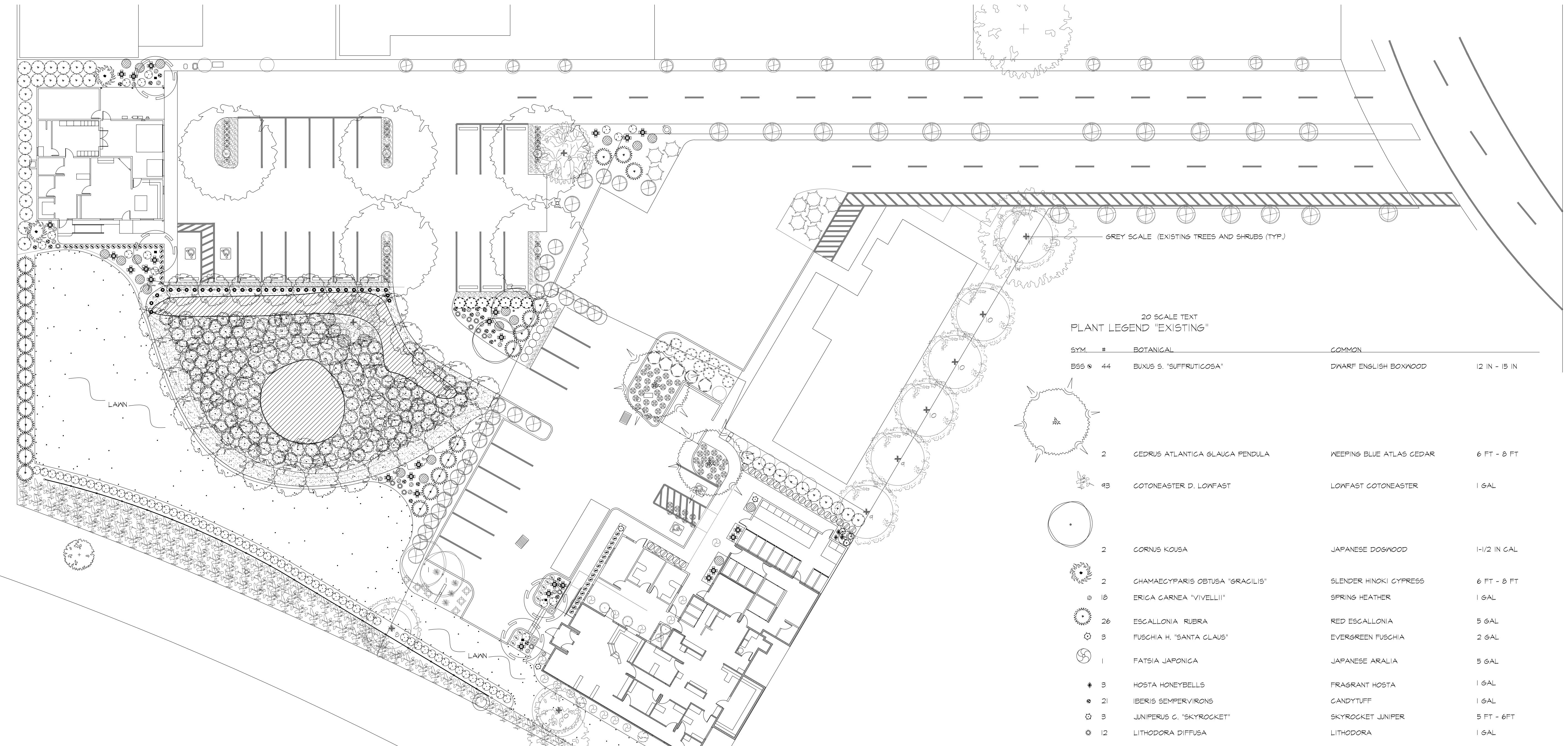


PLANT LEGEND "EXISTING"

SYM.	#	BOTANICAL	COMMON
	2	ALNUS RUBRA	RED ALDER
	18	AZALEA 'HINO CRIMSON'	HINO CRIMSON AZALEA
	4	BERBERIS THUNBERGII ATROPURPUREA	JAPANESE RED BARBERRY
	8	BUXUS S. 'SUFFRUTICOSA'	DWARF ENGLISH BOXWOOD
	2	CORNUS F. 'CHEROKEE CHIEF'	RED FLOWERING DOGWOOD
	10	CAREX OBNUPTA	SLOUGH SEDGE
	2	CAMELIA S. 'APPLE BLOSSOM'	APPLE BLOSSOM CAMELIA
	56	EUONYMUS FORTUNEI 'EMERALD GAETIY'	VARIEGATED WINTER GREENER
	6	GLEDITSIA TRIACANTHOS INERMIS	IMPERIAL HONEYLOCUST
	4	HYDRANGEA M. LACECAP	LACECAP HYDRANGEA
	12	JUNCUS PATENTS	COMMON RUSH
	10	OSMANTHUS DELAVAYI	DELAVAY OSMANTHUS
	2	PYRUS CALLERYANA 'CAPITAL'	COLUMNAR FLOWERING PEAR
	5	PIERIS JAPONICA 'PINK FLAMINGO'	ANDROMEDA
	4	POTENTILLA	CINQUEFOIL
	5	SPIRAEA	SPIRAEA
	80	THUJA O. 'EMERALD GREEN'	EMERALD GREEN ARBORVITAE

NEWBERG FAMILY PET CLINIC
131 and 151 N Elliott Road, Newberg, OR

DATE:	6-15-22
PROJECT NO:	X
DESIGNED:	DM
DRAWN:	DM
CHECKED:	DM
REVISIONS:	



20 SCALE TEXT
PLANT LEGEND "EXISTING"

SYM	#	BOTANICAL	COMMON	SIZE
B55	44	BUXUS S. 'SUFFRUTICOSA'	DWARF ENGLISH BOXWOOD	12 IN - 15 IN
	2	CEDRUS ATLANTICA GLAUGA PENDULA	KEEPING BLUE ATLAS CEDAR	6 FT - 8 FT
	43	COTONEASTER D. LOWFAST	LOWFAST COTONEASTER	1 GAL
	2	CORNUS KOUSA	JAPANESE DOGWOOD	1-1/2 IN GAL
	2	CHAMAECYPARIS OBTUSA 'GRACILIS'	SLENDER HINKI CYPRESS	6 FT - 8 FT
	10	ERICA CARNEA 'VIVELLI'	SPRING HEATHER	1 GAL
	26	ESCALLONIA RUBRA	RED ESCALLONIA	5 GAL
	3	FUSCHIA H. 'SANTA CLAUS'	EVERGREEN FUSCHIA	2 GAL
	1	FATSIA JAPONICA	JAPANESE ARALIA	5 GAL
	3	HOSTA HONEYBELLS	FRAGRANT HOSTA	1 GAL
	21	IBERIS SEMPERVIVENS	CANDYTUFF	1 GAL
	3	JUNIPERUS C. 'SKYROCKET'	SKYROCKET JUNIPER	5 FT - 6FT
	12	LITHODORA DIFFUSA	LITHODORA	1 GAL
	35	LEUCOTHOE FONTANESIANA	DROOPING LEUCOTHOE	1 GAL
	25	NANDINA DOMESTICA 'HARBOUR DWARF'	HARBOUR NANDINA	2 GAL
	7	OSMANTHUS DELAVAYI	DELAVAY OSMANTHUS	2 GAL
	182	RUBUS CALYGINOIDES 'EMERALD CARPET'	EMERALD CARPET	4 IN 24 'O.C.
	76	ROSA MEIDLAND 'SCARLET'	SCARLET MEIDLAND ROSE	2 GAL
	19	RHODODENDRON 'P.J.M.'	P.J.M. RHODY	2 GAL
	21	RHAPHIOLEPIS U. MINOR 'GULF GREEN'	DWARF YEDDO HAWTHORN	2 GAL
	4	STYRAX JAPONICA	JAPANESE SNOWBELL	1-1/2 IN GAL
	24	SARCOCCOCCA RUSCIFOLIA	TALL SARCOCCOCCA	2 GAL
	8	THUJA O. 'EMERALD GREEN'	EMERALD GREEN ARBORVITAE	4 FT - 5 FT
	5	ZELKOVA SERRATA GREEN VASE	GREEN VASE ZELKOVA	2 IN GAL

NEWBERG STORMWATER FACILITY SEE CIVIL, SEWER AND STORMWATER FOR SCALE CROSS SECTION

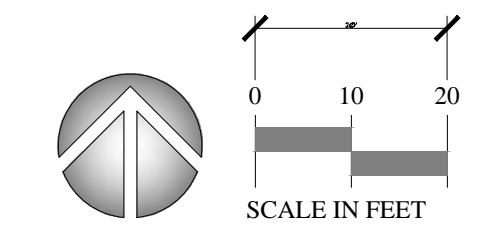
- (NET PONDS) 100 SF
- ZONE G (NET): 115 HERBACEOUS PLANTS
- (SWALES - RAINGARDENS - PLANTERS - DRY PONDS) 100 SF
- ZONE A (MOIST) 115 HERBACEOUS PLANTS, OR 100 HERBACEOUS PLANTS AND 4 SMALL SHRUBS.
- ZONE B (MODERATE TO DRY-ABOVE HIGH WATER MARK) 100 SF
- TO GROUNDCOVER PLANTS, 4 SMALL SHRUBS, 3 LARGE SHRUBS, 1 TREE

SYM	#	BOTANICAL	COMMON	SIZE	ZONE
	2034	780x493=17.73 SF x 115 = 2034 JUNCUS PATENS 12" O.C.	NATIVE SPREADING SEDGE	1 GAL	A HERBACEOUS
	3668	52.42 SF x 70 = 3668 ARCHTOSTAPHYLOS UVAURSI-12IN-O.C.	NATIVE KINIKINNICK	1 GAL	B GROUNDCOVER
	216	CORNUS STOLONIFERA 'KELSEYI'	KELSEYI REDTWIN DOGWOOD	1 GAL	B SMALL SHRUB
	151	RIBES SANGUINUM	NATIVE CURRANT	3 GAL	B LARGE SHRUB
	52	ACER GIRCINATUM	NATIVE VINE MAPLE	1-1/2 IN GAL	A/B DECIDUOUS TREE

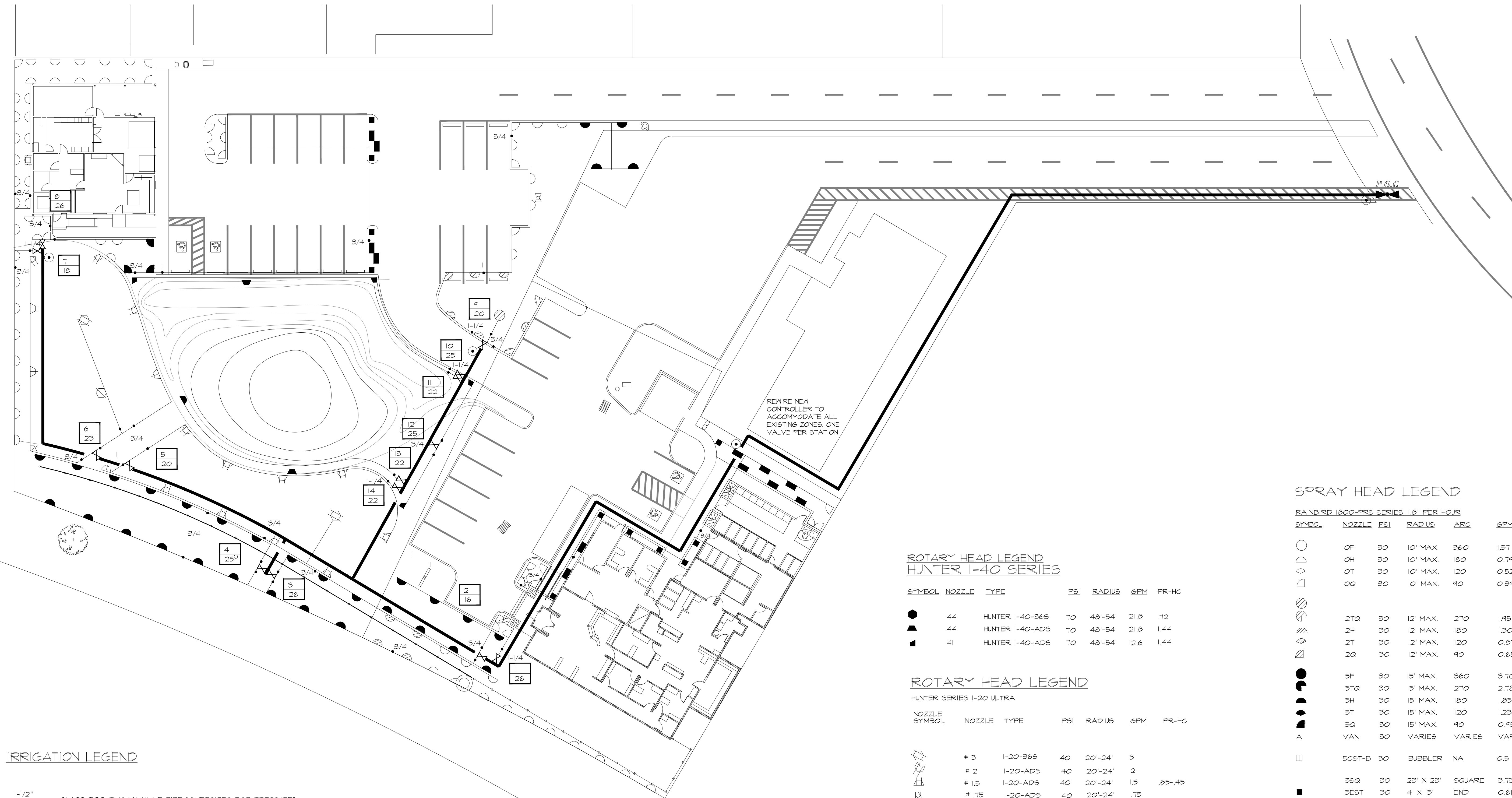
NOTE:
PLANTINGS SHALL BE INSTALLED BETWEEN OCTOBER 1 AND MARCH 31
PRIOR TO INSTALLING REQUIRED MITIGATION PLANTINGS, NON-NATIVE INVASIVE PLANTS SHALL BE REMOVED FROM ALL AREAS WITHIN TEN FEET OF MITIGATION PLANTINGS, USING HAND HELD EQUIPMENT.
ALL MITIGATION AND REMEDIATION SHRUBS AND TREES SHALL BE MARKED IN THE FIELD BY A TAG AND ATTACHED TO THE TOP OF THE PLANT FOR EASY IDENTIFICATION BY THE CITY INSPECTOR. ALL TAPE SHALL BE CONTRASTING IN COLOR THAT IS EASILY SEEN AND IDENTIFIED.

MONITORING
REMOVE BY HAND TOOLS ALL EXOTIC SPECIES.
I.D. TAGS TO BE PLACED ON ALL PLANTS FOR MONITORING PURPOSES.
TREES, SHRUBS, AND GROUNDCOVERS PLANTED IN UPLAND AREAS SHALL BE MULCHED A MINIMUM OF THREE INCHES IN DEPTH AND 10 INCHES IN DIAMETER MAINTENANCE
NEWBERG FAMILY PET CLINIC
131 and 151 N Elliott Road, Newberg, OR

- SHALL MONITOR THE REQUIRED PLANTINGS FOR TWO YEARS TO ENSURE SURVIVAL AND REPLACEMENT AS DESCRIBED AS FOLLOWS: THE LANDOWNER IS RESPONSIBLE FOR THE ONGOING SURVIVAL OF REQUIRED PLANTINGS AND IS RESPONSIBLE FOR SUPPLYING AND REPLACING ANY DEAD PLANTS.
- CONDUCT ANNUAL PLANT INSPECTION DURING THE EARLY SUMMER GROWING SEASON.
- A COUNT OF THE NUMBER OF PLANTS THAT HAVE DIED. ONE REPLACEMENT PLANT MUST BE PLANTED FOR EACH PLANT THAT HAS DIED (REPLACEMENT MUST OCCUR WITHIN ONE PLANTING SEASON).
- A LIST OF REPLACEMENT PLANTS
- PROVIDE THREE LETTERS (TO SERVE AS MONITORING AND MAINTENANCE REPORTS) TO CLEAN WATER SERVICES CONTAINING THE ABOVE MONITORING INFORMATION. SUBMIT THE FIRST LETTER TO VERIFY THE SITE HAS BEEN PLANTED, SUBMIT THE SECOND LETTER WITHIN 12 TO 14 MONTHS AFTER INITIAL PLANTING AND THE THIRD LETTER 24 TO 27 MONTHS AFTER INITIAL PLANTING.



NEWBERG FAMILY PET CLINIC
 131 and 151 N Elliott Road, Newberg, OR



IRRIGATION LEGEND

-
-
-
-
-
-
-
-
-
-

SYSTEM BASED ON 3/4\"/>

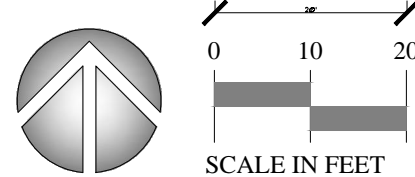
PIPE SIZING

THIS PLAN IS SCHEMATIC, THERE ARE SHORT SECTIONS OF PIPE THAT MAY NOT APPEAR ON THE PLAN THAT WILL 'MANIFOLD' FROM EACH VALVE.
 PIPE SHALL BE SIZED ACCORDING TO MANUFACTURERS RECOMMENDATIONS OR AS SPECIFIED ON PLAN.
 FLOW NOT TO EXCEED 5' PER SECOND.

PIPE SIZE / CLASS 200	GPM	P.S.I./LOSS
3/4 3/4\"/>		

CUT AND CAP IRRIGATION COMPONENTS THAT WILL BE AFFECTED BY CONSTRUCTION PRIOR TO DEMOLITION. FLUMB EXISTING ZONES AFFECTED BY DEMOLITION TO REESTABLISH FULL FUNCTION. INCLUDE ALL REQUIRED COMPONENTS AND ADD, ADJUST, OR REZONE HEADS TO ATTAIN PREVIOUS COVERAGE.

THIS PLAN IS SCHEMATIC, DO NOT BEND MAINLINE PIPE. USE 45\"/>



ROTARY HEAD LEGEND HUNTER I-40 SERIES

SYMBOL	NOZZLE	TYPE	PSI	RADIUS	GPM	FR-HC
	44	HUNTER I-40-36S	70	48'-54'	21.8	.72
	44	HUNTER I-40-ADS	70	48'-54'	21.8	1.44
	41	HUNTER I-40-ADS	70	48'-54'	12.6	1.44

ROTARY HEAD LEGEND HUNTER SERIES I-20 ULTRA

NOZZLE SYMBOL	NOZZLE	TYPE	PSI	RADIUS	GPM	FR-HC
	# 3	I-20-36S	40	20'-24'	3	
	# 2	I-20-ADS	40	20'-24'	2	
	# 1.5	I-20-ADS	40	20'-24'	1.5	.65-.45
	# .75	I-20-ADS	40	20'-24'	.75	
	# 6	I-20-36S	40	25'-29'	6	
	# 4	I-20-ADS	40	25'-29'	4	
	# 3	I-20-ADS	40	25'-29'	3	55-.42
	# 1.5	I-20-ADS	40	25'-29'	1.5	
	# 6	I-20-36S	40	30'-33'	6	
	# 6	I-20-ADS	40	30'-33'	6	
	# 4	I-20-ADS	40	30'-33'	4	52-.43
	# 2	I-20-ADS	40	30'-33'	2	
	# 6	I-20-ADS	40	34'-38'	6	61-.49
	# 3	I-20-ADS	40	34'-38'	3	

- NOTES**
- RADIII ARE LISTED FOR INFORMATION ONLY. SPACE HEADS AS SHOWN ON DRAWINGS.
 - INSTALL (6\"/>

SPRAY HEAD LEGEND

RAINBIRD 1800-PRS. SERIES 1.8\"/>					
	10F	30	10' MAX.	360	1.57
	10H	30	10' MAX.	180	0.79
	10T	30	10' MAX.	120	0.52
	10Q	30	10' MAX.	90	0.39
	12TQ	30	12' MAX.	270	1.95
	12H	30	12' MAX.	180	1.30
	12T	30	12' MAX.	120	0.87
	12Q	30	12' MAX.	90	0.65
	15F	30	15' MAX.	360	3.70
	15TQ	30	15' MAX.	270	2.78
	15H	30	15' MAX.	180	1.85
	15T	30	15' MAX.	120	1.23
	15Q	30	15' MAX.	90	0.93
	VAN	30	VARIES	VARIES	VARIES
	5CST-B	30	BUBBLER	NA	0.5
	155Q	30	28' X 28' SQUARE		3.73
	15E3T	30	4' X 15' END		0.61
	15C5T	30	4' X 30' CENTER		1.21
	1555T	30	4' X 30' SIDE		1.21
	1755T	30	4' X 18' SIDE		1.73
	14Q2	30	BUBBLER	360	0.5
	5F	30	5' MAX.	360	.41
	5H	30	5' MAX.	180	0.2
	5T	30	5' MAX.	120	0.13
	5Q	30	5' MAX.	90	0.1

HEAD RISER SCHEDULE

AREA	SPRAY HEADS
LAVNS	4\"/>

IRRIGATION HEAD NOTES

- USE SIDE INLETS ON 6\"/>

ATTENTION: Oregon law requires you to follow rules adopted by the Oregon Utility Notification Center. Those rules are set forth in OAR 952-001-0010 through OAR 952-001-0090. You may obtain copies of the rules by calling the center. (Note: the telephone number for the Oregon Utility Notification Center is (503) 232-1987).