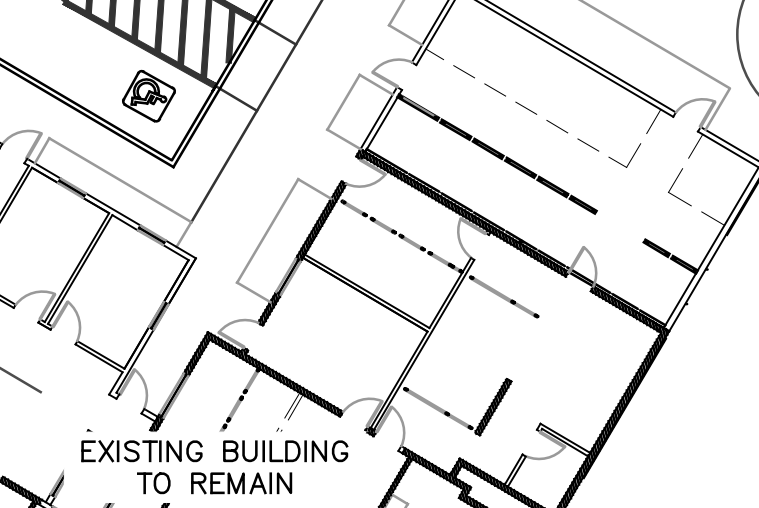
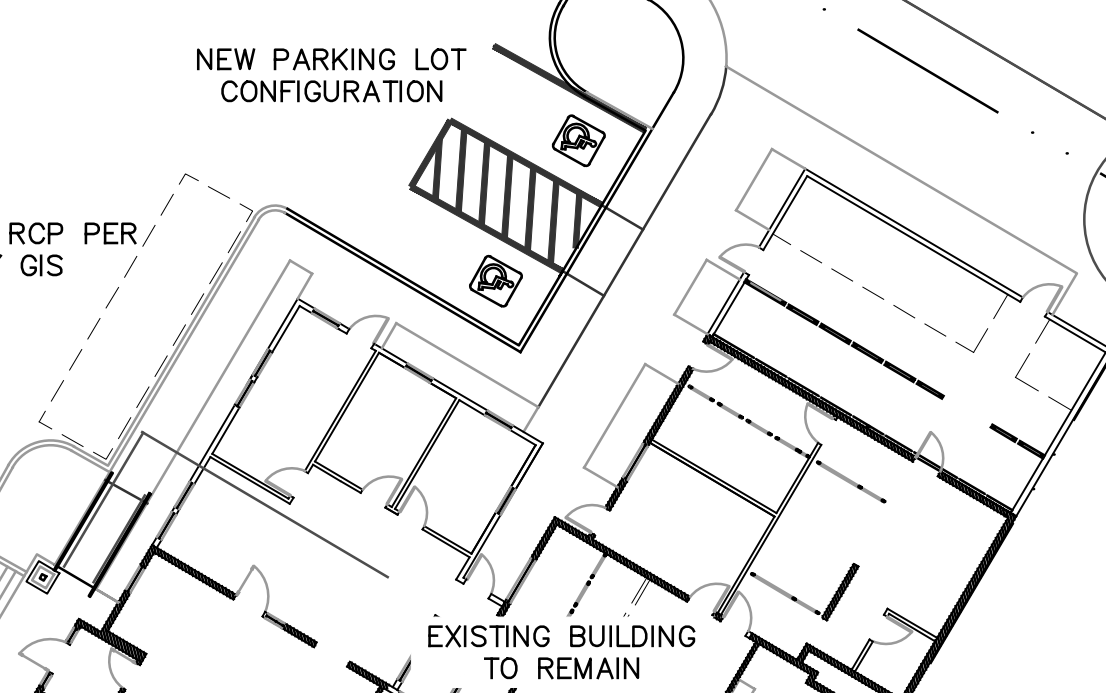
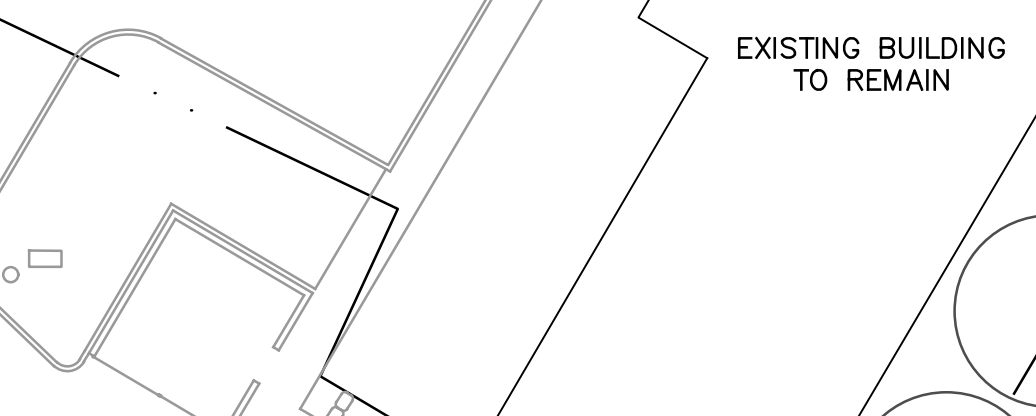
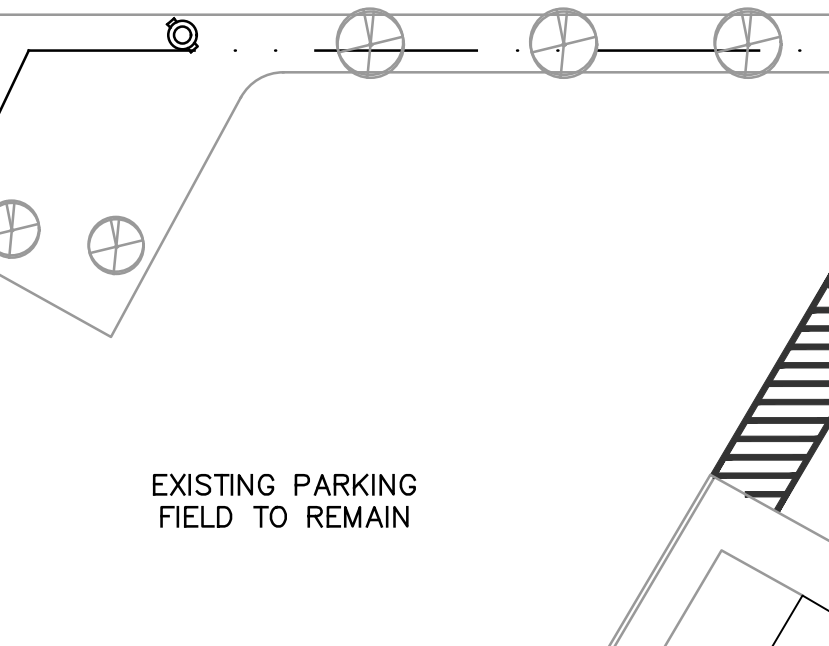
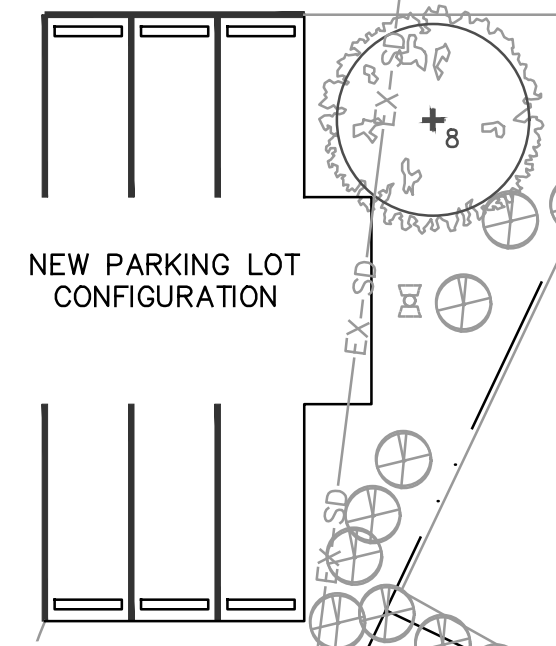
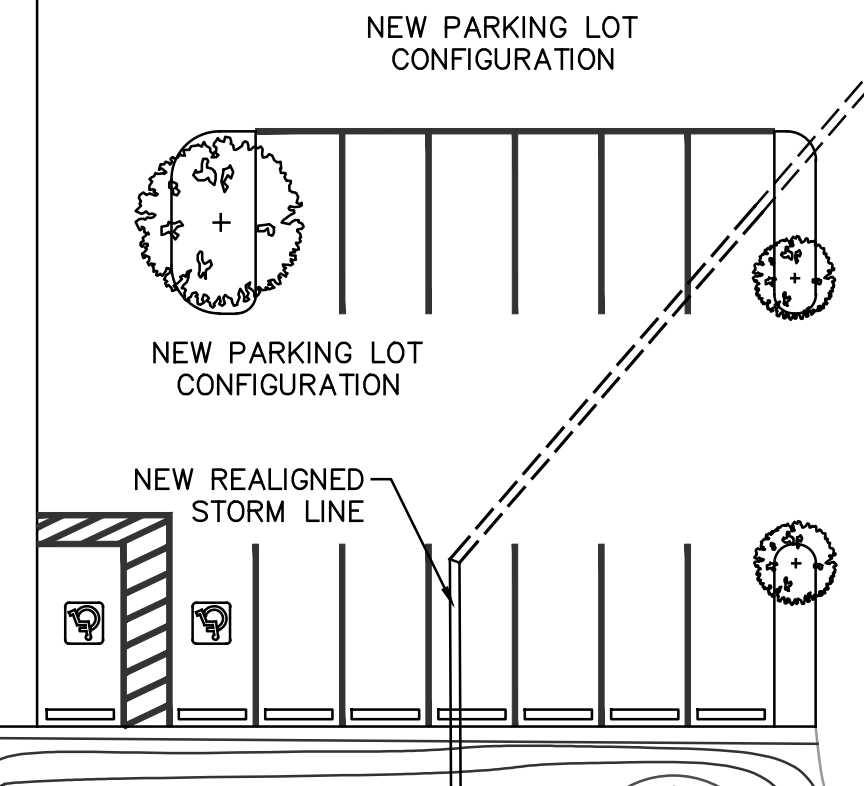
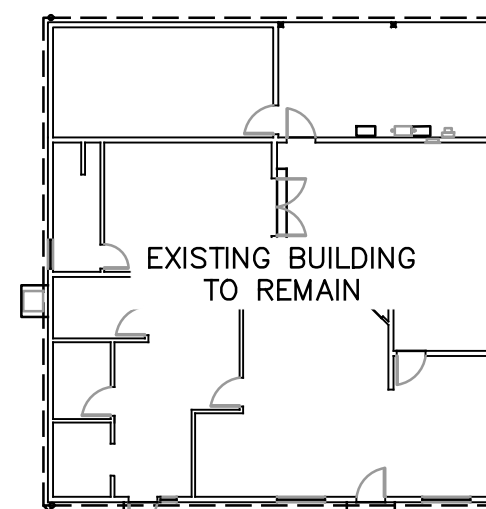
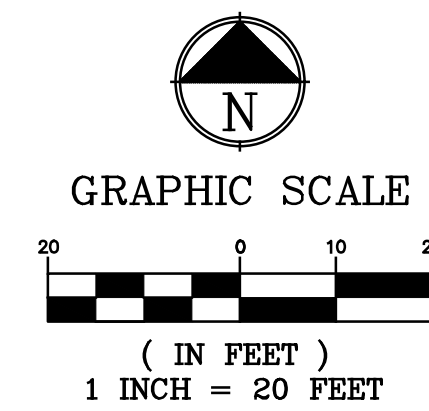


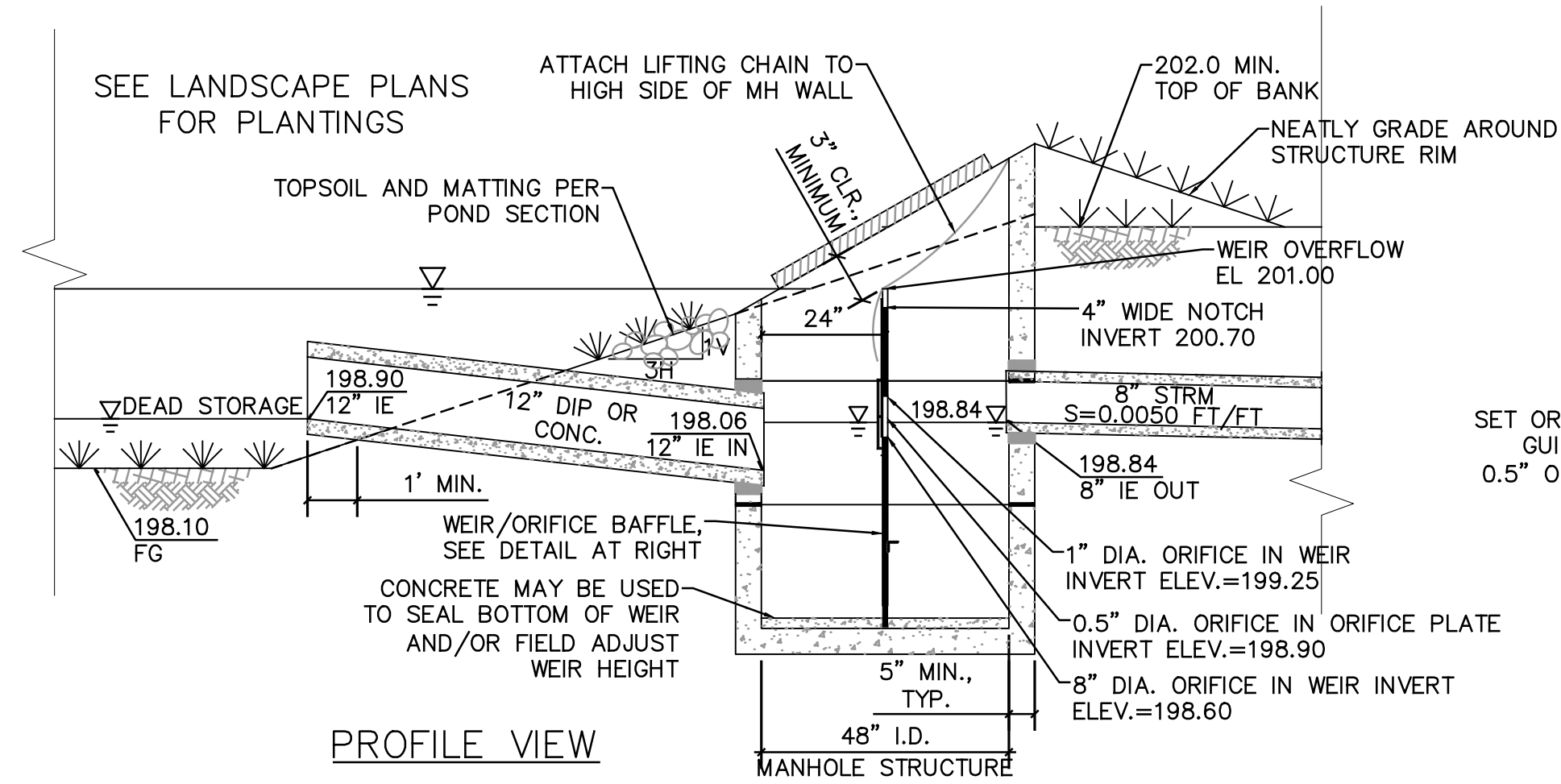
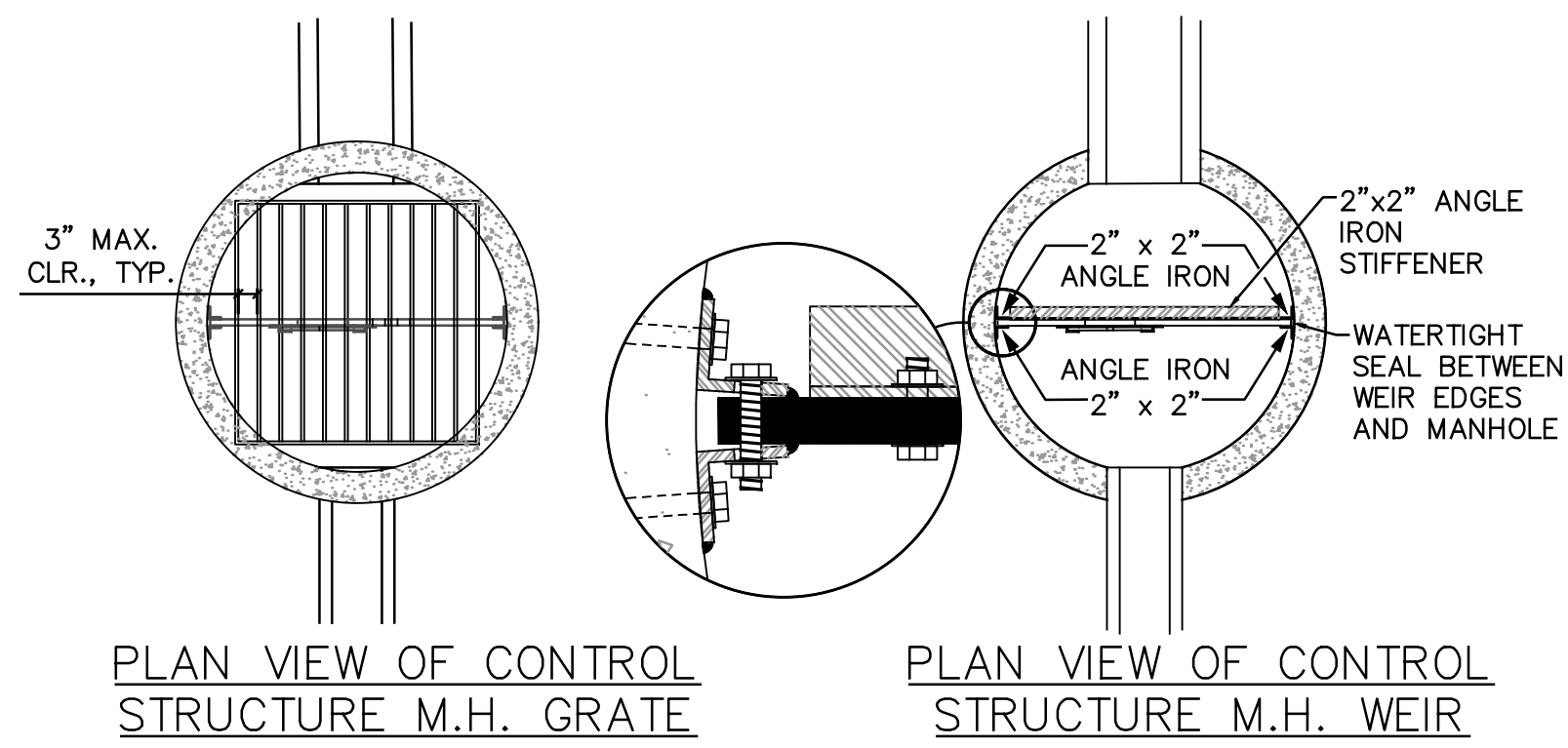
STORMWATER GENERAL NOTES:

1. IN AREAS WHERE COVER OVER STORMWATER LINES ARE BETWEEN 24" TO 36", LINES SHALL BE COMPIRSED OF DUCTILE IRON, CLASS-51 CEMENT-LINED PIPE (DI CL-51), OR APPROVED EQUAL.
2. PRIOR TO CONSTRUCTION, CONTRACTOR SHALL TEST SOIL BELOW INFILTRATION SYSTEM FACILITY TO ENSURE SOIL SATISFIES CRITERIA FOR WATER QUALITY.
3. REFER TO LANDSCAPE PLANS FOR PLANTINGS WITHIN STORMWATER FACILITIES.

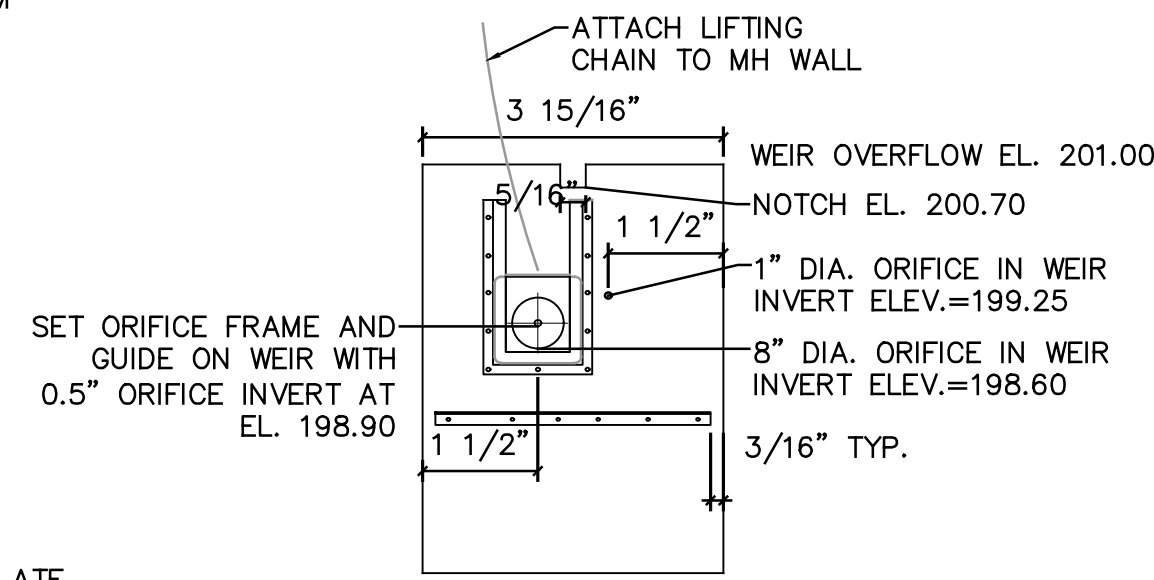


FAMILY PET CLINIC - ADDITIONS
LAND-USE APPLICATIONS
 NEWBERG, OREGON 97132
STORMWATER PLAN

Revisions:	
Date:	Issued For:
Date:	APRIL 21, 2022
Issued For:	CoN LU APPLICATION
Job No:	22032-0016



CONTROL MANHOLE
SCALE: N.T.S.



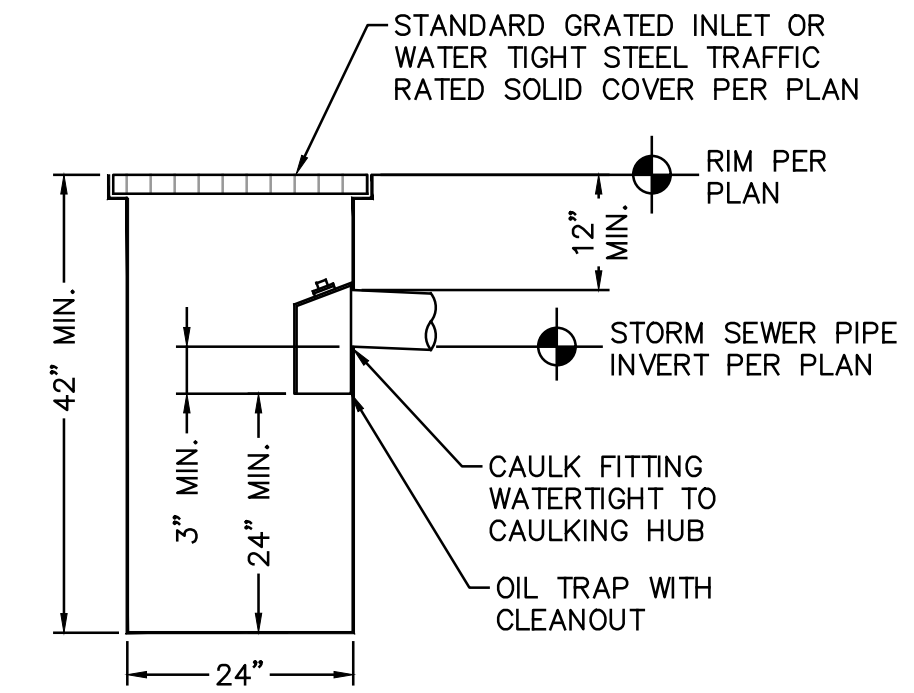
WEIR DETAIL

4
C3.0

WEIR SHALL BE 1" SOLID WALL HDPE. ANCHOR WEIR TO STAINLESS STEEL (SS) 2" x 2" ANGLE IRON EVERY 12" MAXIMUM WITH SS HARDWARE (BOTH SIDES). CREATE WATER TIGHT SEAL ALONG ALL EDGES AFTER INSTALLATION.

SEE ORIFICE PLATE AND GUIDE DETAIL.

INSTALL AN SS ANGLE IRON STIFFENER ON BACK OF WEIR (3"-7"), CENTERED AND ANCHORED TO WEIR, WITH SS HARDWARE AT 6 POINTS. SPACE OR COUNTERSINK HARDWARE TO NOT INTERFERE WITH ORIFICE PLATE EXTRACTION.

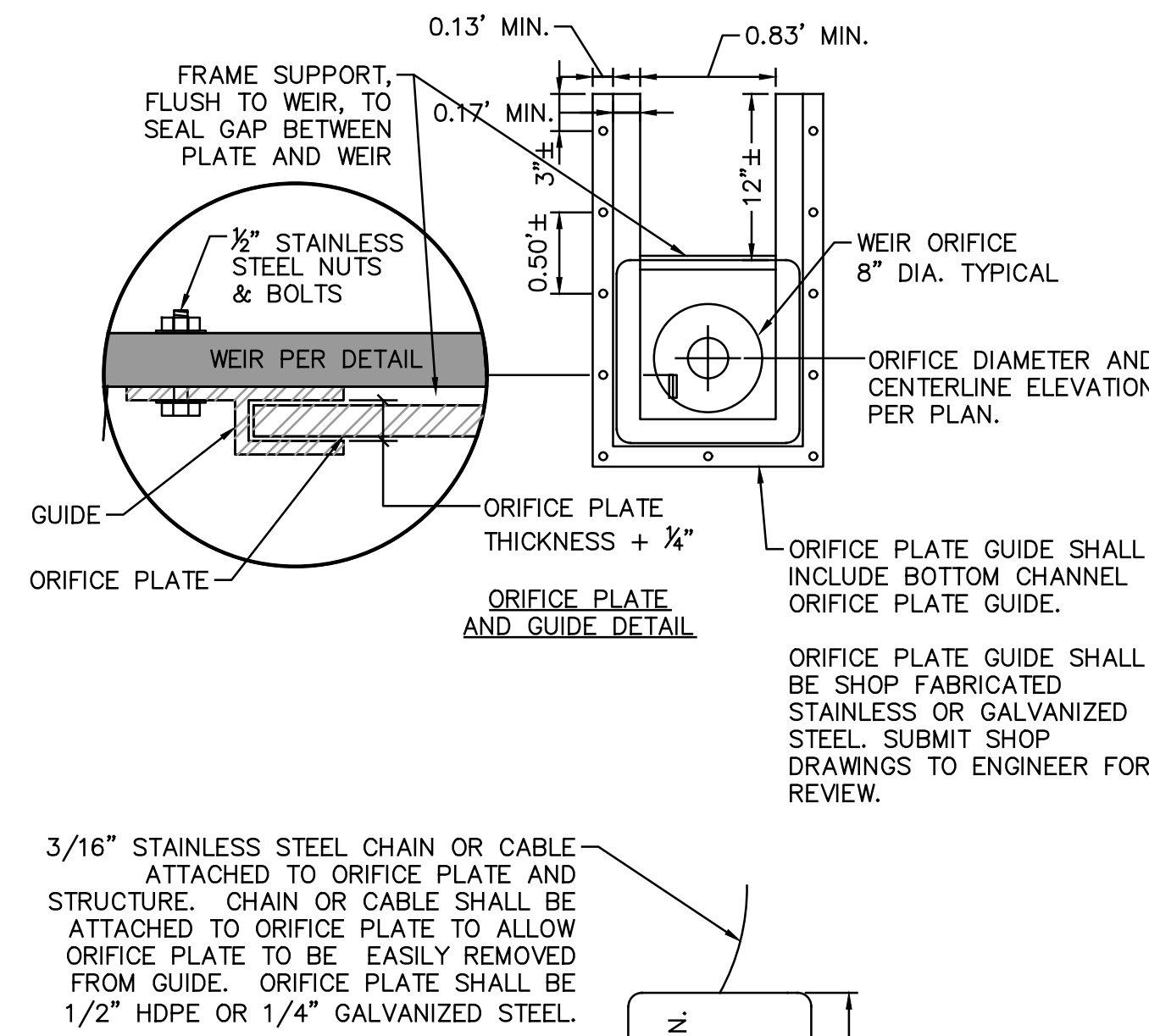


NOTES

- CATCH BASIN TO BE CONSTRUCTED OF 10 GAUGE (MINIMUM) STEEL WITH ALL JOINTS WELDED.
- STEEL OIL TRAP CLEANOUT TO BE PLUGGED OR HINGED ACCESS.
- CAULK PIPE TO CAULKING HUB.
- SET CATCH BASIN ON 6" THICK COMPACTED CRUSHED ROCK BASE.
- BACKFILL AROUND CATCH BASIN WITH COMPACTED CRUSHED ROCK.

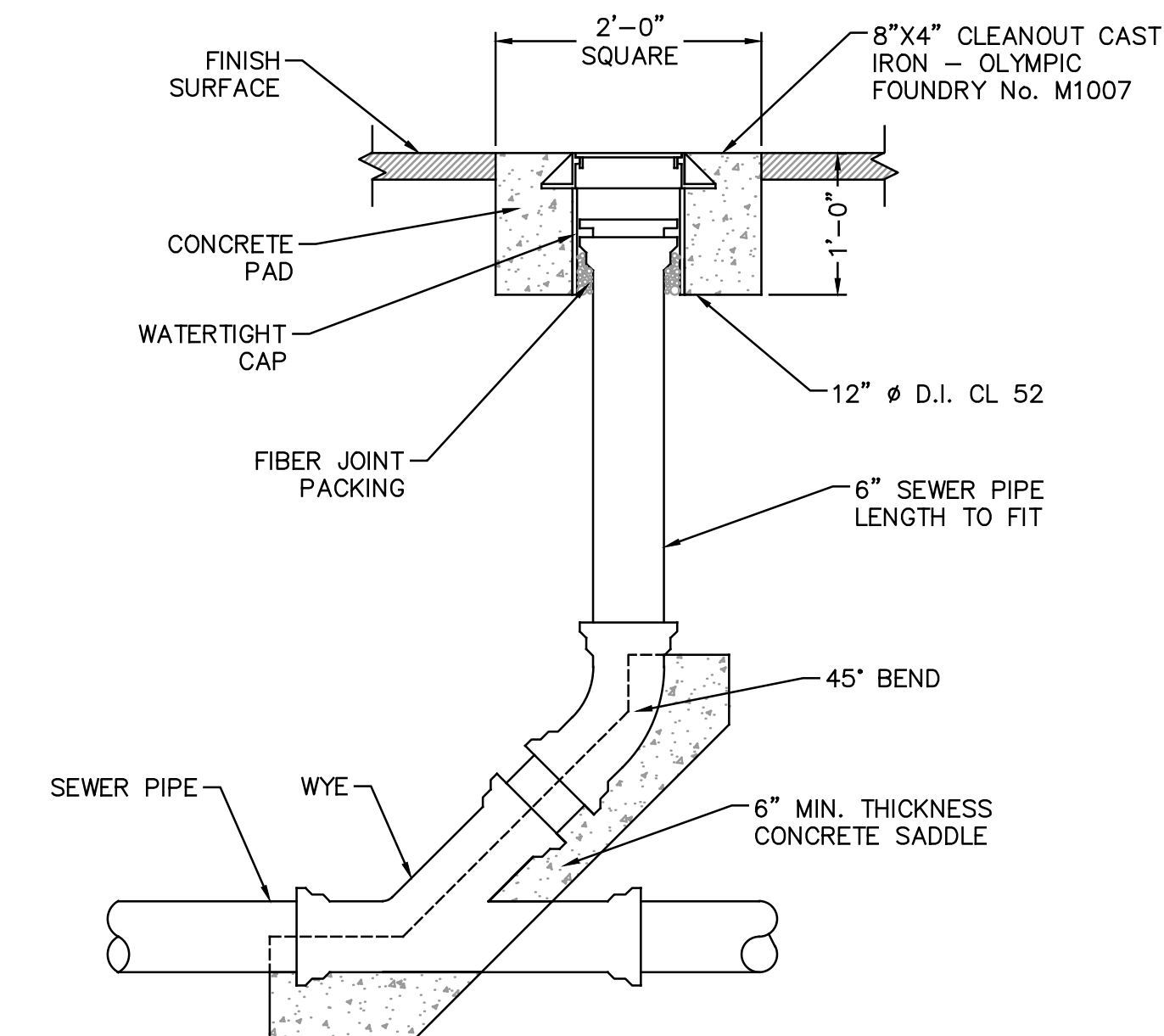
CATCH BASIN
SCALE: N.T.S.

1
C3.0



CONTROL MANHOLE - ORIFICE PLATE DETAIL
SCALE: N.T.S.

3
C3.0



CLEANOUT
SCALE: N.T.S.

2
C3.0

