

- PRE-CONSTRUCTION, CLEANING, AND DEMOLITION NOTES.**
1. ALL BASE EXISTING (INLET PROTECTION, FENCE/SILT PROTECTION CONTROL, DRAINAGE CONSTRUCTION ENTRANCES, ETC.) MUST BE IN PLACE PRIOR TO ANY DEMOLITION AND APPROVED IN AN ARIAL INSPECTION UNDER THE SUPERVISION OF THE DISTURBANCE CONTROL OFFICER.
 2. SENSITIVE AREAS OF THE SITE SHALL BE IDENTIFIED PRIOR TO CONSTRUCTION AND PROTECTED BY CONSTRUCTION ENTRANCES, FENCE/SILT PROTECTION, AND OTHER MEASURES AS APPROVED BY THE DISTURBANCE CONTROL OFFICER.
 3. SENSITIVE AREAS SHALL BE IDENTIFIED PRIOR TO CONSTRUCTION AND PROTECTED BY CONSTRUCTION ENTRANCES, FENCE/SILT PROTECTION, AND OTHER MEASURES AS APPROVED BY THE DISTURBANCE CONTROL OFFICER.
 4. CONSTRUCTION ENTRANCES SHALL BE INSTALLED AT THE BEGINNING OF CONSTRUCTION AND NOT REMOVED UNTIL THE CONSTRUCTION IS COMPLETE. CONSTRUCTION ENTRANCES SHALL BE MAINTAINED THROUGHOUT CONSTRUCTION AND NOT REMOVED UNTIL THE CONSTRUCTION IS COMPLETE.
 5. ALL DEMOLITION AND CONSTRUCTION SHALL BE IN ACCORDANCE WITH THE DISTURBANCE CONTROL PLAN AND THE DISTURBANCE CONTROL OFFICER'S REQUIREMENTS.
 6. DISTURBANCE CONTROL PLAN SHALL BE MAINTAINED THROUGHOUT CONSTRUCTION AND NOT REMOVED UNTIL THE CONSTRUCTION IS COMPLETE.
 7. CONSTRUCTION ENTRANCES SHALL BE MAINTAINED THROUGHOUT CONSTRUCTION AND NOT REMOVED UNTIL THE CONSTRUCTION IS COMPLETE.
 8. CONSTRUCTION ENTRANCES SHALL BE MAINTAINED THROUGHOUT CONSTRUCTION AND NOT REMOVED UNTIL THE CONSTRUCTION IS COMPLETE.
 9. CONSTRUCTION ENTRANCES SHALL BE MAINTAINED THROUGHOUT CONSTRUCTION AND NOT REMOVED UNTIL THE CONSTRUCTION IS COMPLETE.
 10. CONSTRUCTION ENTRANCES SHALL BE MAINTAINED THROUGHOUT CONSTRUCTION AND NOT REMOVED UNTIL THE CONSTRUCTION IS COMPLETE.

EROSION CONTROL NOTES

1. INSTALL FENCE/SILT PROTECTION CONTROL FENCE.
2. INSTALL CONSTRUCTION ENTRANCE.
3. FENCE/SILT PROTECTION CONTROL FENCE.
4. CONSTRUCTION AREA (TYP.).
5. CONSTRUCTION AREA (TYP.).
6. CONSTRUCTION AREA (TYP.).
7. CONSTRUCTION AREA (TYP.).
8. CONSTRUCTION AREA (TYP.).
9. CONSTRUCTION AREA (TYP.).
10. CONSTRUCTION AREA (TYP.).

PRELIMINARY DEMOLITION, EROSION, & SEDIMENT CONTROL PLAN

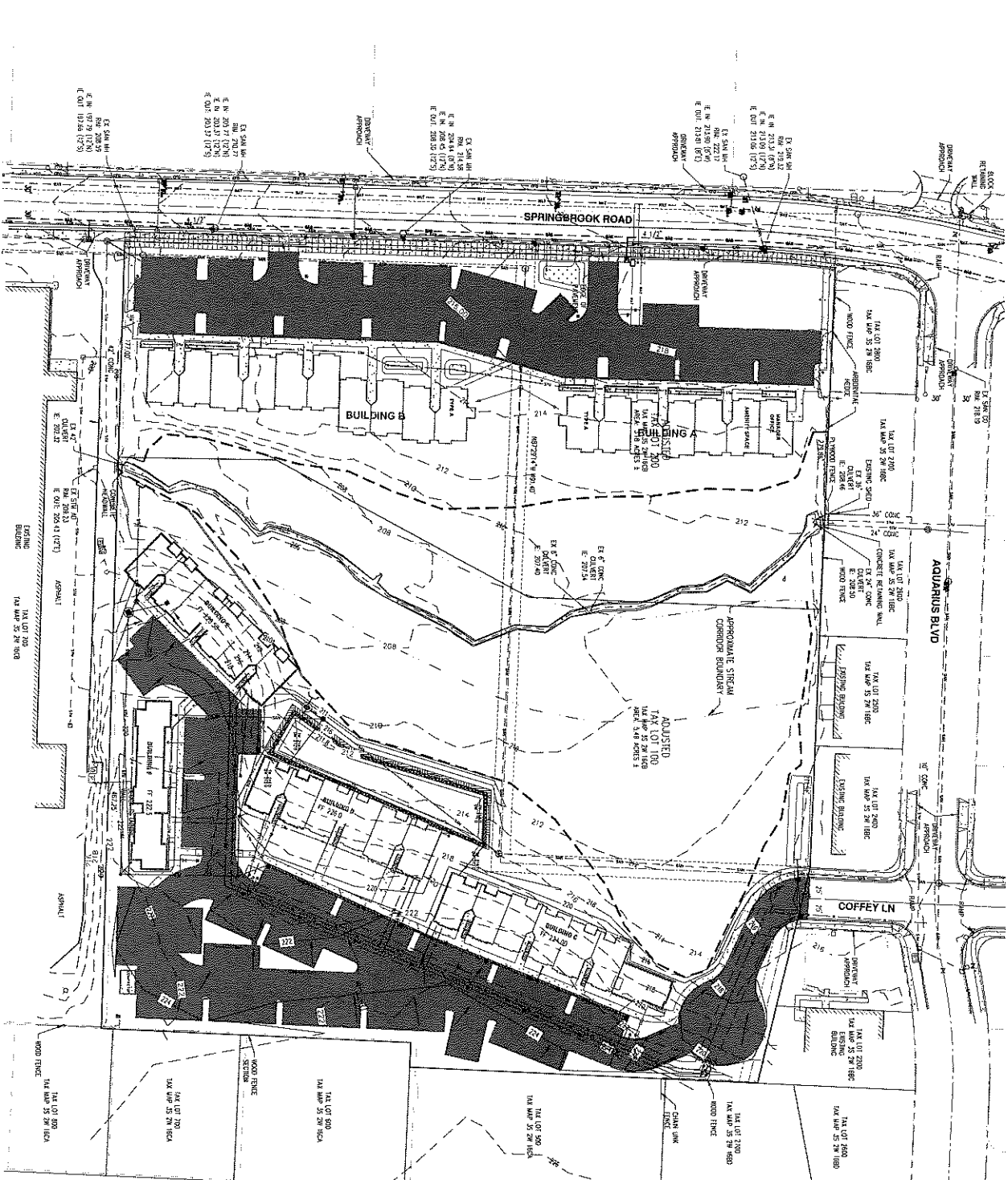
MEADOW BROOK VILLAS (PHASE 2)

THE CITY OF NEWBERG

1" = 40'

0 10' 20' 40' 80'

Scale in Feet

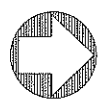


PRELIMINARY GRADING PLAN

1" = 40'

0 10 20 40 80'

Scale in Feet



LEGEND	
ASPHALT CONCRETE	AC(10.00)
TOP OF CURB	TC(10.00)
PAV. LIFTING	PL(10.00)
FINISHED FLOOR ELEVATION	FF(10.00)
FINISHED GRADE	FG(10.00)
EXISTING GRADE	EG(10.00)

DESIGNED BY	MC
CHECKED BY	MC
DATE	02/11/2020
SCALE	AS SHOWN
PROJECT NO.	19-122.03
SHEET	C6

MEADOW BROOK VILLAS (PHASE 2)

THE CITY OF NEWBURG

PRELIMINARY GRADING PLAN

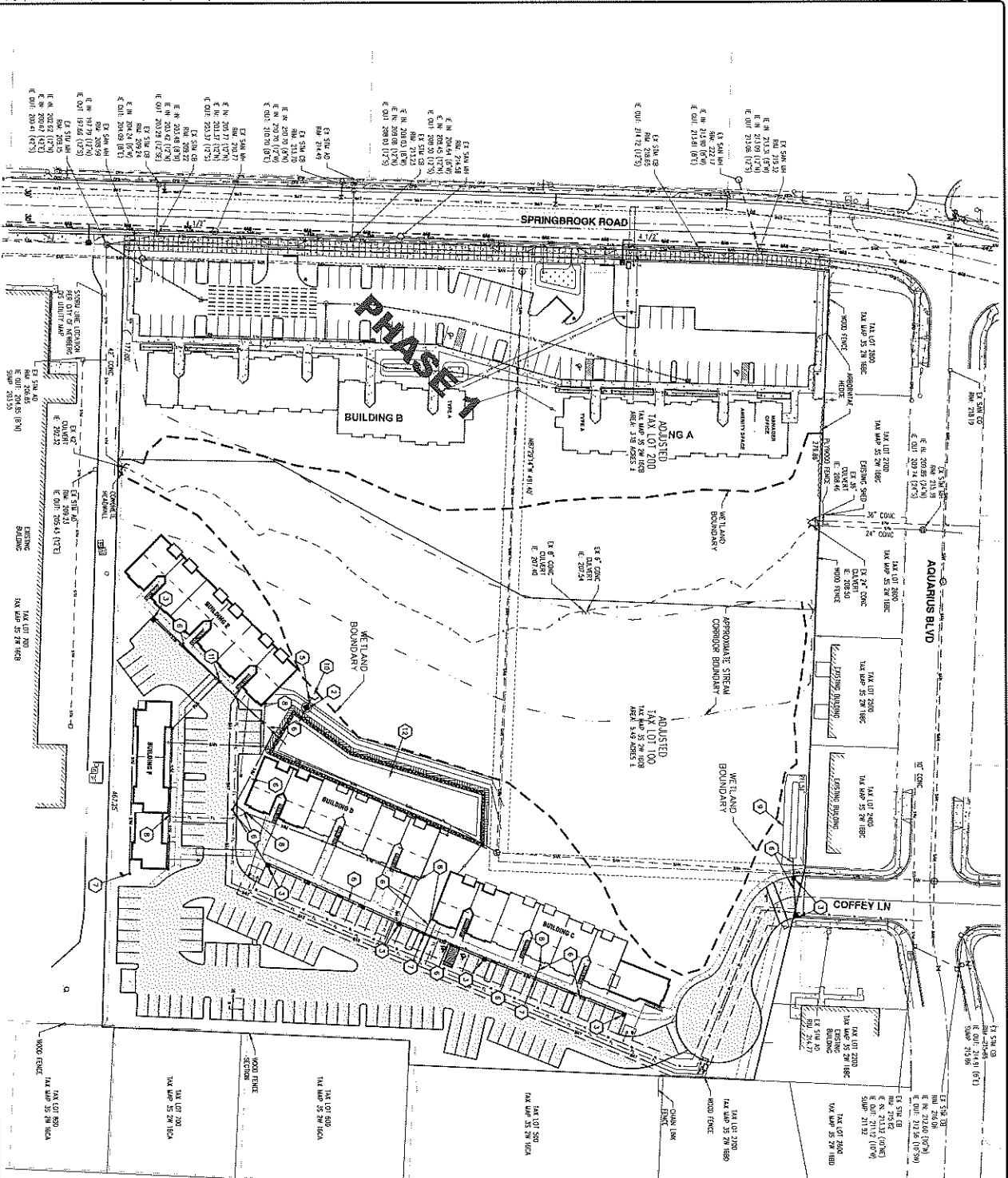
WE ENGINEERING SURVEYING & PLANNING

2150 W. PARKWAY AVE., SUITE 6
 WASHINGTON, DC 20007
 TEL: (202) 462-4168
 FAX: (202) 462-4168

www.wepc.com

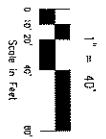


NO.	DATE	REVISION



- STORMWATER NOTES**
1. PROPOSED 12" PVC STORM DRAIN
 2. PROPOSED FLOW CONTROL BASIN/ET
 3. PROPOSED STORM CATCH BASIN
 4. PROPOSED DETENTION CHAMBERS
 5. PROPOSED 8" PVC STORM DRAIN
 6. PROPOSED 8" PVC STORM DRAIN
 7. PROPOSED STORM CLEANOUT
 8. PROPOSED 18" DIA. 1' DEPT. COLLECTOR
 9. PROPOSED PLENUM BASK COLLECTOR
 10. PROPOSED RETENTION POND WITH FALL
 11. PROPOSED STORM DRAIN CLEAN OUT
 12. PROPOSED WATER QUALITY DETENTION POND

PRELIMINARY STORM DRAINAGE PLAN



DISIGNED BY:	ME
CHECKED BY:	EC
DATE:	02/17/2020
SCALE:	AS SHOWN
PROJECT NO.:	19-122-03
SHEET:	C7

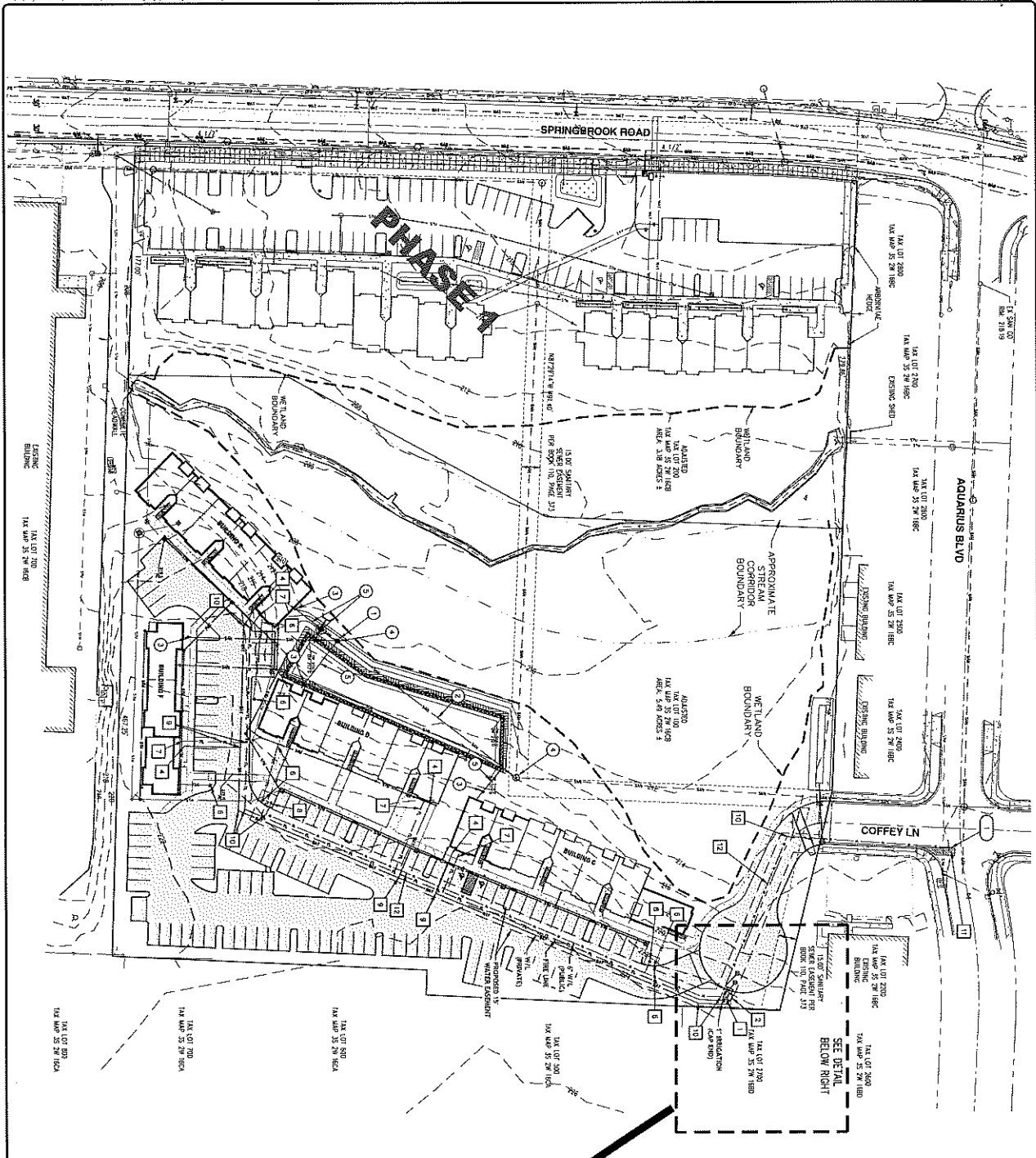
MEADOW BROOK VILLAS (PHASE 2)
THE CITY OF NEWBERG

PRELIMINARY STORM DRAINAGE PLAN

ENGINEERING SURVEYING PLANNING
WE
WILLIAMS ENGINEERING
1000 W. UNIVERSITY AVE., SUITE 200
NEWBERG, FL 32564
TEL: 352-544-8866
FAX: 352-544-8867
www.williams-engineering.com



NO.	DATE	REVISION



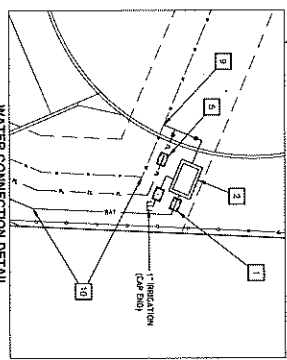
GENERAL NOTES:
 1. SANITARY SEWER PROPOSED PER CITY OF NEWBURG SUB DATA

7. SANITARY NOTES:

- 1. PROPOSED SANITARY SEWER MANHOLE
- 2. PROPOSED SANITARY SEWER LINE
- 3. PROPOSED SANITARY CLEAN OUT
- 4. CONNECT TO EXISTING/PROPOSED SANITARY SEWER MANHOLE
- 5. PROPOSED SEWER LATERAL

7. WATER NOTES:

- 1. PROPOSED DOMESTIC WATER METER
- 2. PROPOSED DOMESTIC DOUBLE CHECK VALVE
- 3. PROPOSED SHUT-OFF DOUBLE CHECK VALVE
- 4. PROPOSED DOMESTIC CONNECTION TO BUILDING
- 5. PROPOSED THE WATER BOARD ORDER SECTION ASSUMED
- 6. PROPOSED 4" FIRE DEPARTMENT CONNECTION (FDC)
- 7. PROPOSED 4" FIRE WATER SERVICE TO BUILDING
- 8. PROPOSED FIRE HYDRANT
- 9. PROPOSED 12" - DOMESTIC
- 10. PROPOSED 8" - 24.5' & 11.5' BOND
- 11. PROPOSED 8" WATER MAIN
- 12. PROPOSED 8" WATER MAIN
- 13. PROPOSED 8" WATER MAIN
- 14. CAP DIA



PRELIMINARY SANITARY SEWER & WATER PLAN

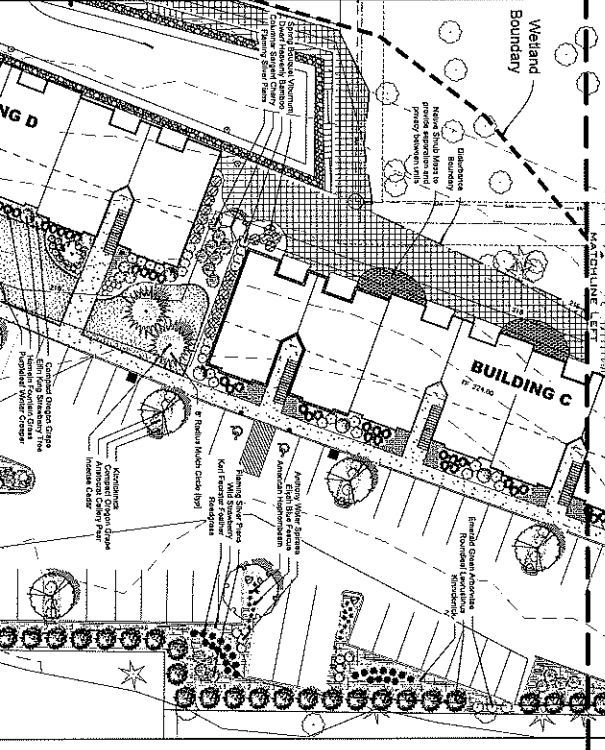
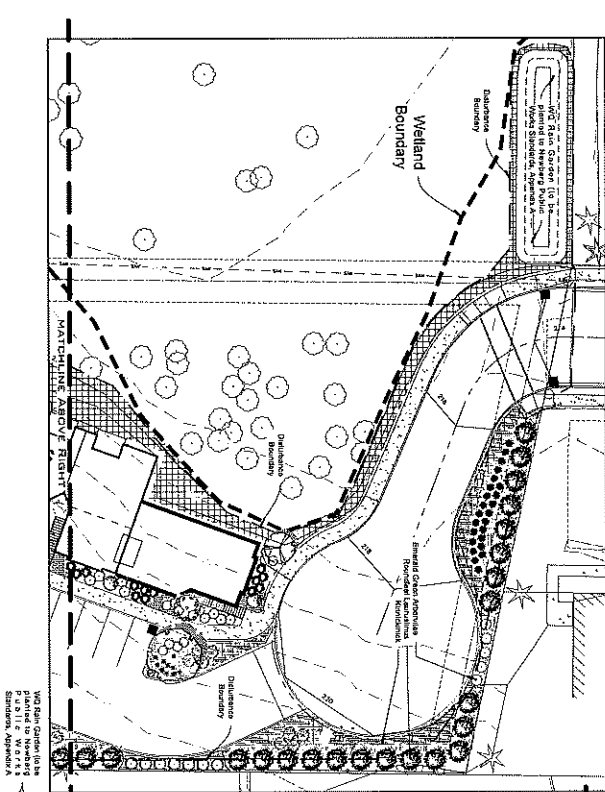
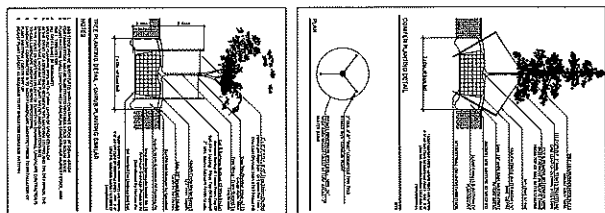


DESIGNED BY:	ME
DRAWN BY:	ME
CHECKED BY:	LC
DATE:	02/11/2020
SCALE:	AS SHOWN
PROJECT NO.:	19-122.03
SHEET NO.:	08

MEADOW BROOK VILLAS (PHASE 2)
 THE CITY OF NEWBURG

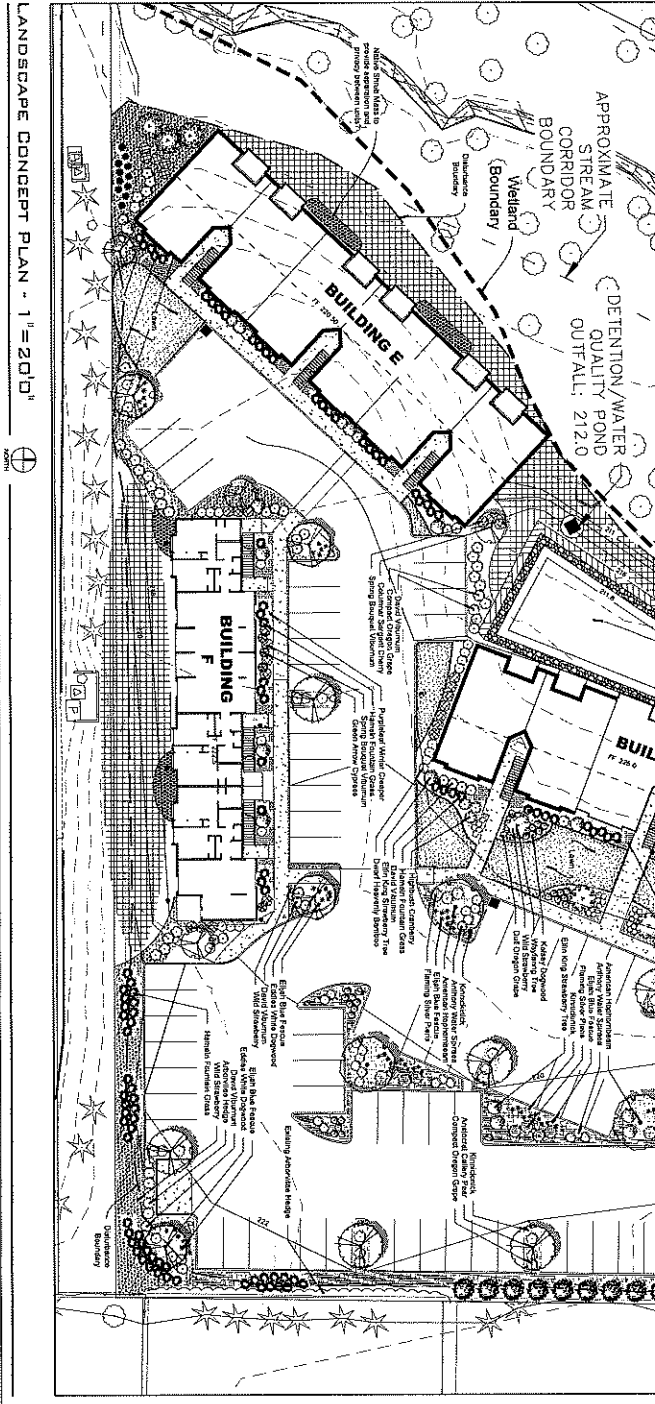
PRELIMINARY SANITARY SEWER & WATER PLAN

NO.	DATE	REVISION



PLANTING SCHEDULE

PLANT NAME	QTY	SIZE	CONDITION	QUANTITY
1. American Elm	100	6.0"	QTY	100
2. American Elm	100	6.0"	QTY	100
3. American Elm	100	6.0"	QTY	100
4. American Elm	100	6.0"	QTY	100
5. American Elm	100	6.0"	QTY	100
6. American Elm	100	6.0"	QTY	100
7. American Elm	100	6.0"	QTY	100
8. American Elm	100	6.0"	QTY	100
9. American Elm	100	6.0"	QTY	100
10. American Elm	100	6.0"	QTY	100
11. American Elm	100	6.0"	QTY	100
12. American Elm	100	6.0"	QTY	100
13. American Elm	100	6.0"	QTY	100
14. American Elm	100	6.0"	QTY	100
15. American Elm	100	6.0"	QTY	100
16. American Elm	100	6.0"	QTY	100
17. American Elm	100	6.0"	QTY	100
18. American Elm	100	6.0"	QTY	100
19. American Elm	100	6.0"	QTY	100
20. American Elm	100	6.0"	QTY	100
21. American Elm	100	6.0"	QTY	100
22. American Elm	100	6.0"	QTY	100
23. American Elm	100	6.0"	QTY	100
24. American Elm	100	6.0"	QTY	100
25. American Elm	100	6.0"	QTY	100
26. American Elm	100	6.0"	QTY	100
27. American Elm	100	6.0"	QTY	100
28. American Elm	100	6.0"	QTY	100
29. American Elm	100	6.0"	QTY	100
30. American Elm	100	6.0"	QTY	100
31. American Elm	100	6.0"	QTY	100
32. American Elm	100	6.0"	QTY	100
33. American Elm	100	6.0"	QTY	100
34. American Elm	100	6.0"	QTY	100
35. American Elm	100	6.0"	QTY	100
36. American Elm	100	6.0"	QTY	100
37. American Elm	100	6.0"	QTY	100
38. American Elm	100	6.0"	QTY	100
39. American Elm	100	6.0"	QTY	100
40. American Elm	100	6.0"	QTY	100
41. American Elm	100	6.0"	QTY	100
42. American Elm	100	6.0"	QTY	100
43. American Elm	100	6.0"	QTY	100
44. American Elm	100	6.0"	QTY	100
45. American Elm	100	6.0"	QTY	100
46. American Elm	100	6.0"	QTY	100
47. American Elm	100	6.0"	QTY	100
48. American Elm	100	6.0"	QTY	100
49. American Elm	100	6.0"	QTY	100
50. American Elm	100	6.0"	QTY	100



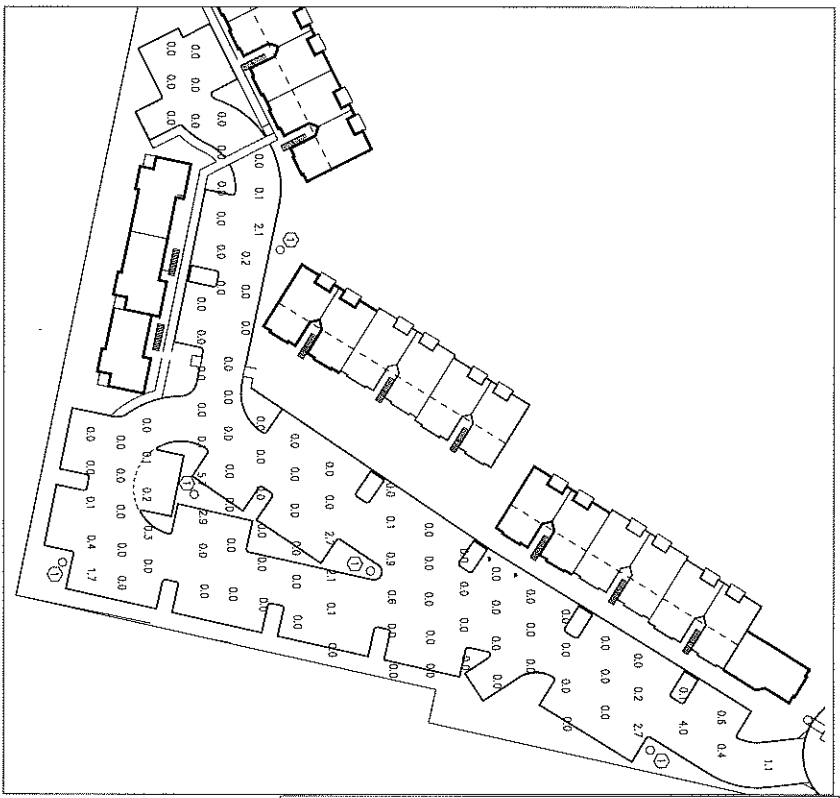
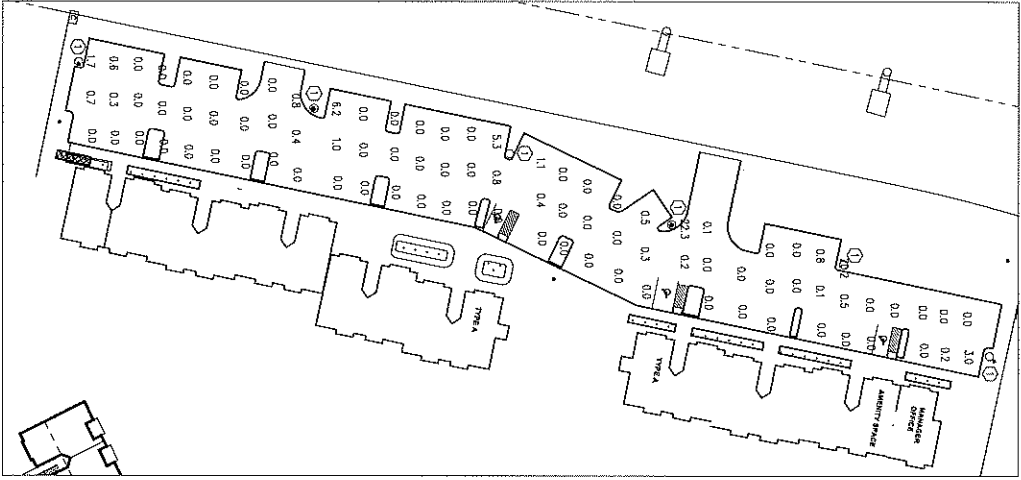
DATE: 02.17.20
DRAWN BY: AAM
CHECKED BY: JSM
DATE: 02.17.20
JOB NO: 197358

REV: 04.14.20

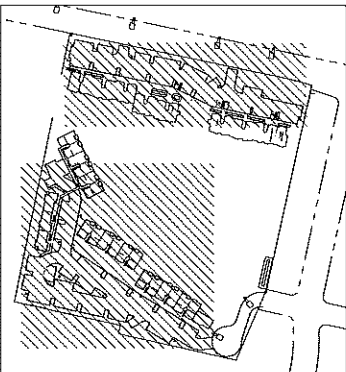
Meadowbrook Crossing Apts Ph 2
1306 Springbrook Road
Newberg

PROJECT NO: 197358
SHEET NO: 1 OF 2

REGISTERED ARCHITECT
LANDSCAPE ARCHITECT
OREGON
J. FAFFELBERG & ASSOCIATES, INC.
LANDSCAPE ARCHITECTS
1240 N. COMMERCE STREET
NEWBERG, OREGON 97132
PHONE: 503.735.7132



SP-2.00 PLAN NOTES
 1 NEW SITE LIGHT TO BE INSTALLED. SEE CUT SHEET THIS SHEET. PROVIDE BASE PER MANUFACTURER.



NEPTUN

LED

100,000 hrs

GENERAL DESCRIPTION

APPLICATION

STRUCTURE, MATERIALS & FINISHES

100,000 hrs

100,000 hrs