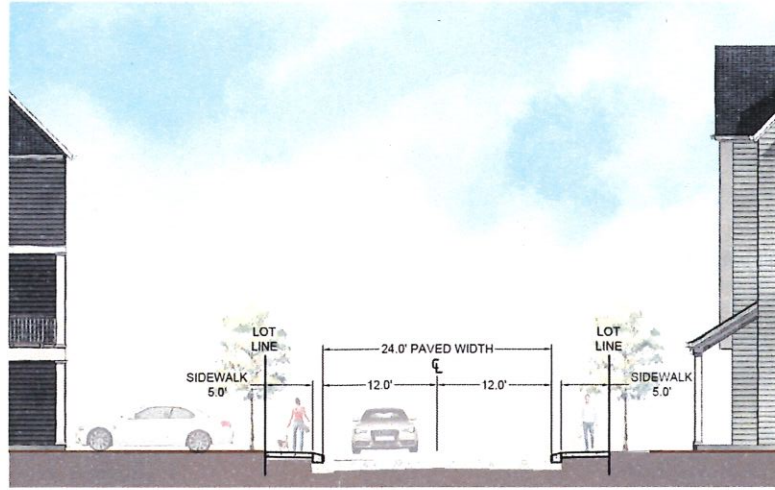
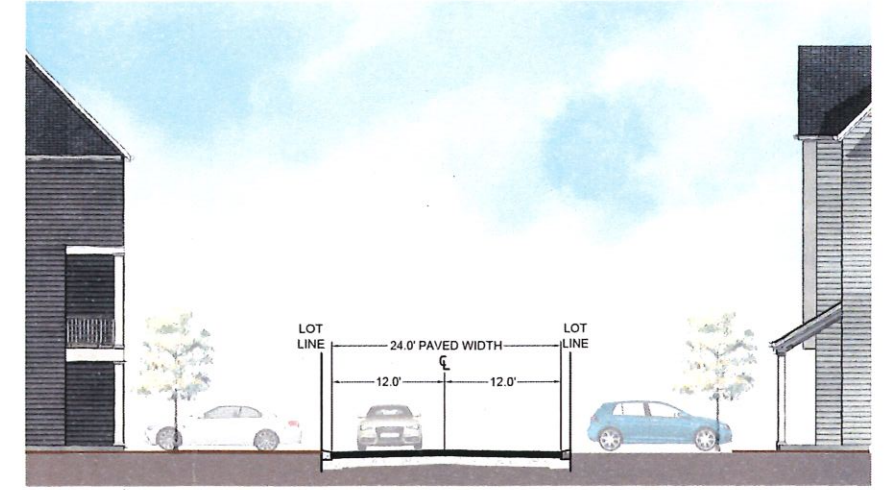


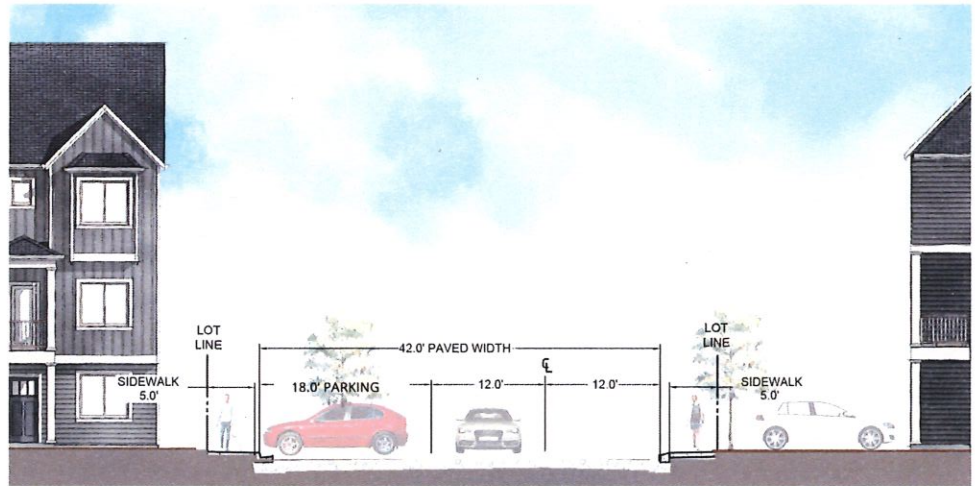
A - NEKIA (NORTH), EAD (NORTH)



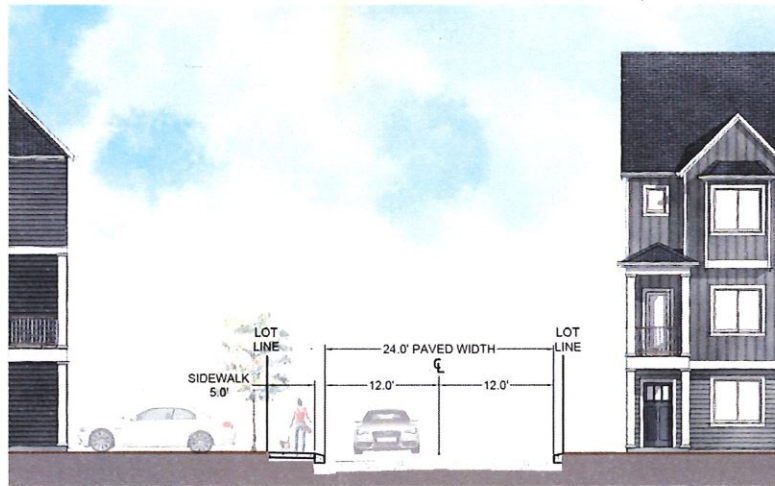
B - NEKIA (SOUTH)



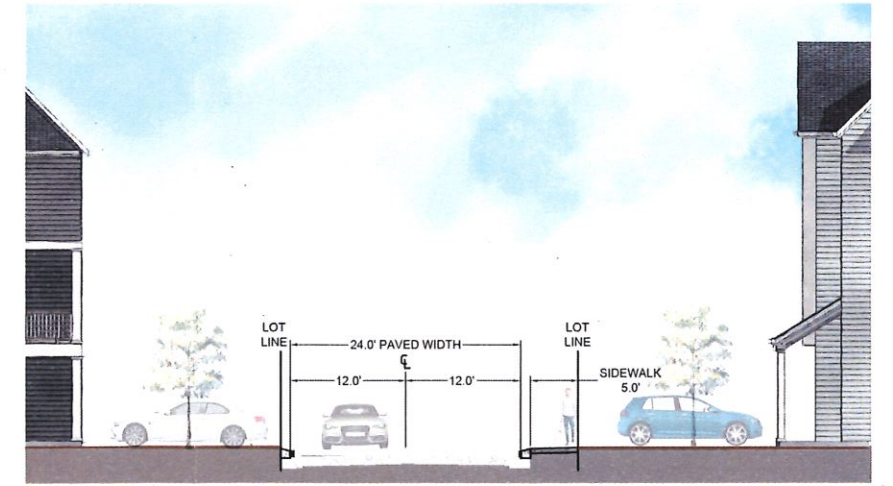
C - KNAPPA, PEAVINE, DUPEE, BRIEDWELL, OLYIC, CHEHALIS, & HAZELAIR



D - HEMBRE & LABISH



E - CLOQUATO



F - EAD (SOUTH)

CRESTVIEW CROSSING

PEDESTRIAN CIRCULATION EXHIBIT

3J CONSULTING

CIVIL ENGINEERING | WATER RESOURCES | COMMUNITY PLANNING

FEBRUARY 14, 2019