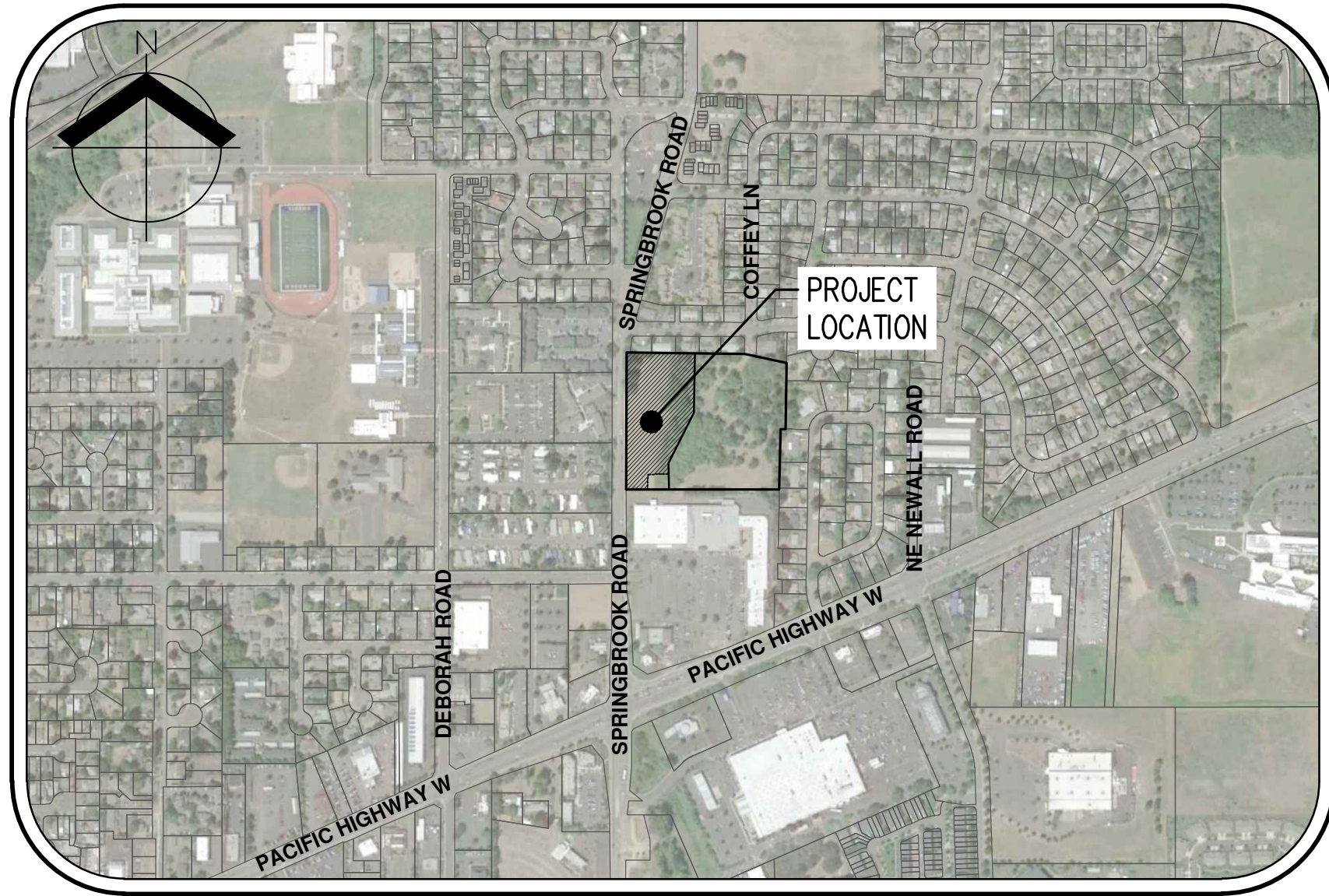
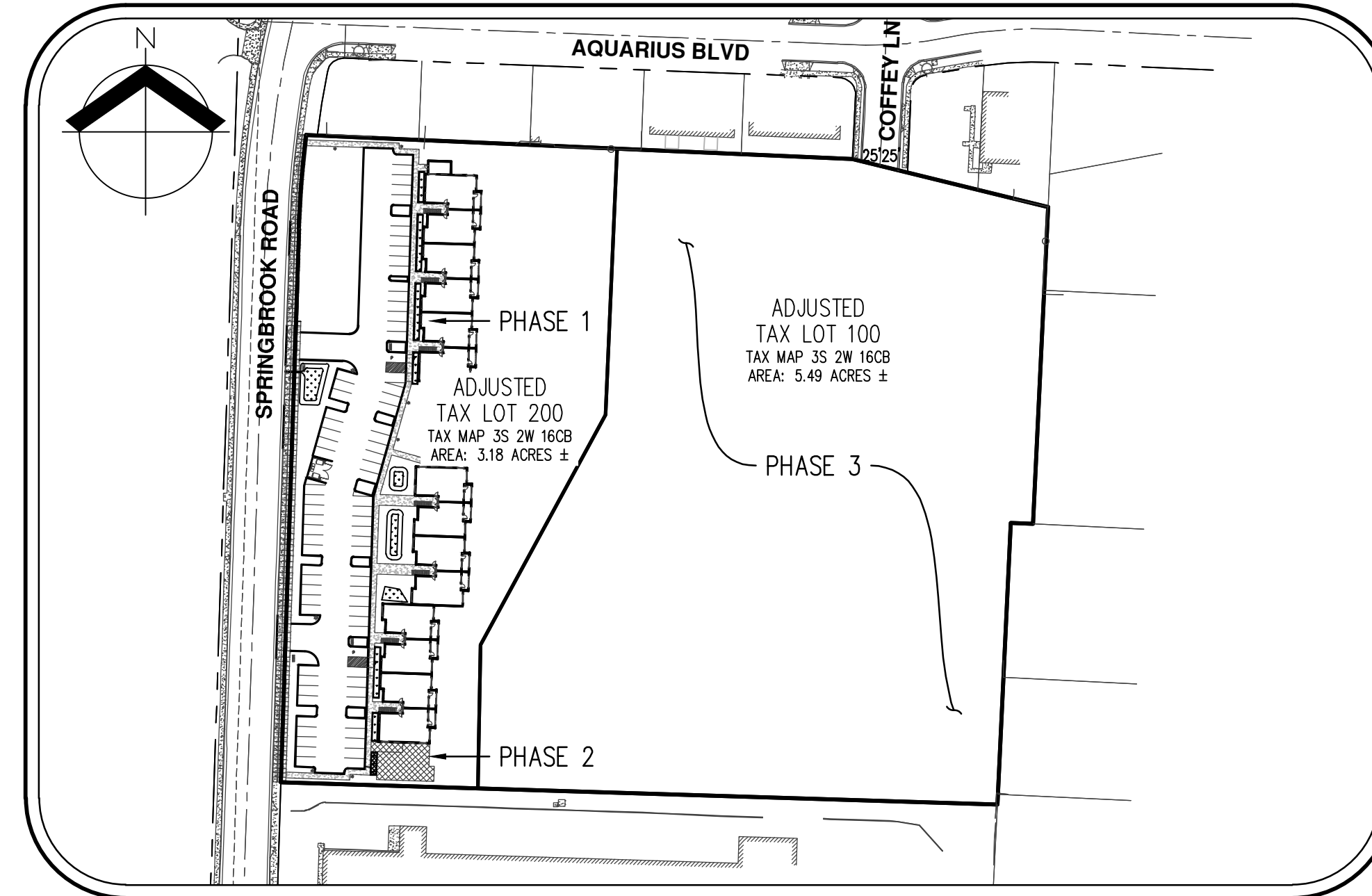


MEADOW CREEK APARTMENTS

CIVIL ENGINEERING DESIGN REVIEW PLANS (PHASE 1)



VICINITY MAP
NOT TO SCALE



SITE MAP
NOT TO SCALE

**CIVIL ENGINEERING/
LANDSCAPE ARCHITECTURE
AND SURVEYING FIRM:**

AKS ENGINEERING & FORESTRY
CONTACT: CHUCK GREGORY, PE
12965 SW HERMAN ROAD
SUITE 100
TUALATIN, OR 97062
PH: 503-563-6151
FAX: 503-563-6152

DEVELOPER/OWNER

M/JG DEVELOPMENT
CONTACT: MIKE GOUGLER
1478 NE KILLINGSWORTH STREET
NEWBERG, OR 97132
PH: 503-810-5576
E: GGOUG@YAHOO.COM

LEGEND

EXISTING		PROPOSED		EXISTING		PROPOSED	
DECIDUOUS TREE				STORM SEWER CLEAN OUT			
CONIFEROUS TREE				STORM SEWER CATCH BASIN			
FIRE HYDRANT				STORM SEWER MANHOLE			
WATER BLOWOFF				GAS METER			
WATER METER				GAS VALVE			
WATER VALVE				GUY WIRE ANCHOR			
DOUBLE CHECK VALVE				POWER POLE			
AIR RELEASE VALVE				POWER VAULT			
SANITARY SEWER CLEAN OUT				POWER JUNCTION BOX			
SANITARY SEWER MANHOLE				POWER PEDESTAL			
SIGN				COMMUNICATIONS VAULT			
STREET LIGHT				COMMUNICATIONS JUNCTION BOX			
MAILBOX				COMMUNICATIONS RISER			
				DOWN SPOUT			
EXISTING		PROPOSED		EXISTING		PROPOSED	
RIGHT-OF-WAY LINE							
BOUNDARY LINE							
PROPERTY LINE							
CENTERLINE							
DITCH							
CURB							
EDGE OF PAVEMENT							
EASEMENT							
FENCE LINE							
GRAVEL EDGE							
POWER LINE							
OVERHEAD WIRE							
COMMUNICATIONS LINE							
FIBER OPTIC LINE							
GAS LINE							
STORM SEWER LINE							
SANITARY SEWER LINE							
WATER LINE							

PROPERTY DESCRIPTION:
YAMHILL COUNTY TAX MAP 3S 2W 16CB, TAX LOT 100 & 200.

VERTICAL DATUM
VERTICAL DATUM: ELEVATIONS ARE BASED YAMHILL COUNTY DLC NO. 52. LOCATED AT THE NW CORNER OF SPRINGBROOK WAY AND DOUGLAS AVENUE, THE RECORD ELEVATION WAS CONVERTED TO NAVD 88 USING A VERTCON DERIVED CONVERSION FACTOR OF 3.422, RESULTING IN A HELD ELEVATION OF 223.37 (NAVD 88).

- SHEET INDEX:**
- C1 COVER SHEET WITH VICINITY MAP, SITE MAP, AND LEGEND
 - C2 EXISTING CONDITIONS PLAN
 - C3 EXISTING CONDITIONS PLAN
 - C4 PRELIMINARY DEMOLITION & EROSION & SEDIMENT CONTROL PLAN
 - C5 PRELIMINARY GRADING PLAN
 - C6 PRELIMINARY SITE PLAN
 - C7 PRELIMINARY STORM DRAINAGE PLAN
 - C8 PRELIMINARY SANITARY SEWER & WATER PLAN
 - L1 PRELIMINARY LANDSCAPE PLAN

ATTENTION EXCAVATORS:

OREGON LAW REQUIRES YOU TO FOLLOW RULES ADOPTED BY THE OREGON UTILITY NOTIFICATION CENTER. THOSE RULES ARE SET FORTH IN OAR 952-001-0010 THROUGH OAR 952-001-0090. YOU MAY OBTAIN COPIES OF THESE RULES FROM THE CENTER BY CALLING 503-232-1987. IF YOU HAVE ANY QUESTIONS ABOUT THE RULES, YOU MAY CONTACT THE CENTER. YOU MUST NOTIFY THE CENTER AT LEAST TWO BUSINESS DAYS BUT NOT MORE THAN TEN BUSINESS DAYS, BEFORE COMMENCING AN EXCAVATION. CALL 503-246-6699.



DESIGNED BY: CAK
DRAWN BY: AMC
CHECKED BY: CEG
SCALE: AS NOTED

DATE: 03/30/2018

REGISTERED PROFESSIONAL
ENGINEER
PRELIMINARY
NOT FOR
CONSTRUCTION
EDWARD GREGORY
RENEWS: JUNE 30, 2019

REVISIONS

JOB NUMBER
5797

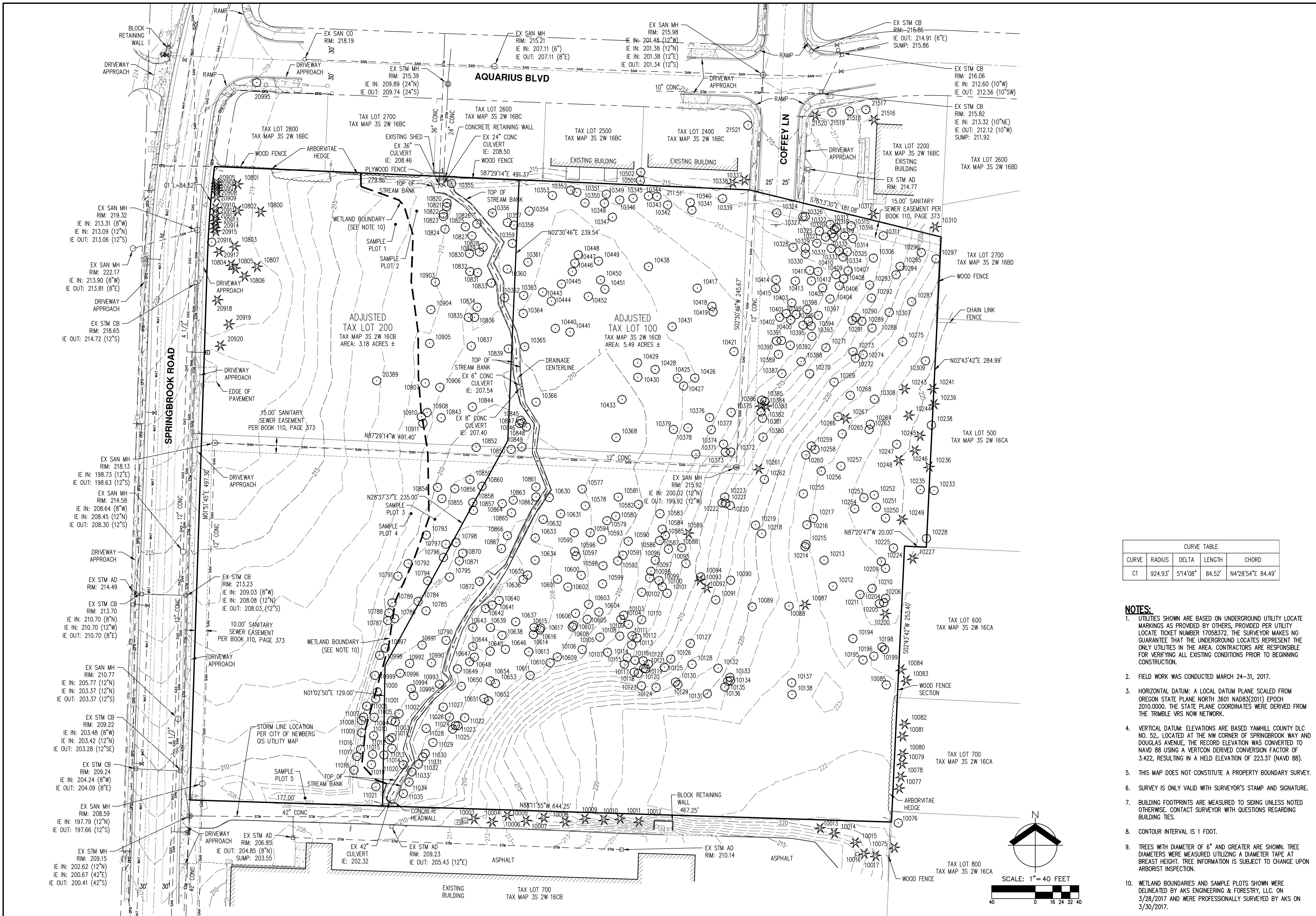
SHEET
C1

EXISTING CONDITIONS PLAN

DESIGNED BY: BRH
DRAWN BY: BRH
CHECKED BY: NSW
SCALE: AS NOTED
DATE: 03/20/2018

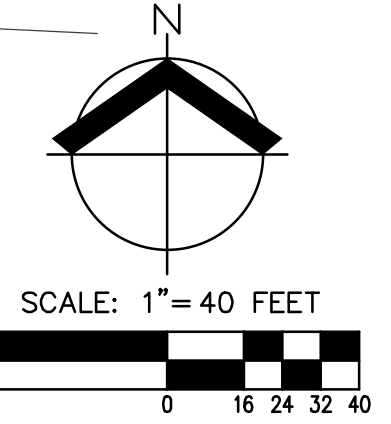
REGISTERED PROFESSIONAL LAND SURVEYOR
NICK WHITE
70652LS
RENEWED: 6/30/18

REVISIONS
JOB NUMBER
5797
SHEET
C2



CURVE TABLE			
CURVE	RADIUS	DELTA	CHORD
C1	924.93'	51°4'08"	84.52' N4°28'54"E 84.49'

- NOTES:**
- UTILITIES SHOWN ARE BASED ON UNDERGROUND UTILITY LOCATE MARKINGS AS PROVIDED BY OTHERS, PROVIDED PER UTILITY LOCATE TICKET NUMBER 17058372. THE SURVEYOR MAKES NO GUARANTEE THAT THE UNDERGROUND LOCATES REPRESENT THE ONLY UTILITIES IN THE AREA. CONTRACTORS ARE RESPONSIBLE FOR VERIFYING ALL EXISTING CONDITIONS PRIOR TO BEGINNING CONSTRUCTION.
 - FIELD WORK WAS CONDUCTED MARCH 24-31, 2017.
 - HORIZONTAL DATUM: A LOCAL DATUM PLANE SCALED FROM OREGON STATE PLANE NORTH 3601 NAD83(2011) EPOCH 2010.0000. THE STATE PLANE COORDINATES WERE DERIVED FROM THE TRIMBLE VRS NOW NETWORK.
 - VERTICAL DATUM: ELEVATIONS ARE BASED YAMHILL COUNTY DLC NO. 52, LOCATED AT THE NW CORNER OF SPRINGBROOK WAY AND DOUGLAS AVENUE. THE RECORD ELEVATION WAS CONVERTED TO NAVD 88 USING A VERTICON DERIVED CONVERSION FACTOR OF 3.422, RESULTING IN A HELD ELEVATION OF 223.37' (NAVD 88).
 - THIS MAP DOES NOT CONSTITUTE A PROPERTY BOUNDARY SURVEY.
 - SURVEY IS ONLY VALID WITH SURVEYOR'S STAMP AND SIGNATURE.
 - BUILDING FOOTPRINTS ARE MEASURED TO SIDING UNLESS NOTED OTHERWISE. CONTACT SURVEYOR WITH QUESTIONS REGARDING BUILDING TIES.
 - CONTOUR INTERVAL IS 1 FOOT.
 - TREES WITH DIAMETER OF 6" AND GREATER ARE SHOWN. TREE DIAMETERS WERE MEASURED UTILIZING A DIAMETER TAPE AT BREAST HEIGHT. TREE INFORMATION IS SUBJECT TO CHANGE UPON ARBORIST INSPECTION.
 - WETLAND BOUNDARIES AND SAMPLE PLOTS SHOWN WERE DELINEATED BY AKS ENGINEERING & FORESTRY, LLC. ON 3/28/2017 AND WERE PROFESSIONALLY SURVEYED BY AKS ON 3/30/2017.



TREE TABLE:

TREE NUMBER	SPECIES	DBH (INCHES)	TREE NUMBER	SPECIES	DBH (INCHES)	TREE NUMBER	SPECIES	DBH (INCHES)	TREE NUMBER	SPECIES	DBH (INCHES)	TREE NUMBER	SPECIES	DBH (INCHES)	TREE NUMBER	SPECIES	DBH (INCHES)
10003	CONIFEROUS	18	10135	DECIDUOUS	7	10290	DECIDUOUS	8	10378	DECIDUOUS	21	10586	DECIDUOUS	6	10803	CONIFEROUS	16
10004	CONIFEROUS	20	10136	DECIDUOUS	11	10291	DECIDUOUS	7	10379	DECIDUOUS	16	10587	DECIDUOUS	8	10804	CONIFEROUS	21
10005	CONIFEROUS	22	10137	DECIDUOUS	8, 11	10292	DECIDUOUS	7	10380	DECIDUOUS	16	10588	DECIDUOUS	10	10805	CONIFEROUS	24
10006	CONIFEROUS	23	10138	DECIDUOUS	14, 18	10293	DECIDUOUS	10	10381	DECIDUOUS	16	10589	CONIFEROUS	20	10806	CONIFEROUS	10, 12, 16, 24
10007	CONIFEROUS	22	10194	DECIDUOUS	14	10294	DECIDUOUS	18	10382	DECIDUOUS	19	10590	DECIDUOUS	11	10807	CONIFEROUS	15
10008	CONIFEROUS	18	10195	DECIDUOUS	8	10295	DECIDUOUS	6	10383	CONIFEROUS	12	10591	DECIDUOUS	13	10820	DECIDUOUS	17
10009	CONIFEROUS	13, 16, 19	10196	DECIDUOUS	9	10296	DECIDUOUS	13	10384	DECIDUOUS	8	10592	DECIDUOUS	9	10821	DECIDUOUS	15
10010	CONIFEROUS	22	10198	DECIDUOUS	8	10297	DECIDUOUS	13	10385	DECIDUOUS	10, 11	10593	DECIDUOUS	8, 18	10822	DECIDUOUS	13
10011	CONIFEROUS	11, 13	10199	DECIDUOUS	9	10306	DECIDUOUS	8	10386	CONIFEROUS	23	10594	DECIDUOUS	15	10823	DECIDUOUS	13
10012	CONIFEROUS	11, 16, 17	10200	CONIFEROUS	34	10307	DECIDUOUS	8	10387	DECIDUOUS	17	10595	DECIDUOUS	12	10824	DECIDUOUS	10, 15, 18
10013	CONIFEROUS	22	10204	DECIDUOUS	21	10308	DECIDUOUS	8	10388	DECIDUOUS	8	10596	DECIDUOUS	7, 11	10825	DECIDUOUS	15
10014	CONIFEROUS	20	10205	DECIDUOUS	14	10309	DECIDUOUS	8	10389	DECIDUOUS	8, 17	10597	DECIDUOUS	23	10826	DECIDUOUS	10
10015	CONIFEROUS	21	10206	DECIDUOUS	7	10310	CONIFEROUS	32	10390	DECIDUOUS	14	10598	DECIDUOUS	12	10827	DECIDUOUS	13, 16
10016	CONIFEROUS	12	10209	DECIDUOUS	12	10311	DECIDUOUS	54	10391	DECIDUOUS	12	10599	DECIDUOUS	18	10828	DECIDUOUS	13
10017	CONIFEROUS	16	10210	DECIDUOUS	9	10312	CONIFEROUS	20	10392	DECIDUOUS	13	10600	DECIDUOUS	6, 7	10829	DECIDUOUS	10
10018	CONIFEROUS	25	10211	DECIDUOUS	18	10314	DECIDUOUS	10	10393	DECIDUOUS	6, 13	10601	DECIDUOUS	6, 6, 13, 13	10830	DECIDUOUS	12, 13
10019	CONIFEROUS	17, 28	10212	DECIDUOUS	20	10315	DECIDUOUS	8	10394	DECIDUOUS	14	10602	DECIDUOUS	6, 7	10831	DECIDUOUS	10
10020	CONIFEROUS	11, 16, 17	10200	CONIFEROUS	34	10307	DECIDUOUS	8	10387	DECIDUOUS	17	10595	DECIDUOUS	12	10824	DECIDUOUS	10, 15, 18
10021	CONIFEROUS	22	10204	DECIDUOUS	21	10308	DECIDUOUS	8	10388	DECIDUOUS	8	10596	DECIDUOUS	7, 11	10825	DECIDUOUS	15
10022	CONIFEROUS	20	10205	DECIDUOUS	14	10309	DECIDUOUS	8	10389	DECIDUOUS	8, 17	10597	DECIDUOUS	23	10826	DECIDUOUS	10
10023	CONIFEROUS	21	10206	DECIDUOUS	7	10310	CONIFEROUS	32	10390	DECIDUOUS	14	10598	DECIDUOUS	12	10827	DECIDUOUS	13, 16
10024	CONIFEROUS	12	10209	DECIDUOUS	12	10311	DECIDUOUS	54	10391	DECIDUOUS	12	10599	DECIDUOUS	18	10828	DECIDUOUS	13
10025	CONIFEROUS	16	10210	DECIDUOUS	9	10312	CONIFEROUS	20	10392	DECIDUOUS	13	10600	DECIDUOUS	6, 7	10829	DECIDUOUS	10
10026	CONIFEROUS	25	10211	DECIDUOUS	18	10314	DECIDUOUS	10	10393	DECIDUOUS	6, 13	10601	DECIDUOUS	6, 6, 13, 13	10830	DECIDUOUS	12, 13
10027	CONIFEROUS	17, 28	10212	DECIDUOUS	20	10315	DECIDUOUS	8	10394	DECIDUOUS	14	10602	DECIDUOUS	6, 7	10831	DECIDUOUS	10
10028	CONIFEROUS	25	10213	DECIDUOUS	31	10316	DECIDUOUS	8	10395	DECIDUOUS	23	10603	DECIDUOUS	12	10832	DECIDUOUS	15
10029	CONIFEROUS	20	10214	DECIDUOUS	16	10317	DECIDUOUS	7	10396	DECIDUOUS	6	10604	DECIDUOUS	7	10833	DECIDUOUS	12
10030	CONIFEROUS	20	10215	DECIDUOUS	14	10318	DECIDUOUS	7	10397	DECIDUOUS	8	10605	DECIDUOUS	6	10834	DECIDUOUS	19
10031	CONIFEROUS	20	10216	DECIDUOUS	9	10319	DECIDUOUS	12	10398	DECIDUOUS	6, 14	10606	DECIDUOUS	11	10835	DECIDUOUS	16
10032	CONIFEROUS	25	10217	DECIDUOUS	10, 10	10320	DECIDUOUS	7	10399	DECIDUOUS	6	10607	DECIDUOUS	11	10836	DECIDUOUS	13, 17
10033	CONIFEROUS	25	10218	DECIDUOUS	19	10321	DECIDUOUS	7	10400	DECIDUOUS	7	10608	DECIDUOUS	8	10837	DECIDUOUS	18, 23
10034	CONIFEROUS	25	10219	DECIDUOUS	8	10322	DECIDUOUS	8	10401	DECIDUOUS	7	10609	DECIDUOUS	13	10839	DECIDUOUS	19
10035	CONIFEROUS	30	10220	DECIDUOUS	11	10324	DECIDUOUS	10	10402	DECIDUOUS	15	10610	DECIDUOUS	20	10843	DECIDUOUS	21
10036	CONIFEROUS	17	10221	DECIDUOUS	13	10325	DECIDUOUS	8, 9	10403	DECIDUOUS	7, 9	10611	DECIDUOUS	10, 16	10844	DECIDUOUS	16, 21
10037	CONIFEROUS	22	10222	DECIDUOUS	11	10326	DECIDUOUS	7	10404	DECIDUOUS	6, 7	10613	DECIDUOUS	11	10845	DECIDUOUS	8
10038	CONIFEROUS	6, 7, 8, 9, 9	10223	DECIDUOUS	7	10327	DECIDUOUS	8, 11, 12	10405	DECIDUOUS	6, 8, 8	10614	DECIDUOUS	7, 10	10846	DECIDUOUS	7
10039	CONIFEROUS	7, 11	10224	DECIDUOUS	6	10328	DECIDUOUS	12	10406	DECIDUOUS	10, 11, 11	10615	DECIDUOUS	10	10847	DECIDUOUS	7
10040	CONIFEROUS	14	10225	DECIDUOUS	12	10329	DECIDUOUS	12	10407	DECIDUOUS	7, 8	10616	DECIDUOUS	10	10848	DECIDUOUS	8
10041	CONIFEROUS	13	10227	CONIFEROUS	37	10330	DECIDUOUS	14	10408	DECIDUOUS	12	10617	DECIDUOUS	6	10849	DECIDUOUS	7, 8, 11
10042	CONIFEROUS	16	10228	DECIDUOUS	18	10331	DECIDUOUS	12	10409	DECIDUOUS	8	10630	DECIDUOUS	15	10850	DECIDUOUS	15
10043	CONIFEROUS	20	10233	DECIDUOUS	14, 15, 18	10332	DECIDUOUS	12	10410	DECIDUOUS	7, 9	10631	DECIDUOUS	12	10852	DECIDUOUS	20
10044	CONIFEROUS	7	10235	DECIDUOUS	13, 13, 13	10333	DECIDUOUS	10	10411	DECIDUOUS	12	10632	DECIDUOUS	13	10854	DECIDUOUS	9, 9, 10
10045	CONIFEROUS	11	10236	CONIFEROUS	38	10334	DECIDUOUS	7	10412	DECIDUOUS	6, 7, 7, 8	10633	DECIDUOUS	9, 16	10855	DECIDUOUS	7, 31
10046	CONIFEROUS	6	10238	DECIDUOUS	7	10335	DECIDUOUS	11	10413	DECIDUOUS	8, 10	10634	DECIDUOUS	16	10856	DECIDUOUS	6
10047	CONIFEROUS	6	10239	CONIFEROUS	16	10337	CONIFEROUS	21	10414	DECIDUOUS	12, 10	10635	DECIDUOUS	6, 13	10857	DECIDUOUS	6, 7, 9
10048	CONIFEROUS	7	10241	CONIFEROUS	21	10338	CONIFEROUS	16	10415	DECIDUOUS	9, 9, 10, 10	10636	DECIDUOUS	8, 8	10858	DECIDUOUS	7
10049	CONIFEROUS	6	10243	CONIFEROUS	33	10339	DECIDUOUS	17	10417	DECIDUOUS	6, 9, 10, 11, 13	10637	DECIDUOUS	11, 13	10859	DECIDUOUS	7, 8, 10
10050	CONIFEROUS	8	10244	CONIFEROUS	12	10340	DECIDUOUS	11	10418	DECIDUOUS	7, 11, 12, 12	10638	DECIDUOUS	6	10860	DECIDUOUS	9, 10
10051	CONIFEROUS	13	10245	CONIFEROUS	32	10341	DECIDUOUS	11	10419	DECIDUOUS	11	10639	DECIDUOUS	10	10861	DECIDUOUS	6, 7, 9
10052	CONIFEROUS	10	10246	CONIFEROUS	20	10342	DECIDUOUS	10, 15	10421	DECIDUOUS	10	10640	DECIDUOUS	14	10862	DECIDUOUS	18
10053	CONIFEROUS	13	10247	DECIDUOUS	12	10343	DECIDUOUS	18	10425	DECIDUOUS	8, 9, 10, 10, 12, 13	10641	DECIDUOUS	11	10863	DECIDUOUS	9
10054	CONIFEROUS	9	10248	CONIFEROUS	33	10344	DECIDUOUS	17	10426	DECIDUOUS	23	10642	DECIDUOUS	13	10864	DECIDUOUS	10
10055	CONIFEROUS	14	10249	CONIFEROUS	38	10345	DECIDUOUS	12	10427	DECIDUOUS	13	10643	DECIDUOUS	10	10865	DECIDUOUS	10, 14
10056	CONIFEROUS	11	10250	DECIDUOUS	15	10346	DECIDUOUS	10	10428	DECIDUOUS	9, 10	10644	DECIDUOUS	11	10866	DECIDUOUS	9, 9, 10
10057	CONIFEROUS	9	10251	DECIDUOUS	13	10347	DECIDUOUS	19	10429	DECIDUOUS	19	10645	DECIDUOUS	11, 11	10867	DECIDUOUS	10, 13
10058	CONIFEROUS	14	10252	DECIDUOUS	14	10348	DECIDUOUS	9	10430	DECIDUOUS	7, 8, 8, 8, 9, 10	10646	DECIDUOUS	9	10870	DECIDUOUS	7, 7
10059	CONIFEROUS	7	10253	DECIDUOUS	23	10349	DECIDUOUS	14	10431	DECIDUOUS	10, 11	10647	DECIDUOUS	19	10871	DECIDUOUS	9
10060	CONIFEROUS	14	10254	DECIDUOUS	11, 13	10350	DECIDUOUS	9	10433	DECIDUOUS	8	10648	DECIDUOUS	16	10872	DECIDUOUS	9
10061	CONIFEROUS	11	10255	DECIDUOUS	23	10351	DECIDUOUS	24	10438	DECIDUOUS	21	10649	DECIDUOUS	9	10903	DECIDUOUS	25
10062	CONIFEROUS	6, 9	10256	DECIDUOUS	10	10352	DECIDUOUS	12	10440	DECIDUOUS	18	10650	DECIDUOUS	9	10904	DECIDUOUS	23
10063	CONIFEROUS	8	10257	DECIDUOUS	9	10353	DECIDUOUS	21	10441	DECIDUOUS	9, 10	10651	DECIDUOUS	11	10905	DECIDUOUS	14, 15, 17
10064	CONIFEROUS	11	10258	DECIDUOUS	7	10354	DECIDUOUS	26	10443	DECIDUOUS	17	10652	DECIDUOUS	9, 9, 18	10906	DECIDUOUS	21, 21
10065	CONIFEROUS	15	10259	DECIDUOUS	9, 9, 10	10355	DECIDUOUS	20	10444	DECIDUOUS	16	10653	DECIDUOUS	7, 9, 16	10907	DECIDUOUS	18, 19
10066	CONIFEROUS	11	10260	DECIDUOUS	17	10356	DECIDUOUS	25	10445	DECIDUOUS	20	10654	DECIDUOUS	6, 11	10908	DECIDUOUS	10
10067	CONIFEROUS	7, 8, 11	10261	CONIFEROUS	13, 20	10357	DECIDUOUS	6, 13	10446	DECIDUOUS	12	10784	DECIDUOUS	10	10910	DECIDUOUS	19, 22
10068	CONIFEROUS	13	10262	DECIDUOUS	8	10358	DECIDUOUS	13	10447	DECIDUOUS	14	10785	DECIDUOUS	6, 16	10911	DECIDUOUS	15
10069	CONIFEROUS	9	10263	DECIDUOUS	10	10359	DECIDUOUS	19	10448	DECIDUOUS	16	10786	DECIDUOUS	8	10990	DECIDUOUS	6, 7
10070	CONIFEROUS	11	10264	DECIDUOUS	11	10360	DECIDUOUS	20	10449	DECIDUOUS	6, 9	10787	DECIDUOUS	12	10991	DECIDUOUS	7, 11
10071	CONIFEROUS	8	10265	DECIDUOUS	11	10361	DECIDUOUS	20	10450	DECIDUOUS	10, 11	10788	DECIDUOUS	6, 7	10992	DECIDUOUS	10, 11
10072	CONIFEROUS	11	10266	DECIDUOUS	10	10362	DECIDUOUS	17	10451	DECIDUOUS	7, 8, 15	10789	DECIDUOUS	20	10993	DECIDUOUS	6, 11
10073	CONIFEROUS	8, 9, 12	10267	CONIFEROUS	26	10363	DECIDUOUS	13	10452	DECIDUOUS	6, 6, 9, 20, 21	10790	DECIDUOUS	6, 9, 10, 13	10994	DECIDUOUS	6, 6, 7, 11
10074	CONIFEROUS	13	10268	DECIDUOUS	17	10364	DECIDUOUS	10, 20	10501	DECIDUOUS	6	10791	DECIDUOUS	16, 16	10995	DECIDUOUS	9
10075	CONIFEROUS	10															

DESIGNED BY: CAK

DRAWN BY: AMC

CHECKED BY: CEG

SCALE: AS NOTED

DATE: 03/30/2018

REGISTERED PROFESSIONAL
 ENGINEER
 OREGON
 NO. 1958
 EDWARD GREGORY

RENEWALS: JUNE 30, 2019

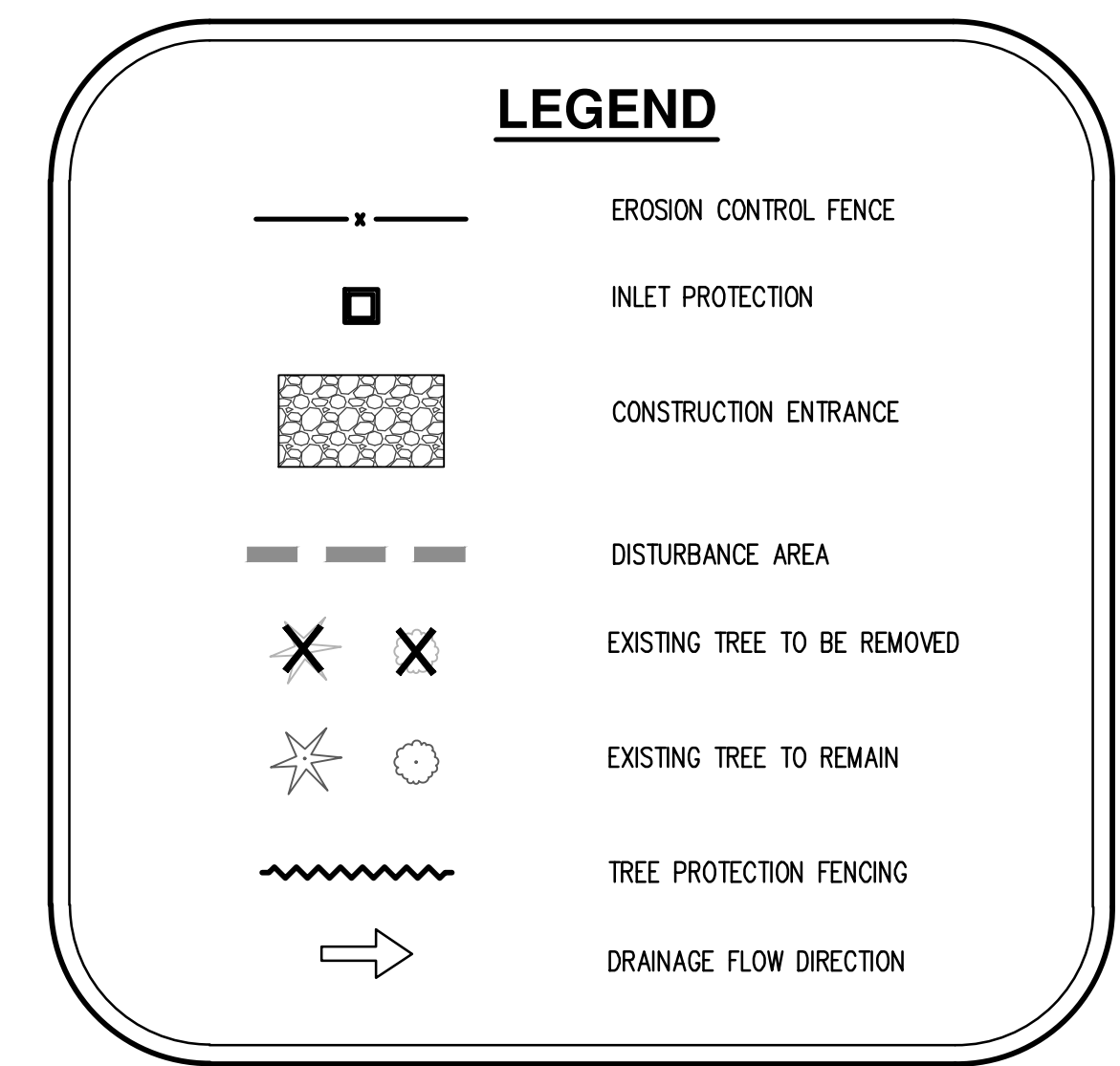
REVISIONS

JOB NUMBER

5797

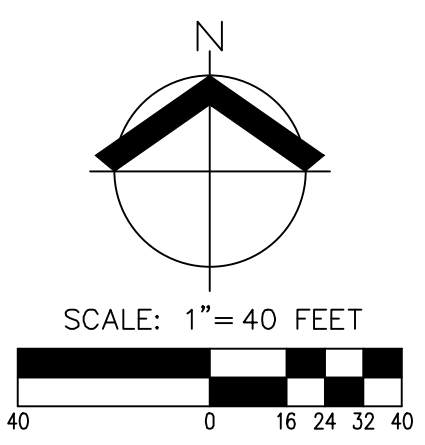
SHEET

C4



PRE-CONSTRUCTION, CLEARING, AND DEMOLITION NOTES:

1. ALL BASE ESC MEASURES (INLET PROTECTION, PERIMETER SEDIMENT CONTROL, GRAVEL CONSTRUCTION ENTRANCES, ETC.) MUST BE IN PLACE, FUNCTIONAL, AND APPROVED IN AN INITIAL INSPECTION, PRIOR TO COMMENCEMENT OF CONSTRUCTION ACTIVITIES.
2. SEDIMENT BARRIERS APPROVED FOR USE INCLUDE SEDIMENT FENCE, BERMS CONSTRUCTED OUT OF MULCH, CHIPPINGS, OR OTHER SUITABLE MATERIAL, STRAW WATTLES, OR OTHER APPROVED MATERIALS.
3. SENSITIVE RESOURCES INCLUDING, BUT NOT LIMITED TO, TREES, WETLANDS, AND RIPARIAN PROTECTION AREAS SHALL BE CLEARLY DELINEATED WITH ORANGE CONSTRUCTION FENCING OR CHAIN LINK FENCING IN A MANNER THAT IS CLEARLY VISIBLE TO ANYONE IN THE AREA. NO ACTIVITIES ARE PERMITTED TO OCCUR BEYOND THE CONSTRUCTION BARRIER.
4. CONSTRUCTION ENTRANCES SHALL BE INSTALLED AT THE BEGINNING OF CONSTRUCTION AND MAINTAINED FOR THE DURATION OF THE PROJECT. ADDITIONAL MEASURES INCLUDING, BUT NOT LIMITED TO, STREET SWEEPING, AND VACUUMING, MAY BE REQUIRED TO INSURE THAT ALL PAVED AREAS ARE KEPT CLEAN FOR THE DURATION OF THE PROJECT.
5. RUN-ON AND RUN-OFF CONTROLS SHALL BE IN PLACE AND FUNCTIONING PRIOR TO BEGINNING SUBSTANTIAL CONSTRUCTION ACTIVITIES. RUN-ON AND RUN-OFF CONTROL MEASURES INCLUDE: SLOPE DRAINS (WITH OUTLET PROTECTION), CHECK DAMS, SURFACE ROUGHENING, AND BANK STABILIZATION.
6. THESE EROSION AND SEDIMENT CONTROL PLANS ASSUME "DRY WEATHER" CONSTRUCTION. "WET WEATHER" CONSTRUCTION MEASURES NEED TO BE APPLIED BETWEEN OCTOBER 1ST AND MAY 31ST.



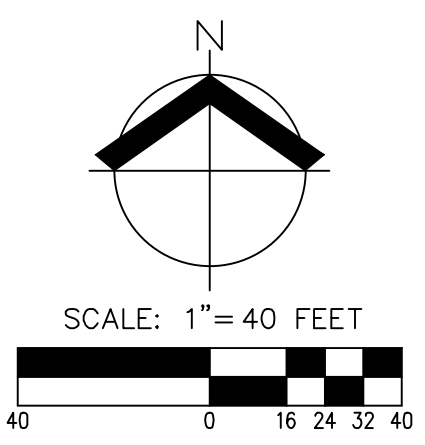
PRELIMINARY GRADING PLAN

DESIGNED BY: CAK
 DRAWN BY: AMC
 CHECKED BY: CEG
 SCALE: AS NOTED
 DATE: 03/30/2018

REGISTERED PROFESSIONAL ENGINEER
PRELIMINARY
 NOT FOR CONSTRUCTION
 EDWARD GREGORY
 RENEWS: JUNE 30, 2019

JOB NUMBER
5797
 SHEET
C5

LEGEND	
ASPHALT CONCRETE	AC: 100.00
TOP OF CURB	TC: 100.00
RIM ELEVATION	RM: 100.00
FINISHED FLOOR ELEVATION	FFE: 100.00
FINISHED GRADE	FG: 100.00
EXISTING GRADE	(EG: 100.00)



④ SITE NOTES:

1. PROPOSED 5 FT WIDE SIDEWALK
2. PROPOSED 12 FT WIDE PUBLIC SIDEWALK PER CROSS-SECTION AND SCORING PATTERN WITH 5.5' EASEMENT PER CROSS-SECTION
3. PROPOSED 9 FT WIDE PUBLIC SIDEWALK PER CROSS-SECTION AND SCORING PATTERN WITH 2.5' EASEMENT PER CROSS-SECTION
4. PROPOSED COMMERCIAL DRIVEWAY
5. PROPOSED 6" CURB
6. PROPOSED CONNECTION TO EXISTING SIDEWALK
7. PUBLIC STORMWATER EASEMENT
8. TRENCH DRAIN TO COLLECT PUBLIC RUNOFF
9. PUBLIC STORMWATER PLANTER
10. PRIVATE LIGHT POLE
11. PRIVATE LIGHTED BOLLARD
12. BUILDING MOUNTED LIGHTING
13. BIKE PARKING
14. ADA PARKING STALL WITH SIGN

DENSITY CALCULATION:

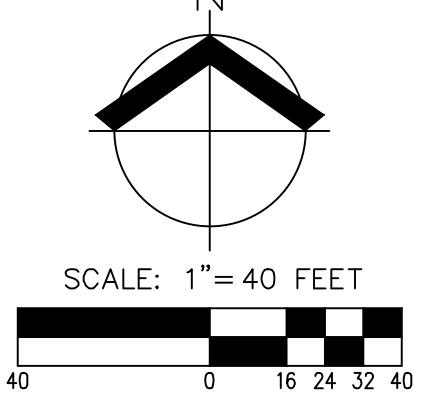
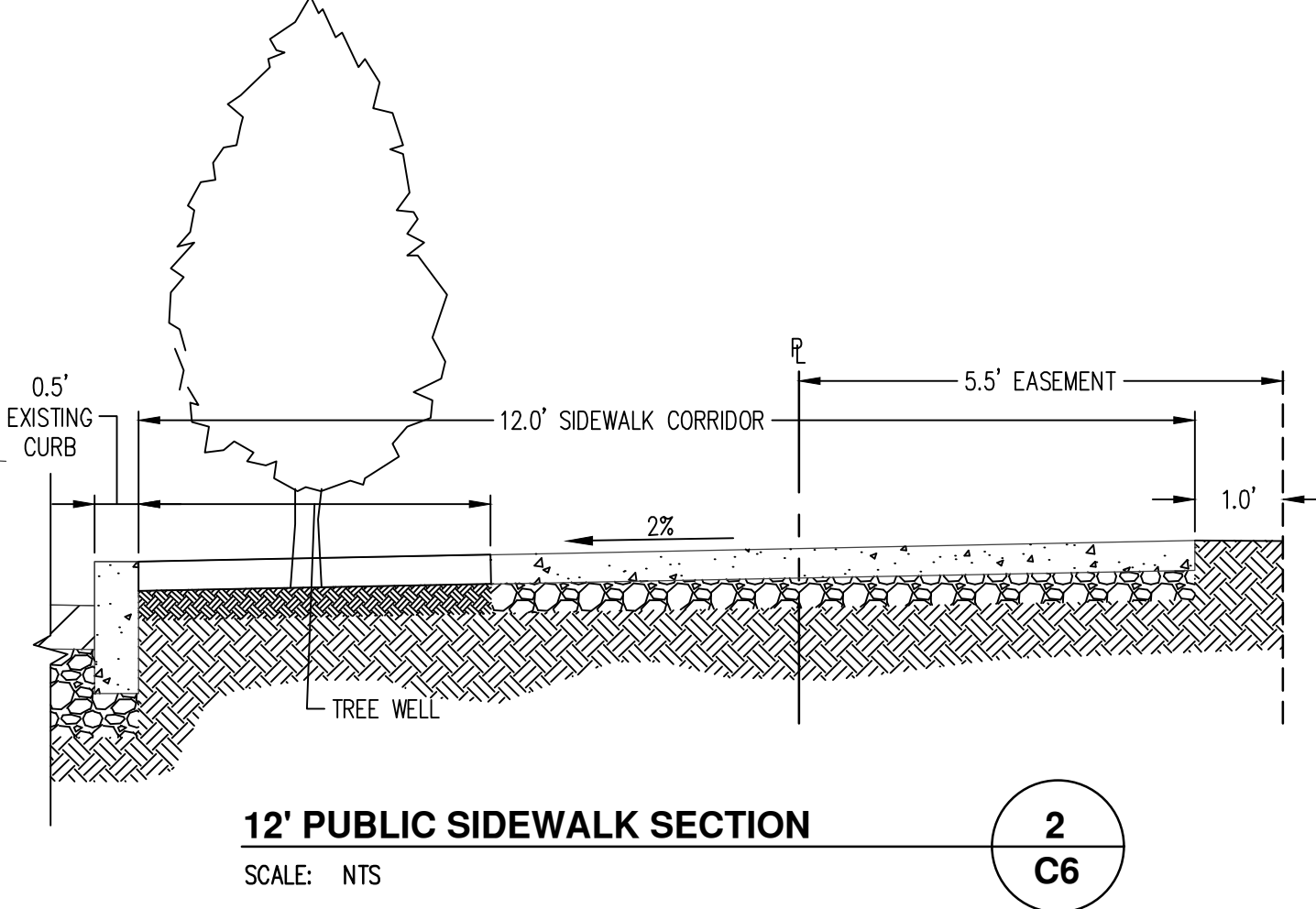
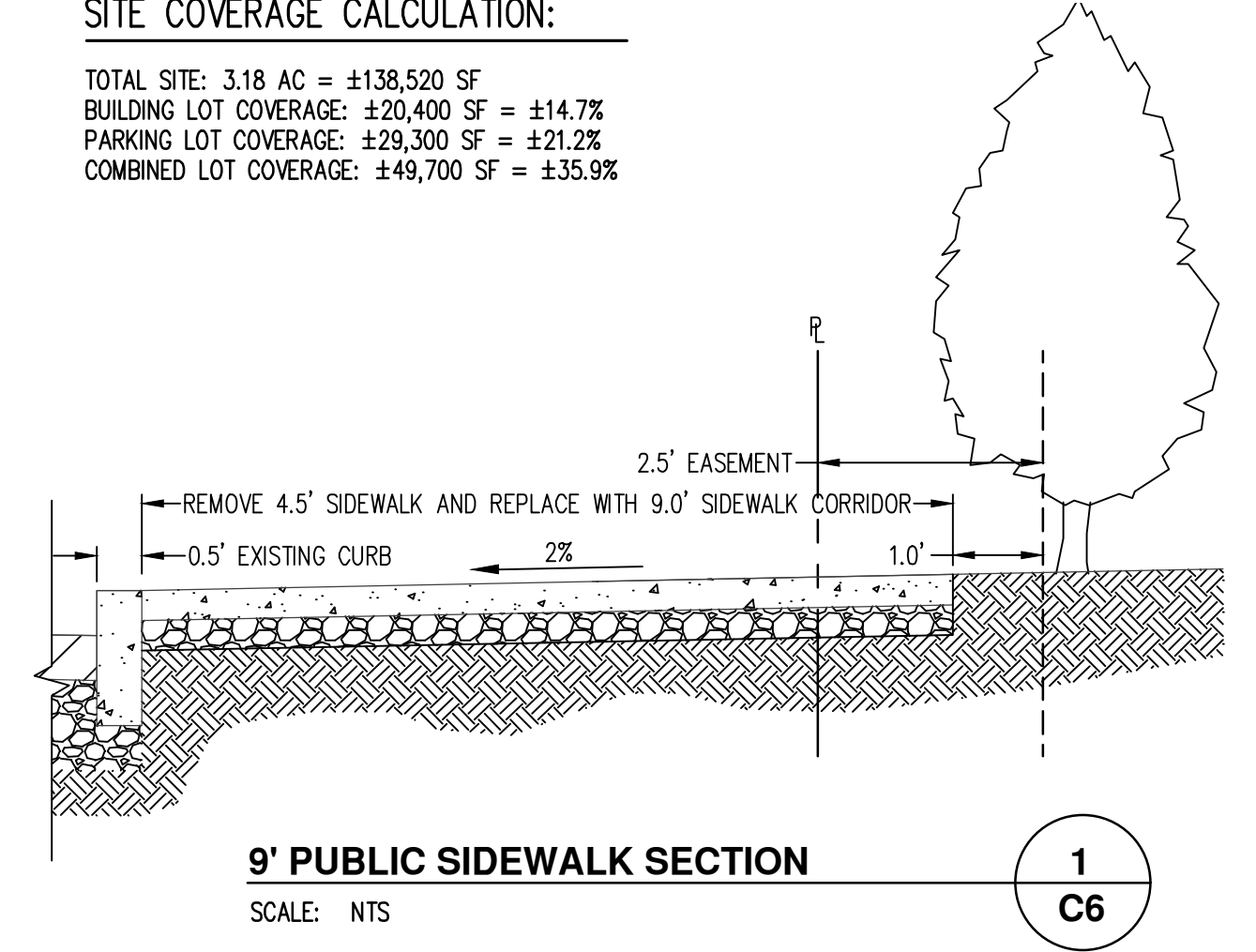
TOTAL SITE: 3.18 AC = ±138,520 SF
 AREA IN SIDEWALK EASEMENT: ±2,700 SF
 AREA IN STREAM CORRIDOR: ±4,520 SF
 AREA OUTSIDE STREAM CORRIDOR AND EASEMENT: ±131,300 SF

EXPECTED MAXIMUM DENSITY: $138,520/3,000 = 46.17 = 46$ UNITS
 DENSITY OUTSIDE OF STREAM CORRIDOR AND EASEMENT: $131,300/3,000 = 43.77 = 43$ UNITS
 MAXIMUM ALLOWED INCREASE IN DENSITY (15.342.120.B.3): $20\% \cdot 43.77 \cdot 1.2 = 52.52$

MAXIMUM ALLOWED DENSITY: 52 UNITS
 PROPOSED UNITS: 42 (PHASE 1)

SITE COVERAGE CALCULATION:

TOTAL SITE: 3.18 AC = ±138,520 SF
 BUILDING LOT COVERAGE: ±20,400 SF = ±14.7%
 PARKING LOT COVERAGE: ±29,300 SF = ±21.2%
 COMBINED LOT COVERAGE: ±49,700 SF = ±35.9%



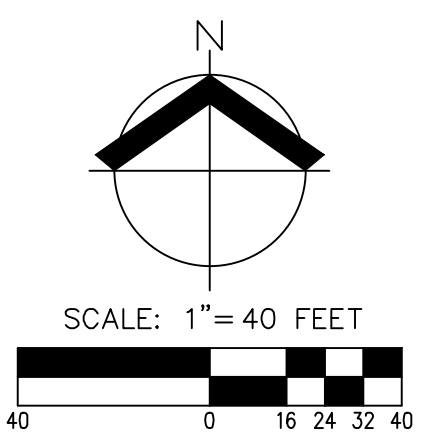
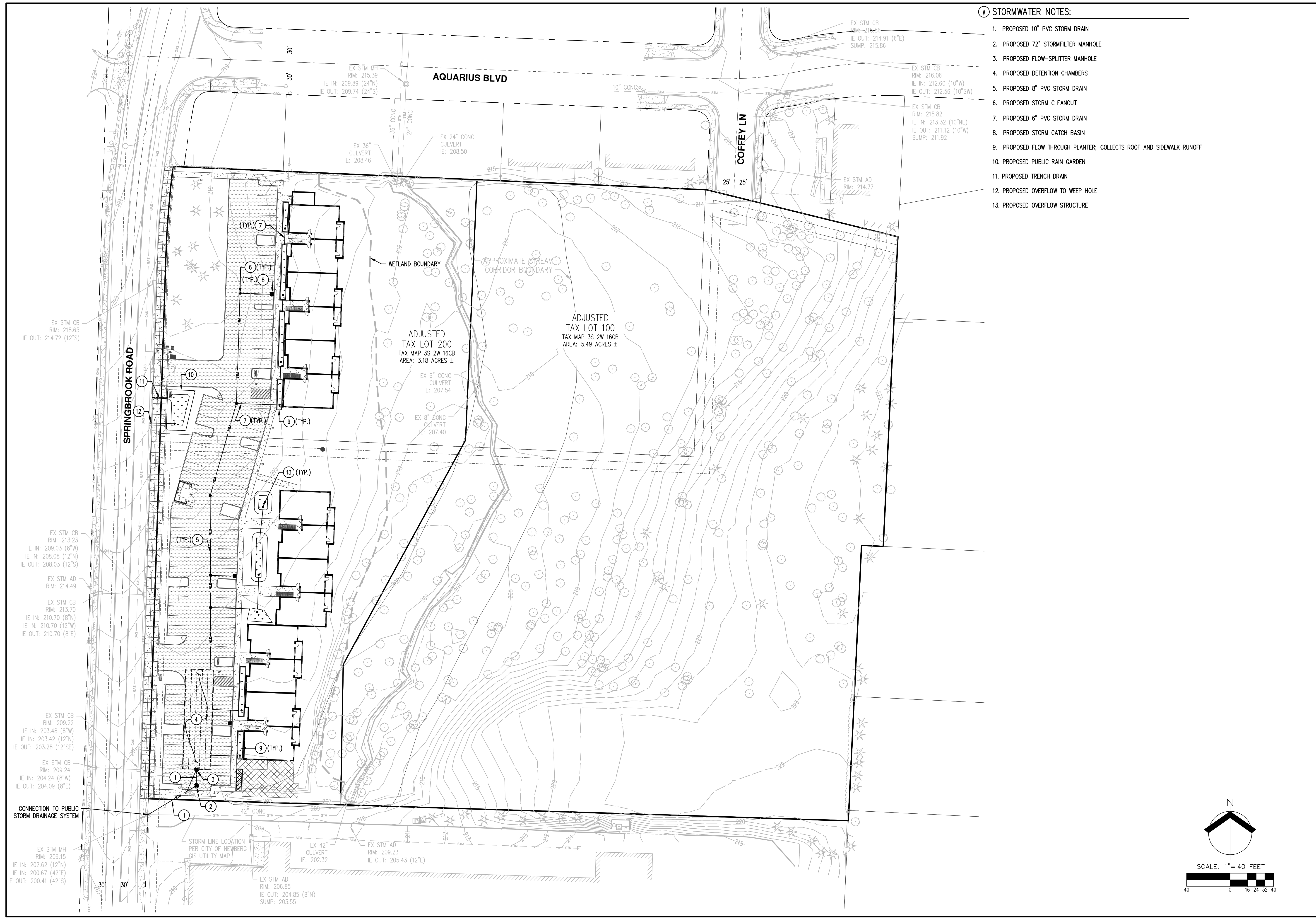
PRELIMINARY STORM DRAINAGE PLAN

DESIGNED BY: CAK
 DRAWN BY: AMC
 CHECKED BY: CEG
 SCALE: AS NOTED
 DATE: 03/30/2018
 REGISTERED PROFESSIONAL ENGINEER
 PRELIMINARY NOT FOR CONSTRUCTION
 EDWARD GREGORY
 RENEWS: JUNE 30, 2019
 REVISIONS:

JOB NUMBER
5797
 SHEET
C7

STORMWATER NOTES:

1. PROPOSED 10" PVC STORM DRAIN
2. PROPOSED 72" STORMFILTER MANHOLE
3. PROPOSED FLOW-SPLITTER MANHOLE
4. PROPOSED DETENTION CHAMBERS
5. PROPOSED 8" PVC STORM DRAIN
6. PROPOSED STORM CLEANOUT
7. PROPOSED 6" PVC STORM DRAIN
8. PROPOSED STORM CATCH BASIN
9. PROPOSED FLOW THROUGH PLANTER; COLLECTS ROOF AND SIDEWALK RUNOFF
10. PROPOSED PUBLIC RAIN GARDEN
11. PROPOSED TRENCH DRAIN
12. PROPOSED OVERFLOW TO WEEP HOLE
13. PROPOSED OVERFLOW STRUCTURE



**PRELIMINARY SANITARY
 SEWER & WATER PLAN**

DESIGNED BY: CAK
 DRAWN BY: AMC
 CHECKED BY: CEG
 SCALE: AS NOTED

DATE: 03/30/2018

REGISTERED PROFESSIONAL
 ENGINEER
PRELIMINARY
 NOT FOR
 CONSTRUCTION
 EDWARD GREGORY
 RENEWS: JUNE 30, 2019

REVISIONS

JOB NUMBER
5797
 SHEET

C8

Ⓢ SANITARY NOTES:

1. PROPOSED SANITARY MANHOLE
2. PROPOSED CONNECTION TO BUILDING; SERVICE LINES TO RUN UNDERNEATH BUILDINGS

Ⓢ WATER NOTES:

1. PROPOSED DOMESTIC WATER METER
2. PROPOSED DOMESTIC DOUBLE CHECK VALVE
3. PROPOSED IRRIGATION DOUBLE CHECK VALVE
4. PROPOSED DOMESTIC CONNECTION TO BUILDING
5. PROPOSED FIRE WATER DOUBLE CHECK DETECTOR ASSEMBLY
6. PROPOSED FIRE DEPARTMENT CONNECTION (FDC)
7. PROPOSED FIRE WATER SERVICE TO BUILDING
8. PROPOSED FIRE HYDRANT

