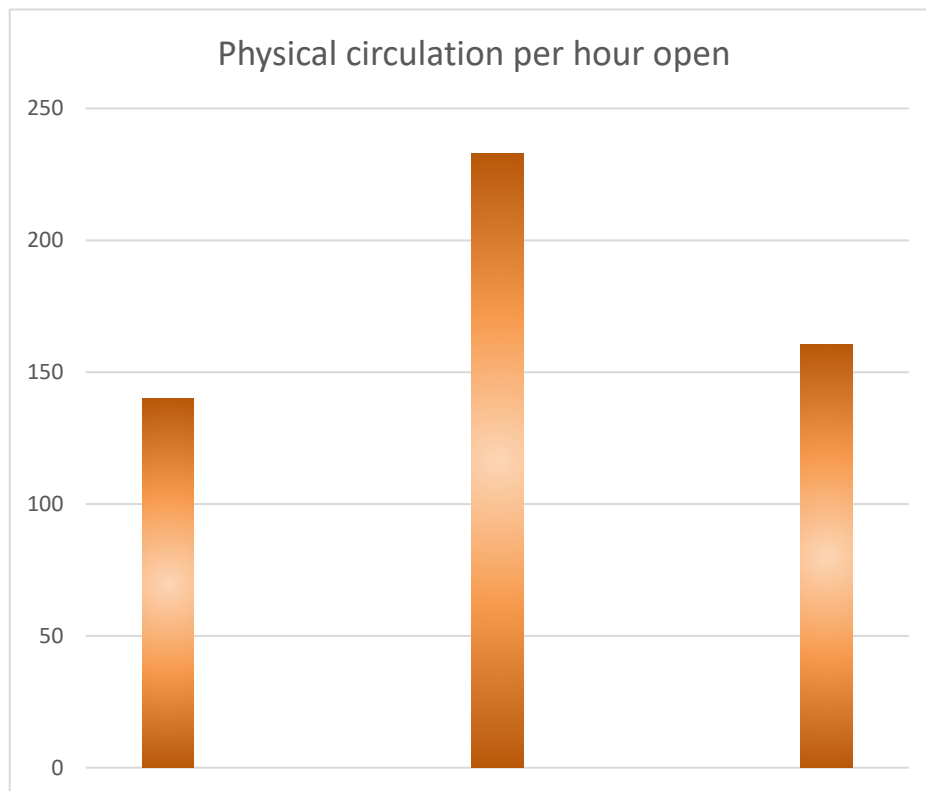


## OPEN HOURS

	YTD	2020-2021	2019-2020
Total open hours:	388	984	1,658

## CIRCULATION

Total physical circulation:	54,294	229,167	265,955
Per hour open	140	233	160

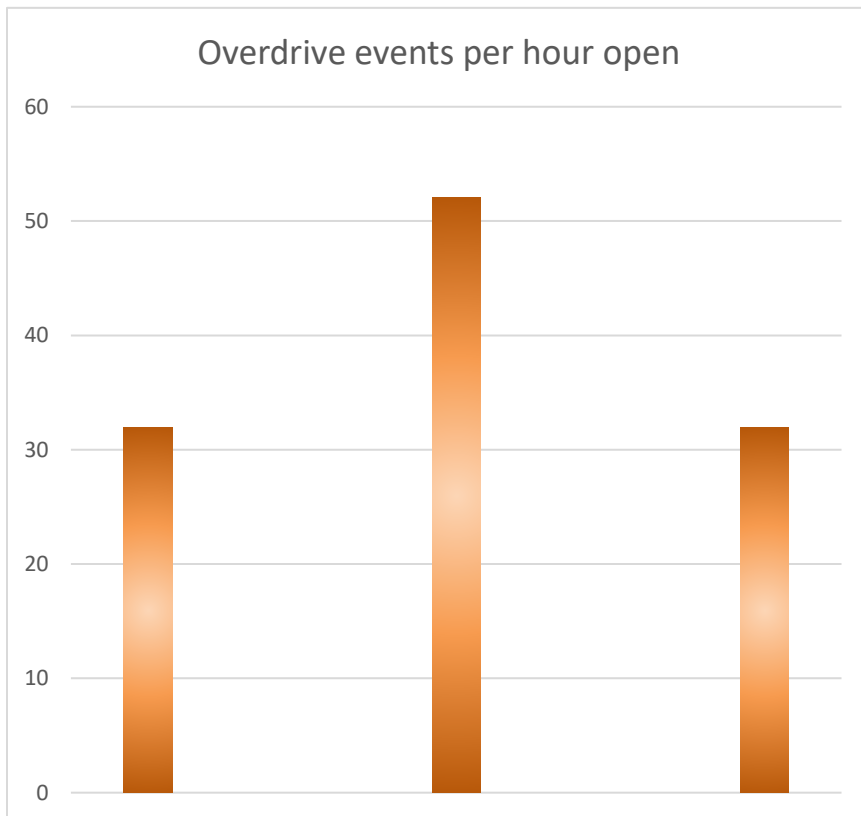


## OPEN HOURS

	YTD	2020-2021	2019-2020
Total open hours:	388	984	1,658

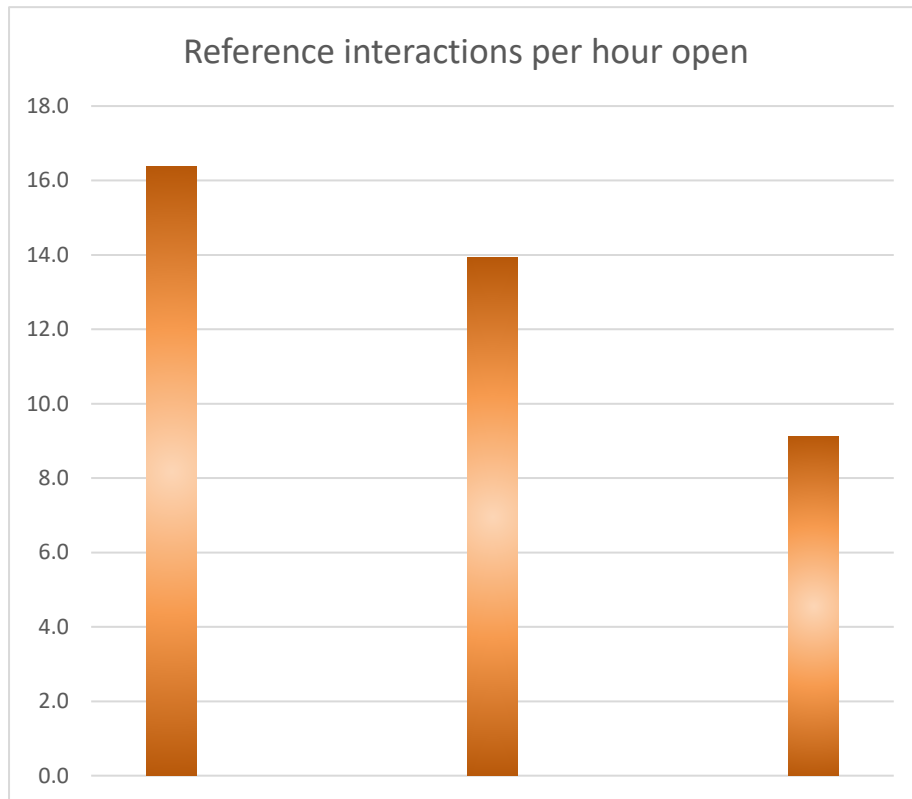
## E CIRCULATION

Total Overdrive events	12,397	51,198	52,907
Per hour open	32	52	32



## OPEN HOURS

	YTD	2020-2021	2019-2020
Total open hours:	388	984	1,658
		<b>REFERENCE</b>	
Questions / patron assists:	6,351	13,711	15,132
Per hour open	16.4	13.9	9.1



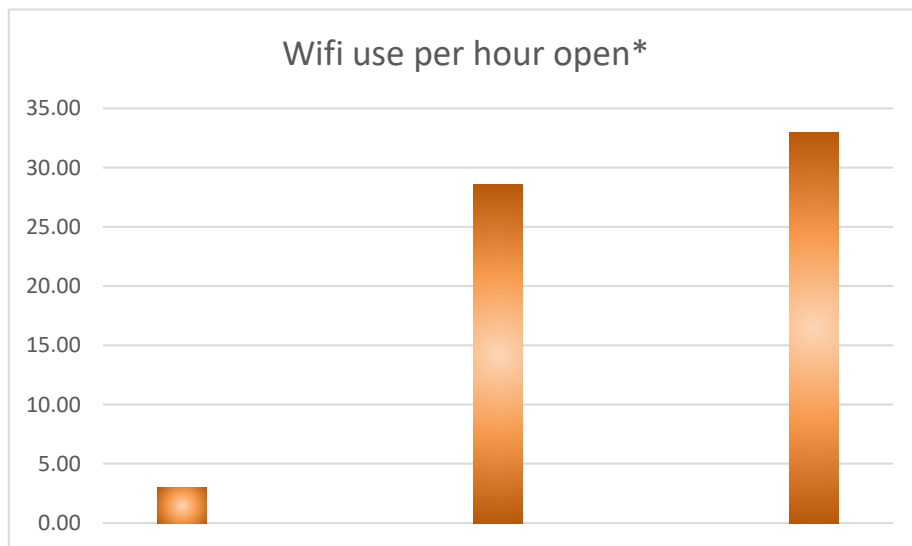
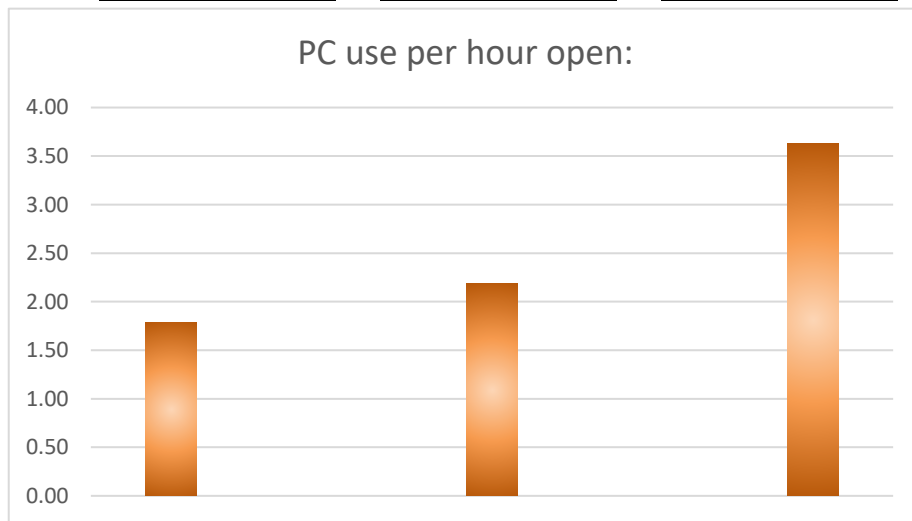
## OPEN HOURS

	YTD	2020-2021	2019-2020
Total open hours:	388	984	1,658

## COMPUTER USE

Wifi usage:	1,154	28,085	54,722
PC Sessions:	694	2,152	6,019

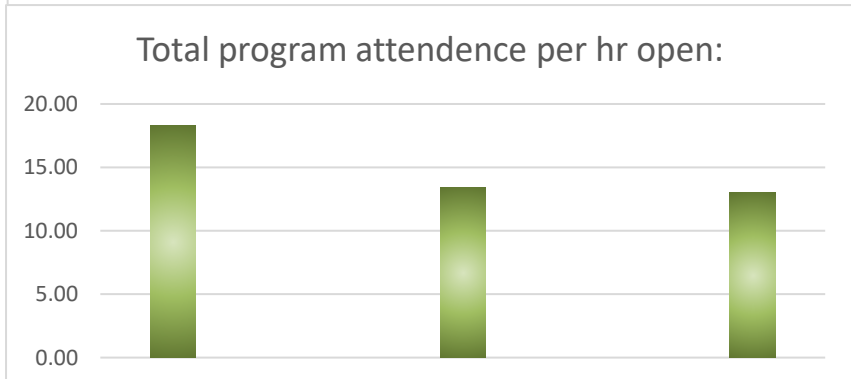
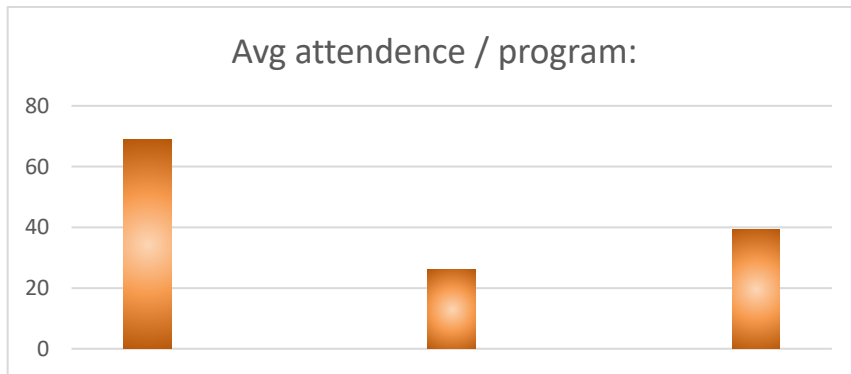
PC use per hour open:	1.79	2.19	3.63
Wifi use per hour open*	2.97	28.54	33.00



\* Use is guests / unique devices.

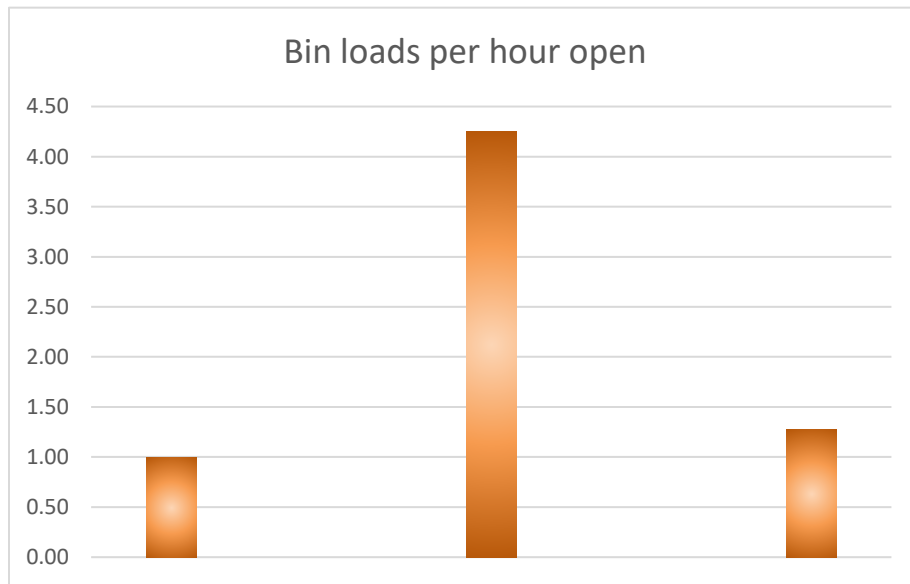
## OPEN HOURS

	YTD	2020-2021	2019-2020
Total open hours:	388	984	1,658
<b>PROGRAMMING STATISTICS</b>			
Adult programs:	20	96	54
Adult attendance:	567	944	796
Teen programs:	33	114	75
Teen attendance:	256	598	1,316
Children's programs:	27	221	353
Children's attendance:	5,543	9,939	18,057
Spanish programs:	23	75	65
Spanish attendance:	730	1,715	1,378
Programs total:	103	506	547
Attendance total:	7,096	13,196	21,547
Avg attendance / program:	69	26	39
Total attendance per hr open:	18.29	13.41	13.00



## OPEN HOURS

	YTD	2020-2021	2019-2020
Total open hours:	388	984	1,658
<b>CHECK-IN ACTIVITY*</b>			
Total bins checked in:	386	4,182	2,107
Per hour open	0.99	4.25	1.27



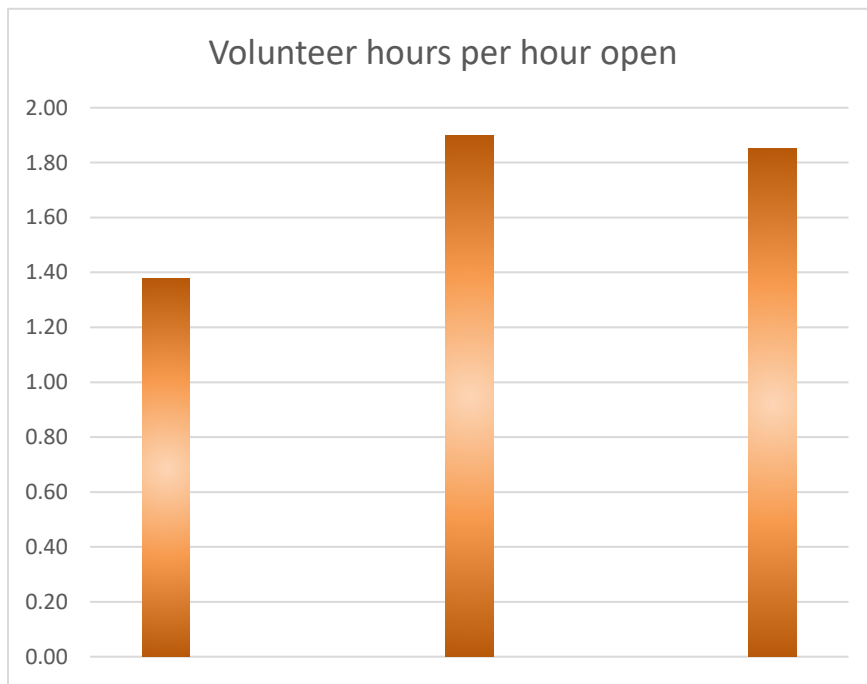
## OPEN HOURS

	YTD	2020-2021	2019-2020
Total open hours:	388	984	1,658

## VOLUNTEERING

Total volunteer hours:	534	1,869	3,068
------------------------	-----	-------	-------

Per hour open	1.38	1.90	1.85
---------------	------	------	------



## OPEN HOURS

	YTD	2020-2021	2019-2020
Total open hours:	388	984	1,658

## VISITS TO THE LIBRARY

Total visits*:	11,866	55,151	191,672
Per hour open	30.58	56.05	115.60

\* For 2018-2019 and before Leah used to "guestimate" this metric these are actual door counter numbers.

