

# Newberg Pavement Projects: 2019

## City Boundaries

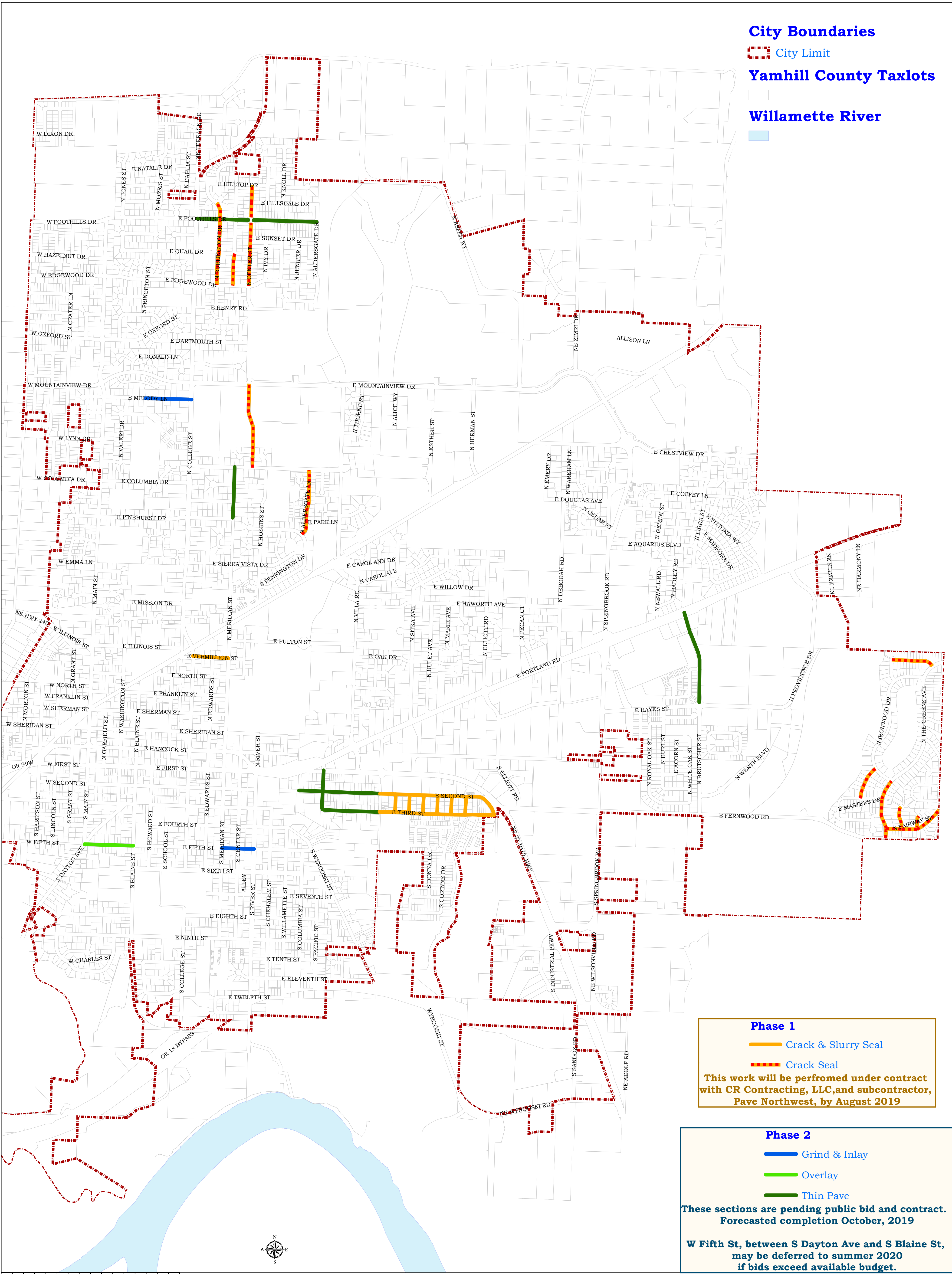
 City Limit

## Yamhill County Taxlots




## Willamette River








### Phase 1

-  Crack & Slurry Seal
-  Crack Seal

**This work will be performed under contract with CR Contracting, LLC, and subcontractor, Pave Northwest, by August 2019**

### Phase 2

-  Grind & Inlay
-  Overlay
-  Thin Pave

**These sections are pending public bid and contract. Forecasted completion October, 2019**

**W Fifth St, between S Dayton Ave and S Blaine St, may be deferred to summer 2020 if bids exceed available budget.**

0 360 720 1,440 2,160 2,880 Feet

1 inch = 720 feet

Coordinate System: NAD 1983 HARN StatePlane Oregon North FIPS 3601 Feet Intl  
 Projection: Lambert Conformal Conic  
 Datum: North American 1983 HARN  
 Standard Parallel 1: 44.3333  
 Standard Parallel 2: 46.0000  
 Latitude Of Origin: 43.6667  
 Units: Foot  
 Document Path: O:\GIS\MapRequest\Paul\Pavement Projects\Newberg Project List - 2019.mxd  
 Date Saved: 5/23/2019 3:07:06 PM  
 Author: Keith McKinnon, GIS Analyst

IMPORTANT NOTICE TO ALL USERS:  
 DISCLAIMER AND LIMITATION OF LIABILITY  
 This information is not guaranteed to be accurate and may contain errors and omissions.  
 The City of Newberg provides  
 NO WARRANTY AS TO THE MERCHANTABILITY OR FITNESS FOR A PARTICULAR PURPOSE FOR ANY INFROM  
 This map is created from various data sources and is subject to change without notice. This map is intended for general

