

THIS MAP WAS PREPARED FOR
ASSESSMENT PURPOSE ONLY

SECTION 17 T3S R2W W.M.
YAMHILL COUNTY

1" = 100'

SEE MAP 3 2 08

3 2 17
& INDEX
NEWBERG

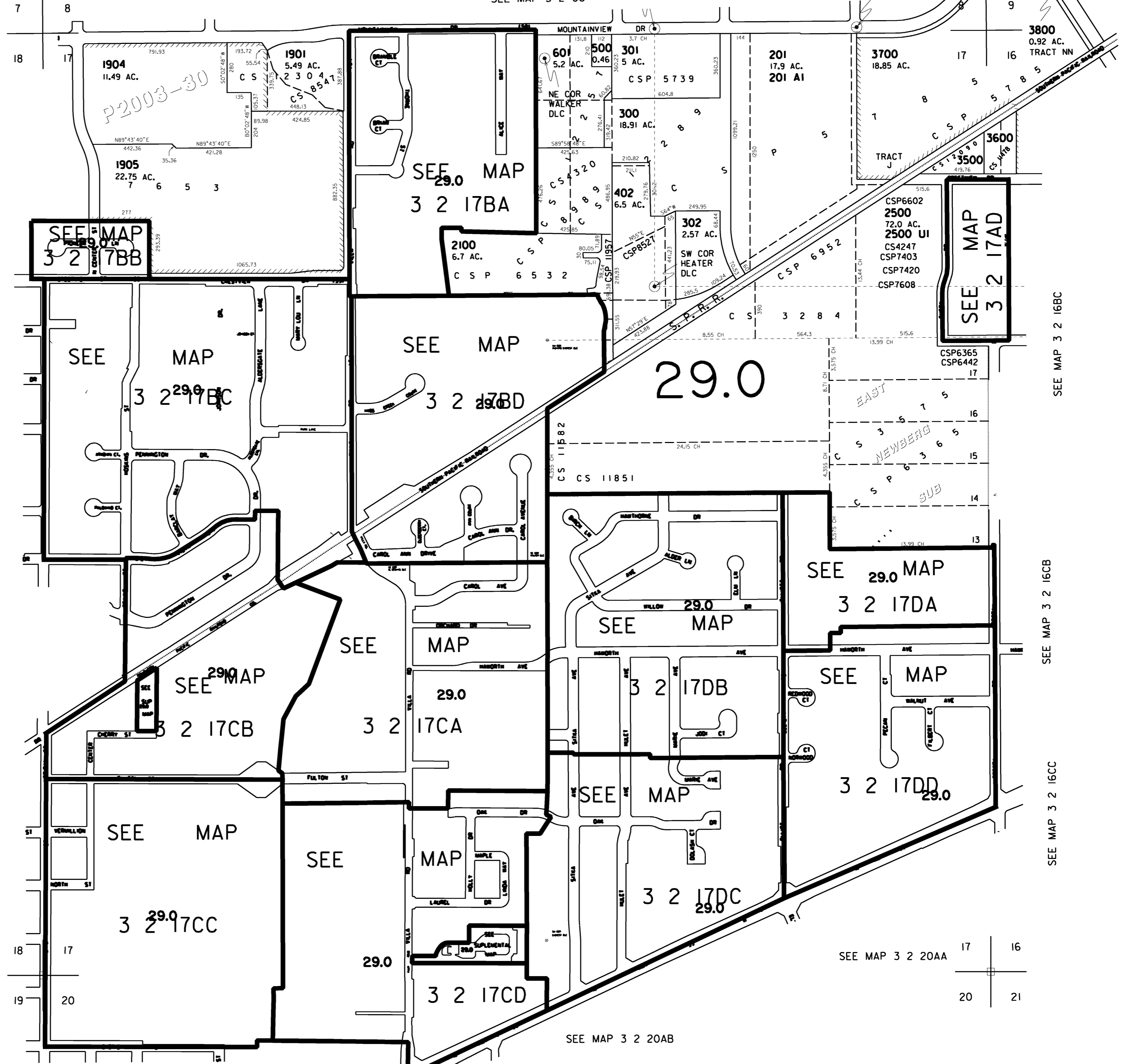
CANCELLED

SEE MAP 3 2 18AA

SEE MAP 3 2 18AD

SEE MAP 3 2 18DA

SEE MAP 3 2 18DD



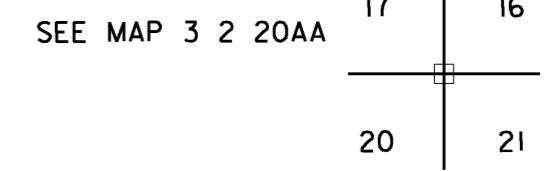
- 100
- 200
- 303
- 304
- 305
- 306
- 307
- 400
- 401
- 403
- 404
- 405
- 700
- 800
- 900
- 1000
- 1100
- 1200
- 1201
- 1202
- 1300
- 1400
- 1500
- 1600
- 1700
- 1800
- 1801
- 1802
- 1803
- 1804
- 1900
- 1902
- 1903
- 2000
- 2101
- 2102
- 2103
- 2104
- 2105
- 2200
- 2300
- 2301
- 2302
- 2400
- 2401
- 2600
- 2601
- 2602
- 2700
- 2800
- 2900
- 3000
- 3001
- 3002
- 3003
- 3004
- 3100
- 3200
- 3300
- 3301
- 3302
- 3303
- 3304
- 3305
- 3306
- 3400
- 3700

REVISED 5-16-12 SB

SEE MAP 3 2 20BB

SEE MAP 3 2 20BA

SEE MAP 3 2 20AB



3 2 17