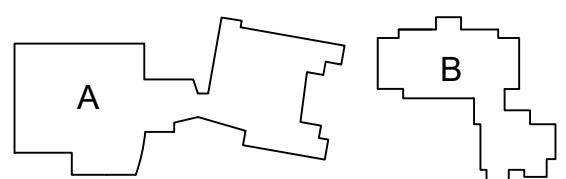


NOT FOR CONSTRUCTION



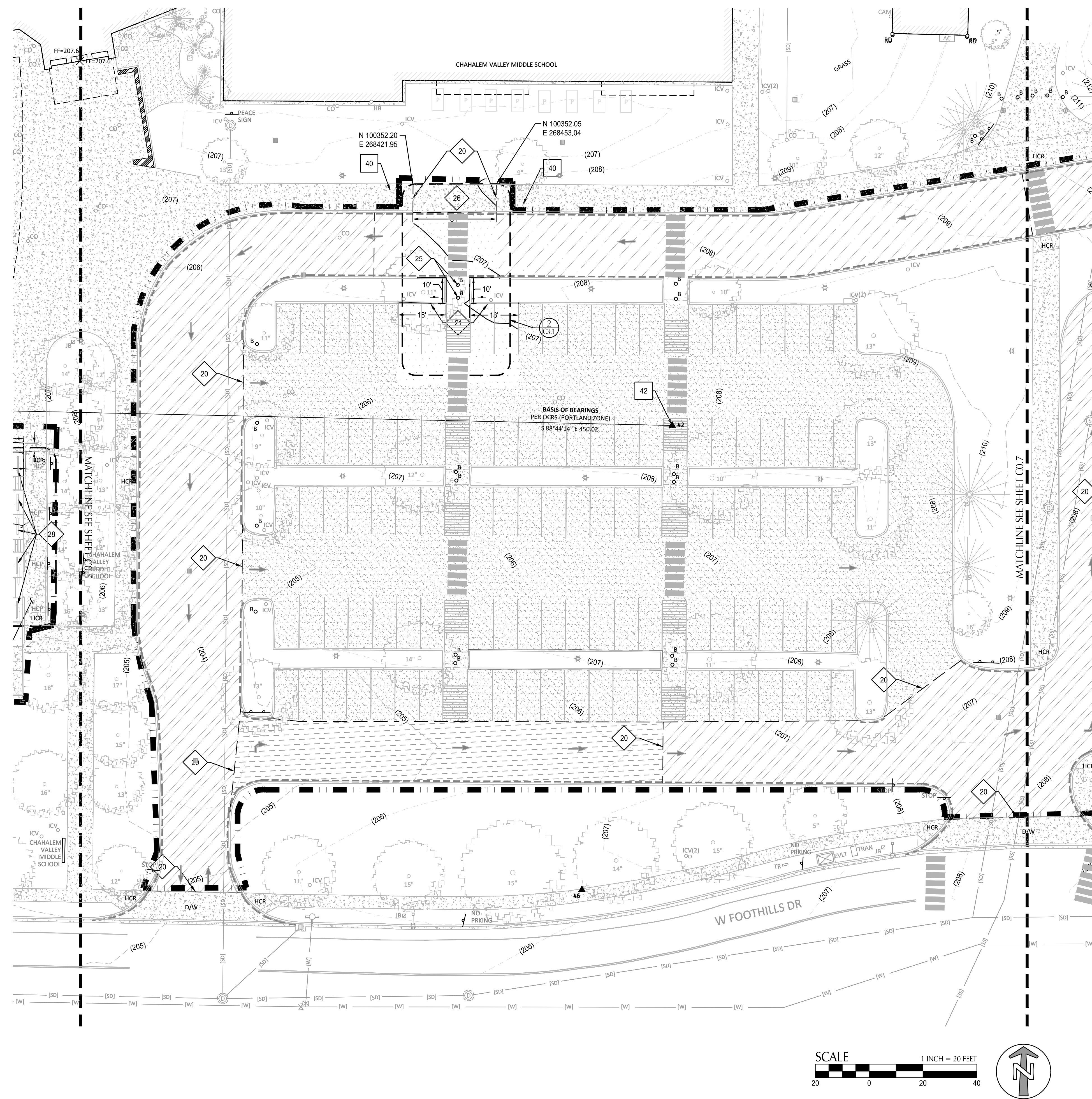
key plan

revisions	

phase SD
date 09/23/21
project 21007

DEMO & EXISTING
CONDITIONS PLAN

C1.4



SHEET NOTES

- CONTRACTOR MAY STAGE WITHIN LIMITS OF DEMOLITION.
- REMOVE ALL SITE COMPONENTS AND RECYCLE COMPONENTS AS REQUIRED IN THE SPECIFICATIONS.
- GENERAL DEMOLITION PERMIT SHALL BE SECURED BY THE CONTRACTOR.
- ALL TRADE LICENSES AND PERMITS NECESSARY FOR THE PROCUREMENT AND COMPLETION OF THE WORK SHALL BE SECURED BY THE CONTRACTOR PRIOR TO COMMENCING DEMOLITION.
- PROTECT ALL ITEMS ON ADJACENT PROPERTIES AND IN THE RIGHT OF WAY INCLUDING BUT NOT LIMITED TO SIGNAL EQUIPMENT, PARKING METERS, SIDEWALKS, STREET TREES, STREET LIGHTS, CURBS, PAVEMENT AND SIGNS. CONTRACTOR SHALL BE RESPONSIBLE FOR RESTORING ANY DAMAGED ITEMS TO ORIGINAL CONDITION.
- PROTECT STRUCTURES, UTILITIES, SIDEWALKS, AND OTHER FACILITIES IMMEDIATELY ADJACENT TO EXCAVATIONS FROM DAMAGES CAUSED BY SETTLEMENT, LATERAL MOVEMENT, UNDERMINING, WASHOUT AND OTHER HAZARDS.
- SAWCUT STRAIGHT LINES IN SIDEWALK, AS NECESSARY.
- CONTRACTOR IS RESPONSIBLE TO CONTROL DUST AND MUD DURING THE DEMOLITION PERIOD, AND DURING TRANSPORTATION OF DEMOLITION DEBRIS. ALL STREET SURFACES OUTSIDE THE CONSTRUCTION ZONE MUST BE KEPT CLEAN.
- SEE SHEET C0.5 FOR EXISTING CONDITION NOTES

DEMOLITION KEY NOTES

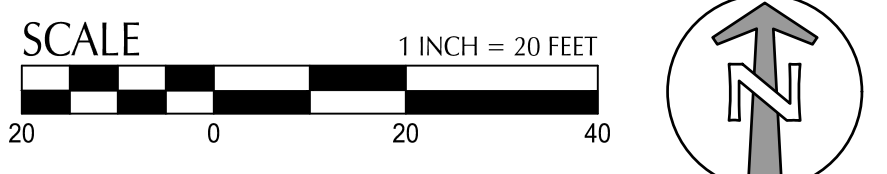
- SAWCUT LINE
- REMOVE CONCRETE CURB.
- REMOVE CONCRETE SIDEWALK. SEE ENLARGEMENTS (C3.X) FOR LIMITS
- REMOVE CONCRETE ADA RAMP
- REMOVE LANDSCAPING. SEE ENLARGEMENTS (C3.X) FOR LIMITS
- REMOVE BOLLARD
- REMOVE CONCRETE CURB AND SIDEWALK.
- REMOVE AND REPLACE ADA STRIPING AND SIGNAGE
- REMOVE AND REPLACE WHEEL STOP

PROTECTION KEY NOTES

- PROTECT CURB AND/OR SIDEWALK.
- PROTECT LANDSCAPING
- PROTECT/RECONSTRUCT MONUMENTATION.

SHEET LEGEND

- DEMOLITION/WORK LIMITS (SHOWN OFFSET FOR CLARITY)
- SAWCUT LINE
- REMOVE TREE
- EXISTING CONTOURS MINOR
- EXISTING CONTOURS MAJOR
- FULL-DEPTH RECONSTRUCTION (LOW TRAFFIC)
- FULL-DEPTH RECONSTRUCTION (HIGH TRAFFIC)
- 4" PARTIAL DEPTH RECONSTRUCTION
- 4.5" PARTIAL-DEPTH RECONSTRUCTION
- 2" MILL-AND-INLAY PAVING
- ADD ALTERNATE #1
512 SQFT



NOTES:

- VERTICAL DATUM: NAVD 88 (CGO10 12A)
ELEVATION WAS ESTABLISHED THROUGH A GPS OBSERVATION ON CONTROL POINT NO. 1 USING THE OREGON REAL-TIME GPS NETWORK (ORGN). ELEVATION = 205.96'
- BASIS OF BEARINGS FOR THIS SURVEY IS THE OREGON COORDINATE REFERENCE SYSTEM (OCRS), PORTLAND ZONE. THE RESULTANT BEARING BETWEEN CONTROL POINT #7 AND CONTROL POINT #8 IS NORTH 89°07'42" WEST, 292.26'.
- THIS MAP DOES NOT REPRESENT A BOUNDARY SURVEY. A TITLE REPORT WAS NOT PROVIDED FOR THE PURPOSE OF THIS SURVEY. EASEMENTS AFFECTING THE SUBJECT PROPERTY MAY EXIST.
- UTILITY LOCATIONS SHOWN ARE PER FIELD LOCATED UTILITY PAINT MARKS & REFERENCE MAPS MADE AVAILABLE BY THE VARIOUS UTILITY PROVIDERS. UNLESS INDICATED, DEPTHS OF UTILITY LINES ARE NOT AVAILABLE. ALL UTILITY LOCATIONS SHOULD BE FIELD VERIFIED (POTHOLED) PRIOR TO CONSTRUCTION.

LEGEND:

- BUILDING OUTLINE WITH DOOR
- CONCRETE SURFACE
- GRAVEL SURFACE
- ASPHALT SURFACE
- WALL
- BUILDING OVERHANG
- CURB LINE
- EDGE OF ASPHALT
- CYCLONE FENCE LINE
- WOODEN FENCE LINE
- RIGHT-OF-WAY LINE
- EASEMENT LINE
- LOT LINE
- PROPERTY LINE
- ELECTRICAL LINE
- STORM LINE
- SANITARY SEWER LINE
- WATER LINE
- GAS LINE
- UNDERGROUND LINE PER AS-BUILTS
- SIGN
- DOUBLE POST SIGN
- BOLLARD
- FLAG POLE
- DRIVEWAY ENTRY
- HANDICAP RAMP
- BIKE RACK
- ROOF DRAIN
- MAILBOX
- ELECTRICAL JUNCTION BOX
- ELECTRICAL METER
- ELECTRICAL RISER
- ELECTRICAL VAULT
- TRANSFORMER
- GENERATOR
- ELECTRICAL SWITCH
- SECURITY CAMERA
- LUMINAIRE
- OVERHEAD LIGHT
- POWER POLE/OVERHEAD LIGHT
- GAS METER
- GAS VALVE
- SANITARY MANHOLE WITH STRUCTURE
- STORM MANHOLE WITH STRUCTURE
- CATCH BASIN
- AREA DRAIN
- TRENCH DRAIN
- SANITARY/STORM CLEAN OUT
- TELECOMMUNICATIONS VAULT
- TELECOMMUNICATIONS RISER
- WATER VALVE
- FIRE HYDRANT
- STANDPIPE
- WATER METER
- WATER VAULT
- HOSE BIB
- IRRIGATION CONTROL VALVE
- PLANTER BOX
- DECIDUOUS TREE
- PERIMETER REPRESENTS DRIPLINE
- CONIFEROUS TREE
- PERIMETER REPRESENTS DRIPLINE
- FOUND MONUMENT
- PROJECT CONTROL POINT
- FINISHED FLOOR ELEVATION
- COLUMN

STORM TABLE:

- CATCH BASIN
RIM = 205.88'
UNABLE TO MEASURE
FULL OF DEBRIS
- CATCH BASIN (SUMP TYPE)
RIM = 206.52'
WATER LEVEL = 205.47'
- CATCH BASIN
RIM = 204.83'
IE 8" (N) = 213.25'
IE 8" (OUT) (SW) = 203.48'
- CATCH BASIN
RIM = 214.55'
IE 8" (N) = 213.25'
IE 8" (OUT) (SW) = 213.15'
- CATCH BASIN
RIM = 214.36'
IE 8" (N) = 213.00'
IE 8" (OUT) (SW) = 212.96'
- CATCH BASIN (SUMP TYPE)
RIM = 216.64'
WATER LEVEL = 214.69'
- STORM MANHOLE
RIM = 218.30'
UNABLE TO MEASURE
CAR PARKED OVER STRUCTURE

PROJECT CONTROL:

STATION	DESCRIPTION	NORTHING	EASTING	ELEVATION
1	MAG NAIL W/ WASHER "KPPF CONTROL"	100272.30	268068.55	206.01'
2	MAG NAIL W/ WASHER "KPPF CONTROL"	100262.38	268518.46	207.82'
3	MAG NAIL W/ WASHER "KPPF CONTROL"	100390.08	268789.90	215.64'
4	MAG NAIL W/ WASHER "KPPF CONTROL"	100286.61	268930.14	216.03'
5	MAG NAIL W/ WASHER "KPPF CONTROL"	100114.01	268917.35	215.03'
6	MAG NAIL W/ WASHER "KPPF CONTROL"	100989.72	268484.88	206.64'
7	HUB & TAC	100602.25	268607.74	213.61'
8	MAG NAIL W/ WASHER "KPPF CONTROL"	100611.80	268315.63	209.10'
9	MAG NAIL W/ WASHER "KPPF CONTROL"	100561.40	268037.99	206.77'
10	HUB & TAC	100277.11	269292.92	223.80'
11	HUB & TAC	100436.70	269258.82	227.10'
12	HUB & TAC	100620.84	268930.29	221.34'