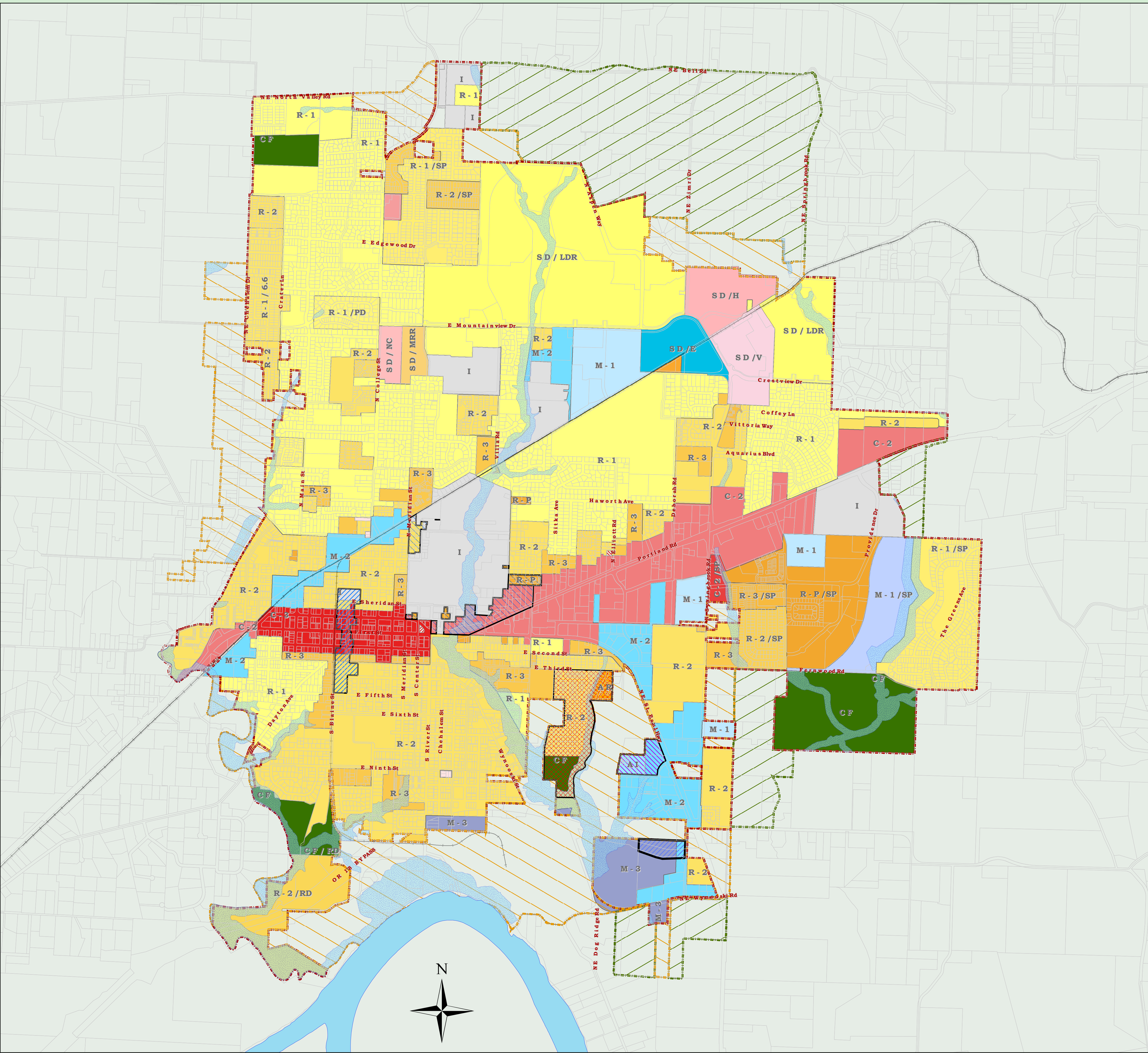


City of Newberg, Oregon

ZONING MAP

Including the Urban Growth Boundary



Residential Zoning

- | | |
|---|---|
| R-1 Low Density Residential | R-2/SP Specific Plan |
| SD/LDR Springbrook District - Low Density Residential | SD/MRR Springbrook District - Mid-Rise Residential |
| R-1/PD Planned Unit Development | R-3 High Density Residential |
| R-1/0.1 Low Density 0.1 d.u./ac. | R-3 PD Planned Unit Development |
| R-1/0.4 Low Density 0.4 d.u./ac. | R-3/SP Specific Plan |
| R-1/6.6 Low Density 6.6 d.u./ac. | R-P Residential Professional |
| R-1/SP Specific Plan | R-P/SP Specific Plan |
| R-2 Medium Density Residential | R-P/LU Residential Profession - Limited Use Overlay |
| R-2 PD Planned Unit Development | AR Airport Residential |
| R-2/RD Riverfront District | |

Commercial Zoning

- | | |
|--|--|
| C-1 Neighborhood Commercial | C-2/LU Community Commercial/Limited Use |
| SD/V Springbrook District - Village | C-2 PD Planned Unit Development |
| SD/NC Springbrook District - Neighborhood Commercial | C-2/SP Specific Plan |
| SD/H Springbrook District - Hospitality | C-3 Central Business District |
| C-1/SP Specific Plan | C-3/LU Central Business District - Limited Use |
| C-2 Community Commercial | |

Industrial / Other Zoning

- | | |
|--|--|
| CF Community Facility | AI Airport Industrial |
| CF/RD Community Facility Riverfront District | M-2 Light Industrial District |
| I Institutional | SD/E Springbrook District - Employment |
| M-1 Limited Industrial District | M-3 Heavy Industrial District |
| M-1/SP Specific Plan | |

- | | |
|--------------------------------|------------------|
| Interim Industrial Use Overlay | City Limit |
| Airport Industrial Overlay | UGB |
| Airport Residential Overlay | URA |
| Institutional Overlay | Willamette River |
| Civic Corridor Overlay | Streets |
| Stream Corridor | Railroad Tracks |
| | Tax Lot Parcels |

IMPORTANT NOTICE TO ALL USERS:

DISCLAIMER AND LIMITATION OF LIABILITY
 This information is not guaranteed to be accurate and may contain errors and omissions. The City of Newberg provides NO WARRANTY AS TO THE MERCHANTABILITY OR FITNESS FOR A PARTICULAR PURPOSE FOR ANY INFORMATION HEREIN.

This map is created from various data sources and is subject to change without notice. This map is intended for general planning purposes only.

Revised on 5/8/2015
 Keith McKinnon, GIS Analyst
 Public Works Department - Engineering
 Date Saved: 1/22/2020 11:12:48 AM
 Path: O:\Shared\GIS_Eng\GIS_SHARE\PLANNING\Zoning_current.mxd
 The most current edition of this map can be found at www.newbergoregon.gov.

