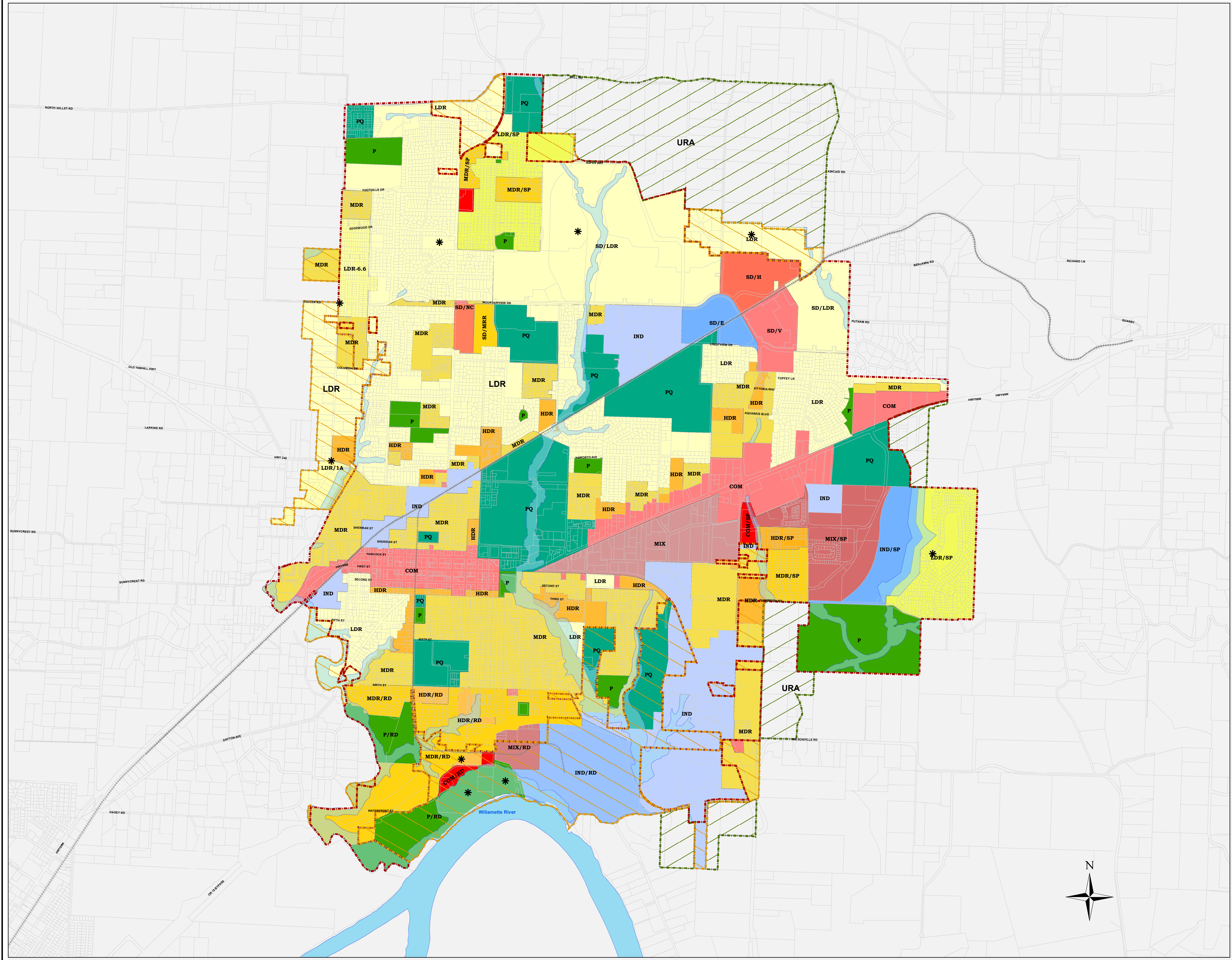


City of Newberg, Oregon

COMPREHENSIVE PLAN MAP Including the Urban Reserve Areas

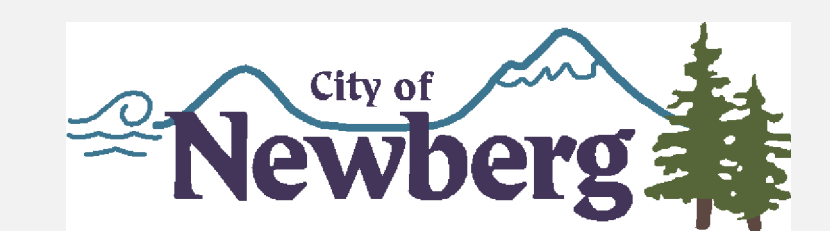
- CF/RD
- COM Commercial
- SD/V Springbrook District - Village
- SD/NC Springbrook District - Neighborhood Commercial
- SD/H Springbrook District - Hospitality
- COM/IRD Commercial Riverfront
- COM/SP Specific Plan
- IND Industrial
- IND/RD Industrial Riverfront
- IND/SP Specific Plan
- SD/E Springbrook District - Employment
- LDR Low Density Residential
- LDR-6.6 Low Density Residential 6.6 d.u./ac
- LDR/1A
- SD/LDR Springbrook District - Low Density Residential
- LDR/RD Low Density Residential Riverfront
- LDR/SP Specific Plan
- MDR Medium Density Residential
- MDR/RD Medium Density Residential Riverfront
- MDR/SP Specific Plan
- SD/MRR Springbrook District - Mid-Rise Residential
- HDR High Density Residential
- HDR/RD
- HDR/SP Specific Plan
- MIX Mixed Use
- MIX/RD Riverfront District
- MIX/SP Specific Plan
- P Parks
- P/RD Parks Riverfront
- PQ Public-Quasi Public
- Stream Corridor
- Current Tax Lots
- City Limit
- UGB
- URA
- Railroad
- * Future Park Site



IMPORTANT NOTICE TO ALL USERS:

DISCLAIMER AND LIMITATION OF LIABILITY
 This information is not guaranteed to be accurate and may contain errors and omissions. The City of Newberg provides NO WARRANTY AS TO THE MERCHANTABILITY OR FITNESS FOR A PARTICULAR PURPOSE FOR ANY INFORMATION HEREIN.

This map is created from various data sources and is subject to change without notice. This map is intended for general planning purposes only.



Revised:
 Keith McKinnon, GIS Analyst
 Date Saved: 1/4/2021 10:43:32 AM
 Path: O:\Shared\GIS_Eng\GIS_SHARE\PLANNING\ComprehensiveMap.mxd
 The most current edition of this map can be found at www.newbergoregon.gov.

