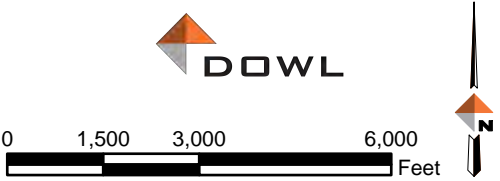
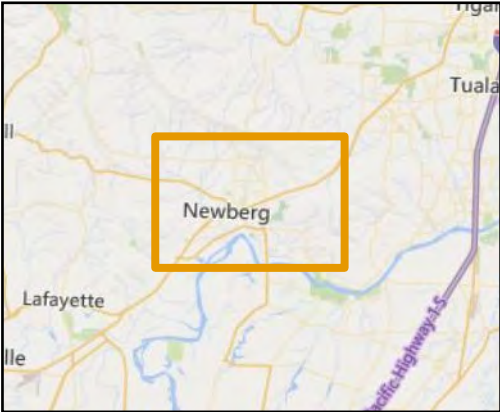
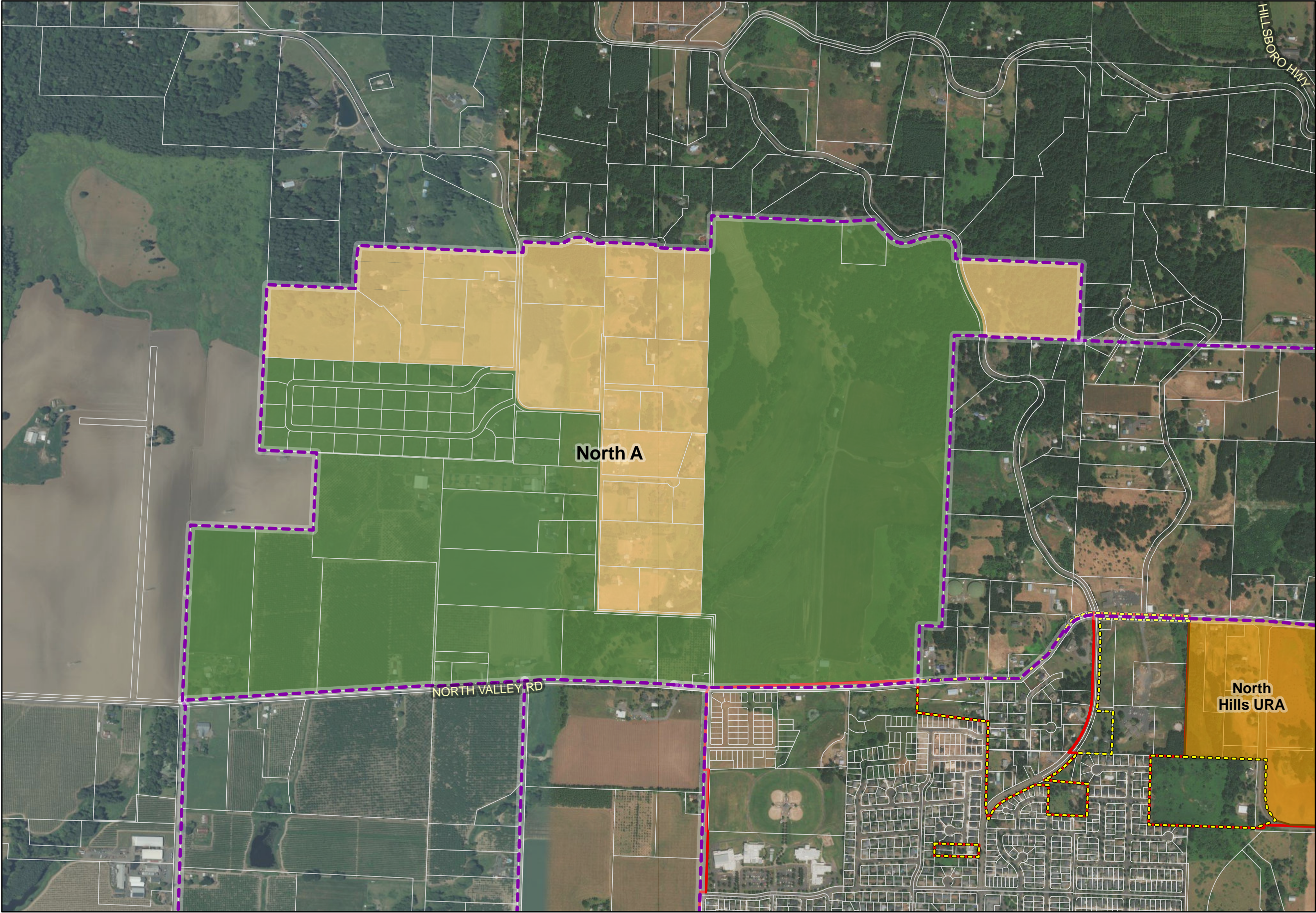









- Legend**
- Study area
 - Exception Areas within Study Area
 - Resource Areas within Study Area
 - Current Urban Reserve Area
 - Urban Growth Boundary
 - Newberg City Boundary
 - Tax Lots

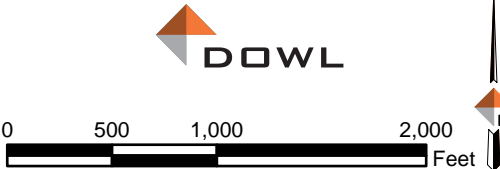
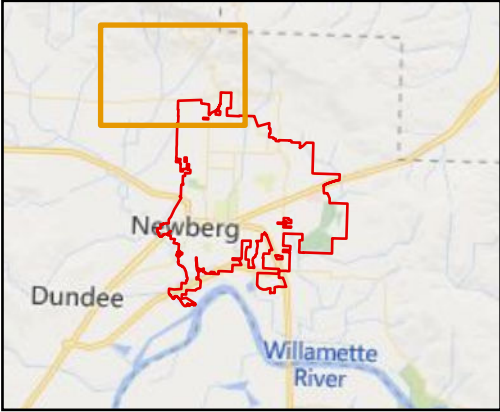


Source: City of Newberg, DOGAMI SLIDO 3.2 database, DOWL calculations, Oregon Spatial Data Library, Oregon Spatial Explorer – statewide FEMA FIRM database, Yamhill County Assessor, Yamhill County Planning & Development; 2020.

Newberg Urban Reserves Area
Map A: Comparative Site Analysis Study Area Map



- Legend**
-  Study area
 -  Exception Areas
 -  Resource Areas
 -  Current Urban Reserve Area
 -  Urban Growth Boundary
 -  Newberg City Boundary
 -  Tax Lots



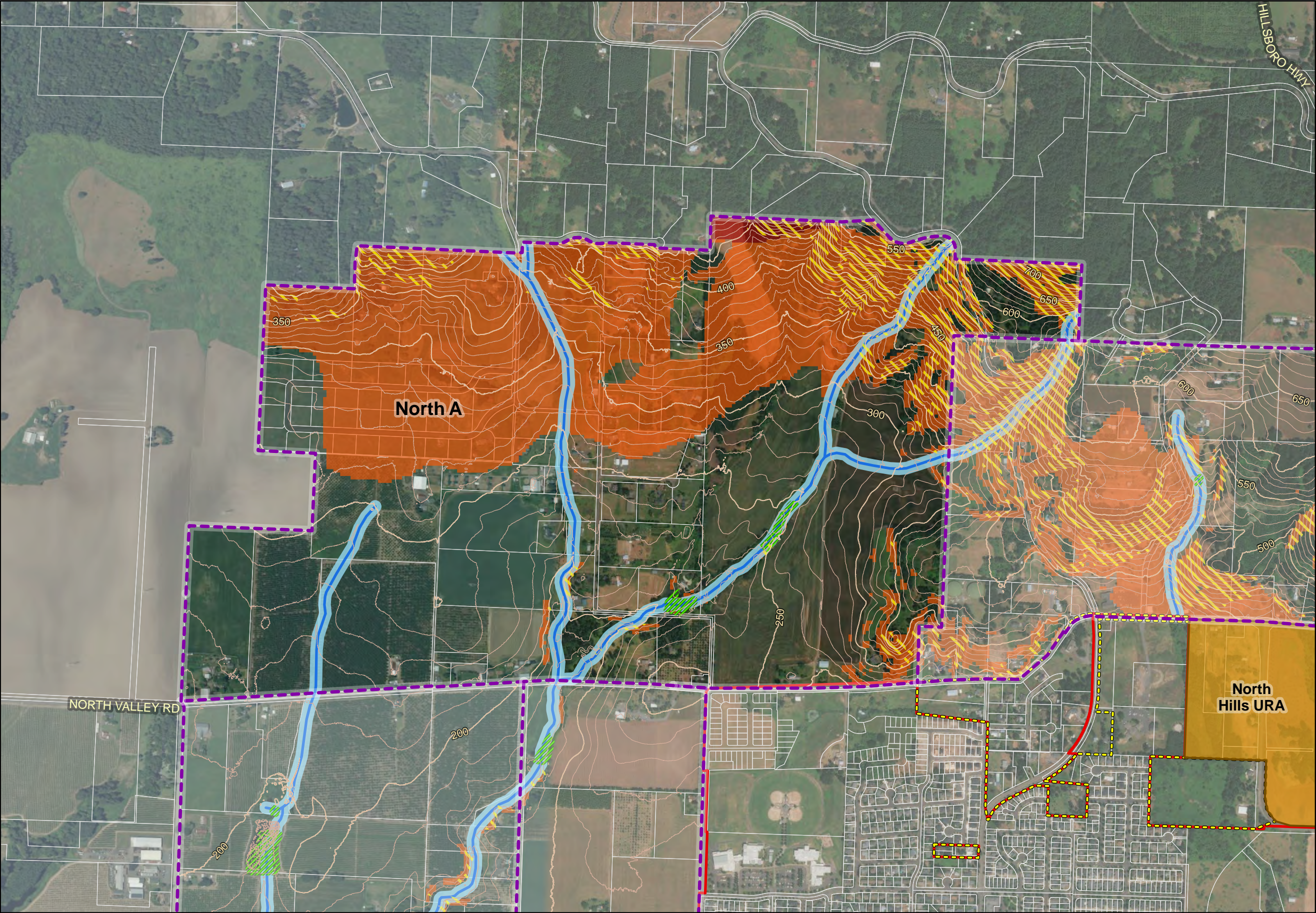
Source: City of Newberg, DOGAMI SLIDO 3.2 database, DOWL calculations, Oregon Spatial Data Library, Oregon Spatial Explorer – statewide FEMA FIRM database, Yamhill County Assessor, Yamhill County Planning & Development; 2020.

Newberg Urban Reserves Area

Map B: North A Subarea Map

Newberg, OR

4/7/2021

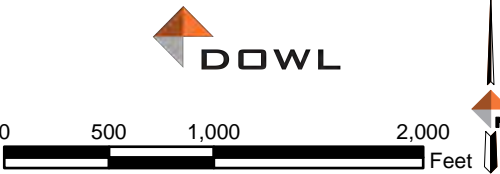
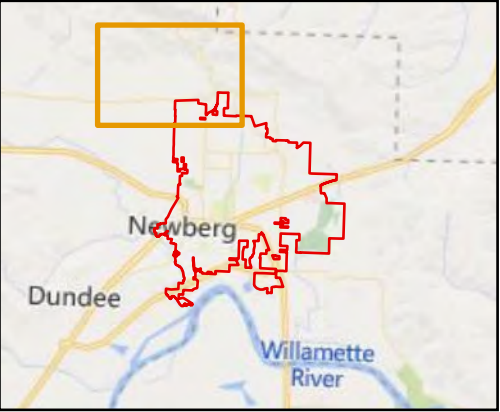


Legend

- Study area
- Current Urban Reserve Area
- Tax Lots
- Urban Growth Boundary
- Newberg City Boundary

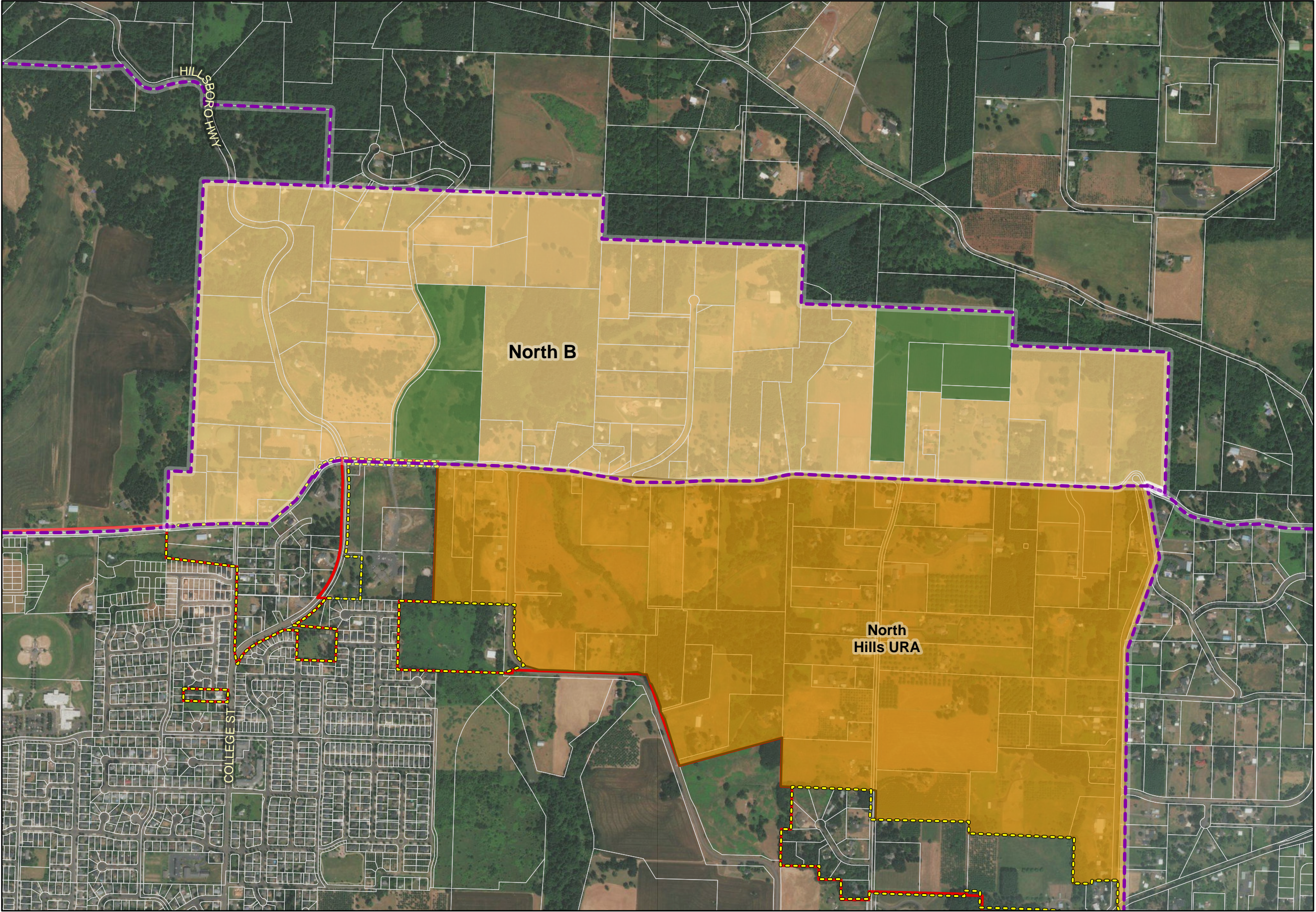
Constraints

- Slopes > 25%
- High Landslide Susceptibility
- Very High Landslide Susceptibility
- Wetlands
- Stream Buffer (60 ft)
- Stream Centerline
- Contours (10 ft)



Source: City of Newberg, DOGAMI SLIDO 3.2 database, DOWL calculations, Oregon Spatial Data Library, Oregon Spatial Explorer – statewide FEMA FIRM database, Yamhill County Assessor, Yamhill County Planning & Development; 2020.

Newberg Urban Reserves Area
Map C: North A Constraints Map

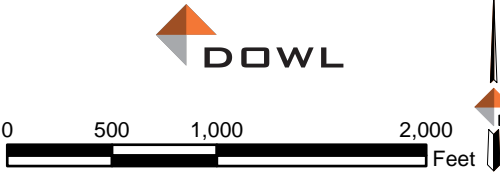
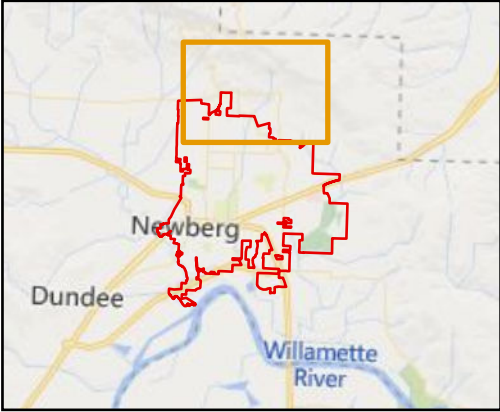


Source: City of Newberg, DOGAMI SLIDO 3.2 database, DOWL calculations, Oregon Spatial Data Library, Oregon Spatial Explorer – statewide FEMA FIRM database, Yamhill County Assessor, Yamhill County Planning & Development; 2020.

Newberg Urban Reserves Area

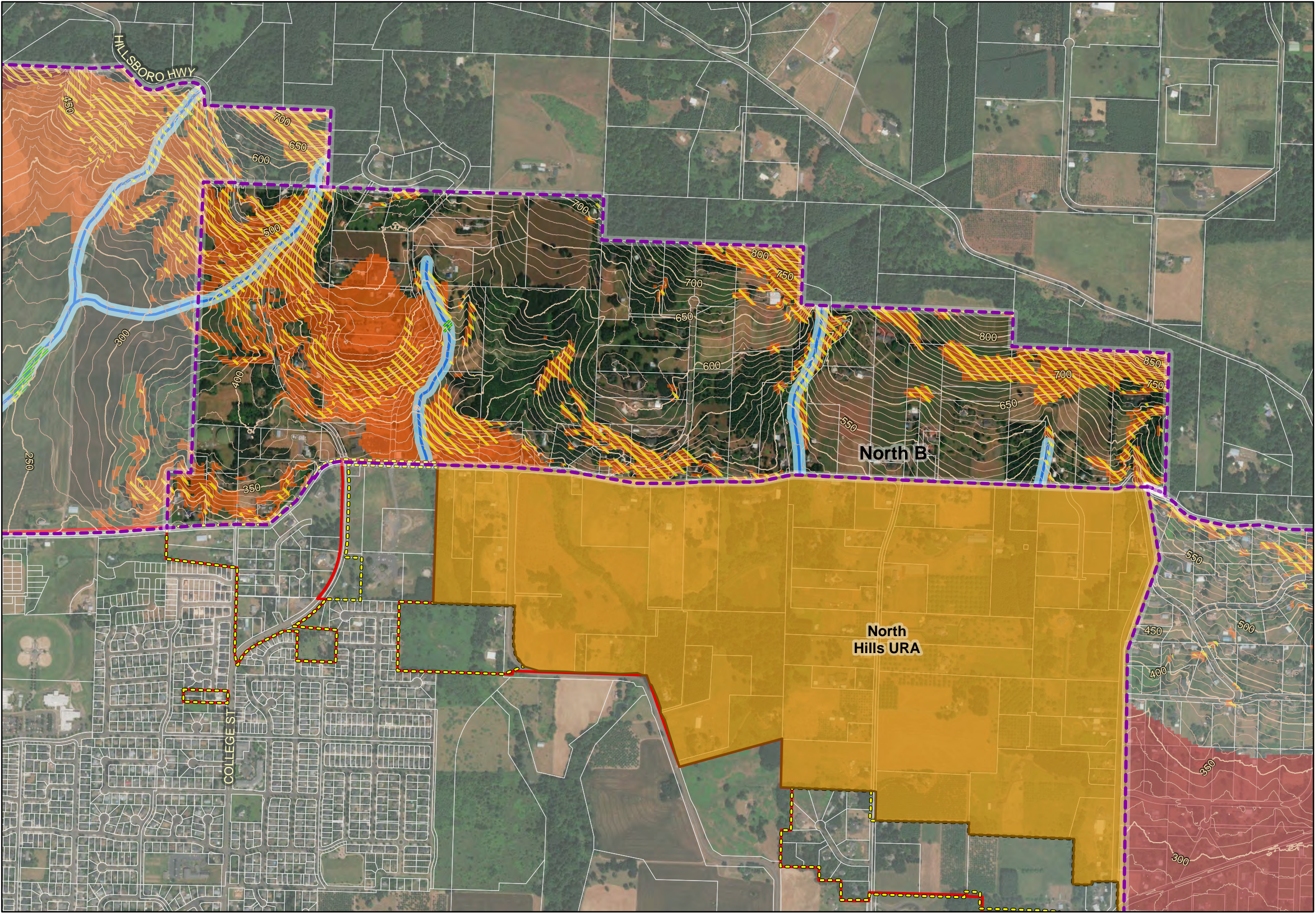
Map D: North B Subarea Map

- Legend**
- Study area
 - Exception Areas
 - Resource Areas
 - Current Urban Reserve Area
 - Urban Growth Boundary
 - Newberg City Boundary
 - Tax Lots



Newberg, OR

4/7/2021

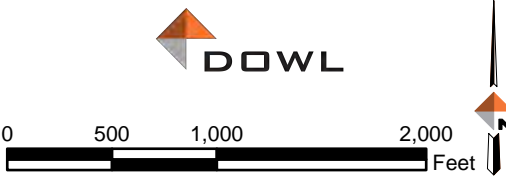
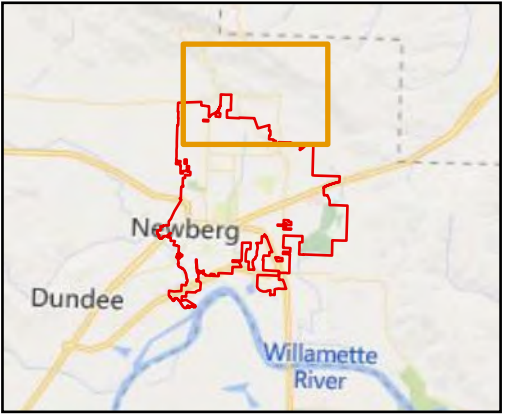


Legend

- Study area
- Current Urban Reserve Area
- Tax Lots
- Urban Growth Boundary
- Newberg City Boundary

Constraints

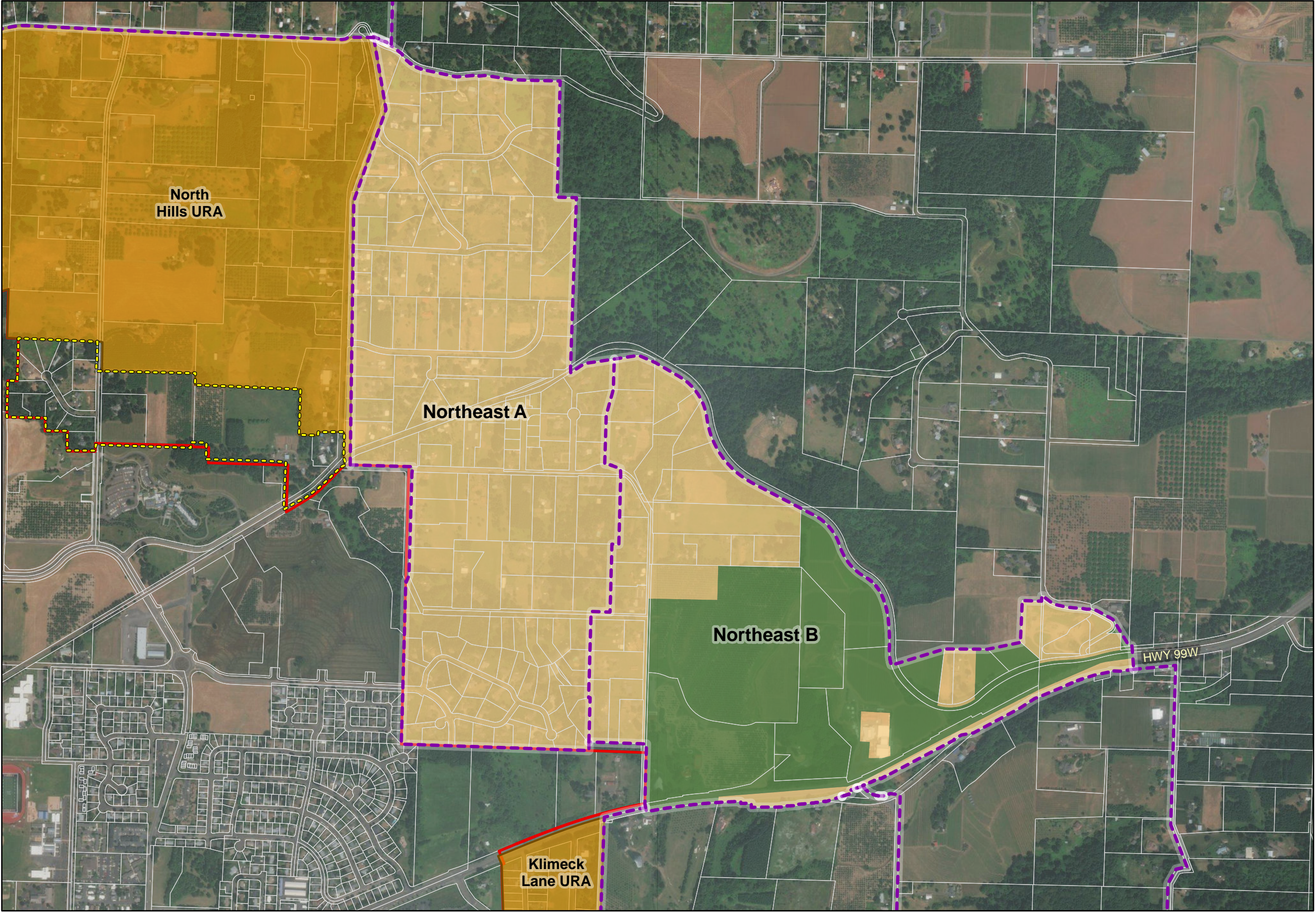
- Slopes > 25%
- High Landslide Susceptibility
- Very High Landslide Susceptibility
- Wetlands
- Stream Buffer (60 ft)
- Stream Centerline
- Contours (10 ft)



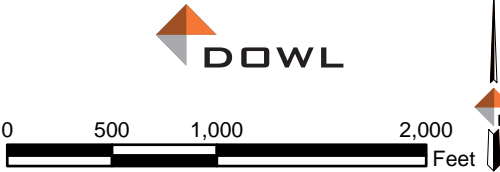
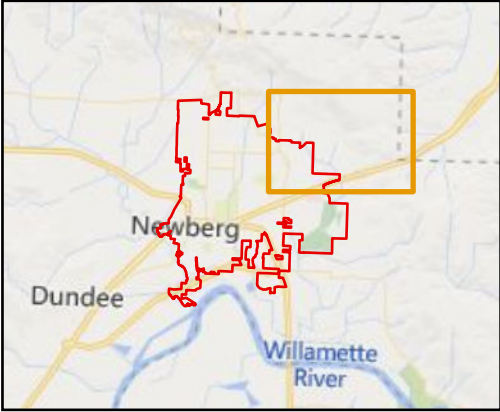
Source: City of Newberg, DOGAMI SLIDO 3.2 database, DOWL calculations, Oregon Spatial Data Library, Oregon Spatial Explorer – statewide FEMA FIRM database, Yamhill County Assessor, Yamhill County Planning & Development; 2020.

Newberg Urban Reserves Area

Map E: North B Constraints Map

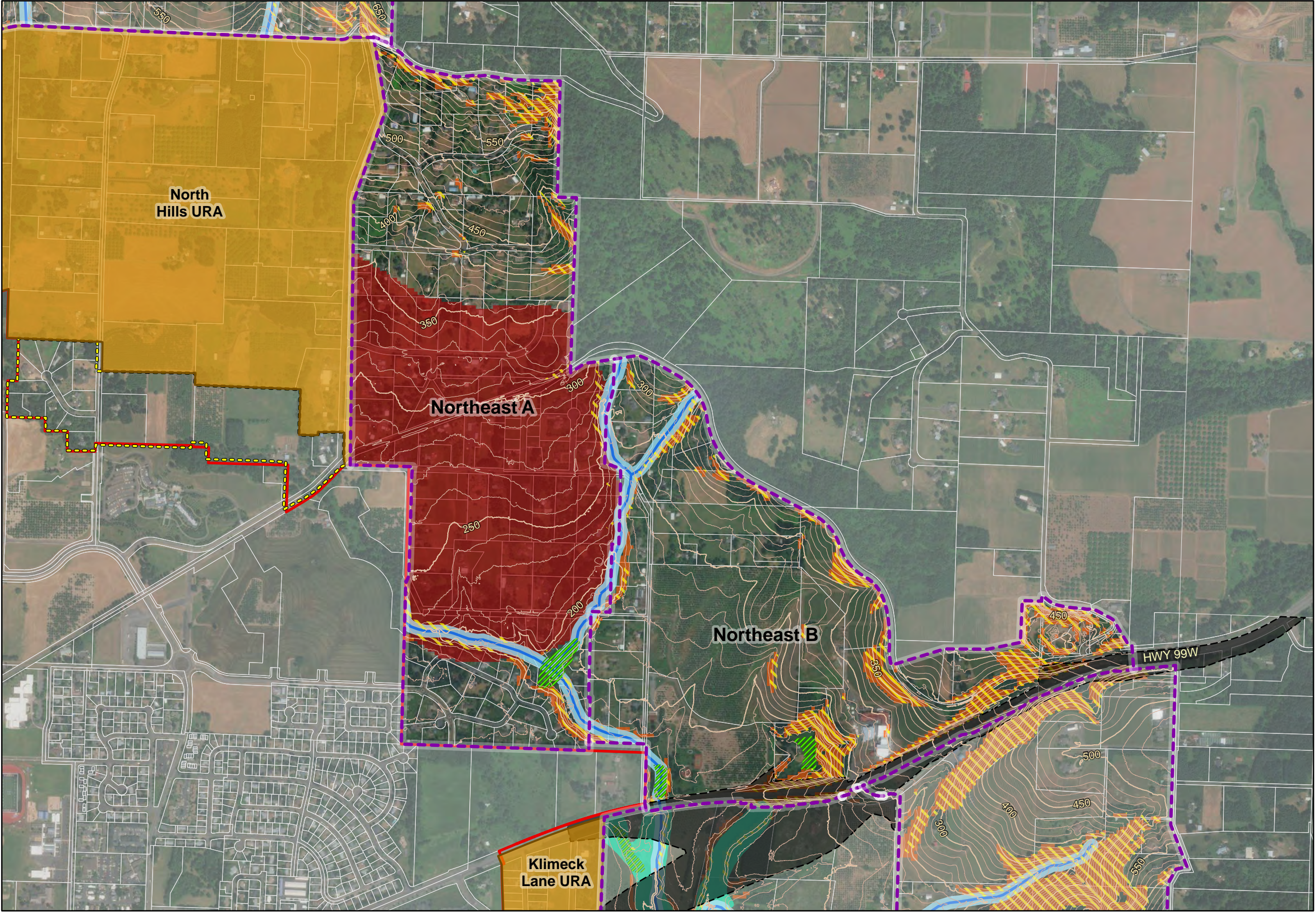


- Legend**
- Study area
 - Exception Areas
 - Resource Areas
 - Current Urban Reserve Area
 - Urban Growth Boundary
 - Newberg City Boundary
 - Tax Lots

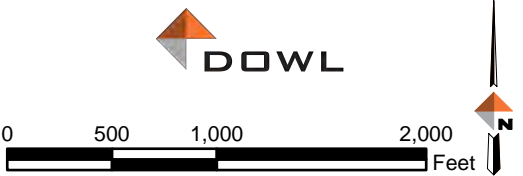
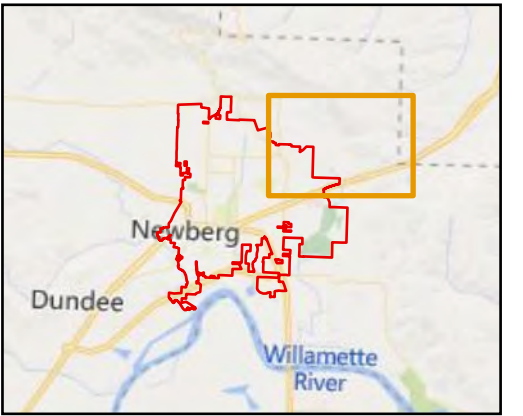


Source: City of Newberg, DOGAMI SLIDO 3.2 database, DOWL calculations, Oregon Spatial Data Library, Oregon Spatial Explorer – statewide FEMA FIRM database, Yamhill County Assessor, Yamhill County Planning & Development; 2020.

Newberg Urban Reserves Area
Map F: Northeast A and B Subareas Map

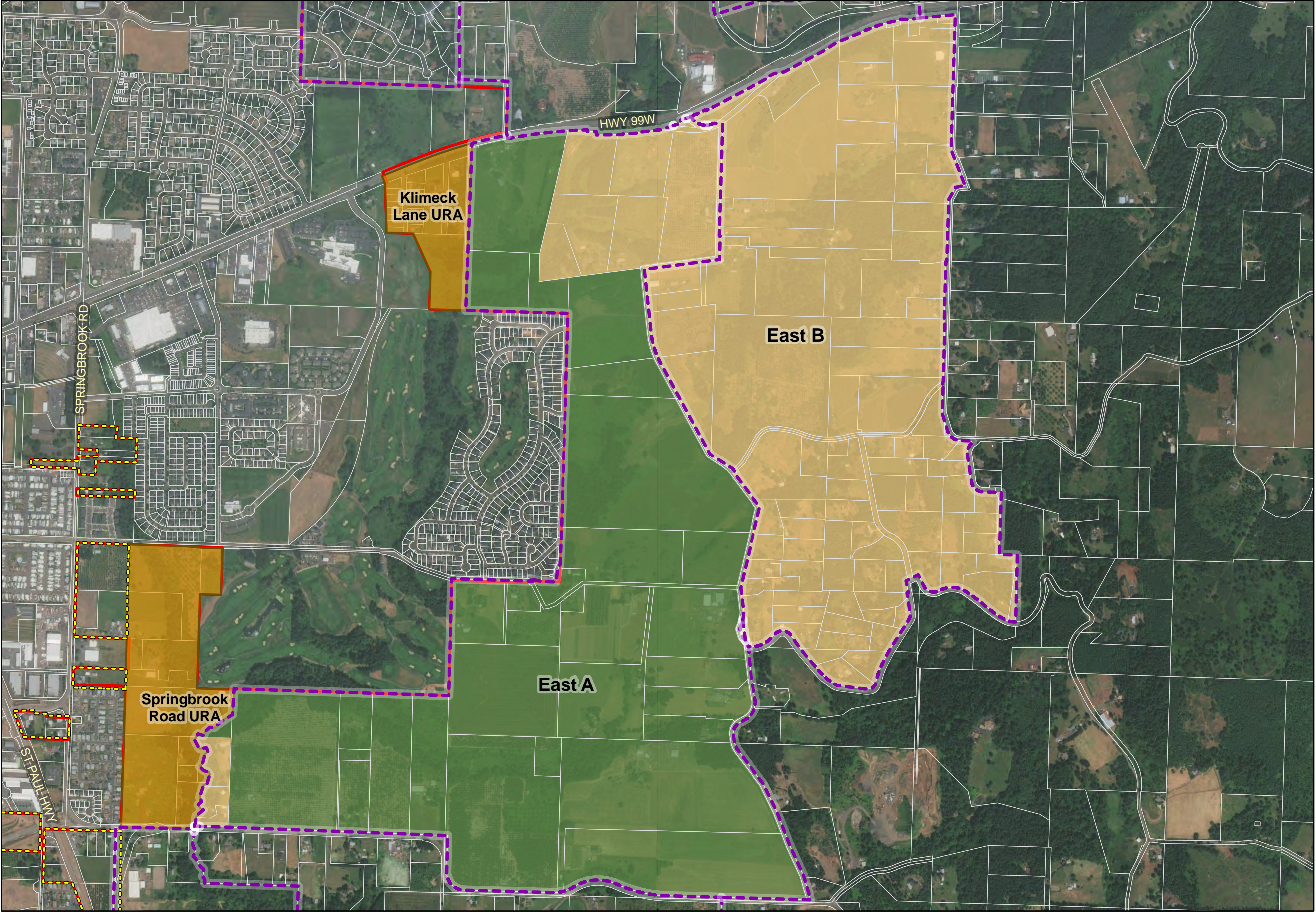


- Legend**
- Study area
 - Current Urban Reserve Area
 - Tax Lots
 - Urban Growth Boundary
 - Newberg City Boundary
 - Constraints**
 - Slopes > 25%
 - High Landslide Susceptibility
 - Very High Landslide Susceptibility
 - ODOT Bypass
 - Wetlands
 - Floodplain
 - Stream Buffer (60 ft)
 - Stream Centerline
 - Contours (10 ft)

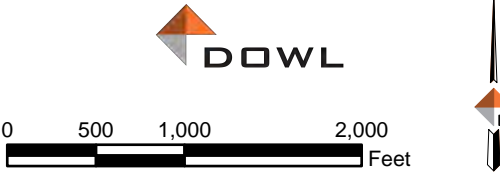
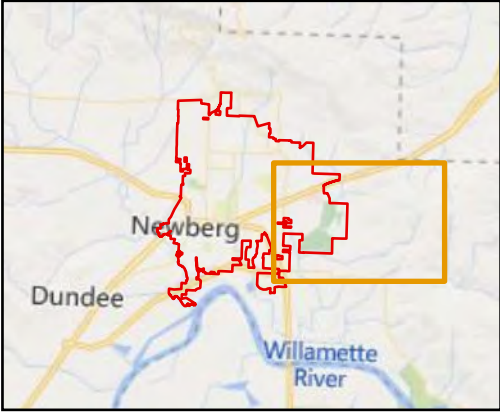


Source: City of Newberg, DOGAMI SLIDO 3.2 database, DOWL calculations, Oregon Spatial Data Library, Oregon Spatial Explorer – statewide FEMA FIRM database, Yamhill County Assessor, Yamhill County Planning & Development; 2020.

Newberg Urban Reserves Area
Map G: Northeast A and B Constraints Map

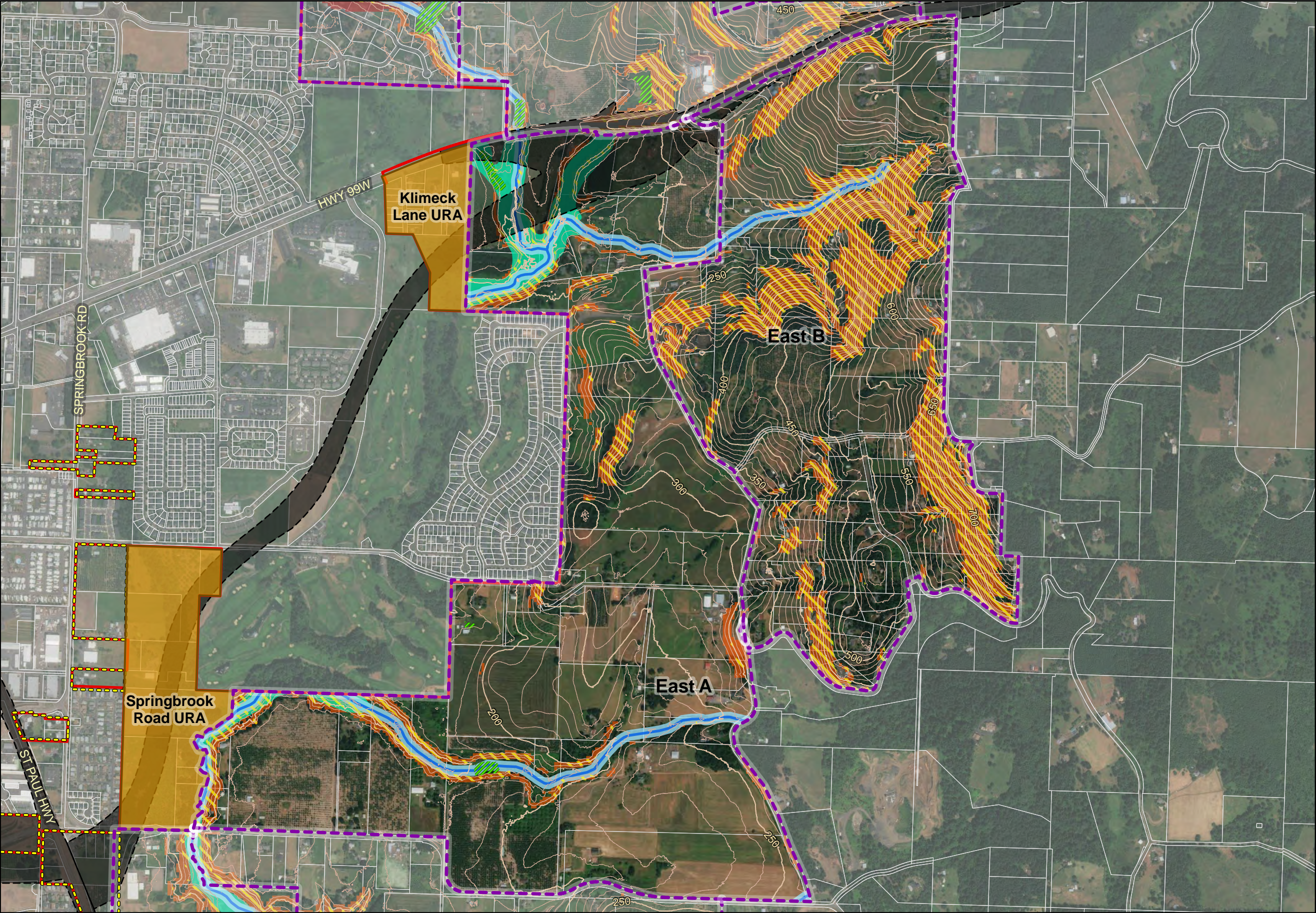


- Legend**
- Study area
 - Exception Areas
 - Resource Areas
 - Current Urban Reserve Area
 - Urban Growth Boundary
 - Newberg City Boundary
 - Tax Lots



Source: City of Newberg, DOGAMI SLIDO 3.2 database, DOWL calculations, Oregon Spatial Data Library, Oregon Spatial Explorer – statewide FEMA FIRM database, Yamhill County Assessor, Yamhill County Planning & Development; 2020.

Newberg Urban Reserves Area
Map H: East A and B Subareas Map

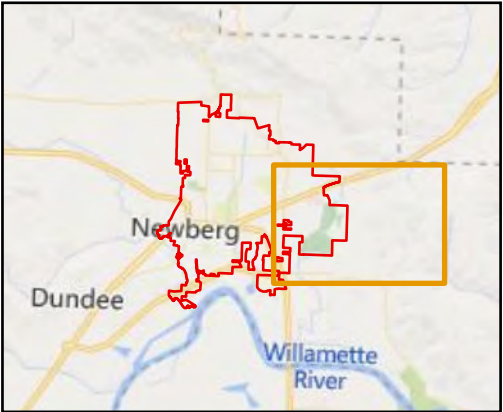


Legend

- Study area
- Current Urban Reserve Area
- Tax Lots
- Urban Growth Boundary
- Newberg City Boundary

Constraints

- Slopes > 25%
- High Landslide Susceptibility
- Very High Landslide Susceptibility
- ODOT Bypass
- Wetlands
- Floodplain
- Stream Buffer (60 ft)
- Stream Centerline
- Contours (10 ft)



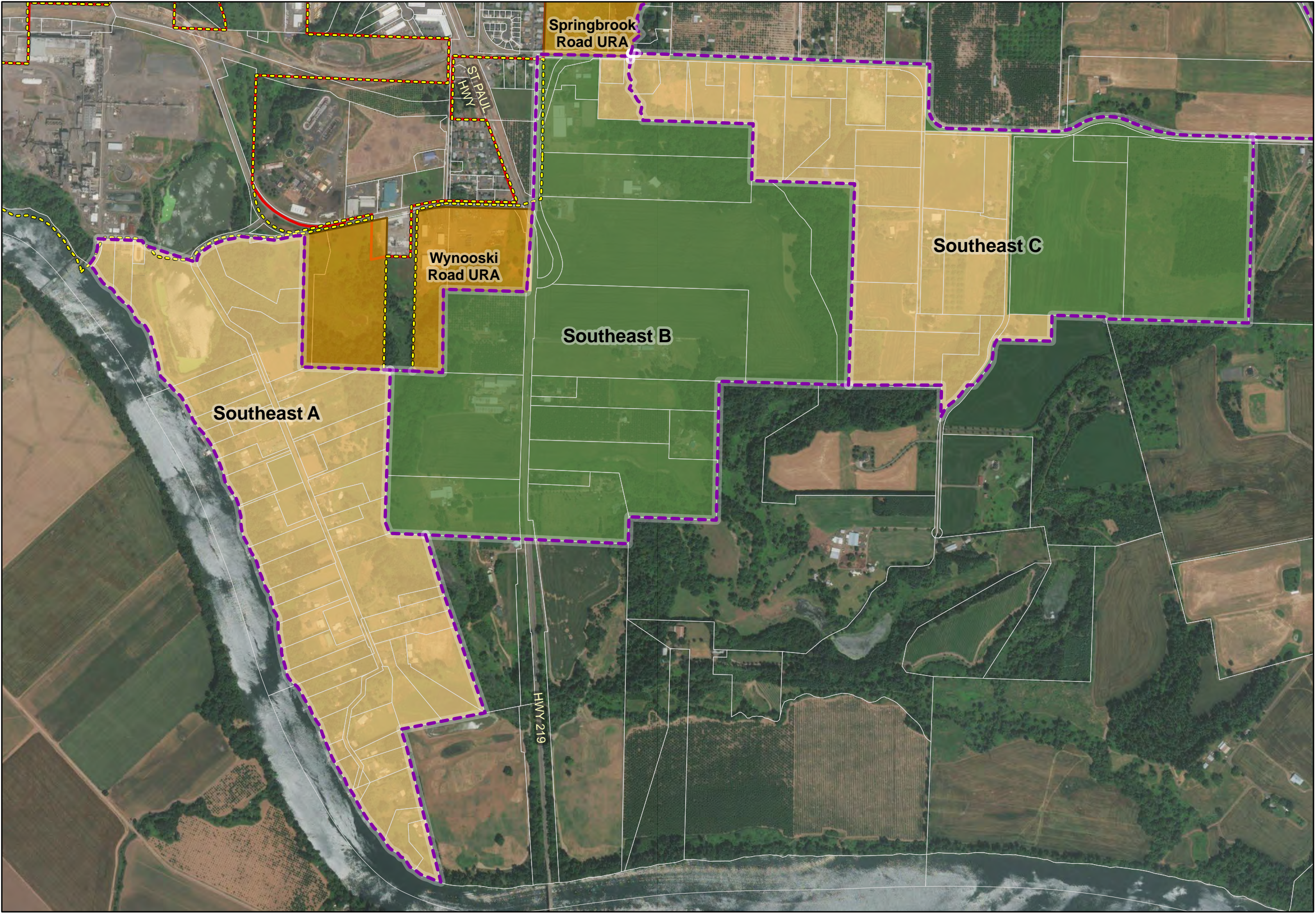
DOWL

0 500 1,000 2,000 Feet

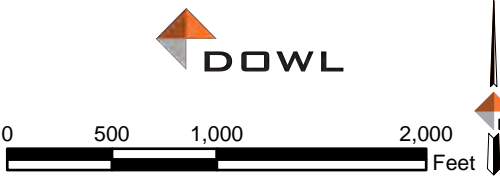
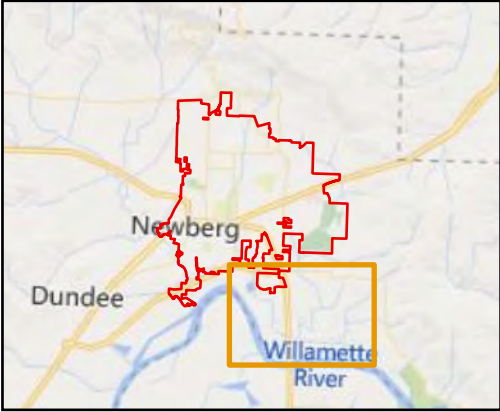
N

Source: City of Newberg, DOGAMI SLIDO 3.2 database, DOWL calculations, Oregon Spatial Data Library, Oregon Spatial Explorer – statewide FEMA FIRM database, Yamhill County Assessor, Yamhill County Planning & Development; 2020.

Newberg Urban Reserves Area
Map I: East A and B Constraints Map

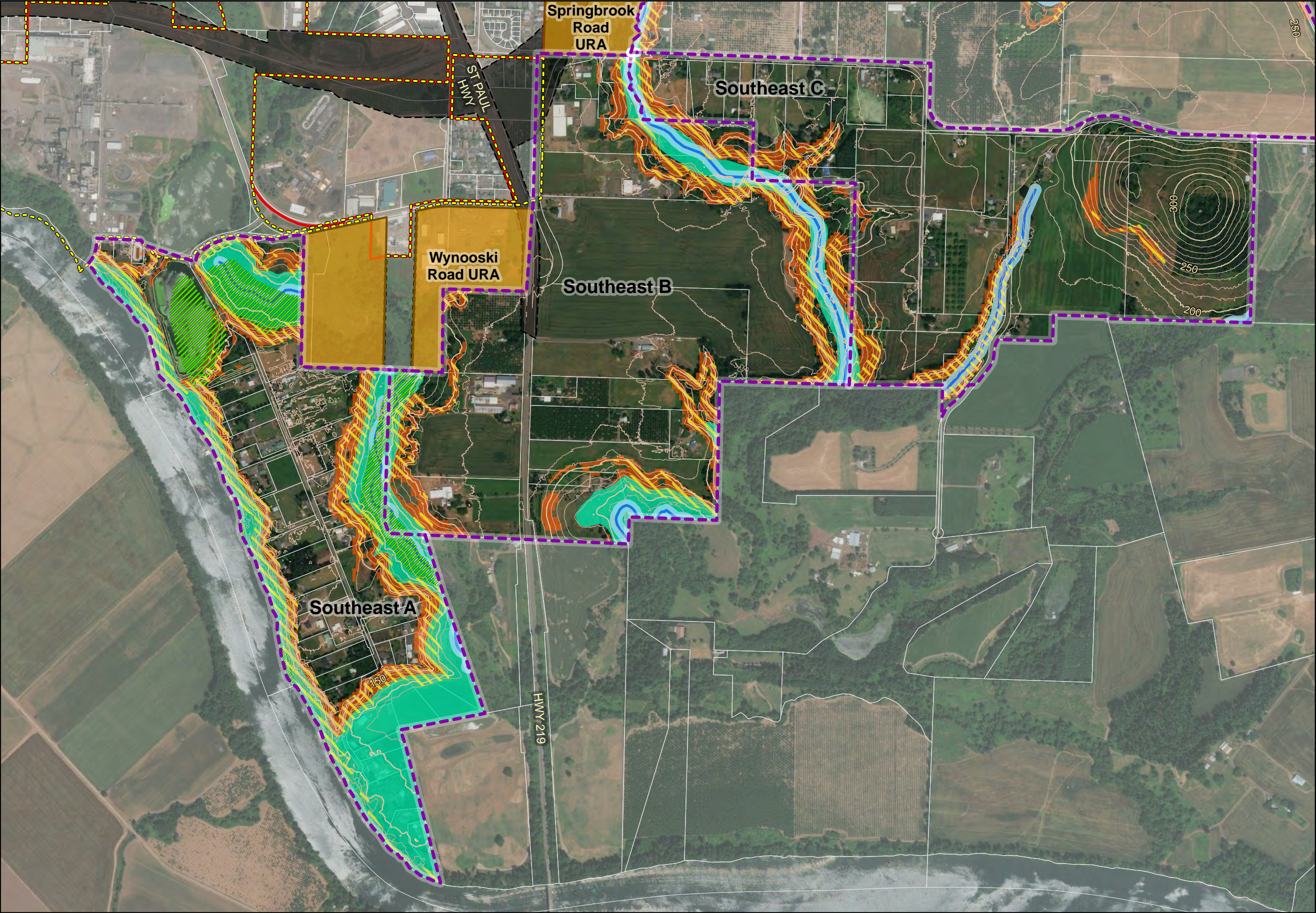


- Legend**
- Study area
 - Exception Areas
 - Resource Areas
 - Current Urban Reserve Area
 - Urban Growth Boundary
 - Newberg City Boundary
 - Tax Lots



Source: City of Newberg, DOGAMI SLIDO 3.2 database, DOWL calculations, Oregon Spatial Data Library, Oregon Spatial Explorer – statewide FEMA FIRM database, Yamhill County Assessor, Yamhill County Planning & Development; 2020.

Newberg Urban Reserves Area
Map J: Southeast A, B and C Subareas Map

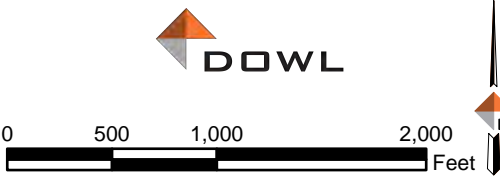
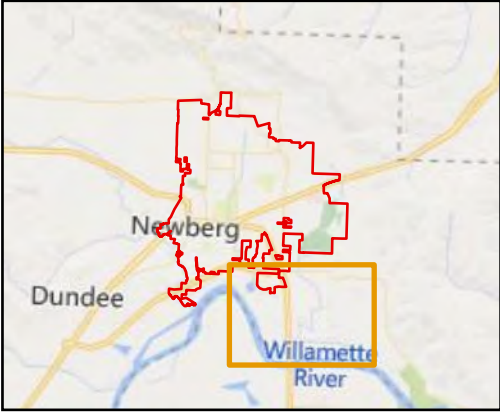


Legend

- Study area
- Current Urban Reserve Area
- Tax Lots
- Urban Growth Boundary
- Newberg City Boundary

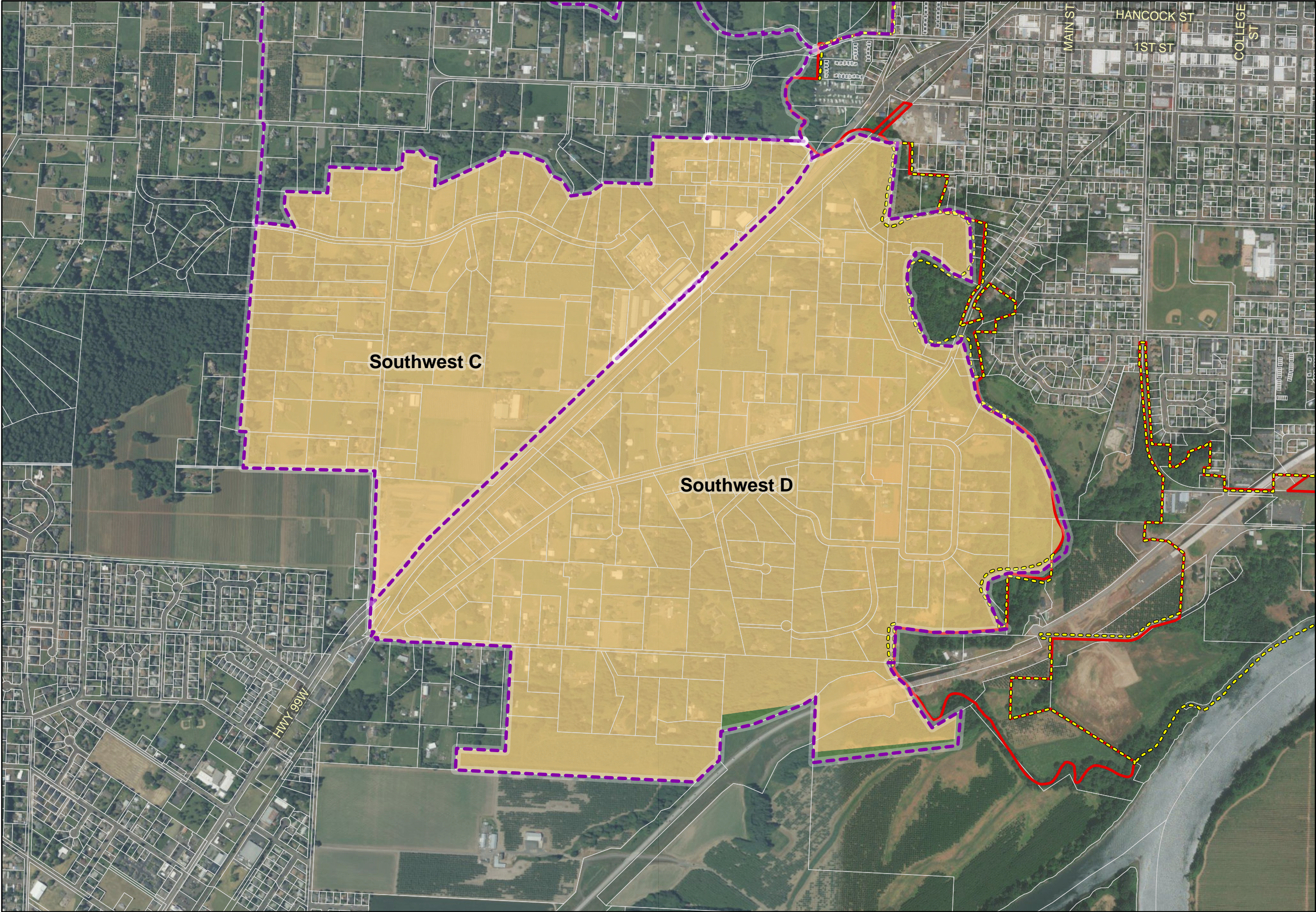
Constraints

- Slopes > 25%
- High Landslide Susceptibility
- ODOT Bypass
- Wetlands
- Floodplain
- Stream Buffer (60 ft)
- Stream Centerline
- Contours (10 ft)

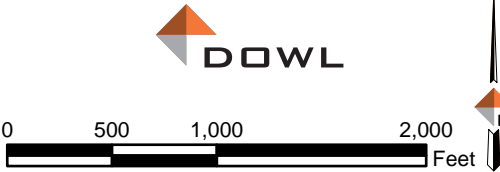
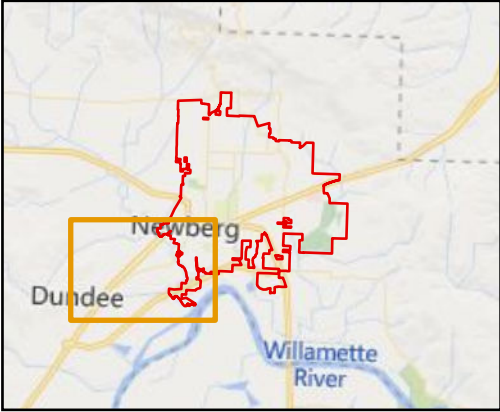


Source: City of Newberg, DOGAMI SLIDO 3.2 database, DOWL calculations, Oregon Spatial Data Library, Oregon Spatial Explorer – statewide FEMA FIRM database, Yamhill County Assessor, Yamhill County Planning & Development; 2020.

Newberg Urban Reserves Area
Map K: Southeast A, B and C Constraints Map

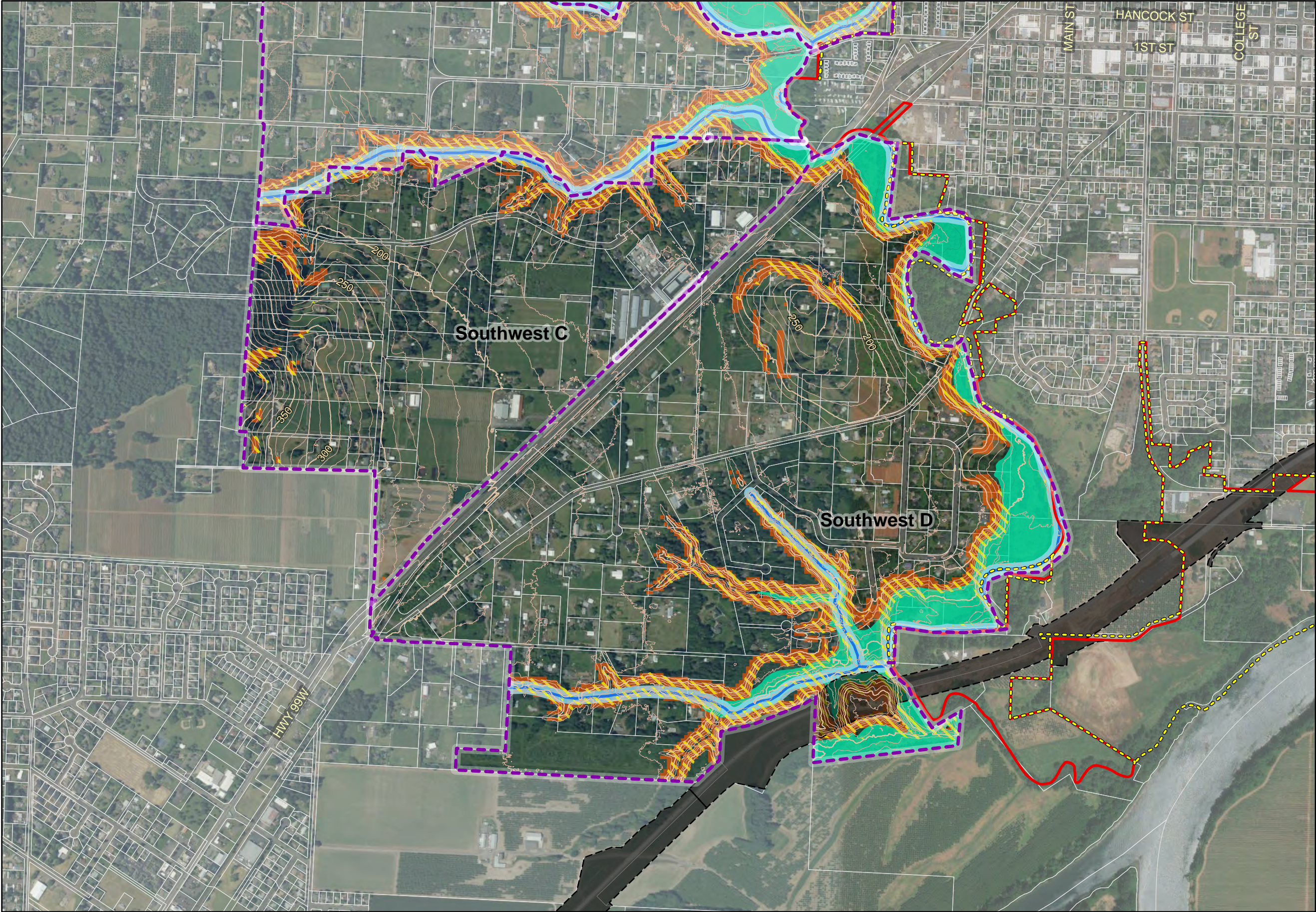


- Legend**
- Study area
 - Exception Areas
 - Resource Areas
 - Urban Growth Boundary
 - Newberg City Boundary
 - Tax Lots



Source: City of Newberg, DOGAMI SLIDO 3.2 database, DOWL calculations, Oregon Spatial Data Library, Oregon Spatial Explorer – statewide FEMA FIRM database, Yamhill County Assessor, Yamhill County Planning & Development; 2020.

Newberg Urban Reserves Area
Map L: Southwest C and D Subareas Map

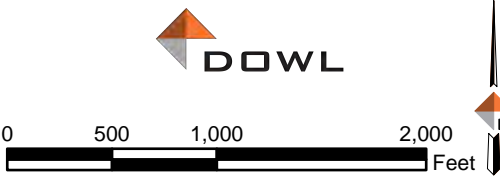
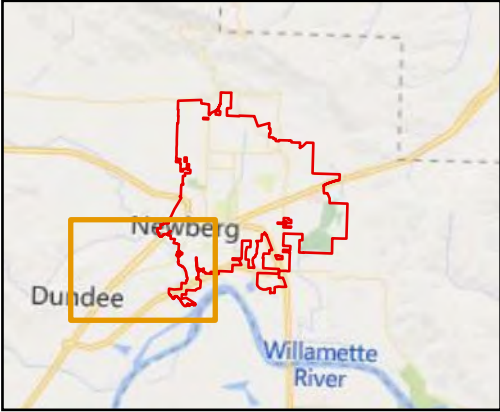


Legend

- Study area
- Tax Lots
- Urban Growth Boundary
- Newberg City Boundary

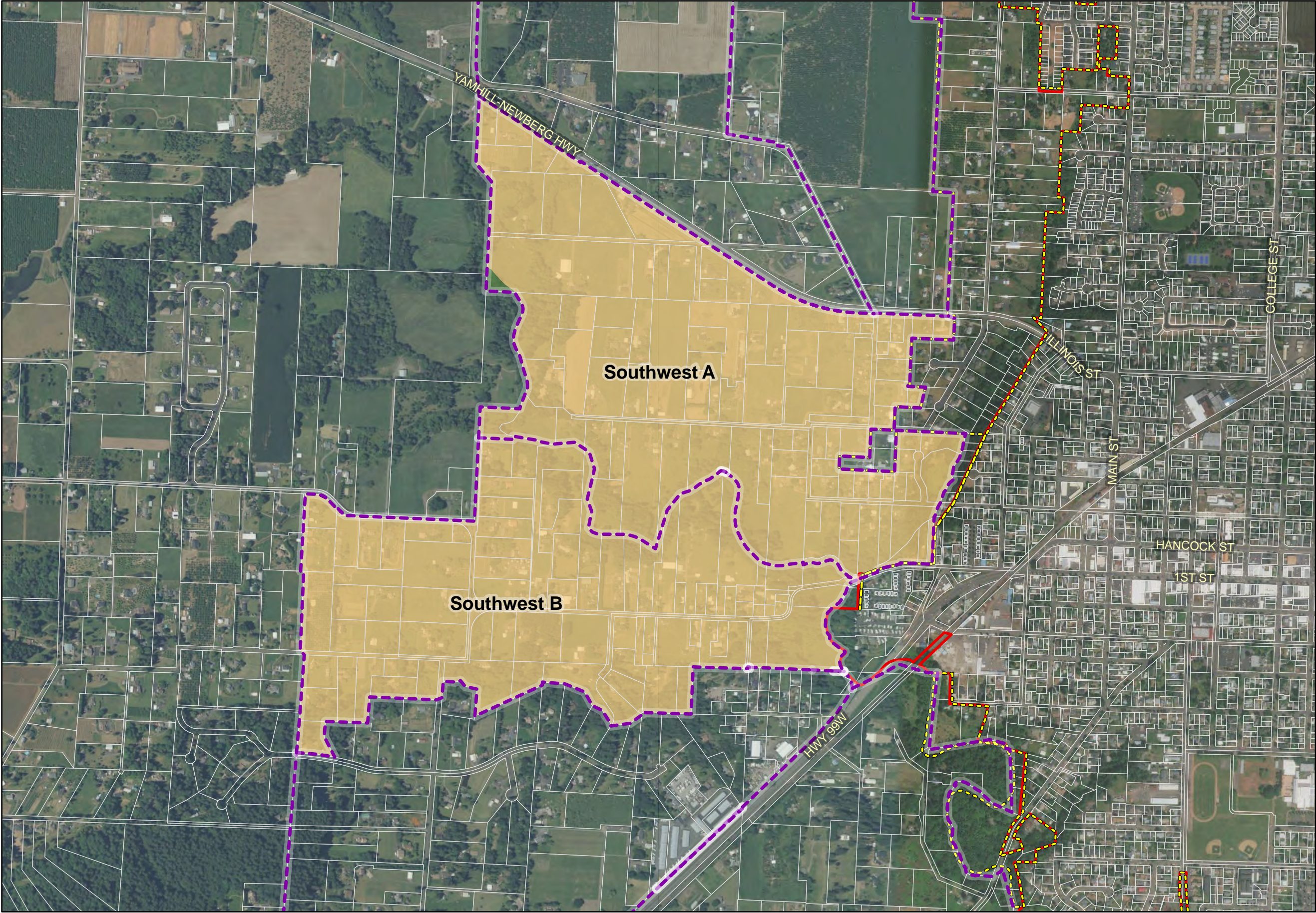
Constraints

- Slopes > 25%
- High Landslide Susceptibility
- ODOT Bypass
- Floodplain
- Stream Buffer (60 ft)
- Stream Centerline
- Contours (10 ft)



Source: City of Newberg, DOGAMI SLIDO 3.2 database, DOWL calculations, Oregon Spatial Data Library, Oregon Spatial Explorer – statewide FEMA FIRM database, Yamhill County Assessor, Yamhill County Planning & Development; 2020.

Newberg Urban Reserves Area
Map M: Southwest C and D Constraints Map

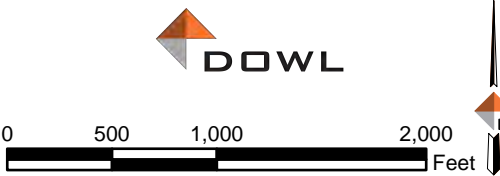


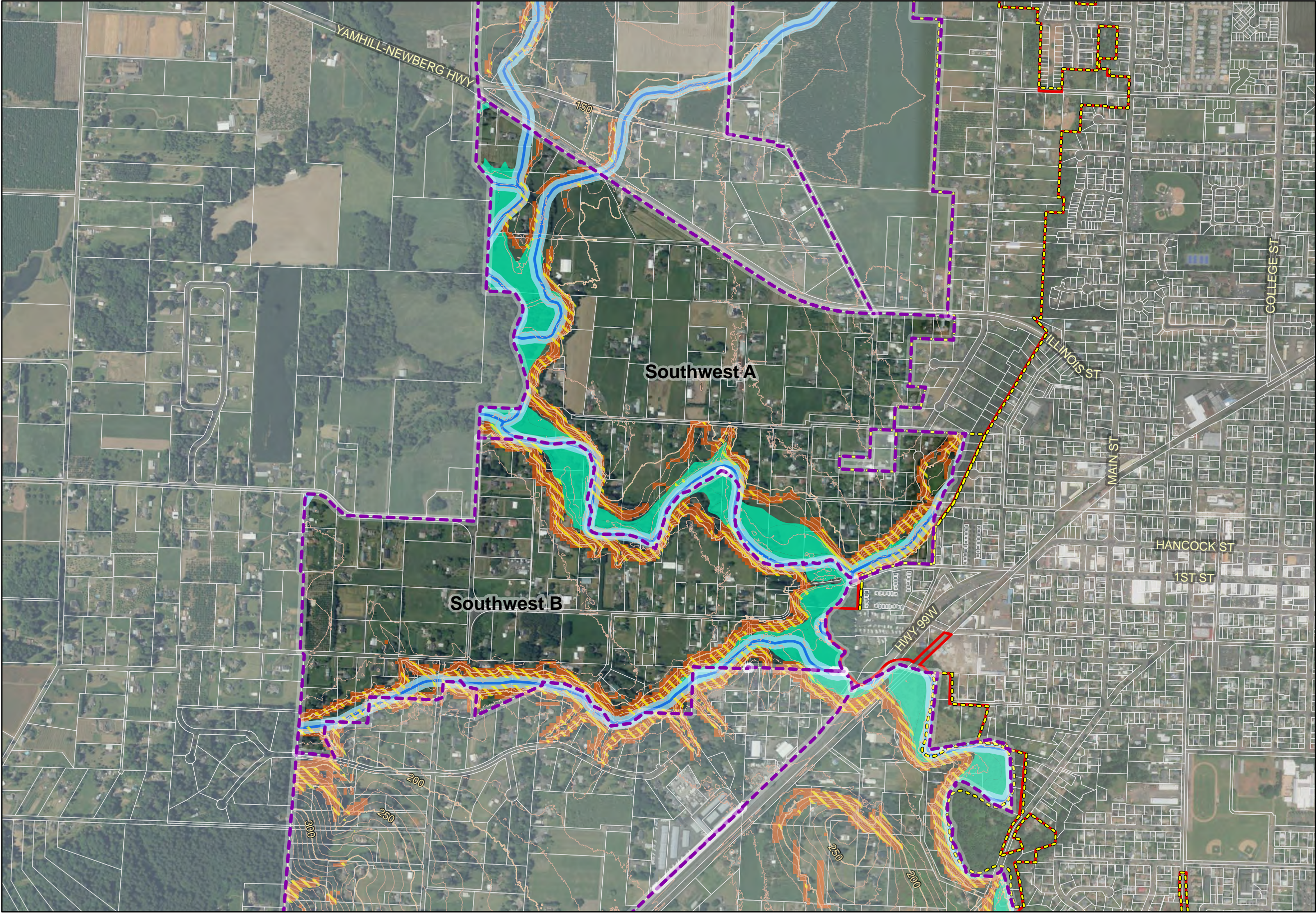
- Legend**
- Study area
 - Exception Areas
 - Resource Areas
 - Urban Growth Boundary
 - Newberg City Boundary
 - Tax Lots

Source: City of Newberg, DOGAMI SLIDO 3.2 database, DOWL calculations, Oregon Spatial Data Library, Oregon Spatial Explorer – statewide FEMA FIRM database, Yamhill County Assessor, Yamhill County Planning & Development; 2020.

Newberg Urban Reserves Area

Map N: Southwest A and B Subareas Map



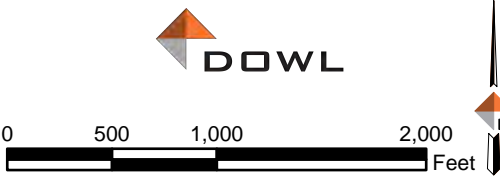
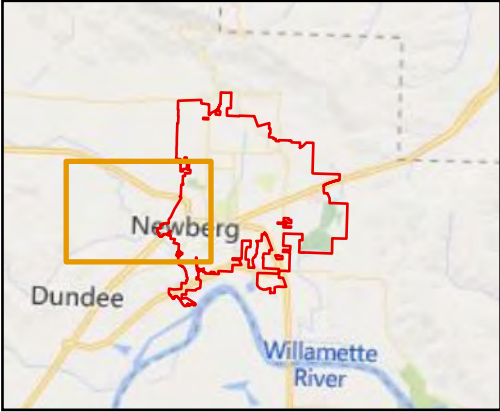


Legend

- Study area
- Tax Lots
- Urban Growth Boundary
- Newberg City Boundary

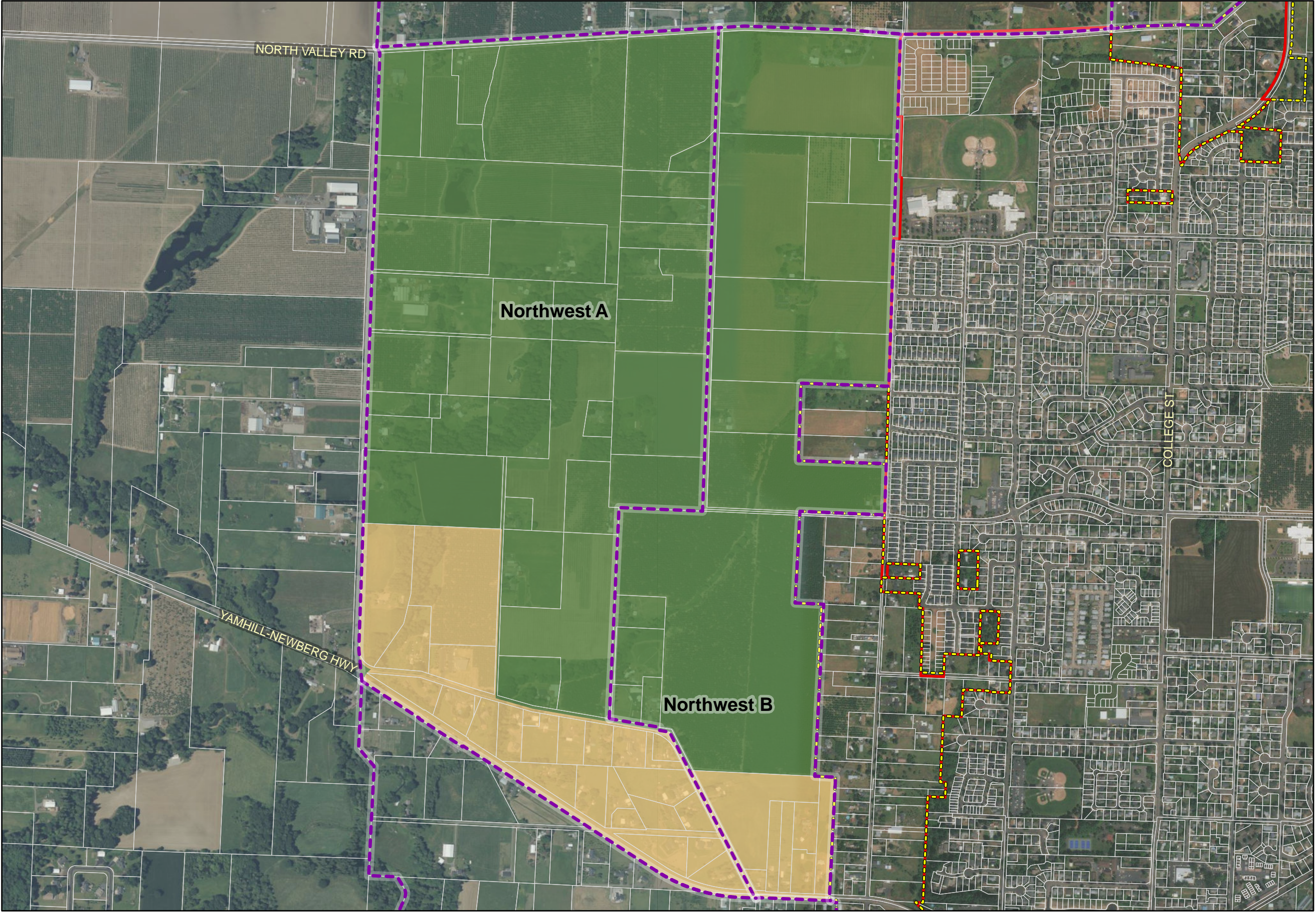
Constraints

- Slopes > 25%
- High Landslide Susceptibility
- Floodplain
- Stream Buffer (60 ft)
- Stream Centerline
- Contours (10 ft)



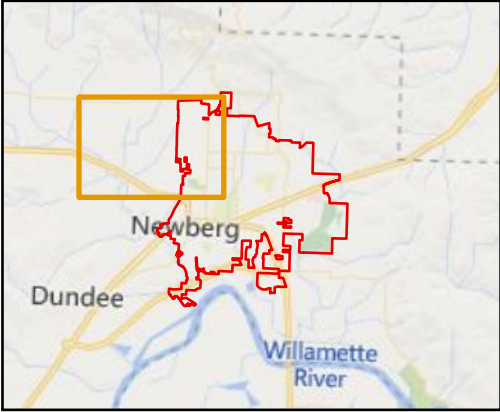
Source: City of Newberg, DOGAMI SLIDO 3.2 database, DOWL calculations, Oregon Spatial Data Library, Oregon Spatial Explorer – statewide FEMA FIRM database, Yamhill County Assessor, Yamhill County Planning & Development; 2020.

Newberg Urban Reserves Area
Map O: Southwest A and B Constraints Map



Legend

- Study area
- Exception Areas
- Resource Areas
- Urban Growth Boundary
- Newberg City Boundary
- Tax Lots

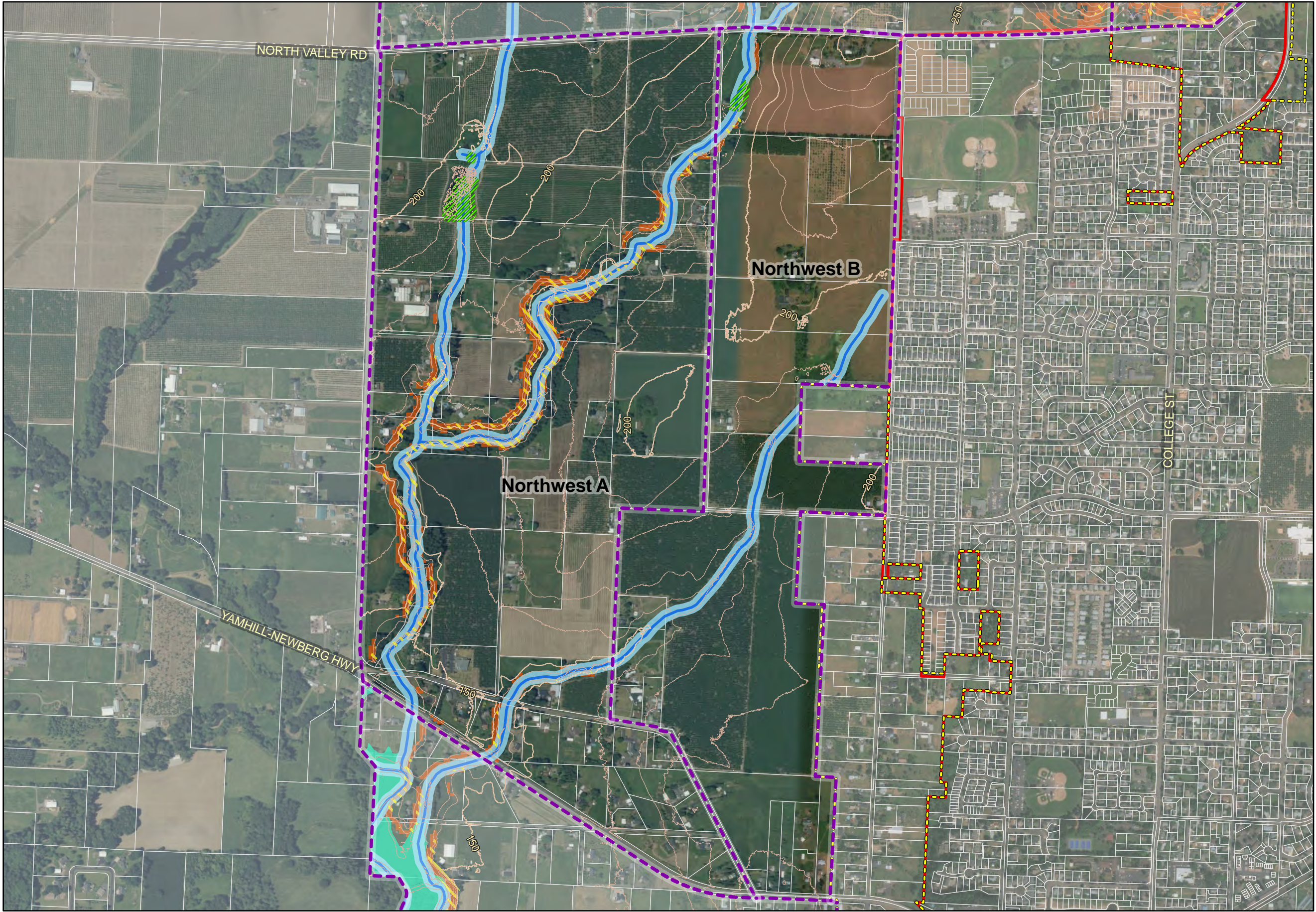


DOWL

0 500 1,000 2,000 Feet

Source: City of Newberg, DOGAMI SLIDO 3.2 database, DOWL calculations, Oregon Spatial Data Library, Oregon Spatial Explorer – statewide FEMA FIRM database, Yamhill County Assessor, Yamhill County Planning & Development; 2020.

Newberg Urban Reserves Area
Map P: Northwest A and B Subareas Map

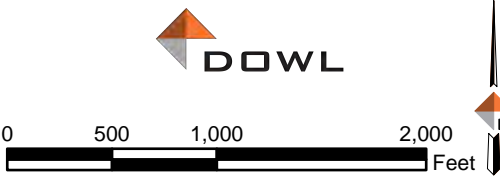
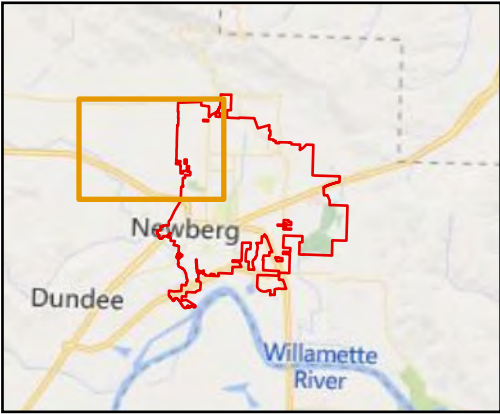


Legend

- Study area
- Tax Lots
- Urban Growth Boundary
- Newberg City Boundary

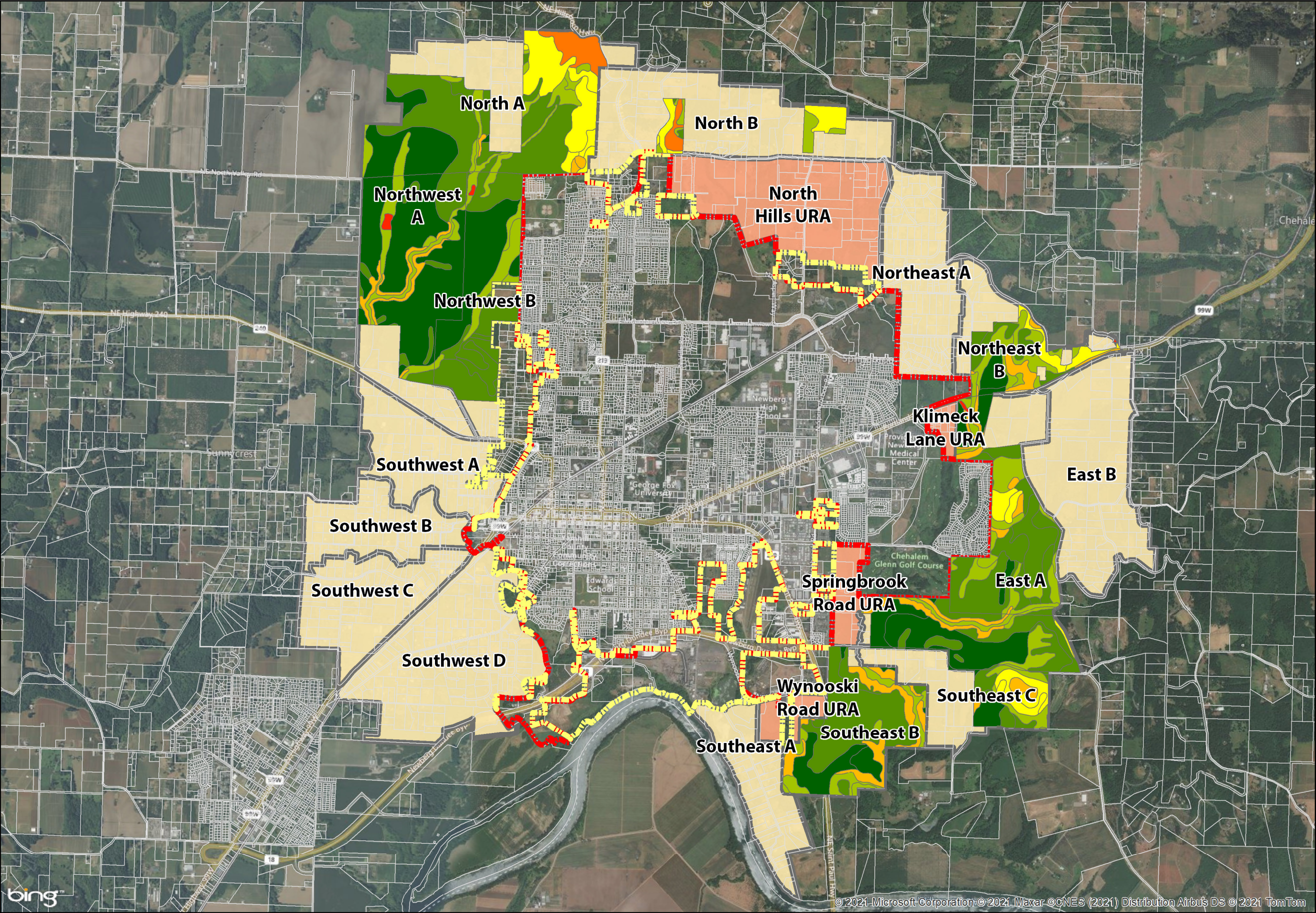
Constraints

- Slopes > 25%
- High Landslide Susceptibility
- Wetlands
- Floodplain
- Stream Buffer (60 ft)
- Stream Centerline
- Contours (10 ft)



Source: City of Newberg, DOGAMI SLIDO 3.2 database, DOWL calculations, Oregon Spatial Data Library, Oregon Spatial Explorer – statewide FEMA FIRM database, Yamhill County Assessor, Yamhill County Planning & Development; 2020.

Newberg Urban Reserves Area
Map Q: Northwest A and B Constraints Map



Legend

- Newberg City Boundary
- Urban Growth Boundary
- Tax lots
- Current Urban Reserve Area
- Study Area- Exception Land

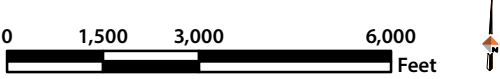
Study Area- Resource Land -Soil Classification

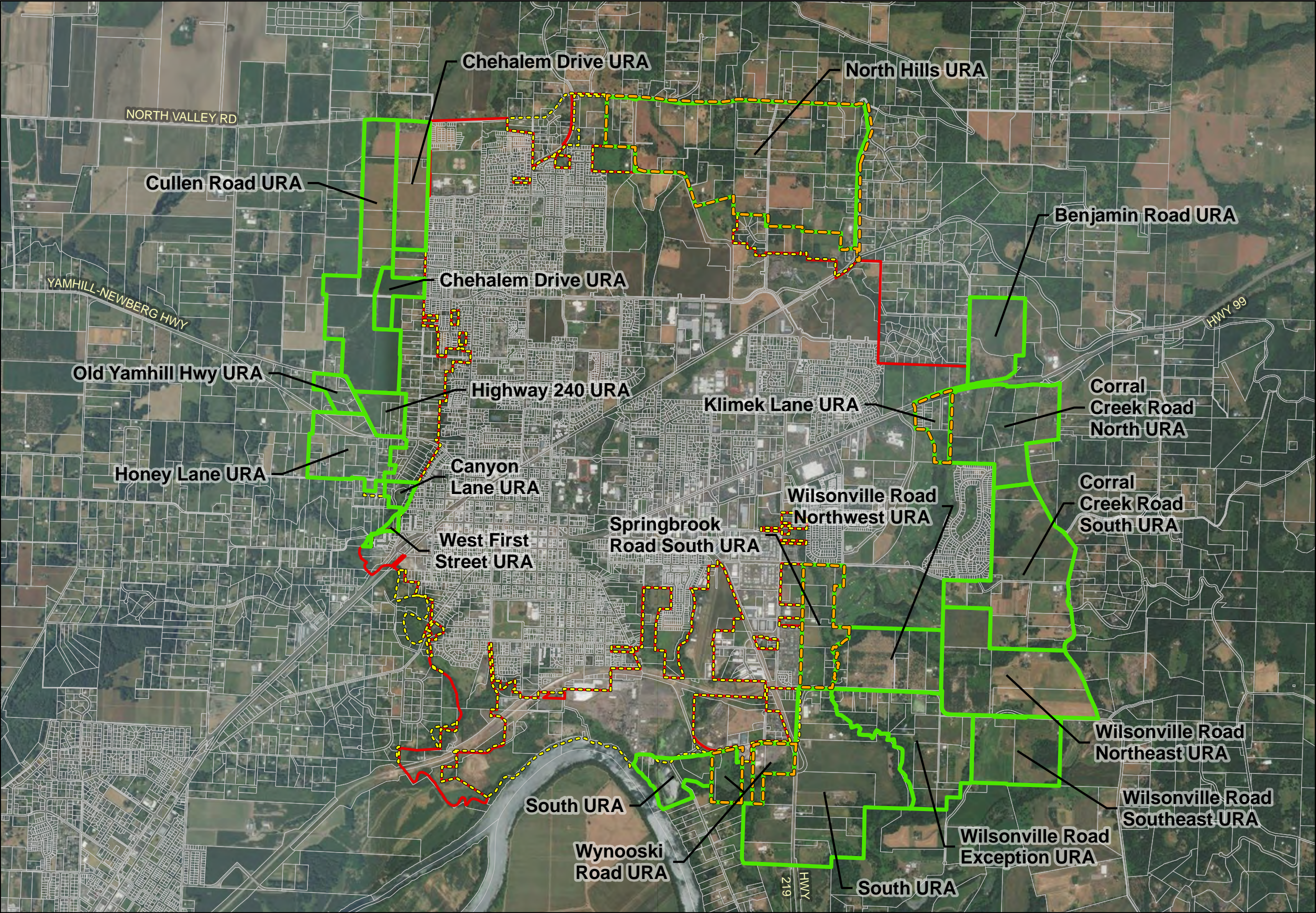
- I
- II
- III
- IV
- VI
- VII
- VIII



Source: City of Newberg, DOGAMI SLIDO 3.2 database, DOWL calculations, Oregon Spatial Data Library, Oregon Spatial Explorer – statewide FEMA FIRM database, Yamhill County Assessor, Yamhill County Planning & Development; 2020.

Newberg Urban Reserves Area
Map R: Study Area – Resource Lands Soils Map





Legend

- Current Urban Reserve Area
- 2007 Urban Reserve Area
- Urban Growth Boundary
- Newberg City Boundary
- Tax Lots



DOWL

0 1,250 2,500 5,000 Feet

Source: City of Newberg, DOGAMI SLIDO 3.2 database, DOWL calculations, Oregon Spatial Data Library, Oregon Spatial Explorer – statewide FEMA FIRM database, Yamhill County Assessor, Yamhill County Planning & Development; 2020.

Newberg Urban Reserves Area
Map S: Former 2007 Urban Reserve Areas Map