

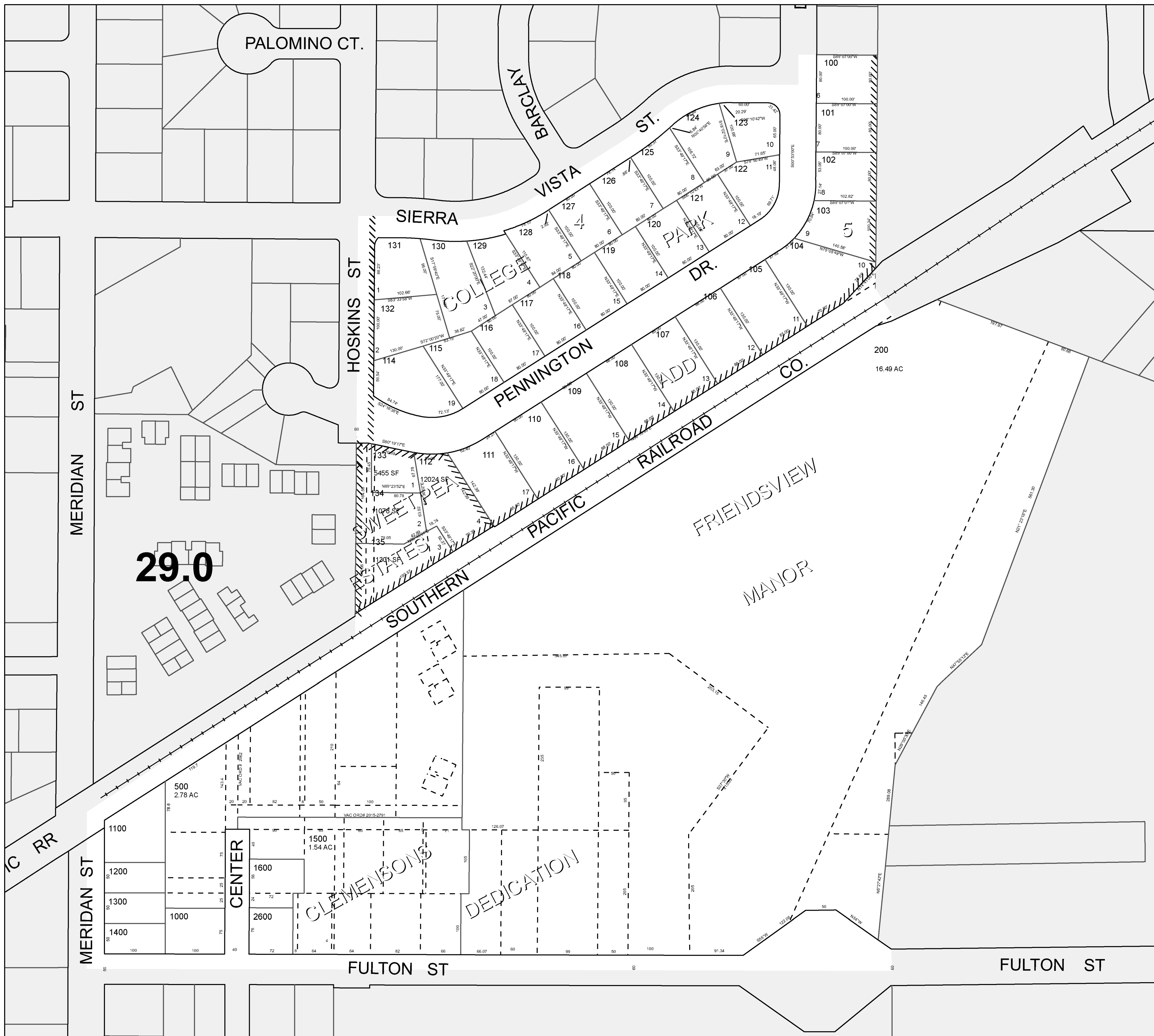
FRIENDSVIEW RCF PHASE 1

Exhibit C: Yamhill County Assessor's Map



ASSESSMENT & TAX
CARTOGRAPHY

N.W.1/4 S.W.1/4 SEC.17 T.3S. R.2W. W.M.
YAMHILL COUNTY OREGON
1" = 100'



- CANCELLED TAXLOTS:
- 2601 1001
 - 2100 90000
 - 400
 - 300
 - 290
 - 113
 - 91101
 - 91102
 - 91201
 - 91202
 - 92103
 - 92104
 - 92203
 - 92204
 - 93105
 - 93106
 - 93205
 - 93206
 - 1700
 - 1800
 - 1900
 - 2000
 - 2200
 - 2300
 - 2400
 - 2500
 - 600
 - 700
 - 800
 - 900

DATE PRINTED: 12/14/2018

This product is for Assessment and Taxation (A&T) purposes only and has not been prepared or is suitable for legal, engineering, surveying or any purposes other than assessment and taxation.