

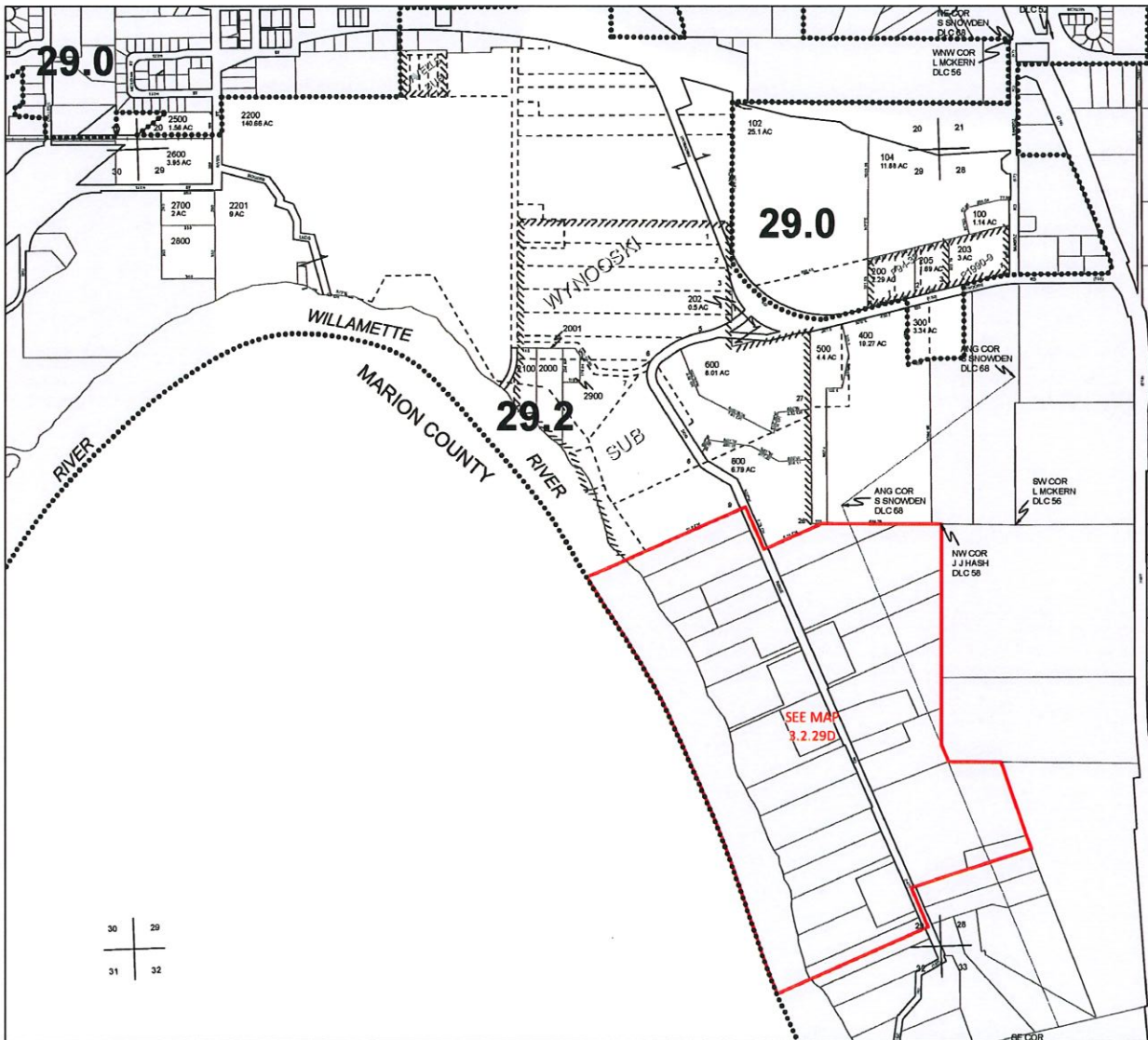
EXHIBIT B

Tax Map



ASSESSMENT & TAX
CARTOGRAPHY

SECTION 29 T.3S. R.2W. W.M.
YAMHILL COUNTY OREGON
1" = 400'



CANCELLED TAXLOTS

2200 U2	900
2200 U1	700
2400	204
2300	201
1905	101
1904	103
1903	2501
1902	2200 AD1
1901	2200 AD2
1900	2200 AD3
1802	
1801	
1800	
1701	
1700	
1600	
1500	
1403	
1402	
1401	
1400	
1300	
1201	
1200	
1101	
1100	
1002	
1001	
1000	
901	

DATE PRINTED: 6/24/2019

This product is for Assessment and Taxation (A&T) purposes only and has not been prepared or is suitable for legal, engineering, surveying or any purposes other than assessment and taxation.