

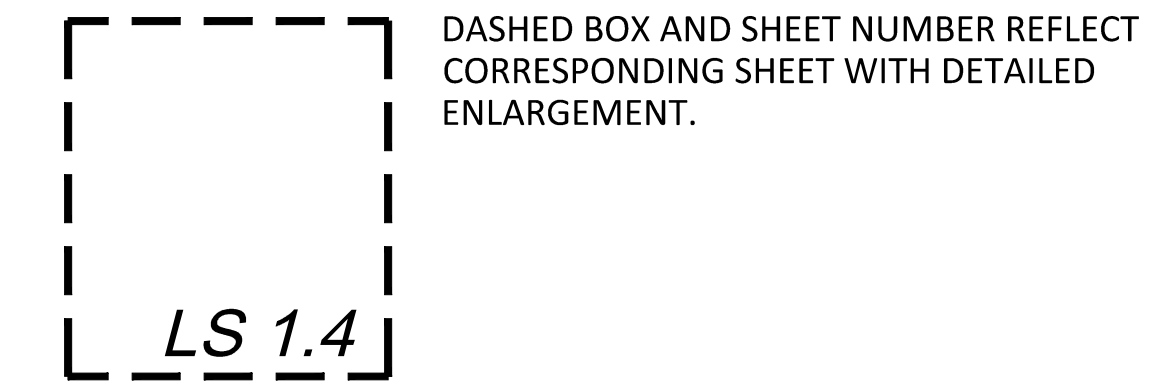
STREET TREE PLANT MATERIAL SCHEDULE

SYMBOL	STREET TREES ITEM	SIZE
	ACER RUBRUM 'FRANKSRED' RED SUNSET MAPLE	2" CAL.
	PLATANUS X ACERIFOLIA 'BLOODGOOD' BLOODGOOD LONDON PLANE TREE	2" CAL.

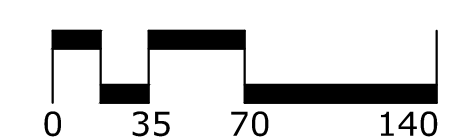
NOTE: A STREET LIGHT LAYOUT PLAN HAS NOT YET BEEN GENERATED. STREET TREE LOCATIONS WILL BE COORDINATED WITH PROPOSED STREET LIGHT, DRIVEWAY, AND UTILITY LOCATIONS DURING CONSTRUCTION DOCUMENT PREPARATION.

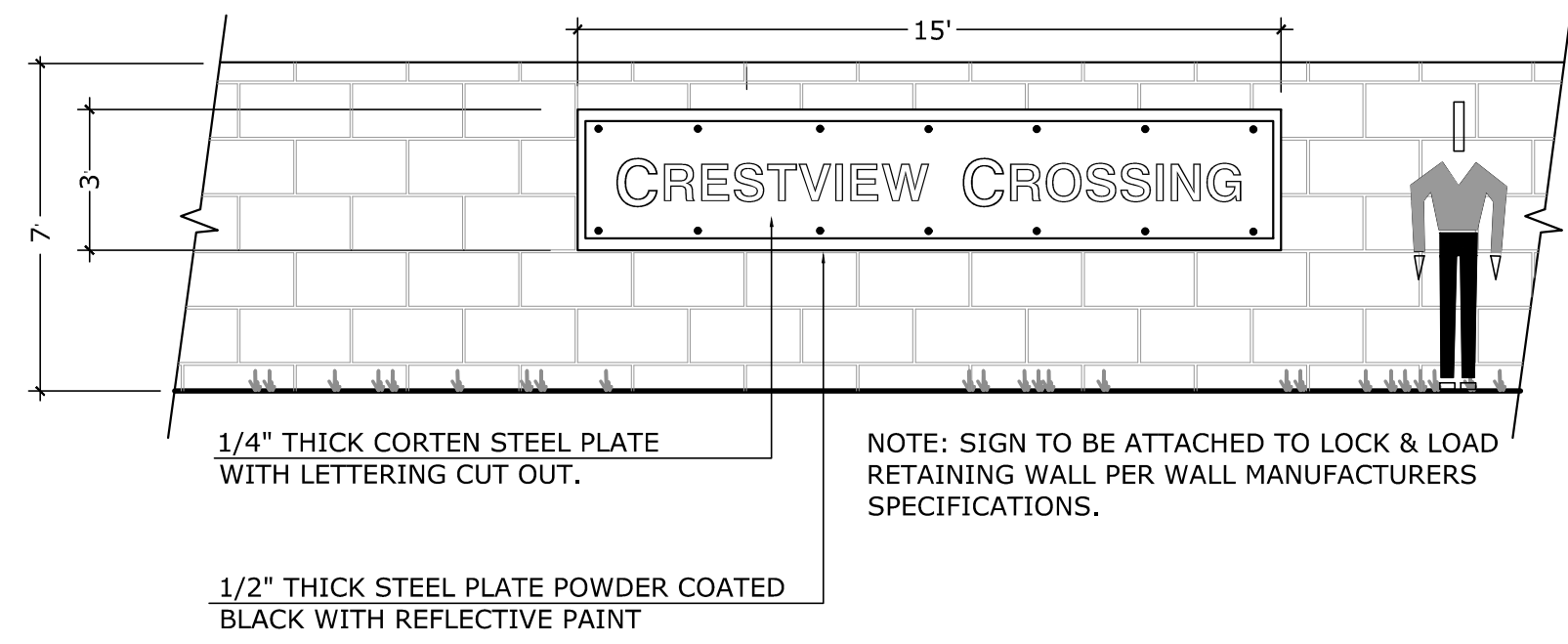
GENERAL LANDSCAPE NOTES

- LANDSCAPE PLANTING SHALL CONFORM TO THE STANDARDS ESTABLISHED UNDER THE CITY OF NEWBERG PLANNING DEPARTMENT.
- ALL PLANT BEDS SHALL HAVE A 3" DEPTH OF BARK MULCH.
- LANDSCAPE AREAS SHALL HAVE A COMPLETE UNDERGROUND AUTOMATIC IRRIGATION SYSTEM WITH FULL HEAD TO HEAD COVERAGE. WETLAND BUFFER SHALL HAVE A TEMPORARY IRRIGATION SYSTEM FOR THE TWO YEAR ESTABLISHMENT PERIOD.
- ALL PLANT MATERIAL DELIVERED TO THIS SITE SHALL MEET THE AMERICAN STANDARD FOR NURSERY STOCK STANDARDS.
- CONTRACTOR SHALL OBTAIN WRITTEN APPROVAL FOR ALL PLANT MATERIAL SUBSTITUTIONS FROM THE LANDSCAPE ARCHITECT PRIOR TO INSTALLATION. PLANT SUBSTITUTIONS WITHOUT PRIOR WRITTEN APPROVAL THAT DO NOT COMPLY WITH THE DRAWINGS AND SPECIFICATIONS MAY BE REJECTED BY THE LANDSCAPE ARCHITECT AT NO COST TO THE OWNER. THESE ITEMS MAY BE REQUIRED TO BE REPLACED WITH PLANT MATERIALS THAT ARE IN COMPLIANCE WITH THE DRAWINGS.

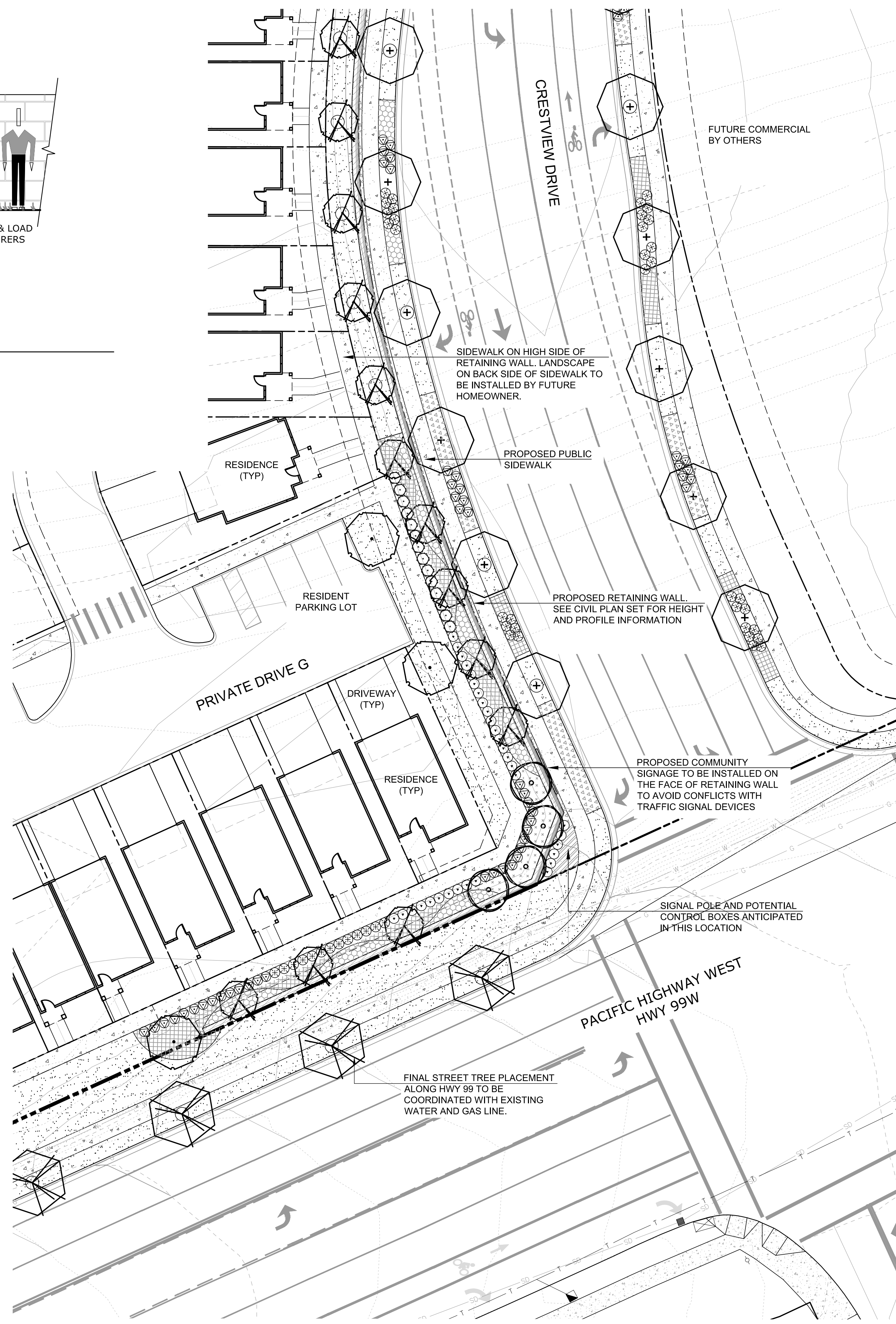


SCALE: 1"=70'-0"



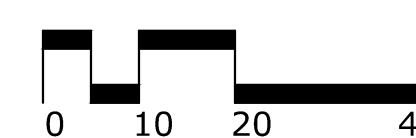


A MAIN ENTRY SIGNAGE
SCALE 1/4" = 1'-0"



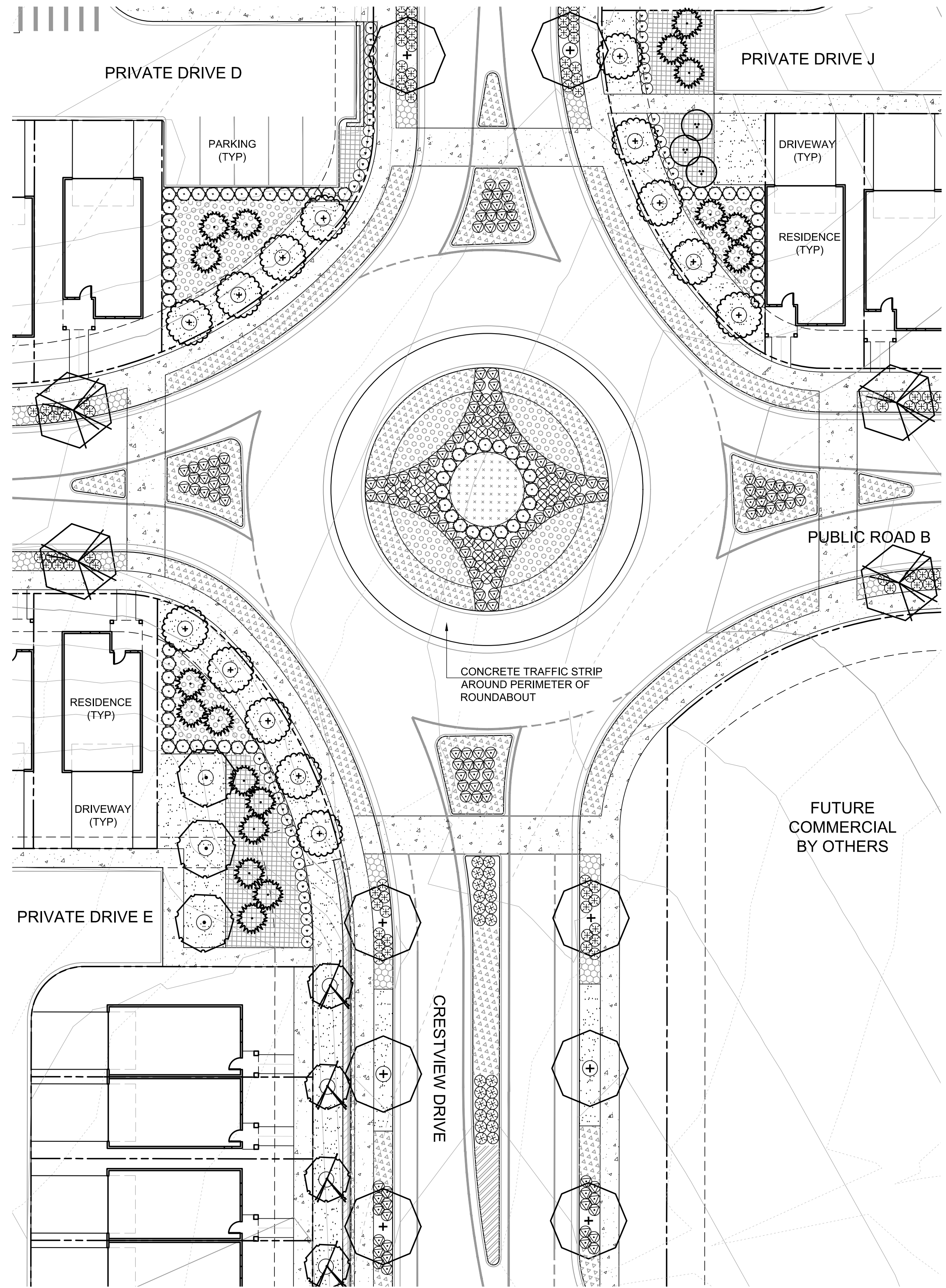
B MAIN ENTRY AND CRESTVIEW DRIVE ENLARGEMENT
SCALE 1" = 20'-0"

SCALE: 1" = 20'-0"

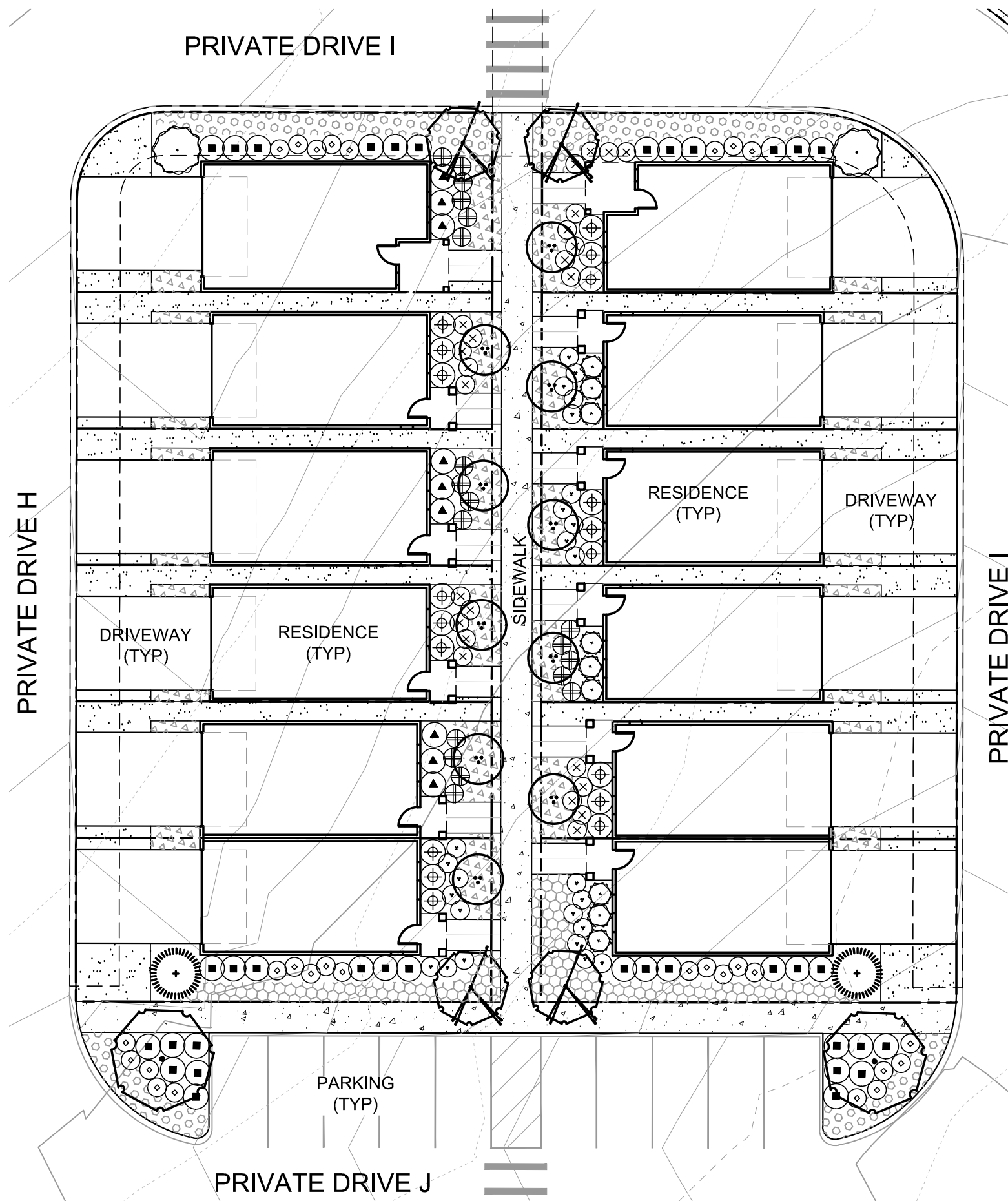


LANDSCAPE PLANT MATERIAL SCHEDULE

SYMBOL	STREET TREES ITEM	SIZE
	ACER RUBRUM 'FRANKSRED'	2" CAL.
	RED SUNSET MAPLE	2" CAL.
	PLATANUS X ACERIFOLIA 'BLOODGOOD'	2" CAL.
	BLOODGOOD LONDON PLANE TREE	2" CAL.
TREES ITEM		SIZE
	ZELKOVA SERRATA 'GREEN VASE'	2" CAL.
	GREEN VASE ZELKOVA	2" CAL.
	TILIA CORDATA 'GREENSPIRE'	2" CAL.
	GREENSPIRE LINDEN	2" CAL.
	BETULA JACQUEMONTII	2" CAL.
	HIMALAYAN BIRCH	2" CAL.
	CERCIS CANADENSIS	1.5" CAL.
	EASTERN REDBUD	1.5" CAL.
	PRUNUS SARGENTII	1.5" CAL.
	SARGENT CHERRY	1.5" CAL.
	STYRAX JAPONICUS	1.5" CAL.
	JAPANESE SNOWBELL	1.5" CAL.
	ACER CIRCINATUM	7'-8" HT.
	VINE MAPLE	7'-8" HT.
TREES - EVERGREEN		SIZE
	PINUS STROBUS 'FASTIGIATA'	6' HT. / B&B
	FASTIGIATA WHITE PINE	6' HT. / B&B
	CHAMAECYPARIS OBTUSA 'GRACILIS'	6' HT. / B&B
	SLENDER HINOKI FALSE CYPRESS	6' HT. / B&B
	THUJA PLICATA 'HOGAN'	6' HT. / B&B
	HOGAN'S WESTERN REDCEDAR	6' HT. / B&B
SHRUBS - DECIDUOUS		SIZE
	VIBURNUM P. TOMENTOSUM 'MARIESII'	7 GAL.
	DOUBLEFILE VIBURNUM	7 GAL.
	HYDRANGEA QUERCIFOLIA 'SNOW QUEEN'	7 GAL.
	SNOW QUEEN OAKLEAF HYDRANGEA	7 GAL.
	CORNUS STOLONIFERA 'FARROW'	3 GAL.
	ARCTIC FIRE RED TWIG DOGWOOD	3 GAL.
	BERBERIS THUN. 'CHERRY BOMB'	3 GAL.
	CHERRY BOMB BARBERRY	3 GAL.
	ROSA X 'RADRAZZ'	3 GAL.
	KNOCK OUT SHRUB ROSE	3 GAL.
SHRUBS - EVERGREEN		SIZE
	PRUNUS LAUROCERASUS 'NANA'	7 GAL.
	DWARF ENGLISH LAUREL	7 GAL.
	CHOISYA TERNATA	7 GAL.
	MEXICAN ORANGE	7 GAL.
	ABELIA X GRANDIFLORA	7 GAL.
	GLOSSY ABELIA	7 GAL.
	OSMANTHUS FRAGRANS	7 GAL.
	SWEET OLIVE	7 GAL.
	SARCOCOCCA HOOKERIANA VAR. HUMILIS	3 GAL.
	HIMALAYAN SWEET BOX	3 GAL.
	DAPHNE ODORA 'AUREO-MARGINATA'	3 GAL.
	VARIEGATED WINTER DAPHNE	3 GAL.
	NANDINA DOMESTICA 'COMPACTA'	3 GAL.
	DWARF HEAVENLY BAMBOO	3 GAL.
	BUXUS SEMPERVIRENS 'SUFRUTICOSA'	3 GAL.
	EDGING BOXWOOD	3 GAL.
	VIBURNUM DAVIDII	3 GAL.
	DAVID VIBURNUM	3 GAL.
	ESCALLONIA 'COMPACTA'	3 GAL.
	COMPACT ESCALLONIA	3 GAL.
GRASSES & ACCENTS		SIZE
	LIRIOPE MUSCARI 'BIG BLUE'	1 GAL.
	BIG BLUE LILYTURF	1 GAL.
	MISCANTHUS SINENSIS 'VARIEGATUS'	3 GAL.
	VARIEGATED JAPANESE SILVER GRASS	3 GAL.
	MISCANTHUS SINENSIS 'LITTLE KITTEN'	3 GAL.
	LITTLE KITTEN MAIDEN GRASS	3 GAL.
	CALAMAGROSTIS X ACUTIFLORA 'OVERDAM'	3 GAL.
	OVERDAM FEATHER REED GRASS	3 GAL.
GROUNDCOVERS		SIZE
	COTONEASTER DAMMERI 'LOWFAST'	1 GAL.
	BEARBERRY COTONEASTER	3" O.C.
	RUBUS CALY. 'EMERALD CARPET'	1 GAL.
	EMERALD CARPET CREEPING BERRY	3" O.C.
	ANNUALS	4" FLATS 8" O.C.
	PT 769 ROUGH & READY ECO-TURF MIX	SEED
	BY PRO TIME LAWN SEED	5-7 LBS. / 1,000 SF

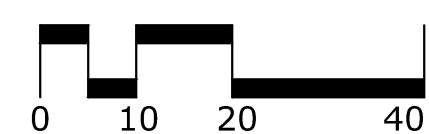


A CRESTVIEW DRIVE AND ROUNDABOUT ENLARGEMENT
SCALE 1"=20'-0"



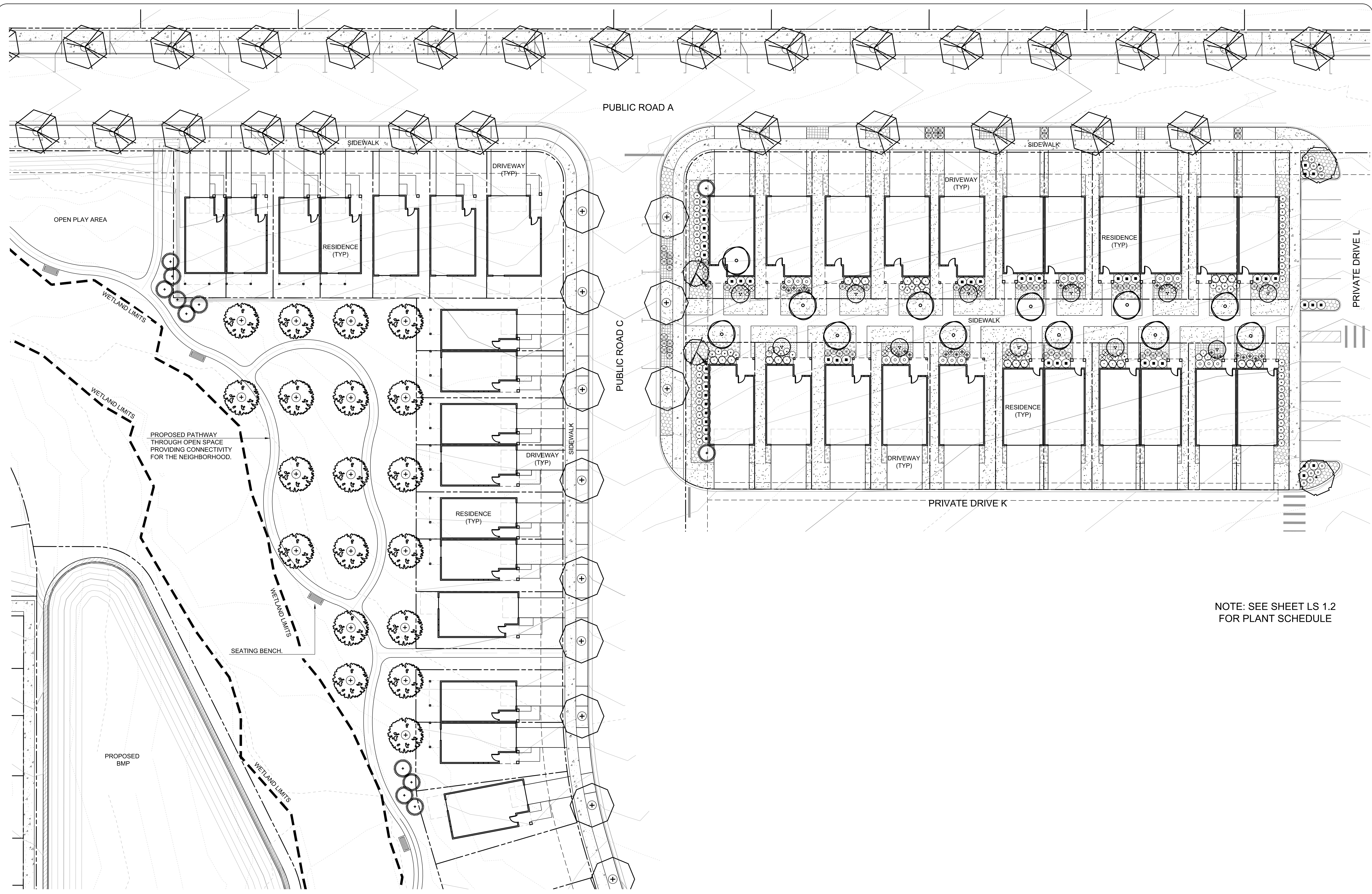
B COURTYARD ENLARGEMENT
SCALE 1"=20'-0"

SCALE: 1"=20'-0"



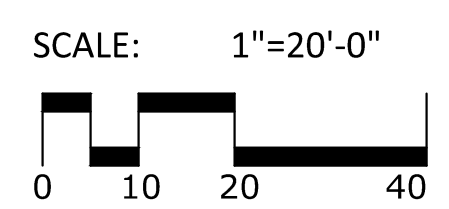
LANDSCAPE PLANT MATERIAL SCHEDULE

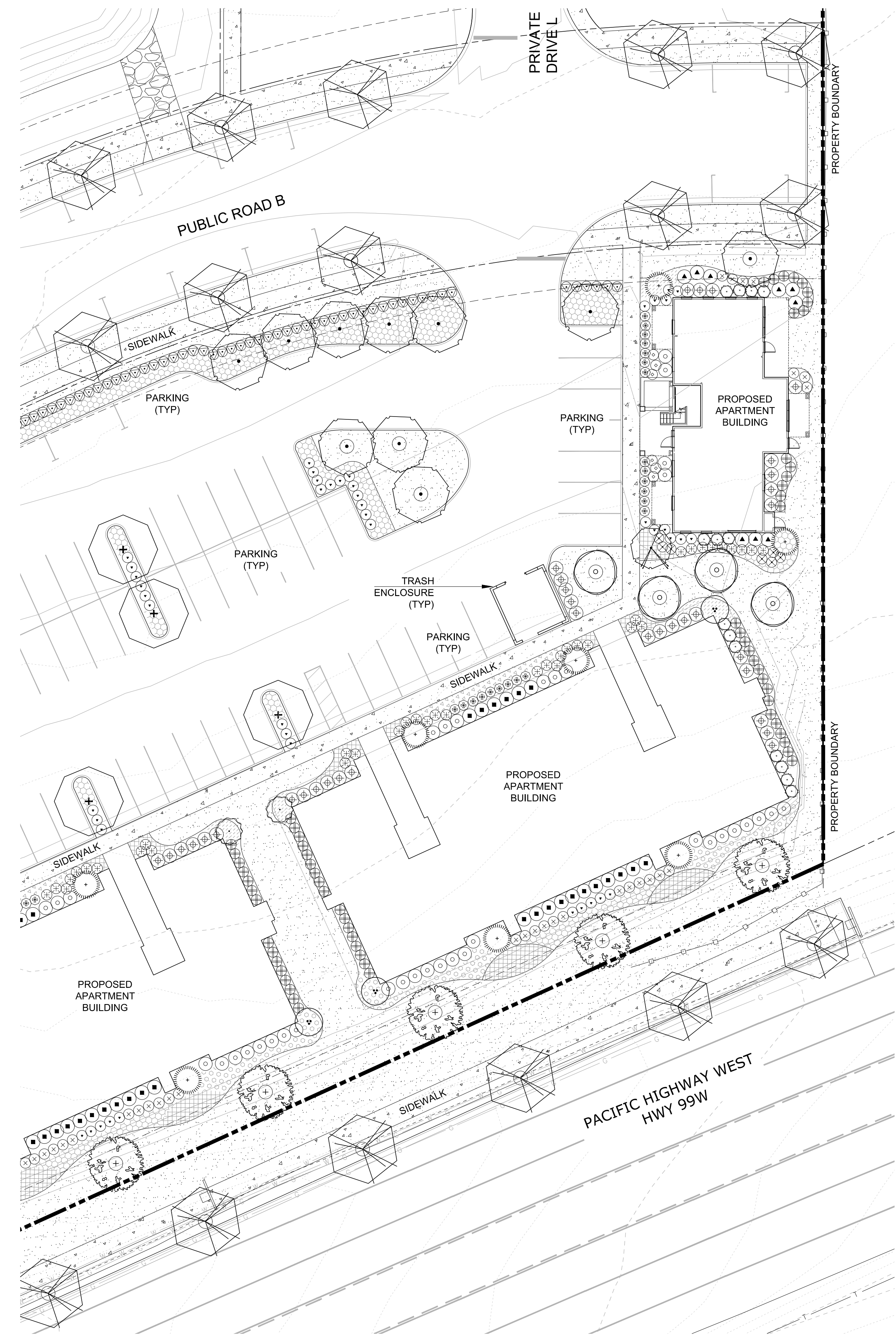
SYMBOL	STREET TREES ITEM	SIZE
	ACER RUBRUM 'FRANKSRED' RED SUNSET MAPLE	2" CAL.
	PLATANUS X ACERIFOLIA 'BLOODGOOD' BLOODGOOD LONDON PLANE TREE	2" CAL.
TREES		
ITEM		SIZE
	ZELKOVA SERRATA 'GREEN VASE' GREEN VASE ZELKOVA	2" CAL.
	TILIA CORDATA 'GREENSPIRE' GREENSPIRE LINDEN	2" CAL.
	BETULA JACQUEMONTII HIMALAYAN BIRCH	2" CAL.
	CERCIS CANADENSIS EASTERN REDBUD	1.5" CAL.
	PRUNUS SARGENTII SARGENT CHERRY	1.5" CAL.
	STYRAX JAPONICUS JAPANESE SNOWBELL	1.5" CAL.
	ACER CIRCINATUM VINE MAPLE	7-8" HT.
TREES-EVERGREEN		
ITEM		SIZE
	PINUS STROBUS 'FASTIGIATA' FASTIGIATE WHITE PINE	6' HT. / B&B
	CHAMAECYPARIS OBTUSA 'GRACILIS' SLENDER HINOKI FALSE CYPRESS	6' HT. / B&B
	THUJA PLICATA 'HOGAN' HOGAN'S WESTERN REDCEDAR	6' HT. / B&B
SHRUBS - DECIDUOUS		
ITEM		SIZE
	VIBURNUM P. TOMENTOSUM 'MARIESI' DOUBLEFILE VIBURNUM	7 GAL.
	HYDRANGEA QUERCIFOLIA 'SNOW QUEEN' SNOW QUEEN OAKLEAF HYDRANGEA	7 GAL.
	CORNUS STOLONIFERA 'FARROW' ARCTIC FIRE RED TWIG DOGWOOD	3 GAL.
	BERBERIS THUN. 'CHERRY BOMB' CHERRY BOMB BARBERRY	3 GAL.
	ROSA X 'RADRAZZ' KNOCK OUT SHRUB ROSE	3 GAL.
SHRUBS - EVERGREEN		
ITEM		SIZE
	PRUNUS LAUROCERASUS 'NANA' DWARF ENGLISH LAUREL	7 GAL.
	CHOISYA TERNATA MEXICAN ORANGE	7 GAL.
	ABELIA X GRANDIFLORA GLOSSY ABELIA	7 GAL.
	OSMANTHUS FRAGRANS SWEET OLIVE	7 GAL.
	SARCOCOCCA HOOKERIANA VAR. HUMILIS HIMALAYAN SWEET BOX	3 GAL.
	DAPHNE ODORA 'AURO-MARGINATA' VARIEGATED WINTER DAPHNE	3 GAL.
	NANDINA DOMESTICA 'COMPACTA' DWARF HEAVENLY BAMBOO	3 GAL.
	BUXUS SEMPERVIRENS 'SUFFRUTICOSA' EDGING BOXWOOD	3 GAL.
	VIBURNUM DAVIDII DAVID VIBURNUM	3 GAL.
	ESCALLONIA 'COMPACTA' COMPACT ESCALLONIA	3 GAL.
GRASSES & ACCENTS		
ITEM		SIZE
	LIRIOPE MUSCARI 'BIG BLUE' BIG BLUE LILYTURF	1 GAL.
	MISCANTHUS SINENSIS 'VARIEGATUS' VARIEGATED JAPANESE SILVER GRASS	3 GAL.
	MISCANTHUS SINENSIS 'LITTLE KITTEN' LITTLE KITTEN MAIDEN GRASS	3 GAL.
	CALAMAGROSTIS X ACUTIFLORA 'OVERDAM' OVERDAM FEATHER REED GRASS	3 GAL.
GROUNDCOVERS		
ITEM		SIZE
	COTONEASTER DAMMERI 'LOWFAST' BEARBERRY COTONEASTER	1 GAL. 3" O.C.
	RUBUS CALY. 'EMERALD CARPET' EMERALD CARPET CREEPING BERRY	1 GAL. 3" O.C.
	ANNUALS	4" FLATS 8" O.C.
	PT 769 ROUGH & READY ECO-TURF MIX BY PRO TIME LAWN SEED	SEED 5-7 LBS. / 1,000 SF



NOTE: SEE SHEET LS 1.2 FOR PLANT SCHEDULE

A WETLAND/ COMMON OPEN SPACE PATHWAY AND RESIDENTIAL COURTYARD ENLARGEMENT
SCALE 1"=20'-0"





A APARTMENT COMPLEX AND HWY 99 FRONTAGE ENLARGEMENT
 SCALE 1"=20'-0"

SCALE: 1"=20'-0"
 0 10 20 40

LANDSCAPE PLANT MATERIAL SCHEDULE

SYMBOL	STREET TREES ITEM	SIZE
	ACER RUBRUM 'FRANKSRED'	2" CAL.
	RED SUNSET MAPLE	2" CAL.
	PLATANUS X ACERIFOLIA 'BLOODGOOD'	2" CAL.
	BLOODGOOD LONDON PLANE TREE	2" CAL.
TREES		
ITEM	SIZE	
	ZELKOVA SERRATA 'GREEN VASE'	2" CAL.
	GREEN VASE ZELKOVA	2" CAL.
	TILIA CORDATA 'GREENSPIRE'	2" CAL.
	GREENSPIRE LINDEN	2" CAL.
	BETULA JACQUEMONTII	2" CAL.
	HIMALAYAN BIRCH	2" CAL.
	CERCIS CANADENSIS	1.5" CAL.
	EASTERN REDBUD	1.5" CAL.
	PRUNUS SARGENTII	1.5" CAL.
	SARGENT CHERRY	1.5" CAL.
	STYRAX JAPONICUS	1.5" CAL.
	JAPANESE SNOWBELL	1.5" CAL.
	ACER CIRCINATUM	7'-8" HT.
	VINE MAPLE	7'-8" HT.
TREES-EVERGREEN		
ITEM	SIZE	
	PINUS STROBUS 'FASTIGIATA'	6' HT. / B&B
	FASTIGIATA WHITE PINE	6' HT. / B&B
	CHAMAECYPARIS OBTUSA 'GRACILIS'	6' HT. / B&B
	SLENDER HINOKI FALSE CYPRESS	6' HT. / B&B
	THUJA PLICATA 'HOGAN'	6' HT. / B&B
	HOGAN'S WESTERN REDCEDAR	6' HT. / B&B
SHRUBS - DECIDUOUS		
ITEM	SIZE	
	VIBURNUM P. TOMENTOSUM 'MARIESII'	7 GAL.
	DOUBLEFILE VIBURNUM	7 GAL.
	HYDRANGAEA QUERCIFOLIA 'SNOW QUEEN'	7 GAL.
	SNOW QUEEN OAKLEAF HYDRANGAEA	7 GAL.
	CORNUS STOLONIFERA 'FARROW'	3 GAL.
	ARCTIC FIRE RED TWIG DOGWOOD	3 GAL.
	BERBERIS THUN. 'CHERRY BOMB'	3 GAL.
	CHERRY BOMB BARBERRY	3 GAL.
	ROSA X 'RADRAZZ'	3 GAL.
	KNOCK OUT SHRUB ROSE	3 GAL.
SHRUBS - EVERGREEN		
ITEM	SIZE	
	PRUNUS LAUROCERASUS 'NANA'	7 GAL.
	DWARF ENGLISH LAUREL	7 GAL.
	CHOISYA TERNATA	7 GAL.
	MEXICAN ORANGE	7 GAL.
	ABELIA X GRANDIFLORA	7 GAL.
	GLOSSY ABELIA	7 GAL.
	OSMANTHUS FRAGRANS	7 GAL.
	SWEET OLIVE	7 GAL.
	SARCOCOCCA HOOKERIANA VAR. HUMILIS	3 GAL.
	HIMALAYAN SWEET BOX	3 GAL.
	DAPHNE ODORA 'AUREO-MARGINATA'	3 GAL.
	VARIEGATED WINTER DAPHNE	3 GAL.
	NANDINA DOMESTICA 'COMPACTA'	3 GAL.
	DWARF HEAVENLY BAMBOO	3 GAL.
	BUXUS SEMPERVIRENS 'SUFFRUTICOSA'	3 GAL.
	EDGING BOXWOOD	3 GAL.
	VIBURNUM DAVIDII	3 GAL.
	DAVID VIBURNUM	3 GAL.
	ESCALLONIA 'COMPACTA'	3 GAL.
	COMPACT ESCALLONIA	3 GAL.
GRASSES & ACCENTS		
ITEM	SIZE	
	LIRIOPE MUSCARI 'BIG BLUE'	1 GAL.
	BIG BLUE LILYTURF	1 GAL.
	MISCANTHUS SINENSIS 'VARIEGATUS'	3 GAL.
	VARIEGATED JAPANESE SILVER GRASS	3 GAL.
	MISCANTHUS SINENSIS 'LITTLE KITTEN'	3 GAL.
	LITTLE KITTEN MAIDEN GRASS	3 GAL.
	CALAMAGROSTIS X ACUTIFLORA 'OVERDAM'	3 GAL.
	OVERDAM FEATHER REED GRASS	3 GAL.
GROUNDCOVERS		
ITEM	SIZE	
	COTONEASTER DAMMERI 'LOWFAST'	1 GAL.
	BEARBERRY COTONEASTER	3' O.C.
	RUBUS CALY. 'EMERALD CARPET'	1 GAL.
	EMERALD CARPET CREEPING BERRY	3' O.C.
	ANNUALS	4" FLATS 8" O.C.
	PT 769 ROUGH & READY ECO-TURF MIX	SEED
	BY PRO TIME LAWN SEED	5-7 LBS. / 1,000 SF