

REQUEST FOR COUNCIL ACTION

DATE ACTION REQUESTED: January 18, 2022

Order ____ Ordinance ____ Resolution ____ Motion ____ Information XX
No. No. No.

SUBJECT: Legislative Redistricting

**Staff: City Recorder Sue Ryan
Kim Sapunar, MWVCOG
Department: Administration**

Work Session X Business Session

Order on Agenda:

RECOMMENDATION:

Give feedback to staff and consultant on 3 map alternatives to rebalance the city's legislative districts.

EXECUTIVE SUMMARY:

Staff met with Council during a December 20, 2021 Work Session on the proposed 3 map alternatives for legislative redistricting. The maps went out for public comment. Tonight staff are asking the council to give direction on which map to prepare for adoption at the February 7, 2022 Business Session.

Alternative 1:

This alternative has minimal changes to the existing boundaries and addresses most of the comments from the Council.

- District 3 is expanded by moving the boundary north from 5th street to 3rd Street
- District 1 is expanded by moving the boundary east to Hulet Ave, and across 99 W on the west edge of the city, and across 99W south.
- District 5 is expanded by crossing Hwy 99 south, and a few blocks west into District 2

Alternative 2:

This alternative has small changes to the existing boundaries, with the largest geography change between Districts 4 and 5. Districts 2 and 3 remain close to unchanged. Most of the comments from the Council have been addressed.

- District 3 is expanded by moving the boundary north from 5th to 4th street
- District 1 is expanded by moving the boundary east to Elliot Rd
- District 4 is smaller, (one very large census block)
- District 5 is expanded by crossing Hwy 99.

Alternative 3:

This alternative tries to keep the dividing line along Hwy 99 between District 5 and 6 and matches the population between districts very closely. Most of the comments from the Council have been addressed.

- District 1 is expanded north and south.
- District 3 takes up part of the extension south down Corrine Dr.
- District 2 expands north into District 4

FISCAL IMPACT: \$10,000 has been allotted for this item in the FY 2021-22 City Recorder budget to pay for technical consultant and community outreach.

STRATEGIC ASSESSMENT: (Relate to Council Goals if applicable)

2020 Council Goals:

2. Further develop an operational culture that adopts and cherishes Diversity, Equity, and Inclusion as core values. Community outreach for legislative redistricting should be inclusive of Diversity and Equity.

Attachment 1: Alternative Maps

City of Newberg Alternative 1

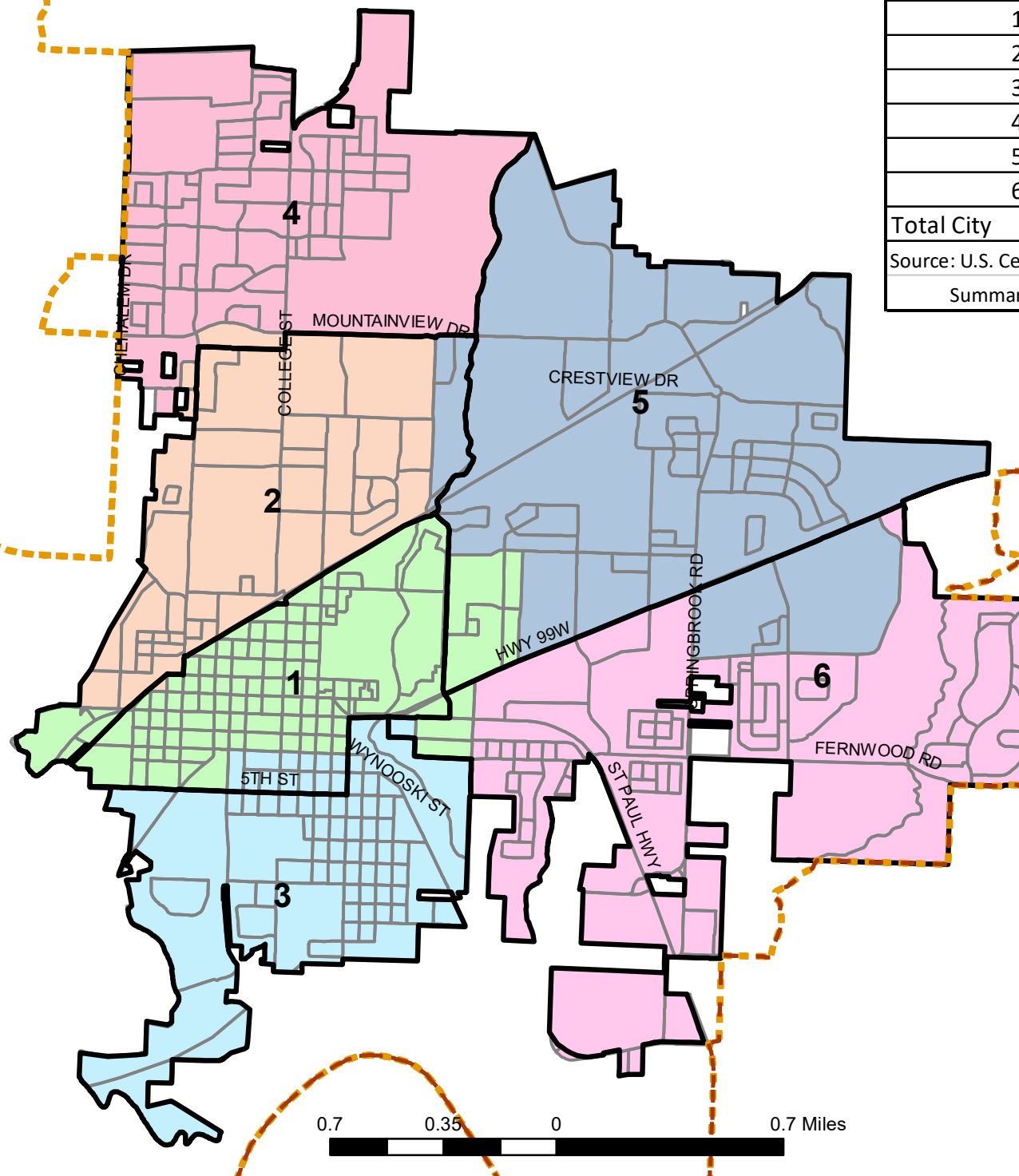
Newberg Council Districts Alternative 1

And Deviation from Target Population (4,190)

District	Population	Deviation	% Deviation
1	4130	-60	-1.43
2	4171	-19	-0.45
3	4169	-21	-0.5
4	4327	137	3.27
5	4229	39	0.93
6	4112	-78	-1.86
Total City	25,138		

Source: U.S. Census Bureau, 2020 P.L. 94-171 Redistricting File

Summary of Total Population



- Senate Boundaries 2021
- House Boundaries 2021
- Current Council Districts



City of Newberg Alternative 2

Newberg Council Districts Alternative 2

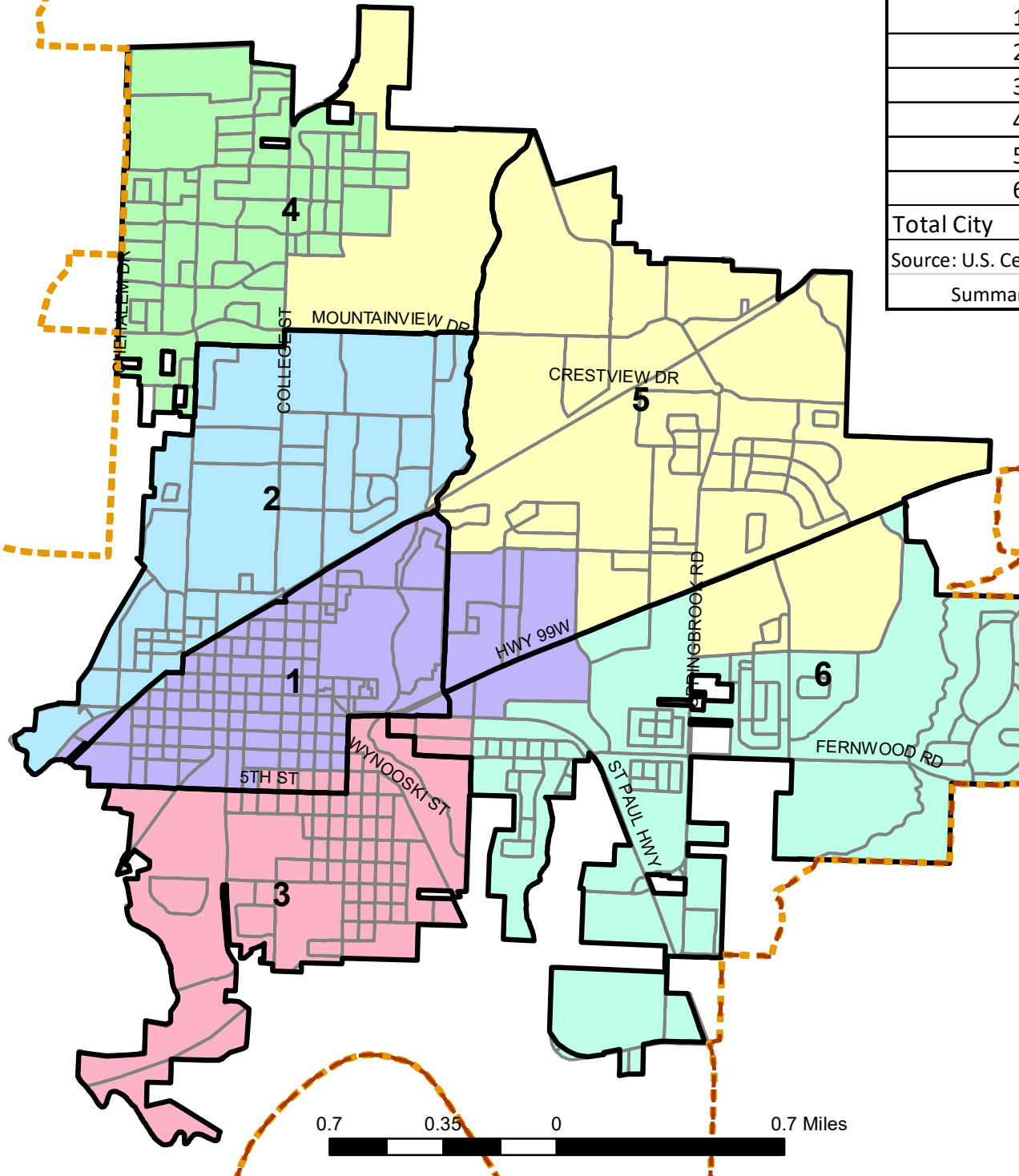
And Deviation from Target Population (4,190)

District	Population	Deviation	% Deviation
1	4276	86	2.05
2	4362	172	4.11
3	4204	14	0.33
4	4118	-72	-1.72
5	4077	-113	-2.7
6	4101	-89	-2.12
Total City	25,138		

Source: U.S. Census Bureau, 2020 P.L. 94-171 Redistricting File

Summary of Total Population

- Senate Boundaries 2021
- House Boundaries 2021
- Current Council Districts



City of Newberg Alternative 3




Newberg Council Districts Alternative 3

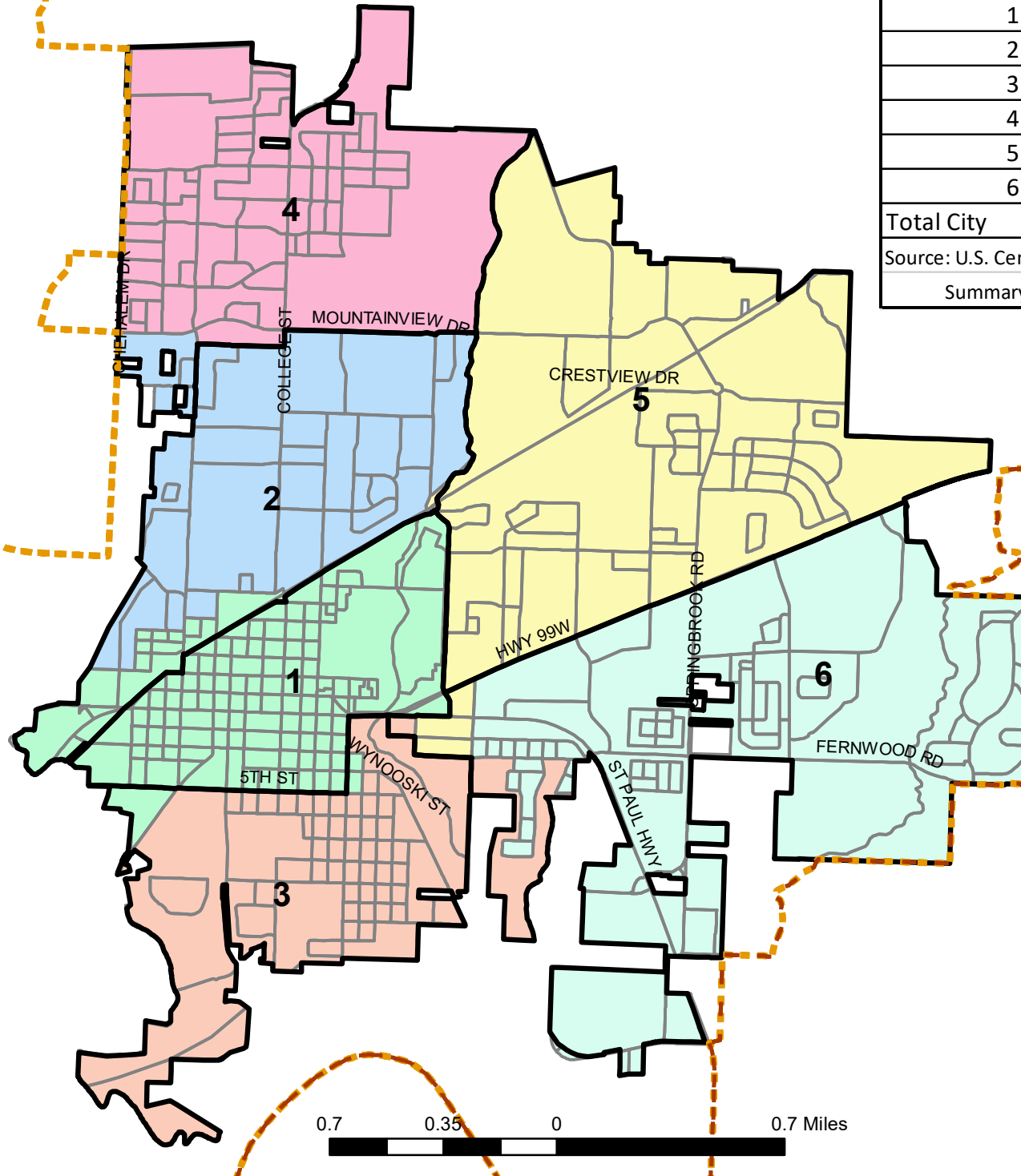
And Deviation from Target Population (4,190)

District	Population	Deviation	% Deviation
1	4204	14	0.33
2	4213	23	0.55
3	4241	51	1.22
4	4118	-72	-1.72
5	4106	-84	-2
6	4256	66	1.58
Total City	25,138		

Source: U.S. Census Bureau, 2020 P.L. 94-171 Redistricting File

Summary of Total Population

-  Senate Boundaries 2021
-  House Boundaries 2021
-  Current Council Districts



City of Newberg Census Block Population Numbers 2020

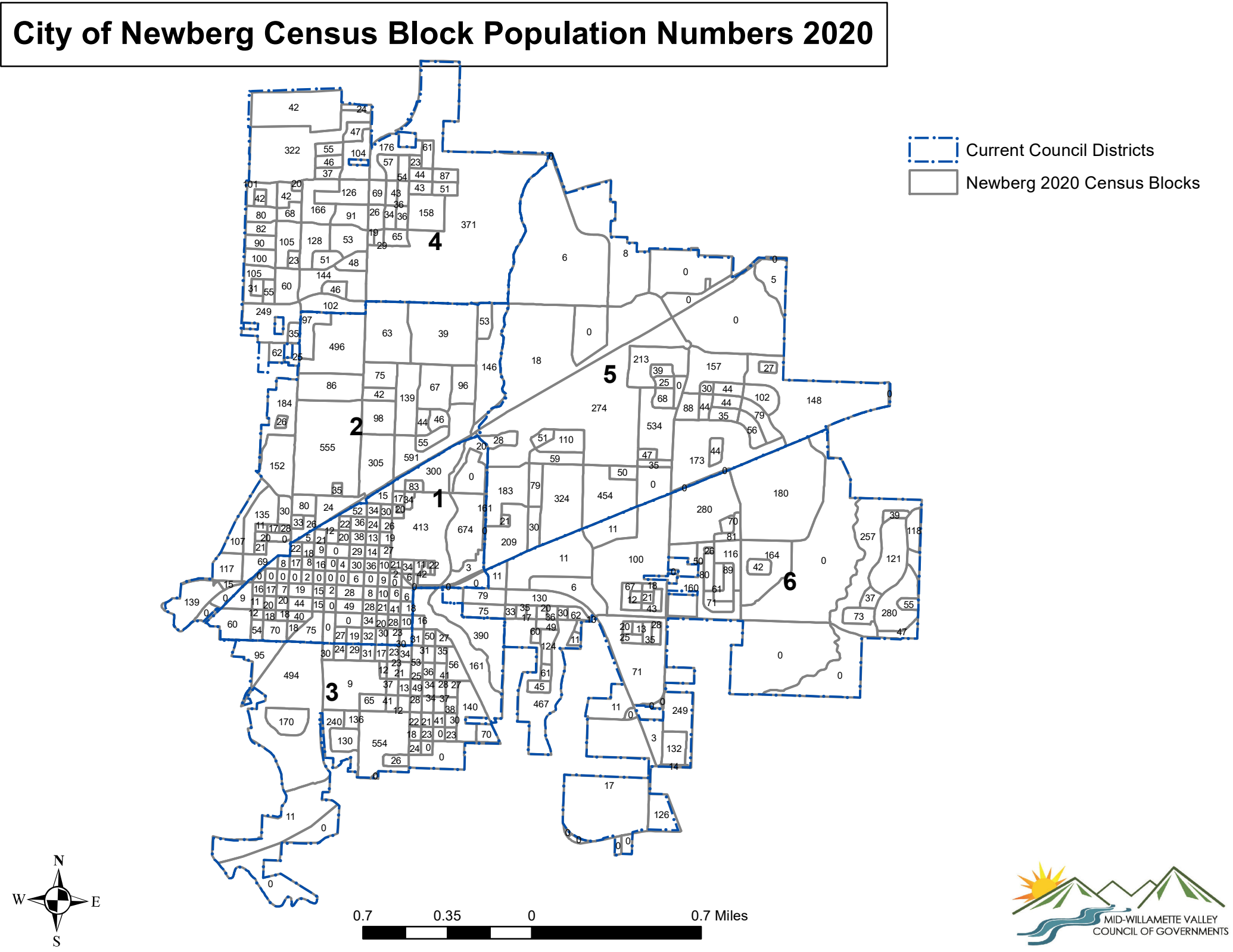
City of Newberg Census Block Population Numbers 2020

Legend:

- Current Council Districts
- Newberg 2020 Census Blocks

Scale: 0.7 0.35 0 0.7 Miles

Mid-Willamette Valley Council of Governments



City of Newberg Census Block Population Numbers 2020

City of Newberg Census Block Population Numbers 2020

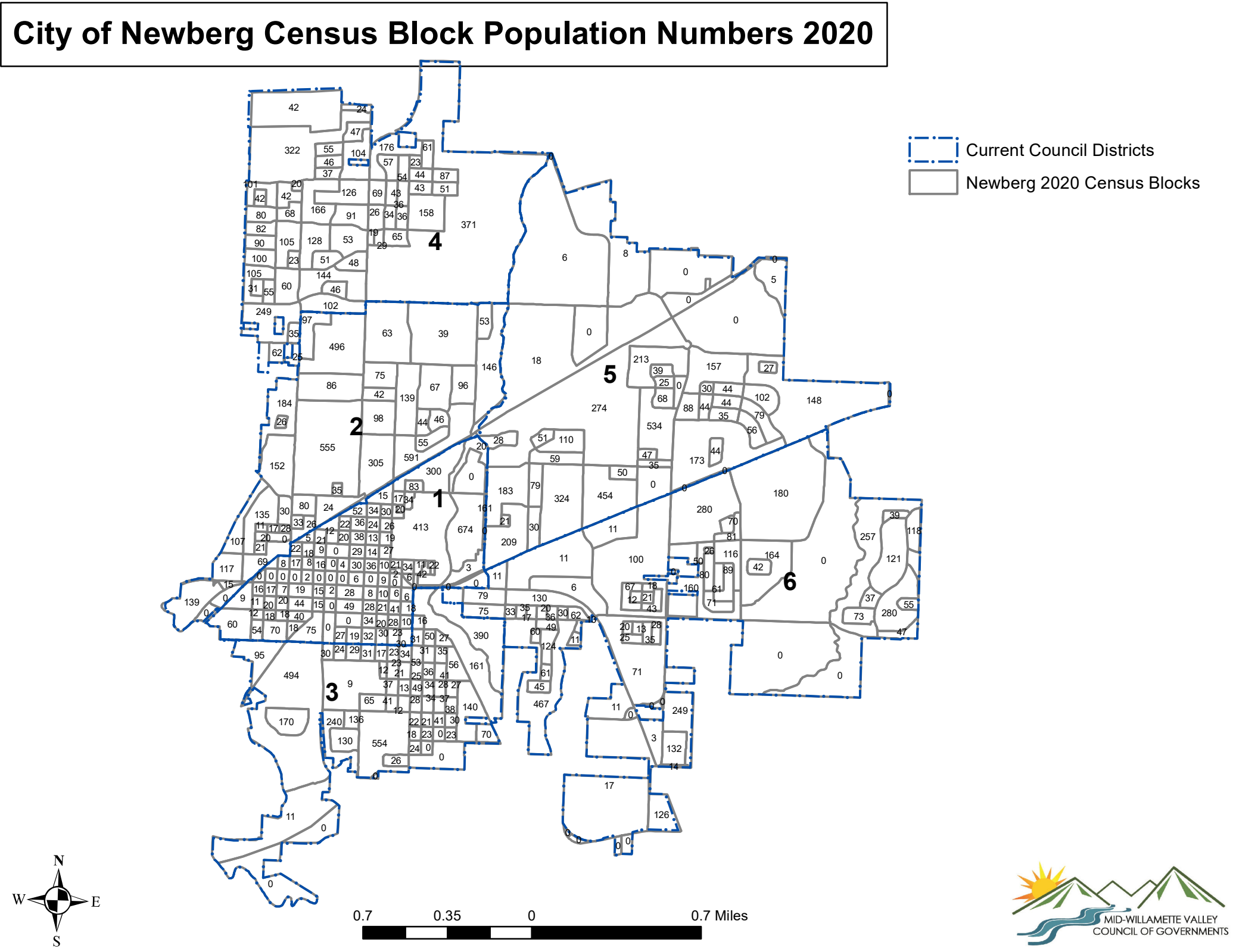
Legend:

- Current Council Districts
- Newberg 2020 Census Blocks

Scale: 0.7 0.35 0 0.7 Miles

North Arrow

MID-WILLAMETTE VALLEY COUNCIL OF GOVERNMENTS



City of Newberg Census Block Population Numbers 2020

City of Newberg Census Block Population Numbers 2020

Legend:

- Current Council Districts
- Newberg 2020 Census Blocks

Scale: 0.7 0.35 0 0.7 Miles

Mid-Willamette Valley Council of Governments

