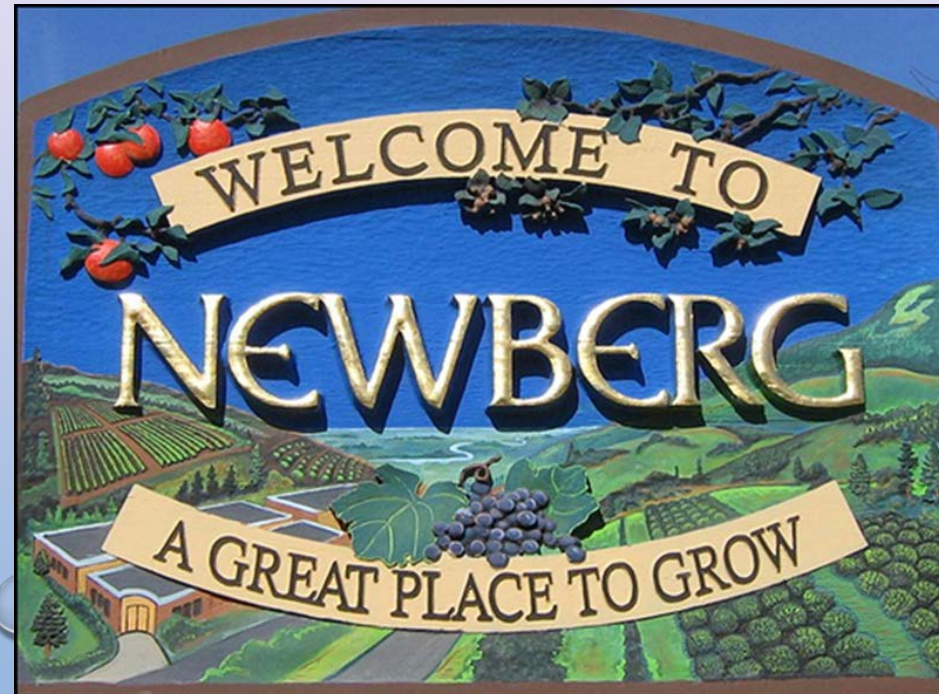


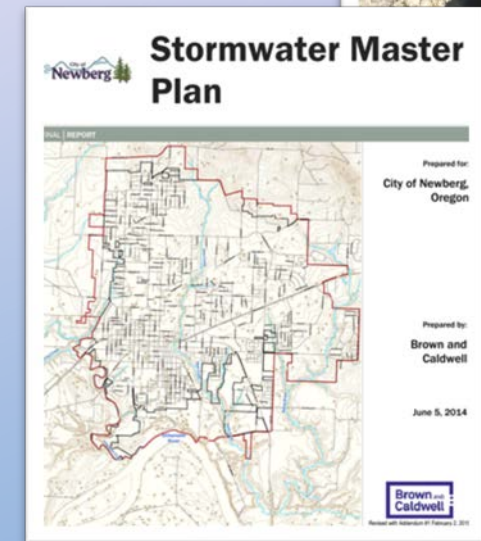
# **CITIZENS RATE REVIEW COMMITTEE 5 YEAR STORMWATER C.I.P. PRESENTATION**



OCTOBER 22, 2015

# STATUS UPDATE ON PROJECTS

- STORMWATER MASTER PLAN UPDATE
- SHERIDAN ST STORM DRAINAGE UPGRADES
- 99W TO SECOND ST PARKING LOT PIPE
- 2014 SDC RATE CONSULTANT STUDY
- S BLAINE ST STORM PIPE, 2<sup>ND</sup> TO 11<sup>TH</sup> ST
- S CENTER ST STORM PIPE, 8<sup>TH</sup> TO 9<sup>TH</sup> ST





# PROPOSED 5 YEAR STORMWATER PROJECTS

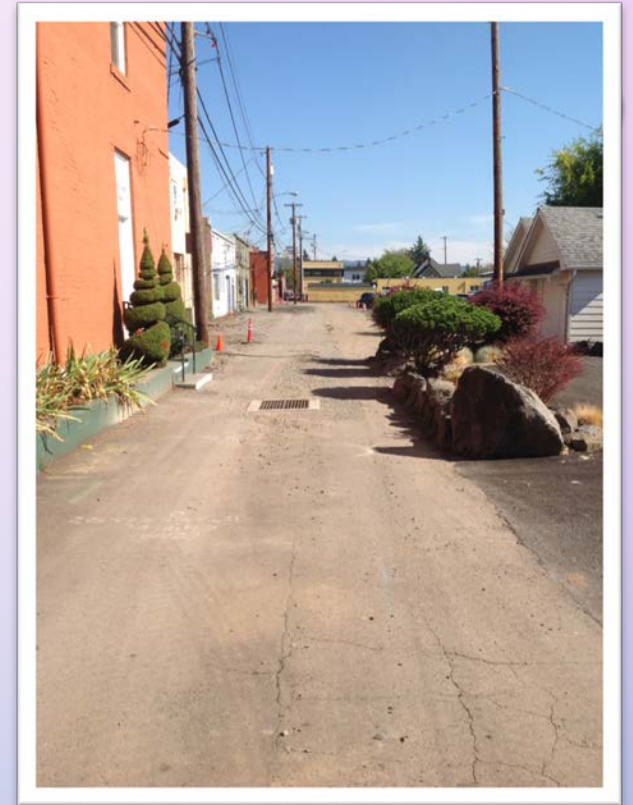
- S. BLAINE STREET; HANCOCK – 11<sup>TH</sup> STREET
- VILLA ROAD AT HESS CREEK
- S. CENTER STREET
- COLUMBIA DRIVE
- N. ELLIOT
- N. SPRINGBROOK
- TMDL/WQ RETROFIT
- SW DESIGN MANUAL UPDATE



Villa Road Culvert

# S. BLAINE STREET: HANCOCK TO 11<sup>TH</sup> STREET

- Sections of pipe crosses under the Fire Station and several homes
- Flooding occurs in the 10-year storm event in 6<sup>th</sup> Street and Blaine Street
- Large sections of pipe are nearing end of life



Alley at 2<sup>nd</sup> Street Parking Lot



# VILLA ROAD @ HESS CREEK

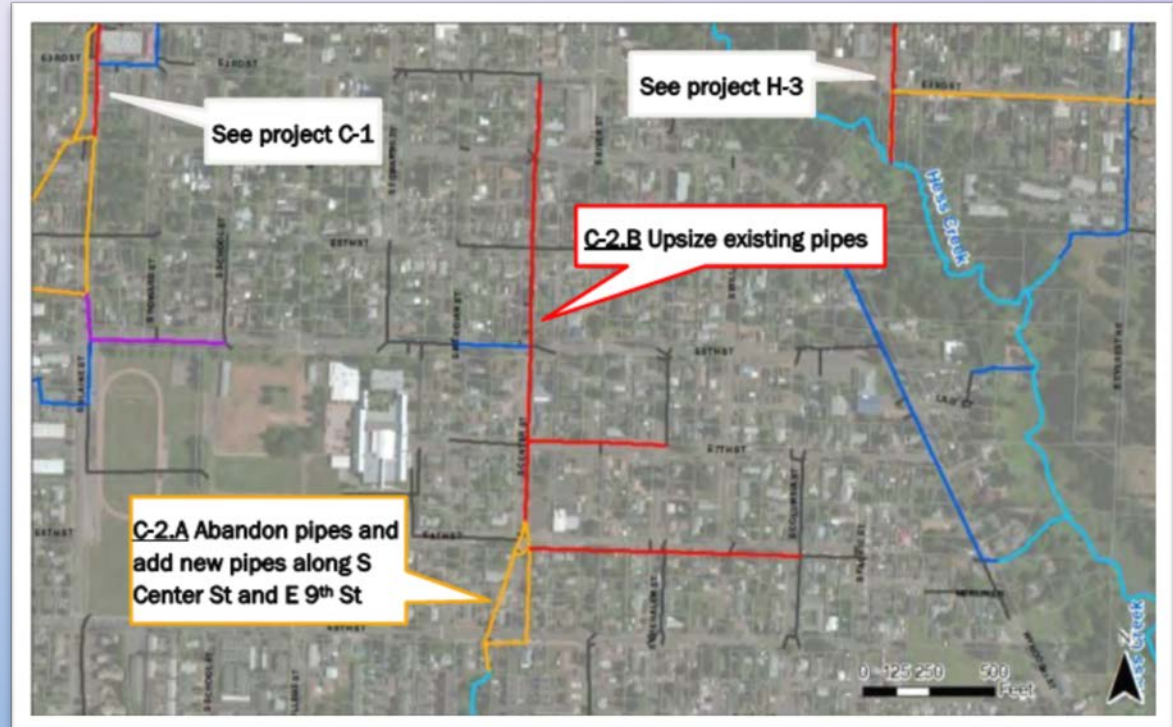
- The existing culverts flood during large storm events
- Villa Road is also under going improvements to add sidewalks and bike lanes
- The culverts will be upsized and will provide for fish passage





# S. CENTER STREET

- Sections of the existing 21" pipe crosses under multiple structures
- 7<sup>th</sup>, 8<sup>th</sup> and Center Streets flood in the 10 year storm event



# TMDL IMPLEMENTATION & WATER QUALITY IMPROVEMENTS



s Creek (DS of Mountainview Drive)  
Residential Stormwater Outfall



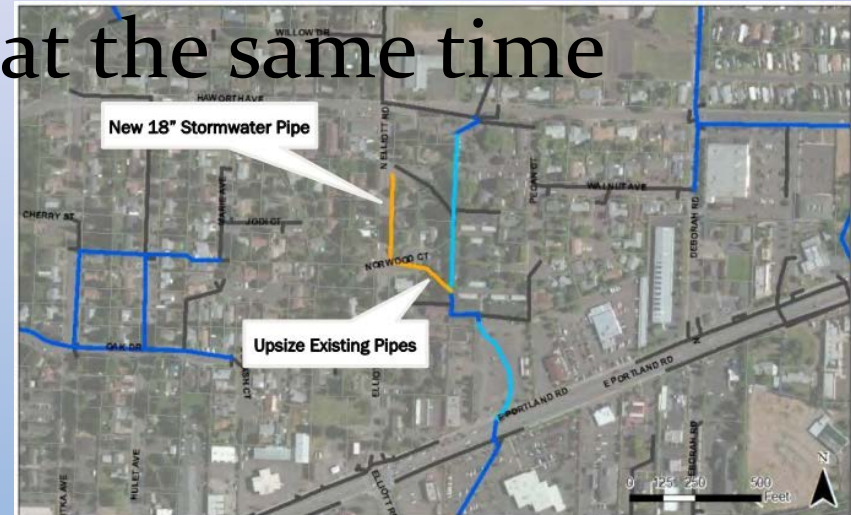
West Bank Chehalem Creek  
Streambank Erosion

- The city currently has an Implementation Plan that we report annually our progress
- Mostly reactive program – need to move to a more proactive program
- GIS Mapping efforts
- Storm facility inspection, enforcement & retrofit



# N. ELLIOT ROAD

- There is no public drainage system in N. Elliot Road resulting in frequent ponding other than ditches
- The ditches are a safety issues for pedestrians heading to and from the High School
- This project would add 18" storm pipe to convey storm drainage
- Roadway improvements will occur at the same time

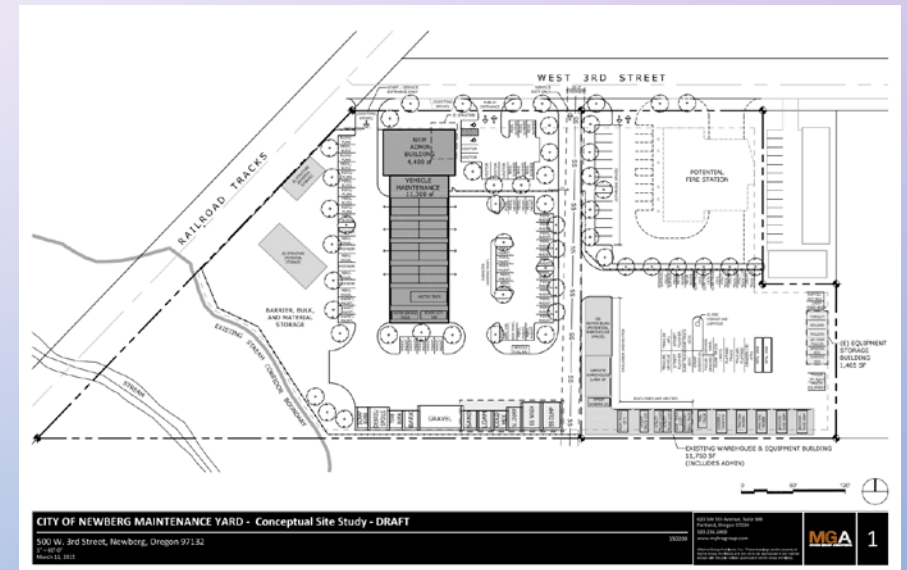




# MULTI-FUND PROJECTS

Cartegraph

- Survey Equipment
- Permitting Software
- Cartegraph Software Upgrade
- Maintenance Facility



**SUNGARD**  
PUBLIC SECTOR